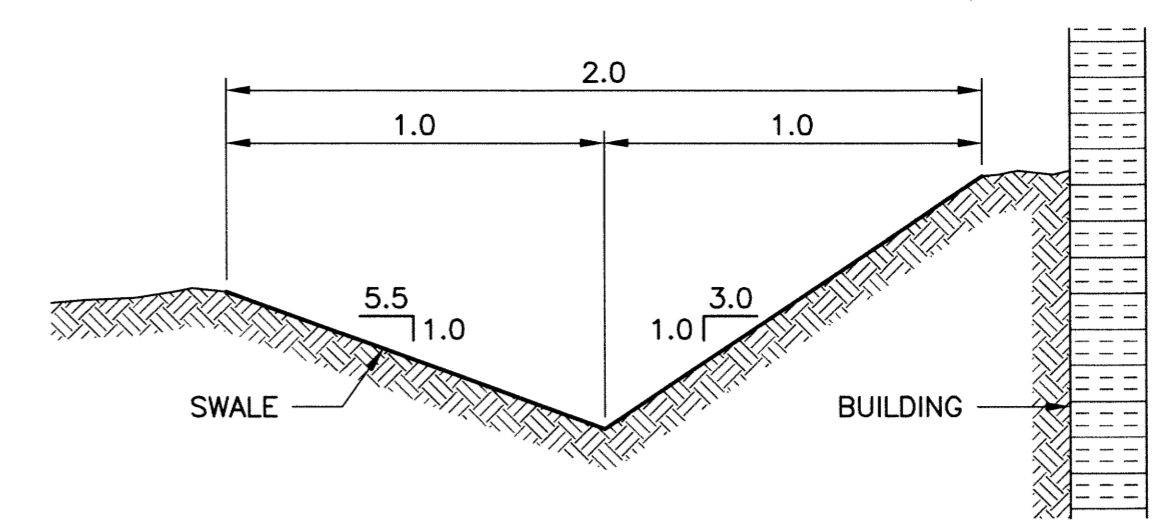
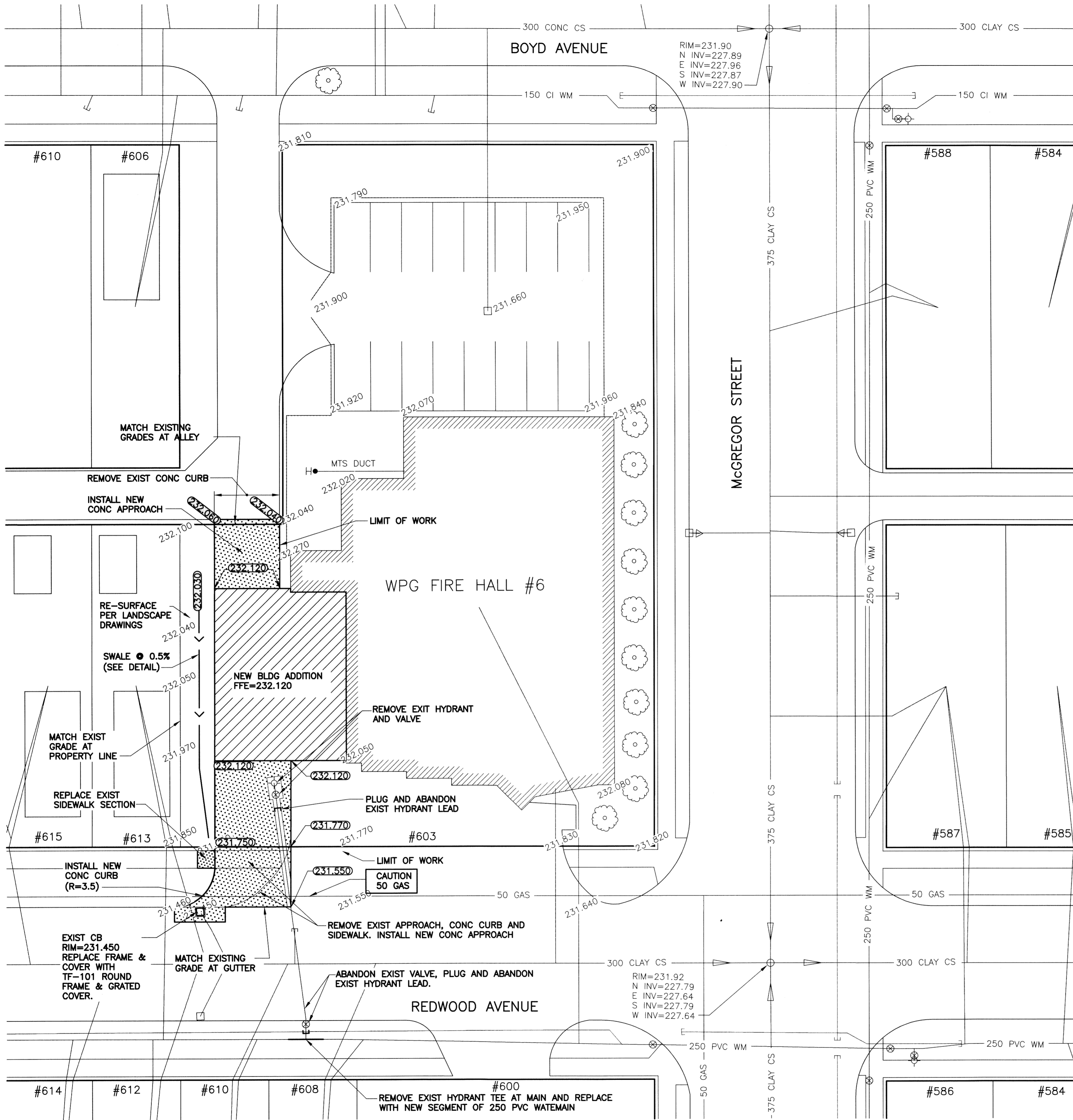
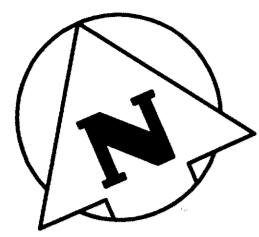


201317102V0.dwg FILE NAME: DATE: 2014.11.24 PROJECT No: 2013-171-02 SHEET TITLE: MUNICIPAL IMPROVEMENTS PLAN ADDRESS: 603 REDWOOD AVENUE



TYPICAL SWALE CROSS SECTION DETAIL
SCALE: 1:20 HOR
SCALE: 1:10 VER

STORM SEWER DRAINAGE CRITERIA:
 RUNOFF COEFFICIENT "C" (SUPPLIED BY CITY OF WINNIPEG) = 0.60
 TIME OF CONCENTRATION = 10 MINUTES

- TOTAL AREA OF TRUCK BAY ADDITION = 0.41 ACRES.
- ALLOWABLE 5 YEAR RUNOFF RATE; 0.11 CFS.
- BUILDING ROOF STORAGE = 2.0m³.
- BUILDING ROOF RUNOFF RESTRICTED TO 0.11 CFS.
- RUNOFF RESTRICTED TO ALLOWABLE 5-YEAR RUNOFF RATE VIA FLOW RESTRICTOR IN ROOF DRAINS WHICH SPLASH TO GRADE ON WEST SIDE OF BLDG.

- NOTES:
- ALL WORK SHALL BE PERFORMED IN ACCORDANCE WITH THE LATEST VERSION OF THE CITY OF WINNIPEG STANDARD CONSTRUCTION SPECIFICATIONS.
 - CONTRACTOR SHALL BE RESPONSIBLE FOR ACQUIRING ALL REQUIRED PERMITS (I.E. CUT PERMITS, APPROACH PERMITS, ETC.)
 - APPROACHES SHALL BE 200mm THICK REINFORCED CONCRETE PAVEMENT PER CITY OF WINNIPEG APPROACH STANDARDS.

PROPERTY LIMITS DELINEATION
 DELINEATION OF PROPERTY LIMITS AS SHOWN ON THIS DWG DOES NOT REPRESENT A "LEGAL SURVEY". KGS GROUP MAKES NO REPRESENTATION OR WARRANTY AS TO THE ACCURACY OF PROPERTY LIMITS DELINEATED ON THIS DWG, NOR ON THE DIMENSIONAL ACCURACY OF DWG FEATURES RELATIVE TO THOSE PROPERTY LIMITS.

WARNING

- NOTIFY THE GAS COMPANY OF THE PROPOSED LOCATION OF EXCAVATION.
- TAKE PRECAUTION TO AVOID DAMAGE TO GAS COMPANY INSTALLATIONS.
- SEE PROVINCIAL REGULATION 210/72 FOR DETAILS.

METRIC
 WHOLE NUMBERS INDICATE MILLIMETRES
 DECIMALIZED NUMBERS INDICATE METRES

0	ISSUED FOR CONSTRUCTION	BJM	APR 30 2015
No.	REVISION/DESCRIPTION	BY	DATE



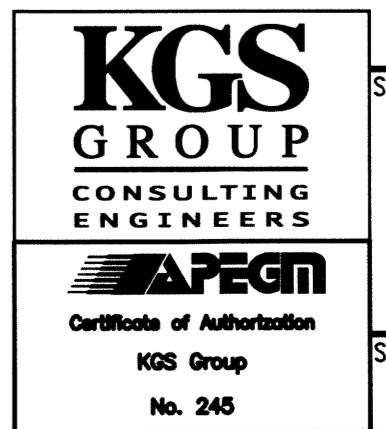
DRAWN	DMW	CHECKED	DESIGNED	APPROVED
DATE	2014.11.05	USER	APPROVAL	

THE CITY OF WINNIPEG
 PLANNING, PROPERTY AND DEVELOPMENT DEPARTMENT
 MUNICIPAL ACCOMMODATIONS DIVISION
 3-65 GARRY STREET, R3C 4K4

PROJECT
 WINNIPEG FIRE PARAMEDIC SERVICES
 ADDITIONAL APPARATUS ROOM BAYS

603 REDWOOD AVENUE
 SHEET TITLE
 MUNICIPAL IMPROVEMENTS
 PLAN

KGS PROJECT NUMBER
 14-0107-032



SCALE	PROJECT No:	SHEET No:
AS SHOWN	2013-0171-02	C1

DRAWING SHEET SIZE: A1 (841mm x 594mm) PLOT 1:1

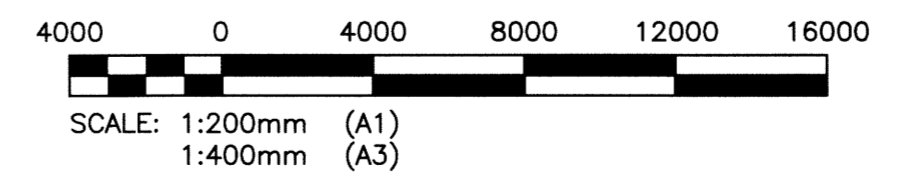
300 LBS	LAND DRAINAGE SEWER	300 LBS		TEST HOLE			
250 WWS	WASTE WATER SEWER	250 WWS		GUY WIRE			
	GAS			LIGHT STANDARD			
	HYDRO			BACK OF CURB			
	M.T.S.			CONCRETE			
150 WM	WATERMAIN	150 WM		ASPHALT			
	HYDRANT			SIDEWALK			
	VALVE			PROPERTY LINE			
	MANHOLE			SURVEY BAR			
	CATCH BASIN			GEODETIC BENCHMARK			
	CURB INLET			ELEVATION			
	POLES						
EXISTING	LEGEND-PLAN	PROPOSED	EXISTING	LEGEND-PLAN	PROPOSED	EXISTING	LEGEND-PROFILE

B.M. KGS BASE ELEV. 249.214
 BASED UPON GRID, UTM ZONE 14, NAD 83 CSRS, (CGVD 28)

LOCATION APPROVED UNDERGROUND STRUCTURES

SUPV. U/G STRUCTURES COMMITTEE DATE

NOTE:
 LOCATION OF UNDERGROUND STRUCTURES AS SHOWN ARE BASED ON THE BEST INFORMATION AVAILABLE BUT NO GUARANTEE IS GIVEN THAT ALL EXISTING UTILITIES ARE SHOWN OR THAT THE GIVEN LOCATIONS ARE EXACT. CONFIRMATION OF EXISTENCE AND EXACT LOCATION OF ALL SERVICES MUST BE OBTAINED FROM THE INDIVIDUAL UTILITIES BEFORE PROCEEDING WITH CONSTRUCTION.



PRELIMINARY
 NOT TO BE USED FOR CONSTRUCTION