

**WATER SERVICE INFORMATION**

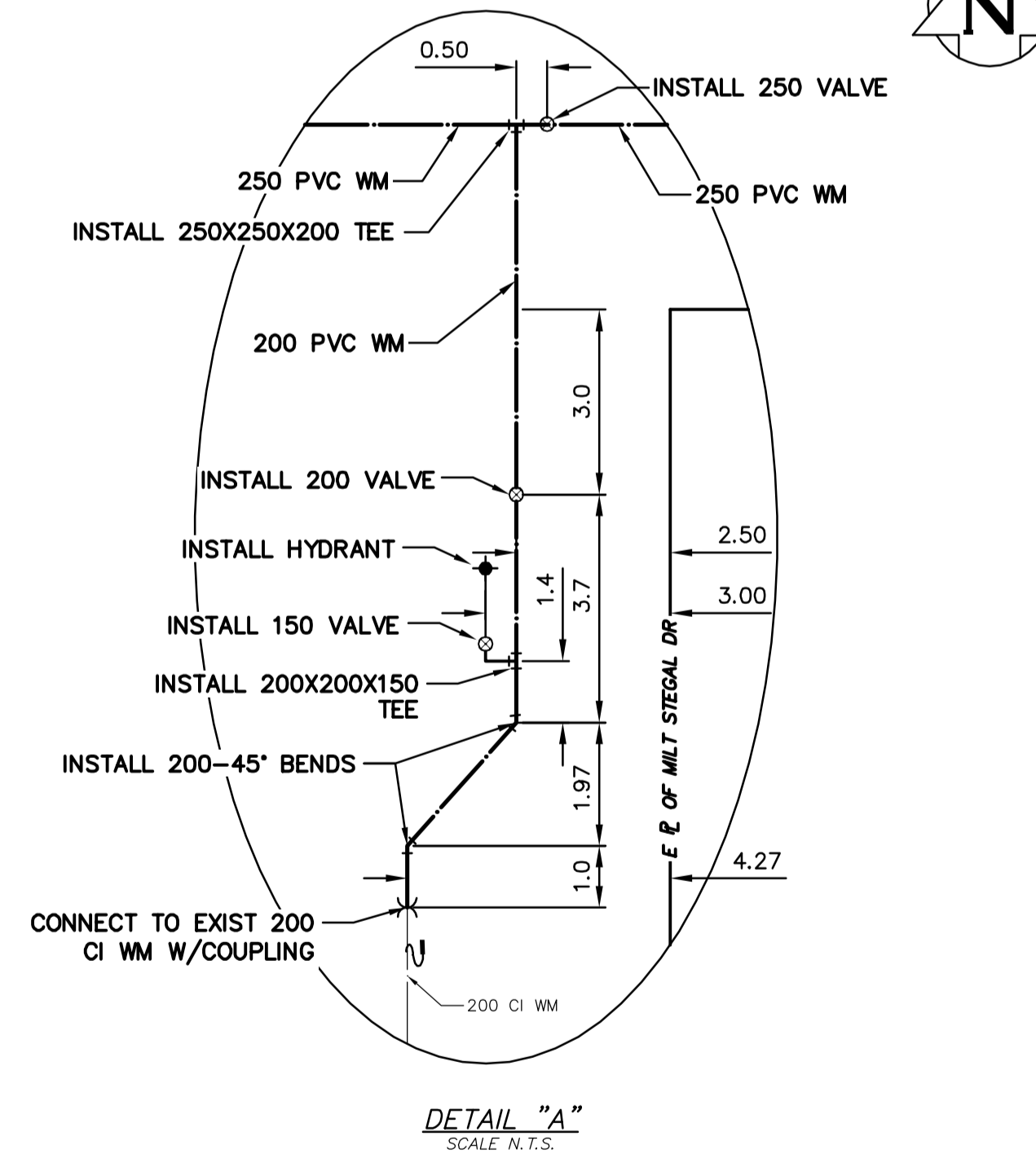
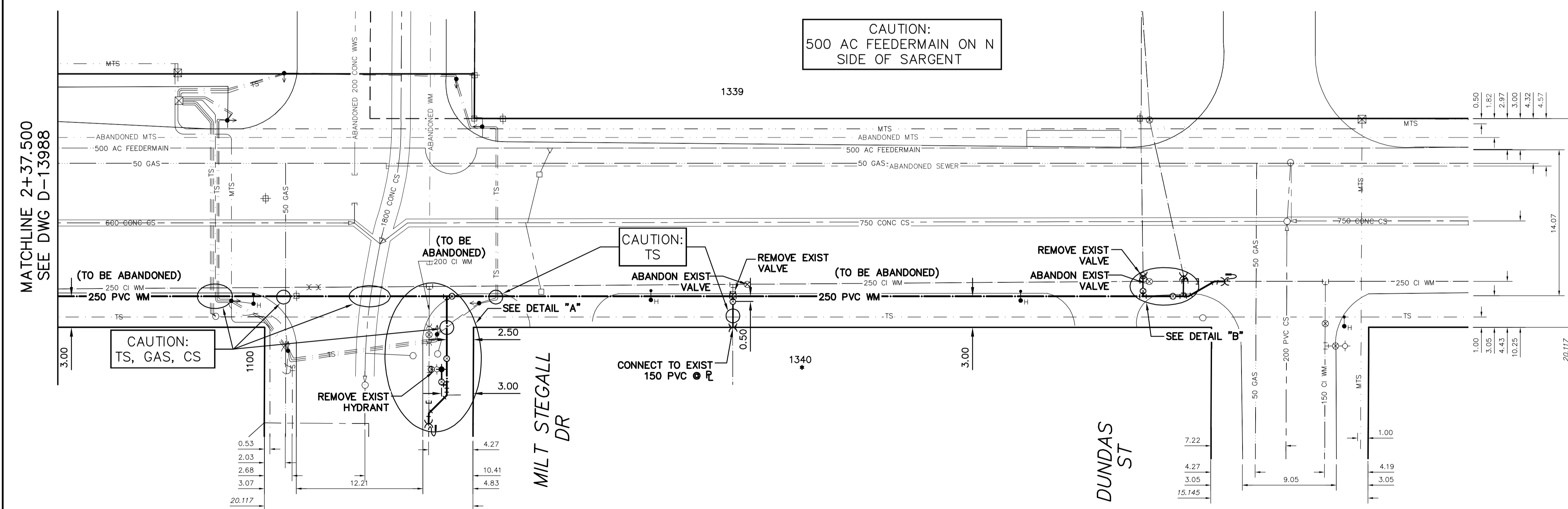
ADDRESS	SIZE (mm) MATERIAL (STREET)	SIZE (mm) MATERIAL (PROP.)	SHORT & LONG MEASUREMENT	CORP. LOCATION	REMARKS
1400 SARGENT AVE COMMERCIAL	150 PVC	150 PVC	11.35 SNL BLDG 18.080 SSL SARGENT AVE	OPP OF S/C	SERVICED OFF ST JAMES ST
1395 SARGENT AVE COMMERCIAL	150 PVC	150 PVC	13.86 NSL BLDG 17.541>NNL SARGENT AVE	OPP OF S/C	SERVICED OFF ST JAMES ST
1380 SARGENT AVE COMMERCIAL	150 PVC	150 AC	4.40 EEL BLDG 59.388 WML MILT STEGALL DR	OPP OF S/C	RENEW TO P. W/150 PVC
1370 SARGENT AVE COMMERCIAL	-	-	-	-	-
1340 SARGENT AVE COMMERCIAL	150 CI	150 PVC	19.23 EWL BLDG 25.004 EWL MILT STEGALL DR	OPP OF S/C	RENEW TO P. W/50 CU
1339 SARGENT AVE SPRINKLER	250 PVC	250 PVC	51.63 EWL BLDG 6.600 WML MILT STEGALL DR	OPP OF S/C	RECONNECT SERVICE W/250 PVC
1339 SARGENT AVE COMMERCIAL	150 PVC	150 PVC	53.97 EWL BLDG 2.591 WML MILT STEGALL DR	3.3 E OF S/C	RECONNECT SERVICE W/150 PVC
1100 MILT STEGALL DR COMMERCIAL	50 CU	50 CU	9.20 WEL BLDG 22.350 WML MILT STEGALL DR	OPP OF S/C	RECONNECT SERVICE

\* SERVICES TO BE RENEWED TO P. ALL OTHERS TO BE RECONNECTED

NOTE: CHAINAGES SHOWN ARE ALONG S. P. OF SARGENT AVENUE

SARGENT AVENUE

CAUTION: 500 AC FEEDERMAIN ON N SIDE OF SARGENT



NOTE: ALL VALVES TO BE INSTALLED COUNTERCLOCKWISE TO CLOSE

METRIC  
WHOLE NUMBERS INDICATE MILLIMETRES  
DECIMALIZED NUMBERS INDICATE METRES



<p><b>WARNING</b></p> <p>IF POWER EQUIPMENT OR EXPLOSIVES ARE TO BE USED FOR EXCAVATION ON THIS PROJECT THE CONTRACTOR MUST:</p> <ol style="list-style-type: none"> <li>1) NOTIFY THE GAS COMPANY OF THE PROPOSED LOCATION OF EXCAVATION.</li> <li>2) TAKE PRECAUTION TO AVOID DAMAGE TO GAS COMPANY INSTALLATIONS.</li> </ol> <p>SEE PROVINCIAL REGULATION 210/72 FOR DETAILS</p>	<p>LOCATION APPROVED UNDERGROUND STRUCTURES</p> <p>SUPV. U/G STRUCTURES COMMITTEE DATE</p> <p>NOTE: LOCATION OF UNDERGROUND STRUCTURES AS SHOWN ARE BASED ON THE BEST INFORMATION AVAILABLE BUT NO GUARANTEE IS GIVEN THAT ALL EXISTING UTILITIES ARE SHOWN OR THAT THE GIVEN LOCATIONS ARE EXACT. CONFIRMATION OF EXISTENCE AND EXACT LOCATION OF ALL SERVICES MUST BE OBTAINED FROM THE INDIVIDUAL UTILITIES BEFORE PROCEEDING WITH CONSTRUCTION.</p>	<p>B.M. ELEV.</p> <p>CONSTRUCTION COMPLETION DATE: YYYY MM DD</p>	<p>ENGINEER'S SEAL</p> <p>ORIGINAL SIGNED BY S.R.J. COURNOYER 15/05/01</p>	
			<p>DESIGNED BY TS</p> <p>DRAWN BY RS</p> <p>SCALE: HORIZONTAL 1:250 VERTICAL 1:50</p> <p>DATE 2015 05 04</p> <p>PLOT DATE: 2015 05 04</p>	<p>CHECKED BY SC</p> <p>APPROVED BY KZ</p> <p>RELEASED FOR CONSTRUCTION</p> <p>DATE</p>

**THE CITY OF WINNIPEG**  
Winnipeg  
WATER AND WASTE DEPARTMENT  
ENGINEERING DIVISION

2015 WATER RENEWALS

SARGENT AVENUE  
20 W OF MILT STEGALL DRIVE TO DUNDAS STREET

SHEET 8 OF 12  
CITY DRAWING NUMBER  
D-13988

BID OPPORTUNITY: 358-2015  
CONTRACT NUMBER: 7  
FILE PATH: R:\DRAWINGS\WATER\RENEWAL\2015\_RENEWAL\CONTRACT 7\  
FILE NAME: SARGENT.dwg