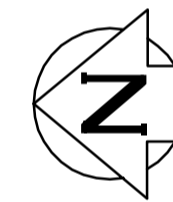
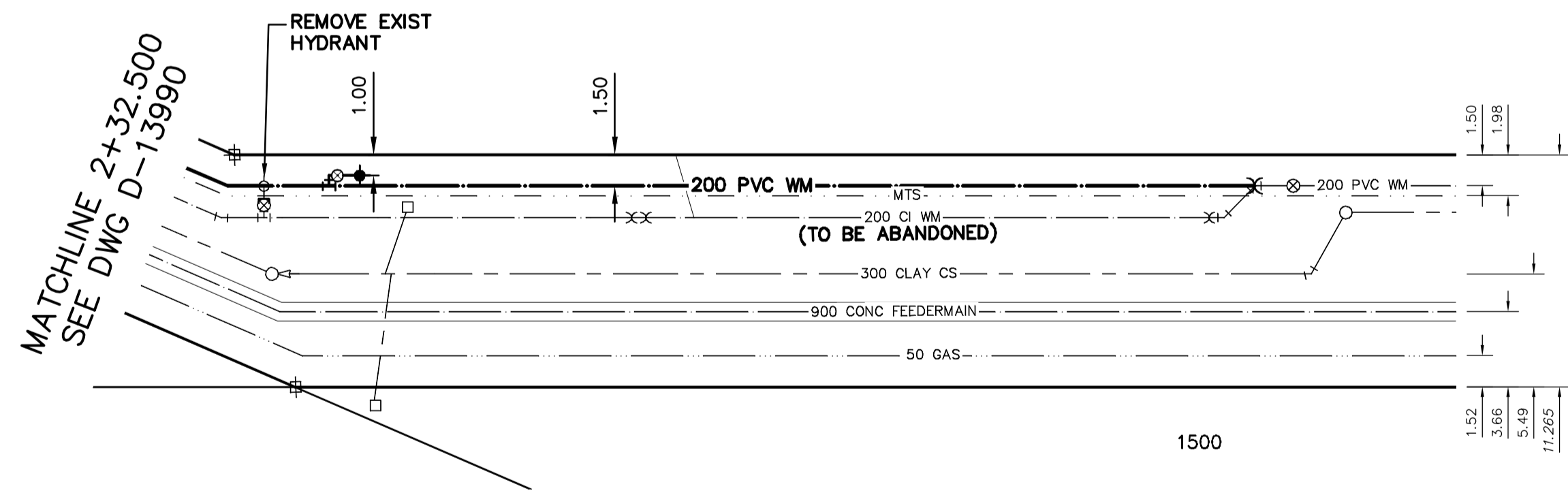


NOTE: CHAINAGES SHOWN ARE ALONG
E. R. OF VALOUR RD

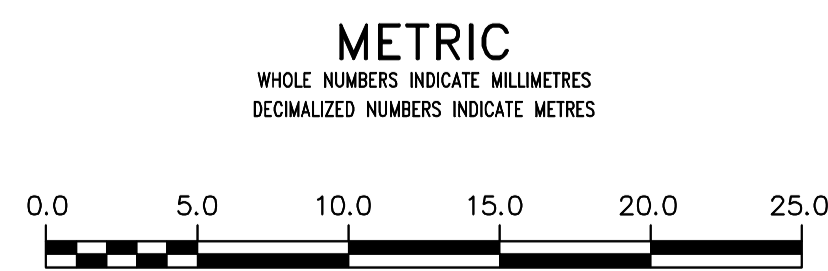


VALOUR ROAD



CAUTION:
900 CONC FEEDERMAIN

FOR INDEX SEE D-13981 NOTE: ALL VALVES TO BE INSTALLED
COUNTER-CLOCKWISE TO CLOSE



WARNING
IF POWER EQUIPMENT OR EXPLOSIVES
ARE TO BE USED FOR EXCAVATION ON
THIS PROJECT THE CONTRACTOR MUST:
1) NOTIFY THE GAS COMPANY OF THE
PROPOSED LOCATION OF EXCAVATION.
2) TAKE PRECAUTION TO AVOID DAMAGE
TO GAS COMPANY INSTALLATIONS.
SEE PROVINCIAL REGULATION 21072 FOR DETAILS

LOCATION APPROVED
UNDERGROUND STRUCTURES
SUPV. U/G STRUCTURES COMMITTEE DATE
NOTE:
LOCATION OF UNDERGROUND STRUCTURES AS
SHOWN ARE BASED ON THE BEST INFORMATION
AVAILABLE BUT NO GUARANTEE IS GIVEN THAT ALL
EXISTING UTILITIES ARE SHOWN OR THAT THE GIVEN
LOCATIONS ARE EXACT. CONFIRMATION OF
EXISTENCE AND EXACT LOCATION OF ALL
UTILITIES MUST BE OBTAINED FROM THE INDIVIDUAL
UTILITIES BEFORE PROCEEDING WITH CONSTRUCTION.

B.M. ELEV.		CONSTRUCTION COMPLETION DATE: YYYY MM DD	
DESIGNED BY	TS	CHECKED BY	SC
DRAWN BY	RS	APPROVED BY	KZ
SCALE: HORIZONTAL 1:250 VERTICAL 1:50		RELEASED FOR CONSTRUCTION	
DATE	2015 05 04	DATE	
NO.	REVISIONS	DATE	BY

ENGINEER'S SEAL			
ORIGINAL SIGNED BY S.R.J. COURNOYER 15/05/01			
CONSULTANT DRAWING NUMBER			

ENGINEER'S SEAL
ORIGINAL SIGNED
BY S.R.J. COURNOYER
15/05/01
CONSULTANT DRAWING NUMBER

THE CITY OF WINNIPEG
WATER AND WASTE DEPARTMENT
ENGINEERING DIVISION

2015 WATERMAIN RENEWALS

VALOUR ROAD
133 S OF NOTRE DAME AVENUE TO
190 S OF NOTRE DAME AVENUE

SHEET 11 OF 12
CITY DRAWING NUMBER
D-13991