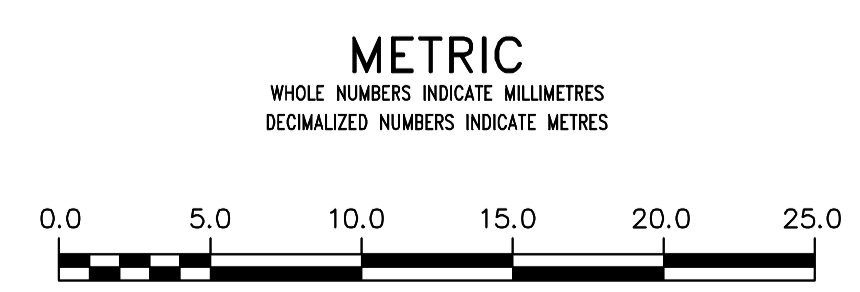
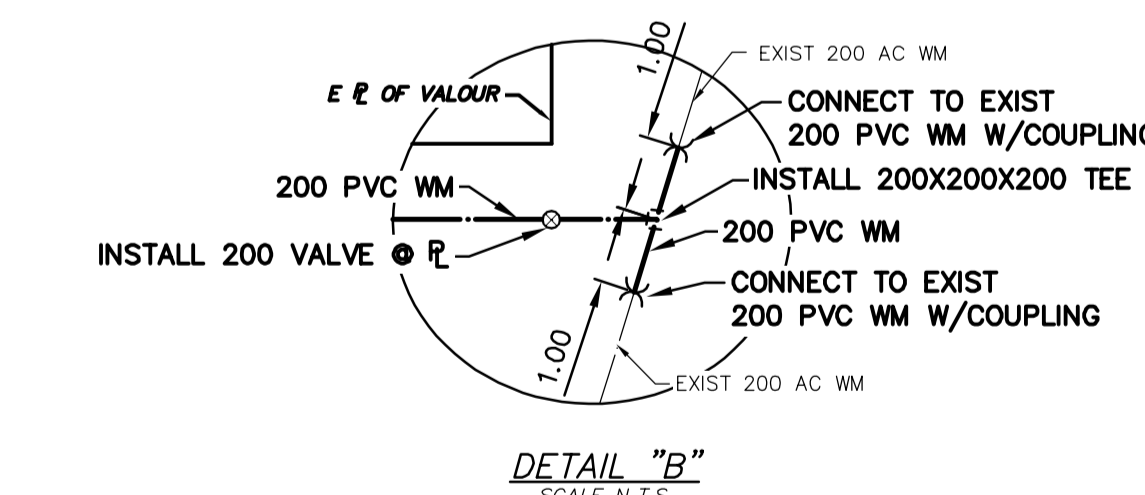
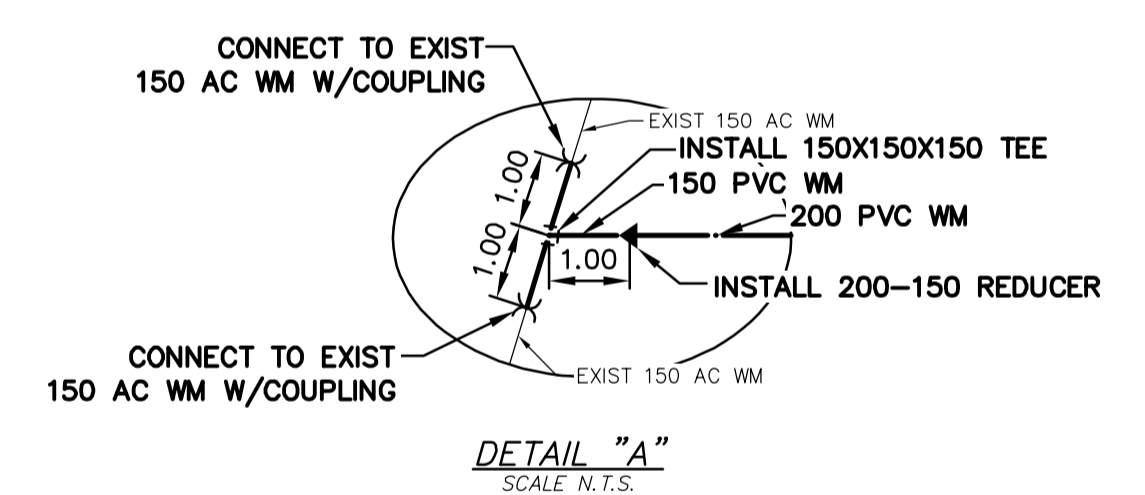
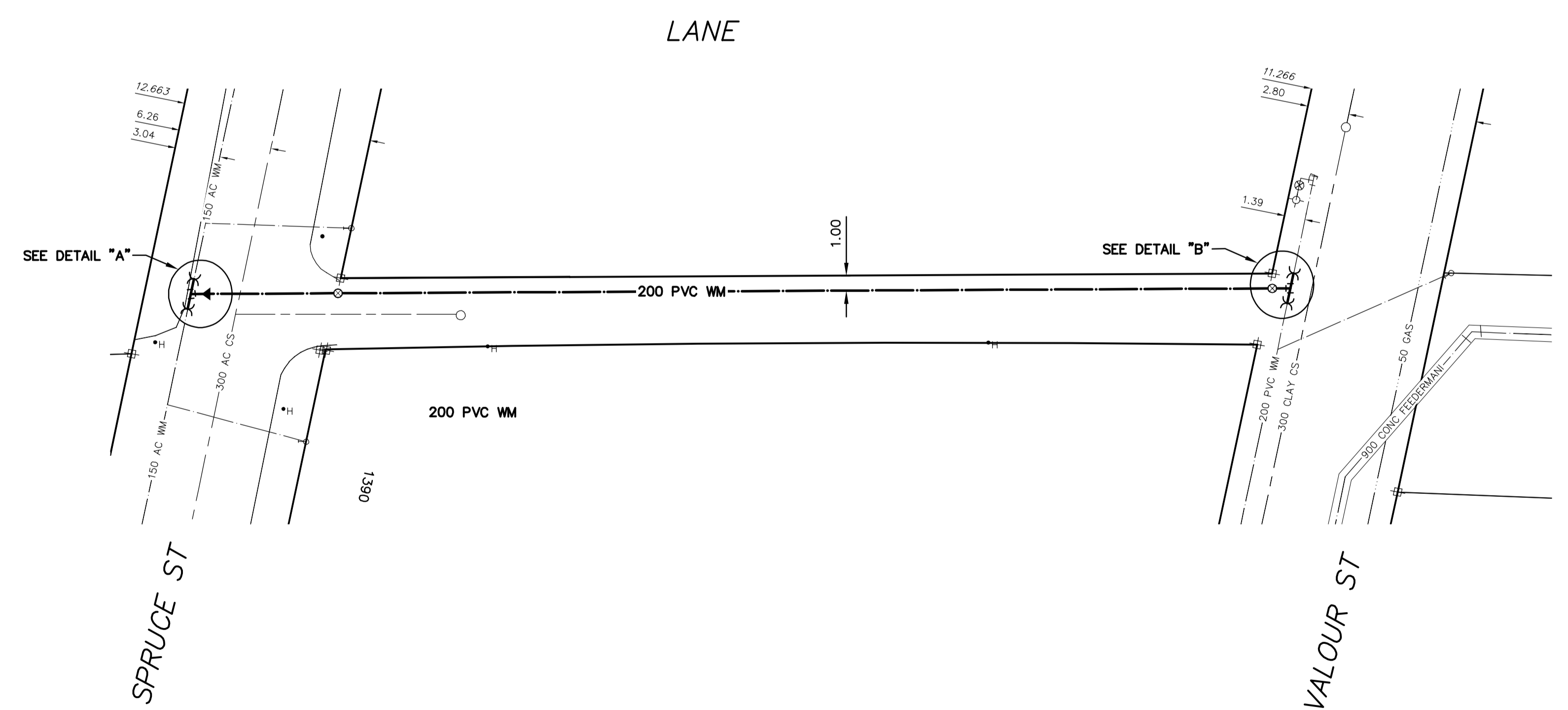


NOTE: CHAINAGES SHOWN ARE ALONG S. R. OF LANE



WARNING
IF POWER EQUIPMENT OR EXPLOSIVES ARE TO BE USED FOR EXCAVATION ON THIS PROJECT THE CONTRACTOR MUST:
1) NOTIFY THE GAS COMPANY OF THE PROPOSED LOCATION OF EXCAVATION.
2) TAKE PRECAUTION TO AVOID DAMAGE TO GAS COMPANY INSTALLATIONS.
SEE PROVINCIAL REGULATION 21072 FOR DETAILS

LOCATION APPROVED UNDERGROUND STRUCTURES
SUPV. U/G STRUCTURES COMMITTEE DATE
NOTE:
LOCATION OF UNDERGROUND STRUCTURES AS SHOWN ARE BASED ON THE BEST INFORMATION AVAILABLE BUT NO GUARANTEE IS GIVEN THAT ALL EXISTING UTILITIES ARE SHOWN OR THAT THE GIVEN LOCATIONS ARE EXACT. CONFIRMATION OF EXISTENCE AND EXACT LOCATION OF ALL SERVICES MUST BE OBTAINED FROM THE INDIVIDUAL UTILITIES BEFORE PROCEEDING WITH CONSTRUCTION.

B.M. ELEV.			
CONSTRUCTION COMPLETION DATE: YYYY MM DD			
DESIGNED BY	TS	CHECKED BY	SC
DRAWN BY	RS	APPROVED BY	KZ
SCALE: HORIZONTAL 1: 250 VERTICAL 1: 50		RELEASED FOR CONSTRUCTION	
NO.	REVISIONS	DATE	BY
PLOT DATE: 2015 05 04			

ENGINEER'S SEAL	
ORIGINAL SIGNED BY S.R.J. COURNOYER	
15/05/01	
CONSULTANT DRAWING NUMBER	
-	

FOR INDEX SEE D-13981

NOTE: ALL VALVES TO BE INSTALLED COUNTER-CLOCKWISE TO CLOSE

THE CITY OF WINNIPEG
WATER AND WASTE DEPARTMENT
ENGINEERING DIVISION

2015 WATERMAIN RENEWALS

LANE
SPRUCE STREET TO VALOUR ROAD

SHEET 12 OF 12
CITY DRAWING NUMBER
D-13992