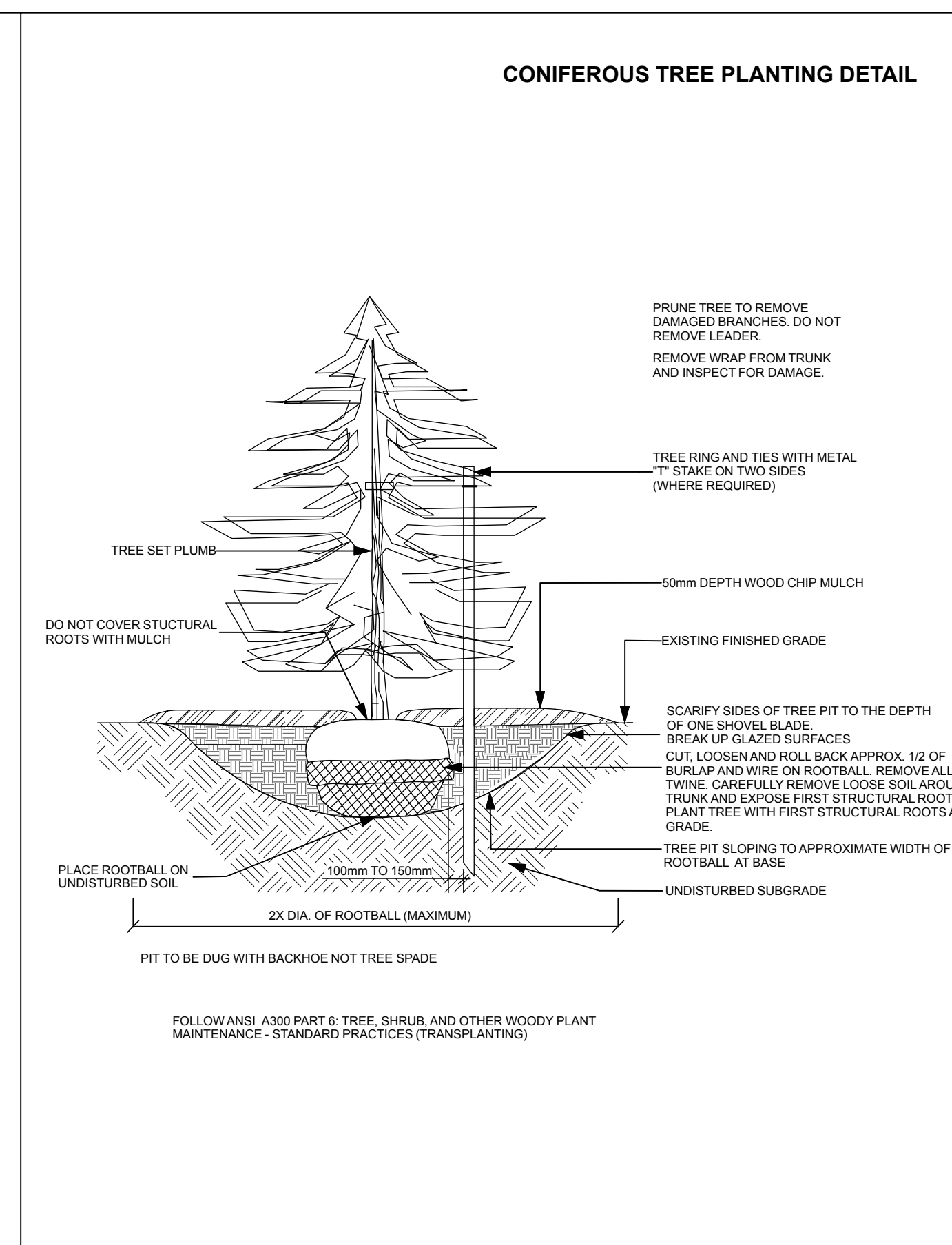
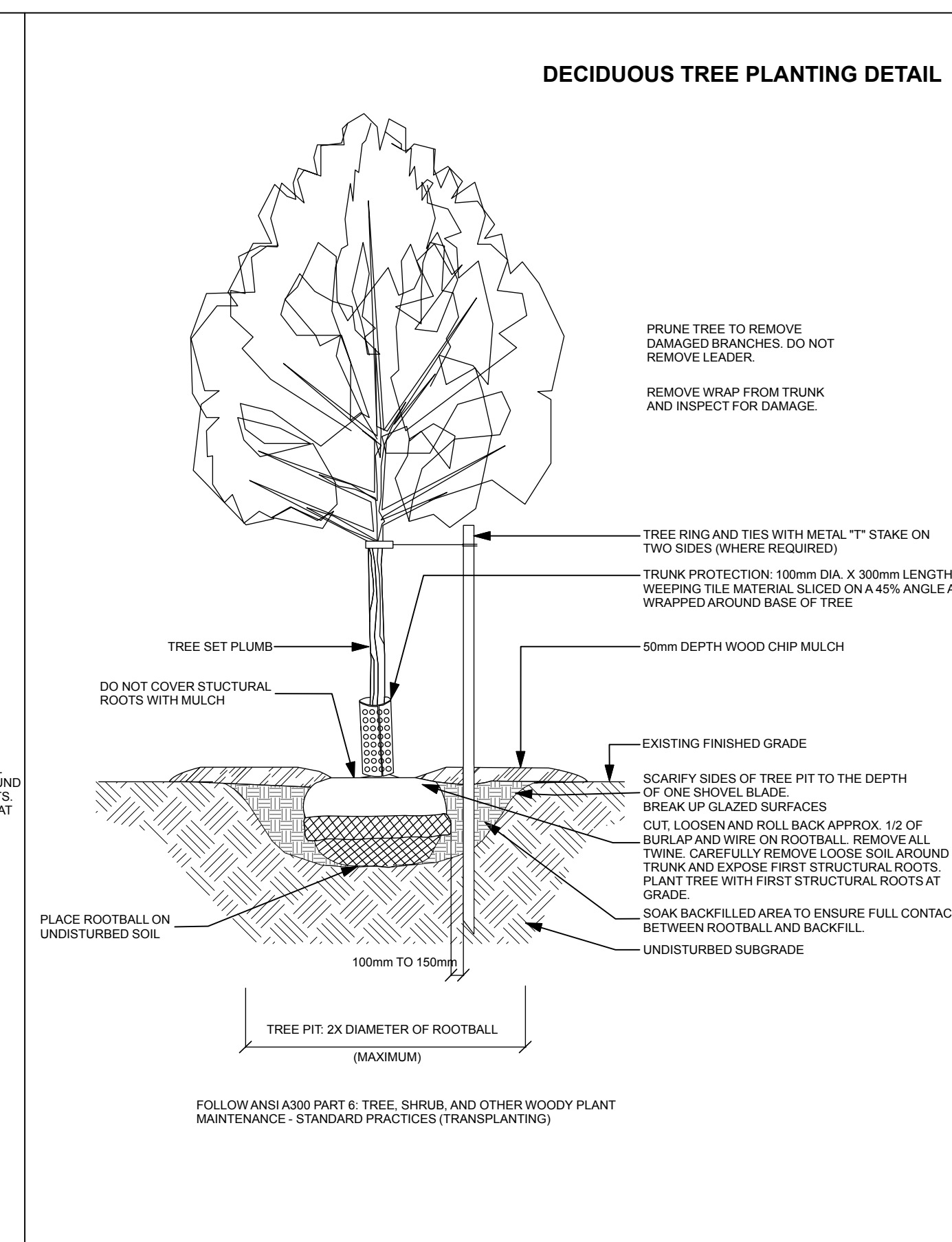


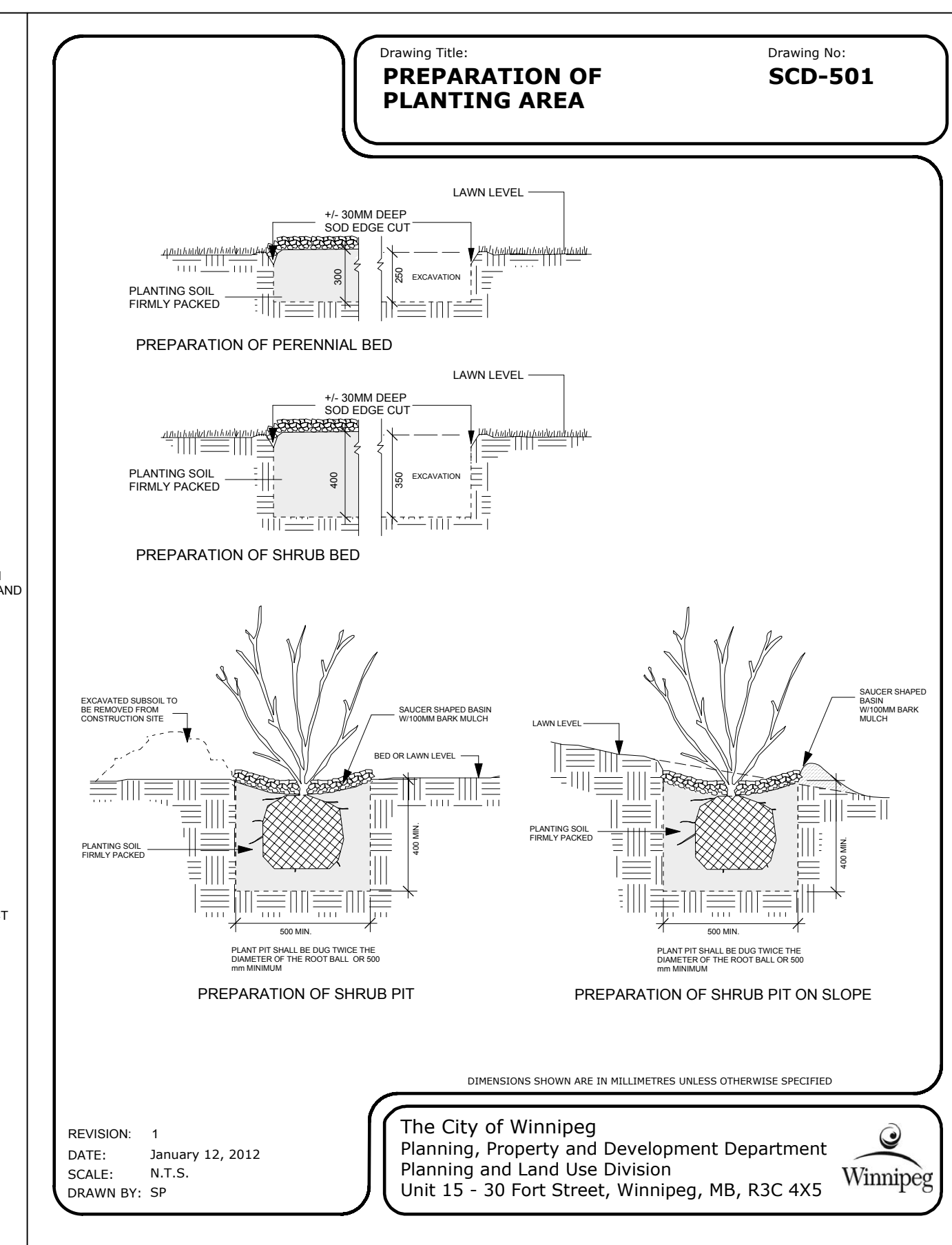
1 Test Plot Tree Planting Detail
LS-501 NTS



2 Coniferous Tree Planting Details
LS-501 NTS



3 Deciduous Tree Planting Details
LS-501 NTS



4 Preparation of Planting Area - Shrub Details
LS-501 NTS

General Notes

- All dimensions to be verified on site. Layout and elevations of all park areas, pathways and fences shall be staked by approved surveyor and reviewed and approved by landscape architect and civil engineer prior to construction.
- Do not scale drawings for construction. Contractor to verify all existing conditions and dimensions required to perform the work and report any discrepancies to the landscape architect prior to commencing work.
- All dimensions are in metric (meters m).
- Base drawing and survey data provided by City of Winnipeg.
- Contractor shall report any discrepancies between the drawings and site conditions prior to commencement of the work.
- Where Landscape drawings show engineering information, such information is for informational purposes only. Do not construct engineering works from these drawings.
- Where applicable, refer to grading plan for grading information.
- All work to be carried out in conformance with codes and bylaws of the authorities having jurisdiction.

- During construction, existing roads and fences are to be protected to City of Winnipeg Standards. The contractor, at their own expense, is responsible to repair any damage caused during construction to City of Winnipeg Standards.
- Consult with appropriate utility prior to construction activity. All utility locations are the responsibility of the Contractor. Hand dig within the limits recommended by the service utility. Utility conflicts with proposed tree locations must be reported immediately to the Landscape Architect.

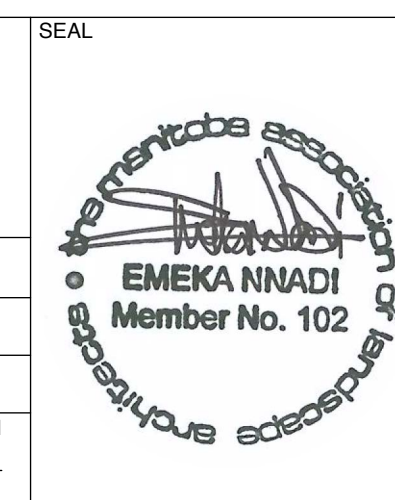
LOCATION APPROVED UNDERGROUND STRUCTURES

SUPV. U/G STRUCTURES COMMITTEE DATE

NOTE:
LOCATION OF UNDERGROUND STRUCTURES AS SHOWN ARE BASED ON THE BEST INFORMATION AVAILABLE BUT NO GUARANTEE IS GIVEN THAT ALL EXISTING UTILITIES ARE SHOWN OR THAT THE GIVEN LOCATIONS ARE EXACT. CONFIRMATION OF EXISTENCE AND EXACT LOCATION OF ALL SERVICES MUST BE OBTAINED FROM THE INDIVIDUAL UTILITIES BEFORE PROCEEDING WITH CONSTRUCTION.

NO.	ISSUE/REVIEW NOTES	DATE	NO. REVISIONS	DATE
D	ISSUED FOR TENDER	15-4-15		
C	99% SUBMISSION TO THE CITY	15-4-10		
B	86% SUBMISSION TO THE CITY	15-3-31		
A	33% SUBMISSION TO THE CITY	1-30-15		

nadi design		289 Garry St., Suite 300, Winnipeg, MB, R3C 1H9 T: (204) 669-6234 www.nadidesign.com	
DESIGNED BY	KM	CHECKED BY	EN
DRAWN BY	KM/DL	APPROVED BY	EN
SHEET SCALE	AS INDICATED	RELEASED FOR CONSTRUCTION	
DATE	APRIL 2015	DATE	



Client: CITY OF WINNIPEG

Project Title: BRADY ROAD RESOURCE MANAGEMENT FACILITY LANDSCAPE PLAN IMPLEMENTATION PHASE 1

Sheet Title: TYPICAL SOFTSCAPE DETAILS

SHEET 7 OF 7
CAD FILE LS-501
DRAWING NUMBER LS-501