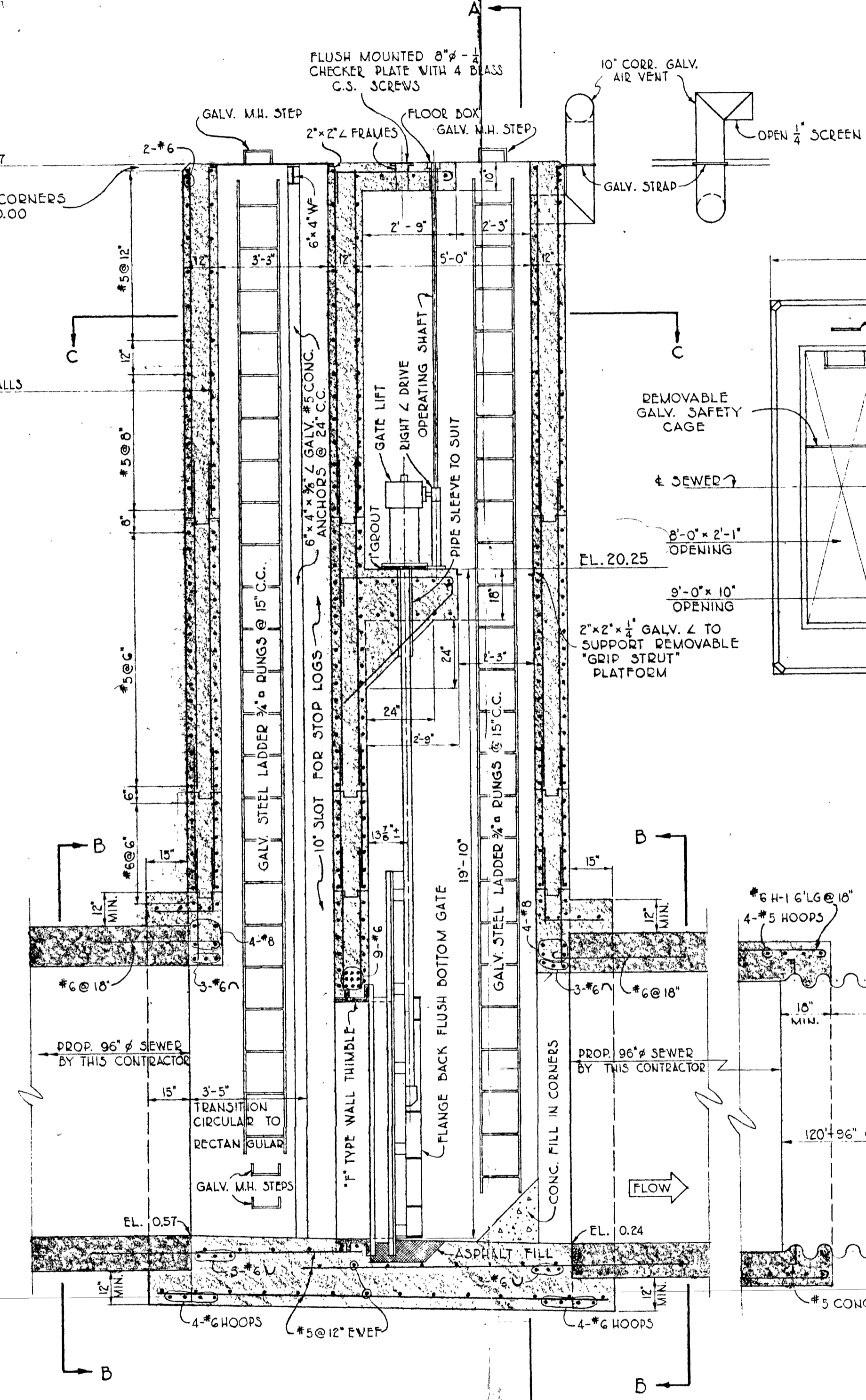
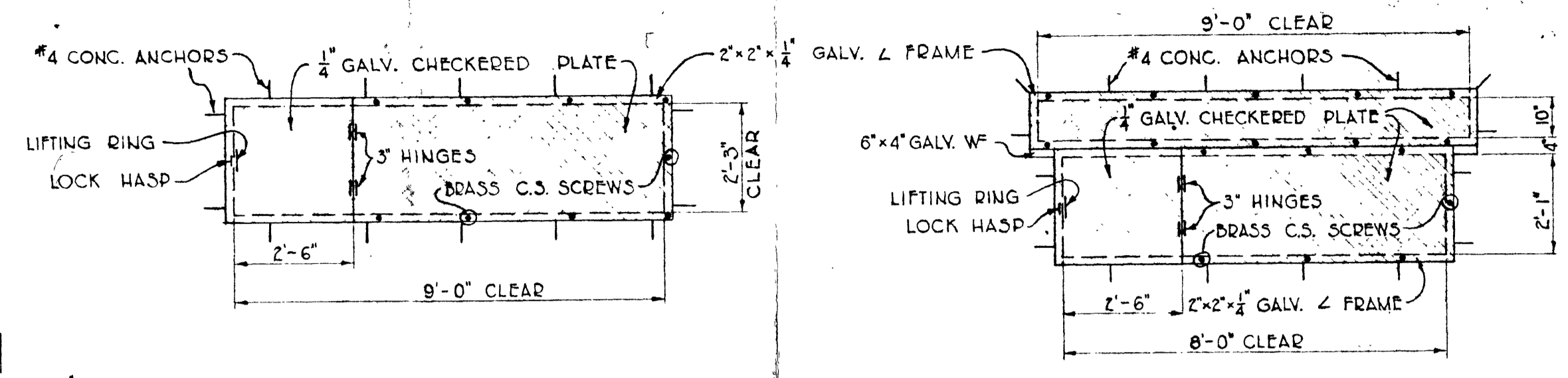


SECTION "A-A"

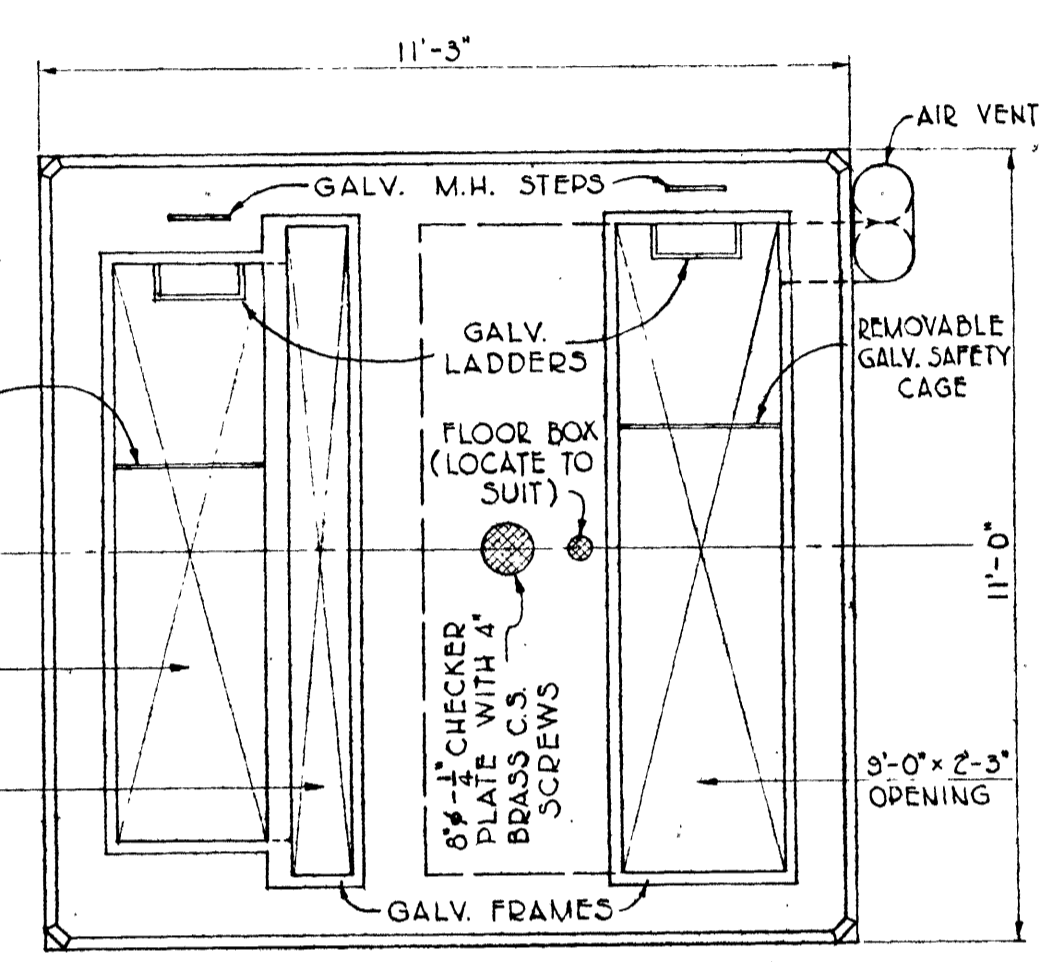


SECTIONAL ELEVATION

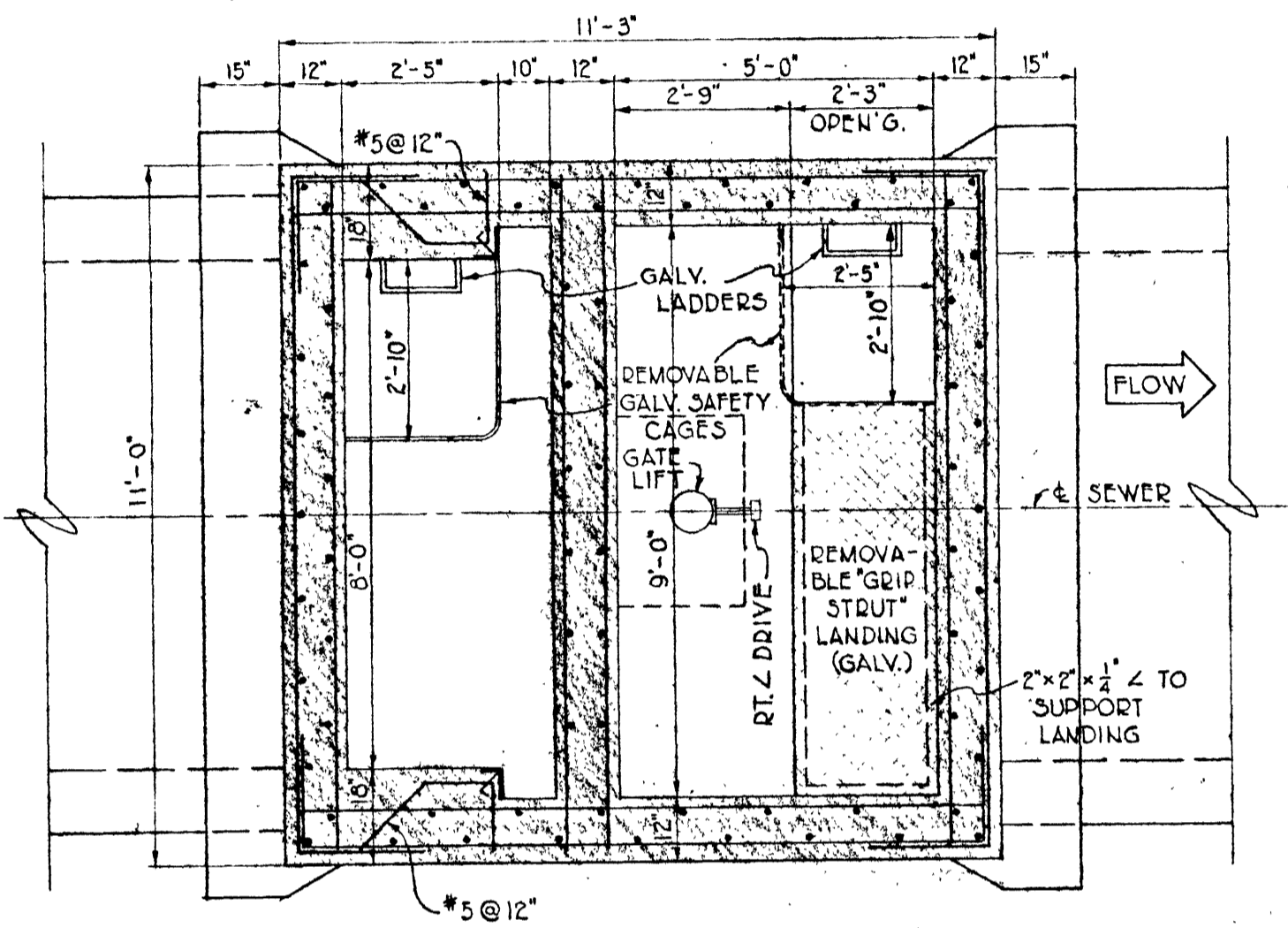


HATCH COVERS & FRAMES

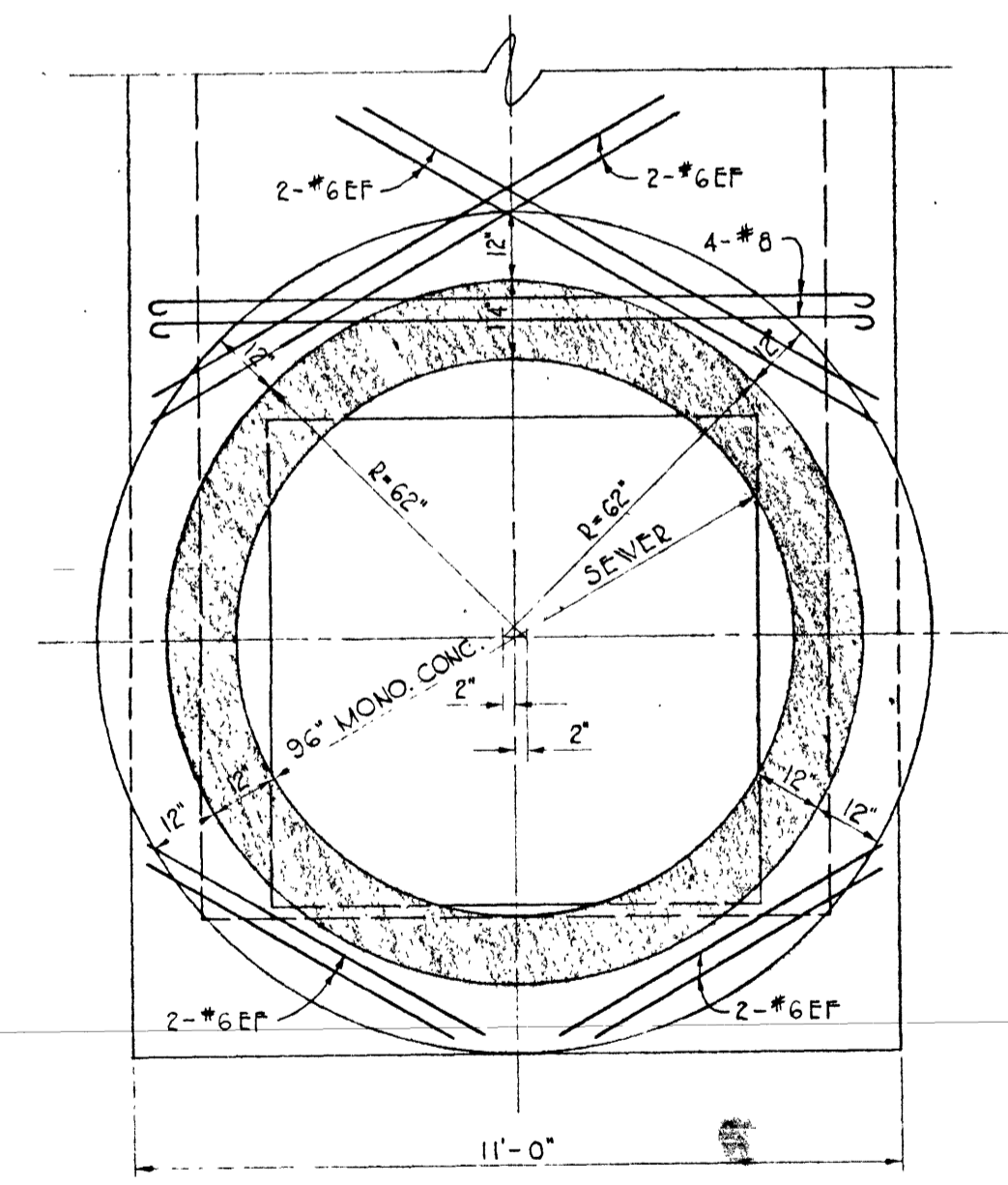
NOTE: ALL COVERS TO BE FLUSH WITH TOP OF CONCRETE AT EL. 32.25



TOP PLAN



SECTION "C-C"



SECTION "B-B"

NOTES
 1. ALL STEEL 2 1/2" CLEAR
 2. FOR LOCATION SEE DVG. SC15745

THE METROPOLITAN CORPORATION OF GREATER WINNIPEG
 WATERWORKS AND WASTE DISPOSAL DIVISION
 APPROVED UNDER BYLAW 19
 APR 28 1966

FILE: D-B-K DIST. CODE #290-022-

DETAILS OF RIVER AV. STORM RELIEF
 GATE CHAMBER
 LOCATED IN FORT ROUGE PARK

CITY OF WINNIPEG
 ENGINEERING DEPARTMENT
 W. D. HURST, CITY ENGINEER
 J. B. STRIOWSKI, DEPUTY CITY ENGINEER

DRAWN BY: [Signature] DATE: APR 66
 TRACED BY: [Signature]
 CHECKED BY: [Signature]
 APPROVED BY: [Signature]

SCALE: 3/8" = 1'-0"
 DRAWING NO. SC 15753

FILE # GC 10049 V-786