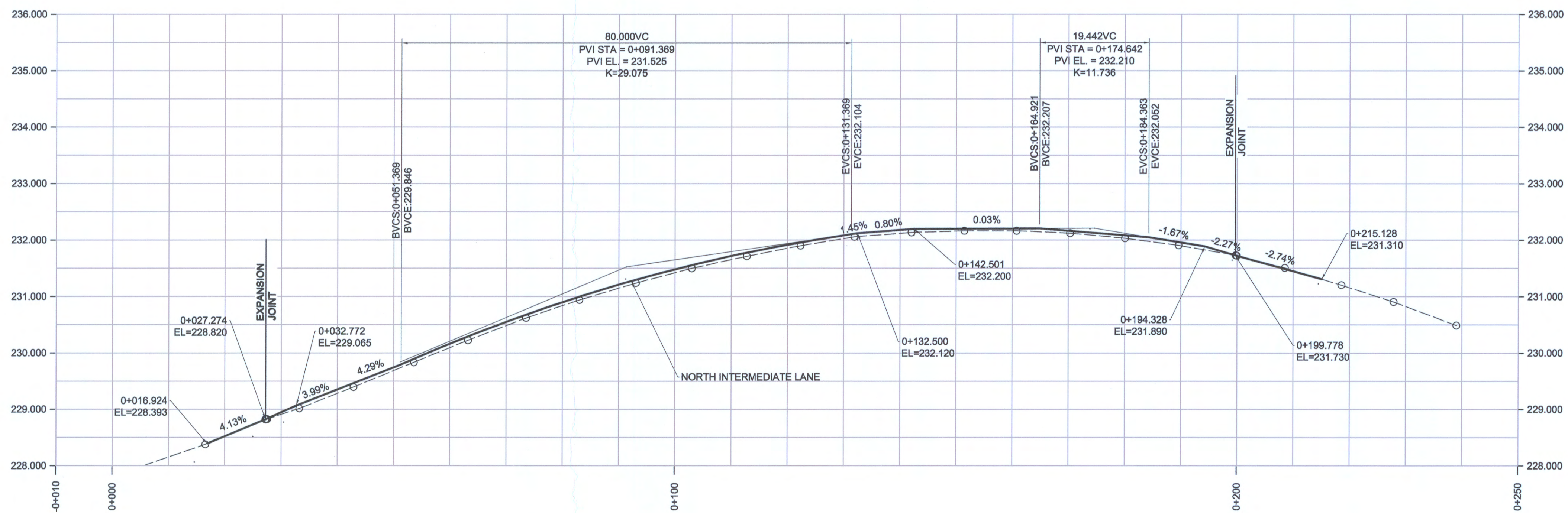


**NORTH GUTTER**



**NORTH INTERMEDIATE LANE**



METRIC  
WHOLE NUMBERS INDICATE MILLIMETRES  
DECIMALIZED NUMBERS INDICATE METRES

150 mm W.M.		150 mm W.M.		HYDRO		C PROFILE	
◇	WATERMAIN	+	HYDRANT	—	M.T.S.	—	NORTH/WEST GUTTER
⊙	VALVE	⊙	MANHOLE	—	CONCRETE	—	SOUTHWEST GUTTER
⊙	LAND DRAINAGE SEWER	⊙	CATCH BASIN	—	ASPHALT	—	N/W PROPERTY LINE
⊙	WASTEWATER SEWER	⊙	CATCH PIT	—	PROPERTY LINE	—	S/E PROPERTY LINE
⊙	MANHOLE	⊙	JUNCTIONS	—	SURVEY BAR	—	
⊙	CATCH BASIN	⊙	CULVERT	—	ELEVATION	(35.750)	
⊙	CATCH PIT	⊙	GAS	—	TREE		
⊙	JUNCTIONS	⊙		—	CONCRETE SIDEWALK		
⊙	CULVERT	⊙		—	FENCE		
⊙	GAS	⊙		—			
⊙	EXISTING	⊙	PROPOSED	—	EXISTING	—	PROPOSED

LOCATION APPROVED  
UNDERGROUND STRUCTURES

SUPV. U/G STRUCTURES COMMITTEE DATE

NOTE:  
LOCATION OF UNDERGROUND STRUCTURES AS SHOWN ARE BASED ON THE BEST INFORMATION AVAILABLE. BUT NO GUARANTEE IS GIVEN THAT ALL EXISTING UTILITIES ARE SHOWN OR THAT THE GIVEN LOCATIONS ARE EXACT. CONFIRMATION OF EXISTENCE AND EXACT LOCATION OF ALL SERVICES MUST BE OBTAINED FROM THE INDIVIDUAL UTILITIES BEFORE PROCEEDING WITH CONSTRUCTION.

B.M.	ELEV.	DATE	BY
SOUTH WEST BOLT OF LIGHT STANDARD, EAST OF MAIN STREET AND SOUTH OF RAIL BRIDGE.	227.646		
1	ISSUED FOR TENDER	15/05/06	KC
NO.	REVISIONS	DATE	BY

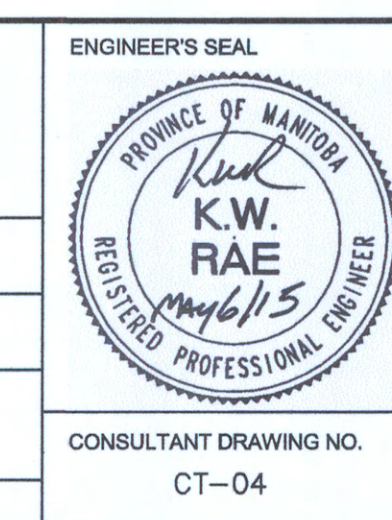
DESIGNED BY SS  
DRAWN BY SS

CHECKED BY MM  
APPROVED BY KWR

HOR. SCALE: 1:50  
VERTICAL: 1:50

RELEASED FOR CONSTRUCTION BY: *[Signature]*

DATE: 2015/03/05



THE CITY OF WINNIPEG  
PUBLIC WORKS DEPARTMENT  
ENGINEERING DIVISION

**NORWOOD NORTHBOUND BRIDGE OVER THE RED RIVER - 2015 DECK REHABILITATION**

PAVEMENT PROFILE  
1 OF 2

CITY DRAWING NUMBER B103-15-05  
SHEET 04 OF 10

CONSULTANT DRAWING NO. CT-04

P:\60333680\600-WORK\910-CAD\2D-SHEETS\CONTRACT-04.DWG