

\*\*\* MARION AVENUE MEDIAN LANE IS TO BE CLOSED 1ST, THEN ST. MARY'S ROAD \*\*\*

NOTE:  
CONTRACTOR TO ERECT DESIGNATED CONSTRUCTION ZONE SIGNAGE AT WORK AREA LIMITS AS PER 2015 EDITION TO MANUAL OF TEMPORARY TRAFFIC CONTROL.

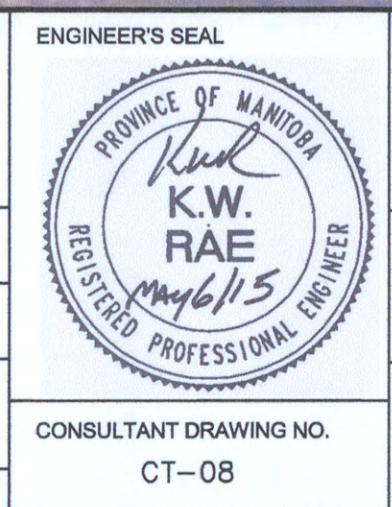
NOTE:  
SPEED LIMIT 60 KPH GENERAL LAYOUT ONLY. SEE C.O.W. TRAFFIC CONTROL MANUAL FOR SIGN SPACING



**METRIC**  
WHOLE NUMBERS INDICATE MILLIMETRES  
DECIMALIZED NUMBERS INDICATE METRES

LOCATION APPROVED UNDERGROUND STRUCTURES		B.M. ELEV.
SUPV. U/G STRUCTURES COMMITTEE	DATE	
NOTE: LOCATION OF UNDERGROUND STRUCTURES AS SHOWN ARE BASED ON THE BEST INFORMATION AVAILABLE. BUT NO GUARANTEE IS GIVEN THAT ALL EXISTING UTILITIES ARE SHOWN OR THAT THE GIVEN LOCATIONS ARE EXACT. CONFIRMATION OF EXISTENCE AND EXACT LOCATION OF ALL SERVICES MUST BE OBTAINED FROM THE INDIVIDUAL UTILITIES BEFORE PROCEEDING WITH CONSTRUCTION.		
1	ISSUED FOR TENDER	15/05/06 KC
NO.	REVISIONS	DATE BY

<b>AECOM</b>	
DESIGNED BY KWR	CHECKED BY KWR
DRAWN BY PAAP/KM	APPROVED BY EBL
HOR. SCALE: 1:600	RELEASED FOR CONSTRUCTION BY: <i>[Signature]</i>
DATE 2015/03/05	DATE <i>[Signature]</i>



<b>THE CITY OF WINNIPEG</b> PUBLIC WORKS DEPARTMENT ENGINEERING DIVISION		CITY DRAWING NUMBER B103-15-09
<b>NORWOOD NORTHBOUND BRIDGE OVER THE RED RIVER - 2015 DECK REHABILITATION</b>		SHEET 08 OF 10
TRAFFIC SIGNING PLAN STAGE 1 - MEDIAN LANE CLOSURE		
CONSULTANT DRAWING NO. CT-08		

P:\10333585\100-WORK\910-CAO\_V01-SHEETS\CONTRACT-08.DWG