

CONCRETE DEMOLITION AND REMOVAL WITHIN 3 METERS HORIZONTALLY OF THE AQUEDUCT AND/OR FEEDERMAIN SHALL BE COMPLETED BY SAWCUTTING AND REMOVAL, OR BY THE USE OF HAND HELD MACHINERY. USE OF MACHINE MOUNTED CONCRETE BREAKERS ABOVE THE AQUEDUCT AND/OR FEEDERMAIN SHALL NOT BE PERMITTED.

DO NOT OPERATE VIBRATORY EQUIPMENT OVER OR WITHIN 3.0 METERS OF THE AQUEDUCT AND/OR FEEDERMAIN.

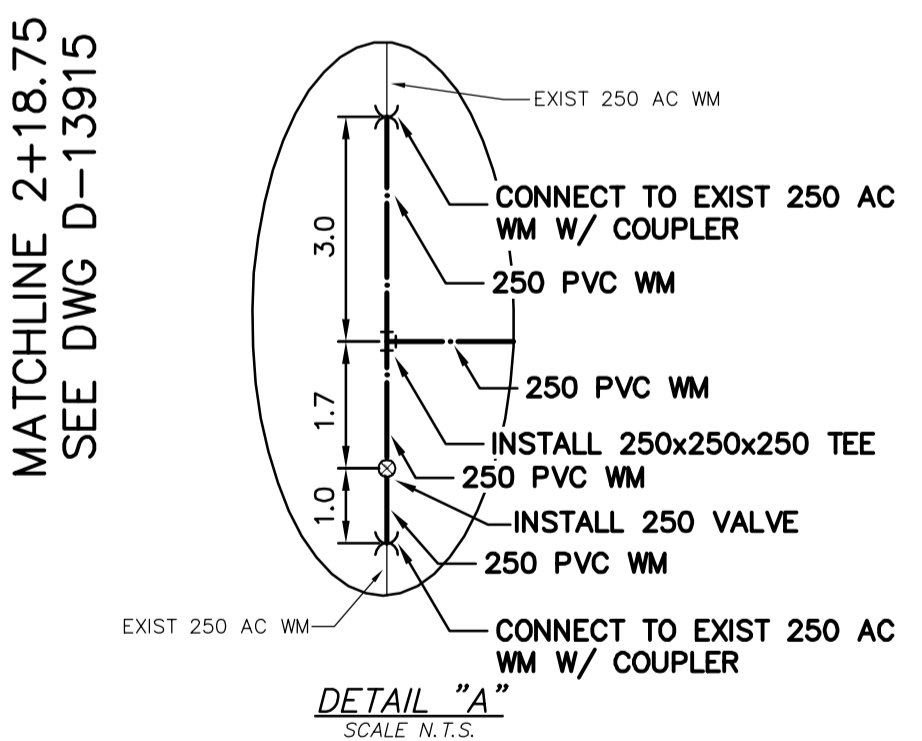
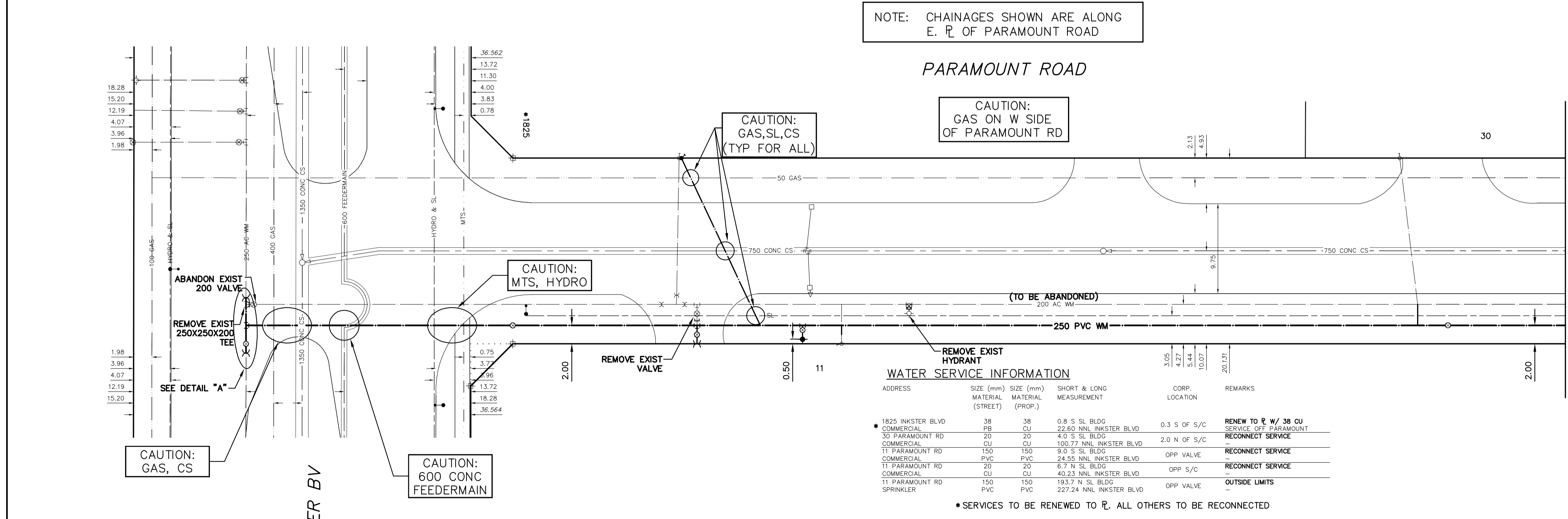
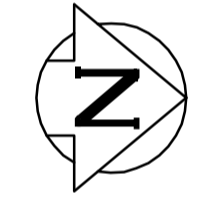
A MINIMUM CLEARANCE OF 1.0 METER MUST BE PROVIDED BETWEEN THE UNDERSIDE OF ANY EXISTING AQUEDUCT OR FEEDERMAIN AND THE TOP OF THE PROPOSED WORKS.

A MINIMUM CLEARANCE OF 0.5 METER MUST BE PROVIDED BETWEEN THE UNDERSIDE OF ANY EXISTING AQUEDUCT OR FEEDERMAIN BY TRENCHLESS OR OPEN TRENCH.

A SHAFT MUST BE EXCAVATED BY SOFT DIG METHODS 4.0 METERS FROM THE CENTERLINE OF THE AQUEDUCT AND/OR FEEDERMAIN TO CONFIRM THE ALIGNMENT AND ELEVATION OF THE DRILLING ROD BEFORE IT CROSSES OVER OR UNDER THE AQUEDUCT AND/OR FEEDERMAIN. THIS CONFIRMATION MUST BE WITNESSED BY A CITY REPRESENTATIVE.

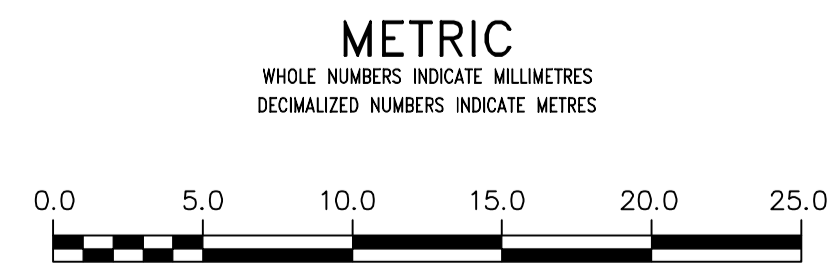
PRIOR TO ANY CONSTRUCTION, THE AQUEDUCT OR FM MUST BE EXPOSED BY A SOFT DIG METHOD

NOTE: CHAINAGES SHOWN ARE ALONG E. R. OF PARAMOUNT ROAD



FOR INDEX SEE D-13910

NOTE: ALL VALVES TO BE INSTALLED COUNTER-CLOCKWISE TO CLOSE



WARNING

IF POWER EQUIPMENT OR EXPLOSIVES ARE TO BE USED FOR EXCAVATION ON THIS PROJECT THE CONTRACTOR MUST:

- 1) NOTIFY THE GAS COMPANY OF THE PROPOSED LOCATION OF EXCAVATION.
- 2) TAKE PRECAUTION TO AVOID DAMAGE TO GAS COMPANY INSTALLATIONS.

SEE PROVINCIAL REGULATION 21072 FOR DETAILS

LOCATION APPROVED UNDERGROUND STRUCTURES

SUPV. U/G STRUCTURES COMMITTEE DATE

NOTE: LOCATION OF UNDERGROUND STRUCTURES AS SHOWN ARE BASED ON THE BEST INFORMATION AVAILABLE BUT NO GUARANTEE IS GIVEN THAT ALL EXISTING UTILITIES ARE SHOWN OR THAT THE GIVEN LOCATIONS ARE EXACT. CONFIRMATION OF EXISTENCE AND EXACT LOCATION OF ALL SERVICES MUST BE OBTAINED FROM THE INDIVIDUAL UTILITIES BEFORE PROCEEDING WITH CONSTRUCTION.

B.M. ELEV.

CONSTRUCTION COMPLETION DATE: YYYY MM DD

NO.	REVISIONS	DATE	BY

DESIGNED BY: LKC

CHECKED BY: SC

DRAWN BY: RS

APPROVED BY: KZ

SCALE: HORIZONTAL 1:250, VERTICAL 1:50

RELEASED FOR CONSTRUCTION

DATE: 2015 05 22

PLOT DATE: 2015 05 22

ENGINEER'S SEAL

ORIGINAL SIGNED BY S.R.J COURNOYER 15/05/21

CONSULTANT DRAWING NUMBER

THE CITY OF WINNIPEG

WATER AND WASTE DEPARTMENT

ENGINEERING DIVISION

2015 WATERMAIN RENEWALS

PARAMOUNT ROAD

INKSTER BOULEVARD (N R) TO 119 N OF INKSTER BOULEVARD (N R)

SHEET 5 OF 9

CITY DRAWING NUMBER D-13914