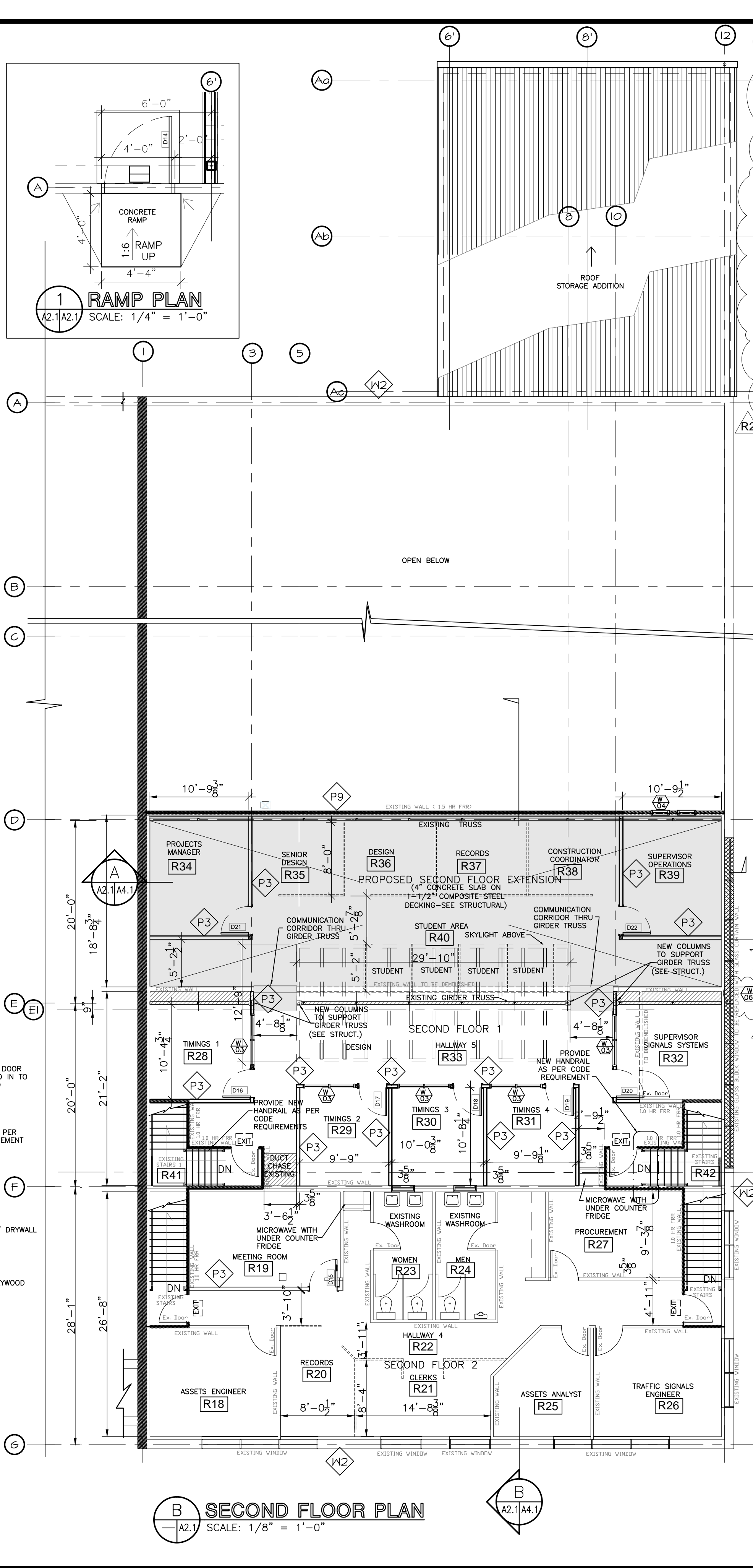


A MAIN FLOOR PLAN
SCALE: 1/8" = 1'-0"



B SECOND FLOOR PLAN
SCALE: 1/8" = 1'-0"

WALL TYPES

W1	VICWEST MESA DM40 3" INSULATED METAL PANEL WEATHER BARRIER 5/8" EXT. DRYWALL 6" STEEL STUD @ 24" O.C. BATT INSULATION 6MIL POLY VAPOUR BARRIER (1) LAYER 1/2" DRYWALL VICWEST CHANNEL WALL SHALLOW PROFILE PRE FINISHED METAL LINER
W1A	1.5HR FRR ULC M425 2" INSULATED METAL PANEL 1" POLYISO INSULATION WEATHER BARRIER MINERAL WOOL BATT INSULATION (2) LAYERS 1/2" TYPE "X" DRYWALL 6" 20 GA. STEEL STUD @ 24" O.C. VAPOUR BARRIER (2) LAYER 1/2" TYPE "X" DRYWALL METAL LINER
W1A	1.0HR FRR ULC423 VICWEST MESA DM40 3" INSULATED METAL EXTERIOR NON-COMBUSTIBLE (MINERAL FIBRE CORE) PANEL WEATHER BARRIER (1) LAYER 5/8" TYPE "X" DRYWALL 6" 20 GA. STEEL STUD @ 24" O.C. VAPOUR BARRIER MINERAL WOOL BATT INSULATION (1) LAYER 5/8" TYPE "X" DRYWALL VICWEST CHANNEL WALL SHALLOW PROFILE PRE FINISHED METAL LINER (STORAGE SIDE ONLY)
W2	EXISTING EXTERIOR WALL
P1	IN-FILL WALL TO MATCH EXISTING UNLESS OTHERWISE NOTED
P2	(1) LAYER 1/2" GYPSUM BOARD 3-5/8" STEEL STUDS @ 16" O/C BATT INSULATION (1) LAYER 1/2" GYPSUM BOARD
P2A	(1) LAYER 1/2" GYPSUM BOARD 3-5/8" STEEL STUDS @ 16" O/C BATT INSULATION (1) LAYER 1/2" GYPSUM BOARD METAL LINER (STORAGE SIDE ONLY)
P3	NBC A-9.10.3.1.A. S14b STC 59 (2) LAYER 1/2" TYPE "X" GYPSUM BOARD 3-5/8" STEEL STUDS @ 16" O/C 3-1/2" THK. SOUND ABSORPTIVE MATERIAL RESILIENT METAL CHANNELS ON ONE SIDE @ 24" O/C (2) LAYER 1/2" TYPE "X" GYPSUM BOARD (EXTEND WALL TO UNDERSIDE OF SLAB/ROOF)
P4	(1) LAYER 1/2" GYPSUM BOARD 6" STEEL STUDS @ 16" O/C BATT INSULATION (1) LAYER 1/2" GYPSUM BOARD
P4A	NBC A-9.10.3.1.A. S9b STC 57 (2) LAYER 1/2" TYPE "X" GYPSUM BOARD 6" STEEL STUDS @ 16" O/C 3-1/2" THK. SOUND ABSORPTIVE MATERIAL (2) LAYER 1/2" TYPE "X" GYPSUM BOARD (EXTEND WALL TO UNDERSIDE OF SLAB/ROOF)
P5	1" THK. HDPE TOILET PARTITIONS, DOORS AND PILASTERS - HADRIAN ELITE SERIES STAINLESS STEEL
P6	NBC A-9.10.3.1.A. S5c 1.0HR FRR (1) LAYER 1/2" TYPE "X" GYPSUM BOARD 3-5/8" STEEL STUDS @ 16" O/C 3-1/2" THK. MINERAL FIBRE BATT INSULATION (2) LAYER 1/2" TYPE "X" GYPSUM BOARD (EXTEND WALL TO UNDERSIDE OF SLAB/ROOF)
P7	GLASS PARTITION - 1.0HR FIRE RATING NBC A-9.10.3.1.A. S5c 1.0HR FRR (1) LAYER 1/2" TYPE "X" GYPSUM BOARD 3-5/8" STEEL STUDS @ 16" O/C 3-1/2" THK. MINERAL FIBRE BATT INSULATION (2) LAYER 1/2" TYPE "X" GYPSUM BOARD (EXTEND WALL TO UNDERSIDE OF SLAB/ROOF)
P8	BELOW NEW WINDOW: EXISTING FURRING WALL (1) LAYER 1/2" TYPE "X" GYPSUM BOARD VAPOUR BARRIER 6" STEEL STUD @ 16" O/C BATT INSULATION (1) LAYER 5/8" EXTERIOR SHEATHING WEATHER MEMBRANE 2" RIGID INSULATION METAL CLADDING
P9	EXISTING 1.5 HR FRR 2 LAYERS 5/8" UL DRYWALL 2x6 WOOD STUD MINERAL FIBRE ABSORPTIVE MATERIAL 2 LAYERS 5/8" UL DRYWALL

- GENERAL NOTES ON 1.0 HR FIRE RATED WALL/CEILING ASSEMBLY:**
- FIRE RATED PARTITION TO EXTEND TO UNDERSIDE OFFLOOR/ROOF DECK AND FIRE CAULKED.
 - DUCTWORK PENETRATIONS TO BE PROVIDED WITH FIRE DAMPERS AND FIRE CAULKED.
 - ELECTRICAL CONDUITS AND CABLE TRAY PENETRATIONS TO BE FIRE CAULKED AS PER ELECTRICAL CODE.
 - DOOR GLAZING ON DESIGNATED EXIT PATHS TO BE GEORGIAN WIRED GLASS 1,240 in² (0.80m²) MAXIMUM.

TRUE DESIGN
NORTH

02	ISSUED FOR ADDENDUM 02	JULY 10 2015	AR
01	ISSUED FOR TENDER	JUNE 10 2015	AR
00	ISSUED FOR CONSTRUCTION	JUNE 7 2015	AR
REV	DESCRIPTION	DATE	BY

PROVINCE OF MANITOBA
NEIL COOPER
REGISTERED ARCHITECT
JULY 10 2015

PROVINCE OF MANITOBA
NEIL COOPER ARCHITECT INC.
REGISTERED ARCHITECTURAL CORPORATION
JULY 10 2015
No.090

THIS DRAWING MUST NOT BE SCALED.

THE GENERAL CONTRACTOR SHALL VERIFY ALL DIMENSIONS, DATUMS AND LEVELS PRIOR TO COMMENCEMENT OF WORK AND IS HELD RESPONSIBLE FOR REPORTING ANY DISCREPANCY OR OMISSION TO NEIL COOPER ARCHITECT INC IMMEDIATELY.

THIS DRAWING IS THE EXCLUSIVE PROPERTY OF NEIL COOPER ARCHITECT INC AND CAN BE REPRODUCED ONLY WITH THE PERMISSION OF NEIL COOPER ARCHITECT INC, IN WHICH CASE THE REPRODUCTION MUST BEAR THEIR NAME AS THE ARCHITECTURAL FIRM.

DRAWING: **FLOOR PLANS**

PROJECT: **TRANSPORTATION MANAGEMENT CENTRE RENOVATIONS**
BID # 427-2015
 821 Elgin Ave., Winnipeg, Manitoba

Neil Cooper Architect Inc.
 10-395 Berry Street, Winnipeg, Manitoba R3J 1N6

DRAWN BY:	CHECKED BY:	SHEET NO.:	REV NO.:
AR	NC	A2.1R2	
DATE:	DEC 3, 2014		
SCALE:	AS NOTED		

14132Cont Docts\Cont Dwgs\Arch\A2.1