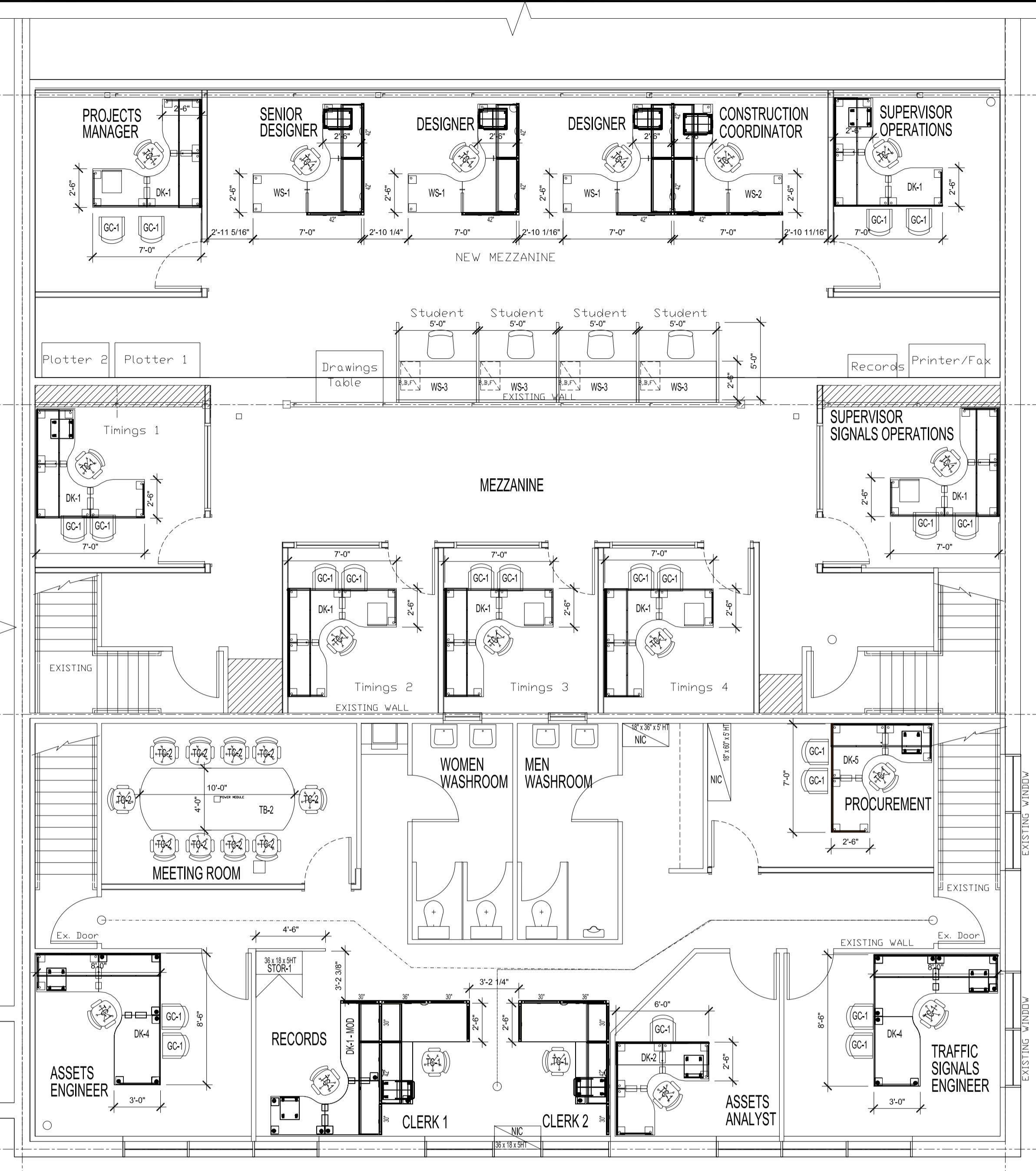


MAIN FLOOR PLAN  
SCALE: 3/16"=1'-0"



SECOND FLOOR PLAN  
SCALE: 3/16"=1'-0"

NOTES:

FURNITURE CONTACT: BF WORKPLACE  
TRACY BONNEVILLE & CHRISTINE LEOST  
PH# (204) 489 4191

No.	REVISION/DESCRIPTION	BY	DATE

FURNITURE LEGEND				
NO.	ITEMS	DESCRIPTION	MODEL NO.	QTY REQ'D
1	TC-1	Steelcase 'Amia' Task Chair Complete with pneumatic height adjustment and multi-adjustment arms. UPHOLSTERY: Grade 2 selection PLASTIC: Black	4821410	30
2	GC-1	Steelcase 'Reply' Guest Chair Complete with mesh back, 4-leg base with roll control casters and arms. UPHOLSTERY: Grade 2 selection FRAME: Platinum Metallic	466452M	29
3	SC-1	Sit On It 'Trifter' Armless Lunchroom Chair Complete with all poly seat and back, flexing back and G12 glides for vinyl flooring. FRAME: Silver or Black POLY: To be determined	971A0/G 12	48
4	TC-2	Sit On It 'WR' Conference Chair Complete with high mesh back, height adjustable arms, swivel tilt mechanism and seat depth adjustment. UPHOLSTERY: Grade 2 FRAME: Black	2223B/1 T/E3/22/ A128	24
5	ST-1	Steelcase 'Cachet' Stool Complete with pneumatic height adjustment, plastic seat and back, arms and soft roll control casters. PLASTIC: Black	4877110	6
6	KB-1	Details 'Lift & Lock' Keyboard Mechanism Complete with 18 inch radius platform, extended foam palm rest and 23 inch long track. FINISH: To be determined NOT SHOWN ON PLAN, INCLUDED WITH ALL DK'S & WS'S	L5231810 EF	30
7	LC-1	Steelcase 'Lincoln' Lounge Chair Complete with fully upholstered seat and back and aluminum post legs. LEGS: Clear Anodized Aluminum UPHOLSTERY: Black Leather	TS31801	2

FURNITURE LEGEND				
NO.	ITEMS	DESCRIPTION	MODEL NO.	QTY REQ'D
8	STOR-1	Steelcase 'Universal' Storage Cabinet with 7 adjustable shelves, flush steel front and steel top. SIZE: 18"D x 36"W x 65.5"H PAINT: To be determined	RCS1836 SKFRXS A1836	1
9	STOR-2	Steelcase 'Universal' Storage Cabinet SIZE: 24"D x 36"W x 65.5"H PAINT: To be determined		1
10	STOR-3	Spec 'Credeza Servery' Storage Cabinet SIZE: 20"D x 42"W x 38"H (Laminated top and body, Non-looking) PAINT: To be determined		1
11	WS-1	Steelcase 'Kick with Universal' Work Station L-Shaped Panel workstation. Panels at 66" high with fabric tackable acoustical skins and powered down the spine with two duplex receptacles each station. Stations include (1) mobile box/file pedestal with cushion top and 7" of overhead binder bins that are panel mounted with tasklight below. Front half of desk is open (no panel) to allow visitors and has an 18" high modesty panel at the front. TAG: Senior Designer, Designer, Designer	7 x 7	3
12	WS-2	Steelcase 'Kick with Universal' Work Station L-Shaped Panel workstation. Panels at 66" high with fabric tackable acoustical skins along the spine and 48" high fabric with 18" high clear glass panels along the front at a total height of 66" high. Panels down the spine are powered and with a total height of 66" high. Panels down the spin are powered and with two duplex receptacles. Station includes (1) mobile box/file pedestal with cushion top and 7" of overhead binder bins that are panel mounted with tasklight below. TAG: Construction Coordinator	7 x 7	1

FURNITURE LEGEND				
NO.	ITEMS	DESCRIPTION	QTY REQ'D	
13	WS-3	Steelcase 'Kick with Universal' Work Station 6' x 5' Straight Panel workstation. Panels along the spine and each end are 48" high fabric tackable acoustical with 18" high clear glass panels along the front at a total height of 66" high. Dividing centre panels are 48" high fabric tackable acoustical. Panels down the spine are powered and with two duplex receptacles per station. Each station includes (1) mobile box/file pedestal with cushion top. TAG: Student 1, Student 2, Student 3, Student 4	5	
14	RE-1	Steelcase Low Profile Floor Approximate 4'4" x 19' section of low profile raised flooring to route cables from monitors to desks. Consisting of pucks, triangles, wall scribes and edge trims.	1	
15	DK-1	Steelcase 'Universal' Desk 7' x 7' L-Shaped Station with 7" Hinged door wall mounted overhead with tasklight and tackboard below. Includes (1) mobile box/file pedestal. Includes 18" high modesty panel along the front of the station and 12" high modesty panels on each end of the station. Station is supported by pin height adjustable legs. TAG: Lab Foreman, TMC Supervisor, Projects Manager, Supervisor Operations, Timings 1, Timings 2, Timings 3, Timings 4, Timings 5	9	
16	DK-1-MOD	Steelcase 'Universal' with Steelcase 'Kick' Panel System 7' x 8'6" L-Shaped Station - partially panel mounted with shared panels with Clerks 1 station. Includes 8'6" of upper panel supported binder bin storage and mobile box/file pedestal with cushion top. Station also includes (1) Storage cabinet marked as 'STOR-1' to be priced separately. Includes (1) 30" and (1) 24" panel wall mounted to provide additional privacy to the station. Panels are all at 66" high overall. Panel at end of desk is 48" with 18" glass at top. TAG: Records	1	

FURNITURE LEGEND				
NO.	ITEMS	DESCRIPTION	QTY REQ'D	
17	DK-2	Steelcase 'Universal' Desk 6' x 6' L-Shaped Station with 6" Hinged door wall mounted overhead with tasklight and tackboard below. Includes (1) mobile box/file pedestal. Includes 18" high modesty panel along the front of the station and 12" high modesty panels on each end of the station. Station is supported by pin height adjustable legs. TAG: Foreman 1, Foreman 2, Assets Analyst	3	
18	DK-3	Mayline 'Techworks' Desk Lab stations. Note these are 72" wide x 36" deep overall. Qty (5) stations with: Qty (1) 1172" w x 36" d base frame with high pressure laminate top Qty (1) 1172" w x 48" h upper frame Qty (2) 1272" w x 18" d Laminate fixed shelves Qty (1) 1172" w Service bar 15AMP Power Strip with 16 outlets and 15' cord Qty (1) 1172" w x 12" d partial depth base shelf Qty (1) 1172" w x 36" d base frame with high pressure laminate top Qty (1) 1172" w x 48" h upper frame Qty (3) 24" w x 12" d lockable storage bins Qty (1) 1172" w Service bar 15AMP Power Strip with 16 outlets and 15' cord Qty (1) 1172" w x 12" d partial depth base shelf Qty (1) 124" w x 24" h peg boards	6	
19	DK-4	Steelcase 'Universal' Desk 8'6" x 8' L-Shaped with 8" Hinged door wall mounted overhead with tasklight and tackboard below. Includes (1) mobile box/file pedestal. Includes 18" high modesty panel along the front of the station and 12" high modesty panels on each end of the station. Station is supported by pin height adjustable legs. TAG: Traffic Signals Engineer, Assets Engineer	2	

FURNITURE LEGEND				
NO.	ITEMS	DESCRIPTION	QTY REQ'D	
20	DK-5	Steelcase 'Universal' Desk 7' x 6'5" L-Shaped with 6" Hinged door wall mounted overhead with tasklight and tackboard below. Includes (1) mobile box/file pedestal. Includes 18" high modesty panel along the front of the station and 12" high modesty panels on each end of the station. Station is supported by pin height adjustable legs. TAG: Procurement	1	
21	DK-6	Steelcase 'Universal' Desk TMC Area 5'6" x 7'6" (3) & 5'6" x 7' (1) L-Shaped desks with (1) mobile box/file pedestal. Modesty panels only on two end desks facing door. Stations are supported by pin height adjustable legs. (1) only shared 7" hinged door wall mounted overhead with tasklight and tackboard below. Complete with under worksurface cable trays to hold wires cleanly below the desks.	6	
22	CLERK 1&2	5'6" x 6'4" L-Shaped panel workstations. Panels at 66" high and powered with two duplex receptacles each station. Panels across front are 48" high fabric with 18" high clear glass on top for overall 66" height. All other panels are full fabric tackable acoustical fabric. Stations include (1) mobile box/file pedestal with cushion top and 6" d overhead binder bins that are panel mounted with tasklight below. Worksurfaces are mounted to the panels and with pin height adjustable legs. TAG: Clerk 1 Clerk 2	2	

FURNITURE LEGEND				
NO.	ITEMS	DESCRIPTION	MODEL NO.	QTY REQ'D
23	TB-1	Spec Custom Boat Shaped Conference Table Complete with 1 plinth rectangular base which will look like one full drum with complete open cavity at centre, power access doors on both sides for a total of 4 access door points and custom cutouts for in-land power modules. Top is in 2 pieces. SIZE: 144" x 48" and 60" at deepest point EDGE: Flat PUF edge to be determined LAMINATE: High pressure to be determined	085965	1
24	TB-2	Spec Custom Rectangular Table Complete with arc ends, island drum base (2 drums put together to look like 1 and have power access doors on both side for a total of 4 access door points) and 3 plinth rectangular base. Top is in 2 pieces. SIZE: 120" x 48" EDGE: Flat PUF edge to be determined LAMINATE: To be determined	085965	1
25	TB-3	Spec 'Manhattan' Lunchroom Table Complete with flip top mechanism, locking casters, flat profile PUF edge and Manhattan style T-bases. SIZE: 48"W x 30"D BASE COLOUR: To be determined LAMINATE: To be determined	MNT3048 PVF/FLIP /CAST	12
26	TB-4	Steelcase 'Groupwork' CoffeeTable Complete with round laminate top and disc base. SIZE: 24"DIA x 16"H BASE COLOUR: To be determined LAMINATE: To be determined	TS4TLDR 24T/SAT COF22	1

DRAWN	CHECKED	DESIGNED	APPROVED
JKR			
DATE: 2015.06.17	USER APPROVAL		

THE CITY OF WINNIPEG  
PLANNING, PROPERTY AND  
DEVELOPMENT DEPARTMENT  
MUNICIPAL ACCOMMODATIONS DIVISION  
3-65 GARRY STREET, R3C 4K4

PROJECT  
TRAFFIC SIGNALS  
PUBLIC WORKS

821 ELGIN AVENUE  
SHEET TITLE  
MAIN & SECOND FLOOR PLANS