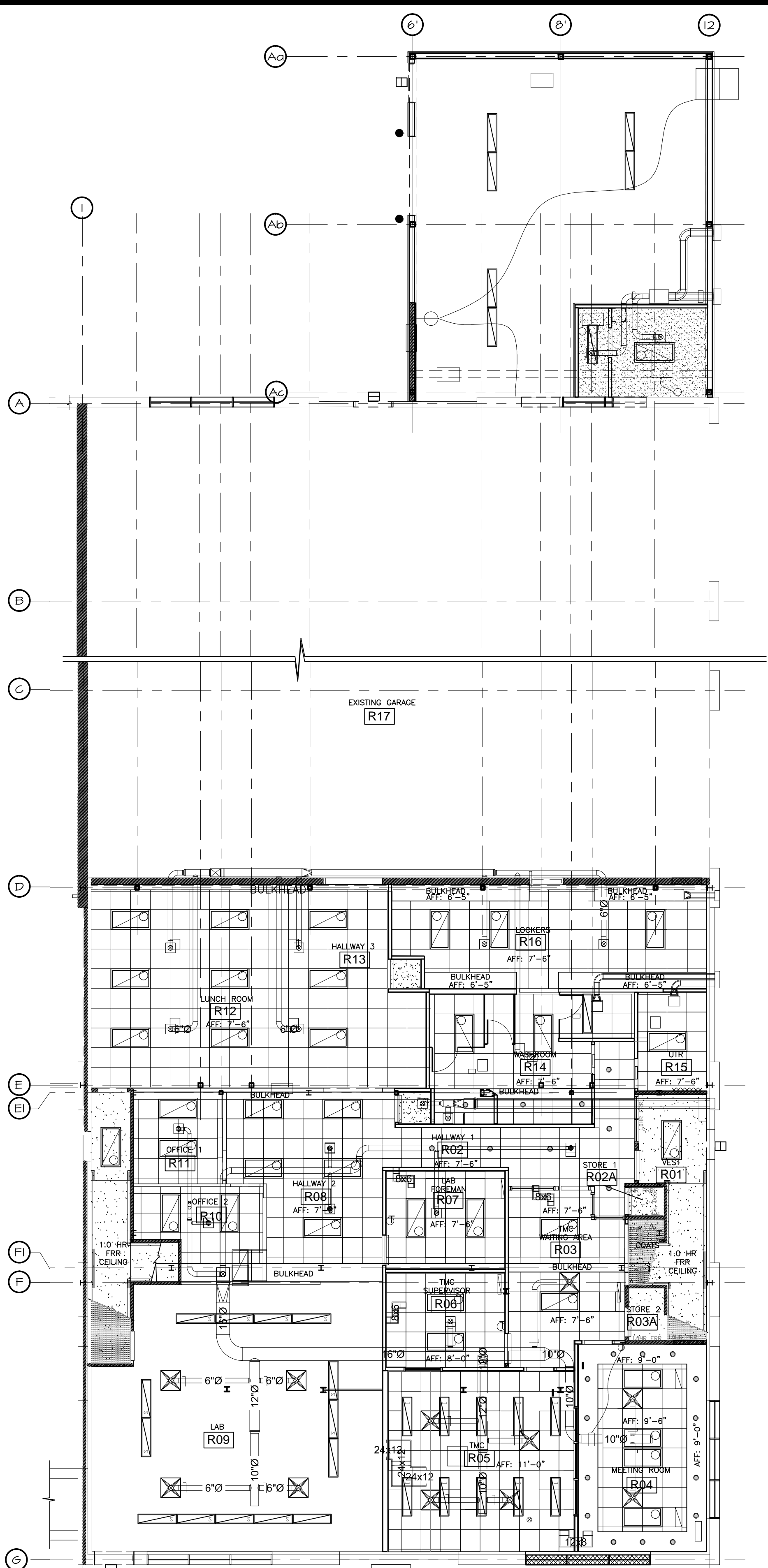
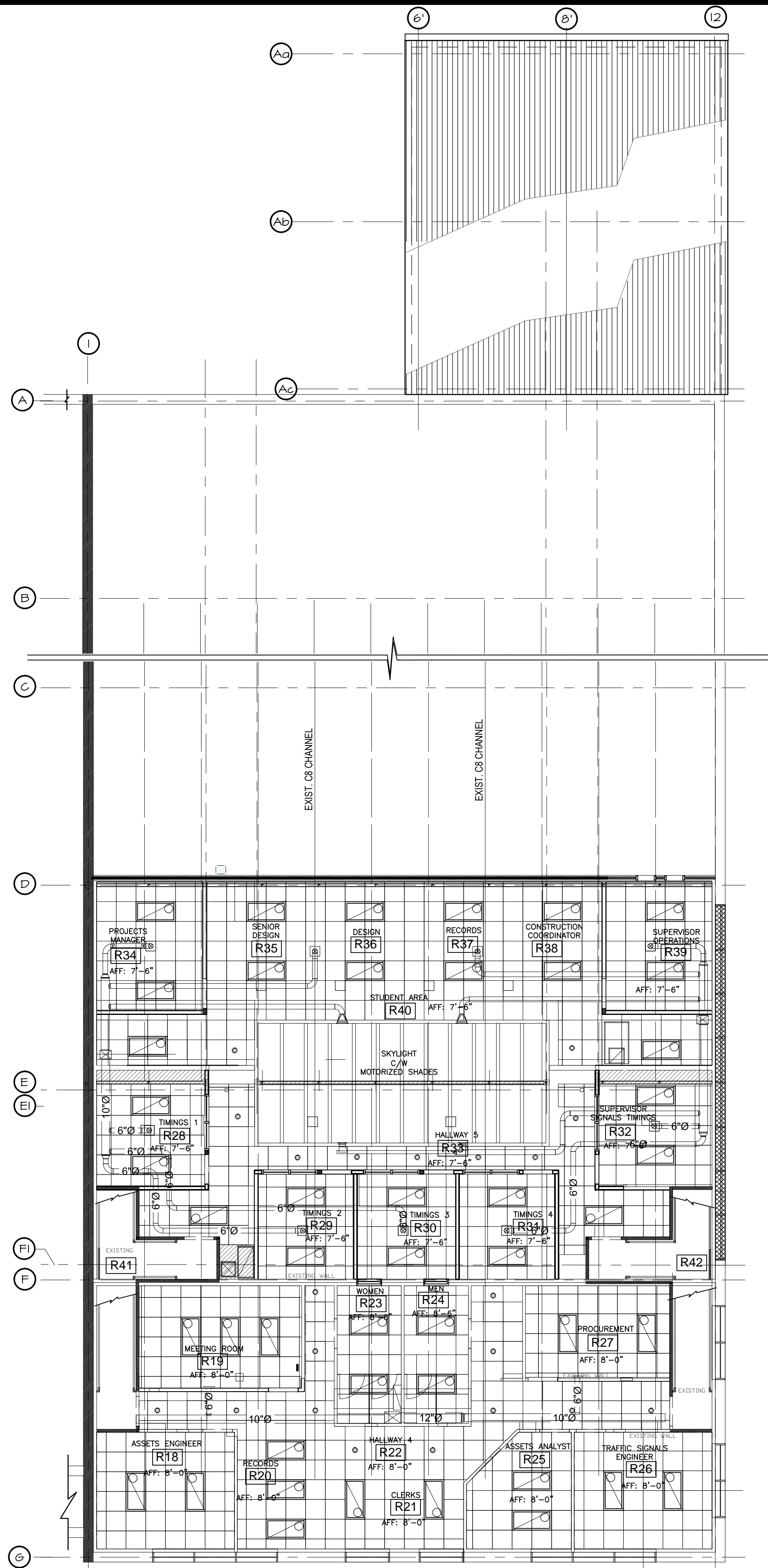


CEILING TYPES	
	2' x 2' ACT CEILING TILES
	5/8" TYPE 'X' GYPSUM BOARD
	NO CEILING UNDERSIDE PAINTED

LIGHT TYPES	
	POTLIGHT
	2' x 4' LOW PROFILE RECESSED LIGHT
	2' x 4' RECESSED LIGHT
	SUSPENDED TYPE LIGHT
	EXTERIOR WALL PACK
	1' x 4' WP LIGHT
	INDIRECT LIGHTING

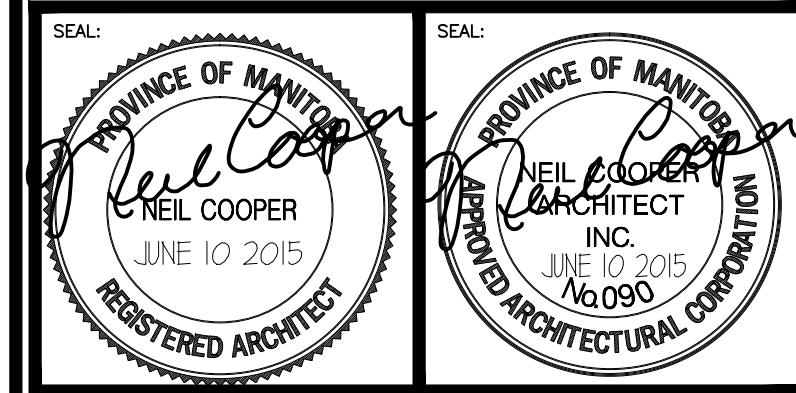


A REFLECTED CEILING PLAN MAIN FLOOR
 2.1A8.1 SCALE: 1/8" = 1'-0"



B REFLECTED CEILING PLAN SECOND FLOOR
 2.1A8.1 SCALE: 1/8" = 1'-0"

REV	DESCRIPTION	DATE	BY
01	ISSUED FOR TENDER	JUNE 10 2015	AR
00	ISSUED FOR CONSTRUCTION	JUNE 2 2015	AR



THIS DRAWING MUST NOT BE SCALED.
 THE GENERAL CONTRACTOR SHALL VERIFY ALL DIMENSIONS, DATUMS AND LEVELS PRIOR TO COMMENCEMENT OF WORK AND IS HELD RESPONSIBLE FOR REPORTING ANY DISCREPANCY OR OMISSION TO NEIL COOPER ARCHITECT INC. IMMEDIATELY.
 THIS DRAWING IS THE EXCLUSIVE PROPERTY OF NEIL COOPER ARCHITECT INC. AND CAN BE REPRODUCED ONLY WITH THE PERMISSION OF NEIL COOPER ARCHITECT INC. IN WHICH CASE THE REPRODUCTION MUST BEAR THEIR NAME AS THE ARCHITECTURAL FIRM.

REFLECTED CEILING PLANS

PROJECT:
TRANSPORTATION MANAGEMENT CENTRE RENOVATIONS
BID # 427-2015
 821 Elgin Ave., Winnipeg, Manitoba

Neil Cooper Architect Inc.
 10-395 Berry Street, Winnipeg, Manitoba R3J 1N6

DRAWN BY: AR	CHECKED BY: NC	SHEET NO: A6.1R1	REV NO:
DATE: DEC 3, 2014			
SCALE: AS NOTED			