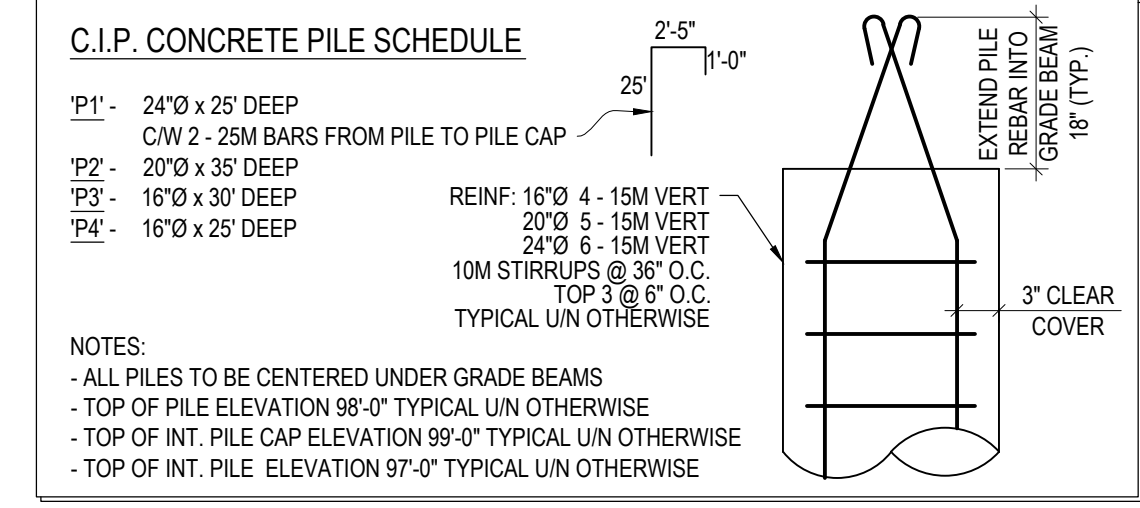


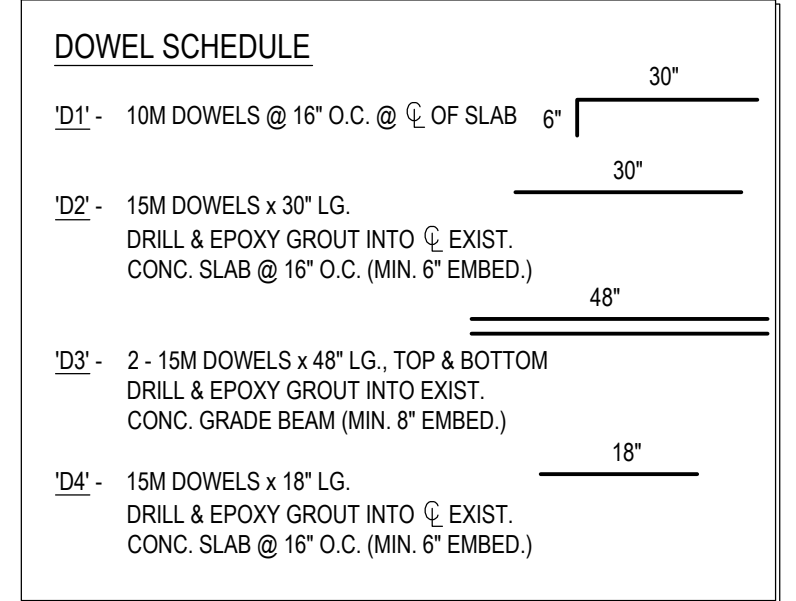
1 FOUNDATION PLAN
S2.1 SCALE: 1/8" = 1'-0"



- C.I.P. CONCRETE PILE SCHEDULE**
- P1 - 24"Ø x 25' DEEP
 CW 2 - 25M BARS FROM PILE TO PILE CAP
 - P2 - 20"Ø x 35' DEEP
 - P3 - 16"Ø x 30' DEEP
 - P4 - 16"Ø x 25' DEEP

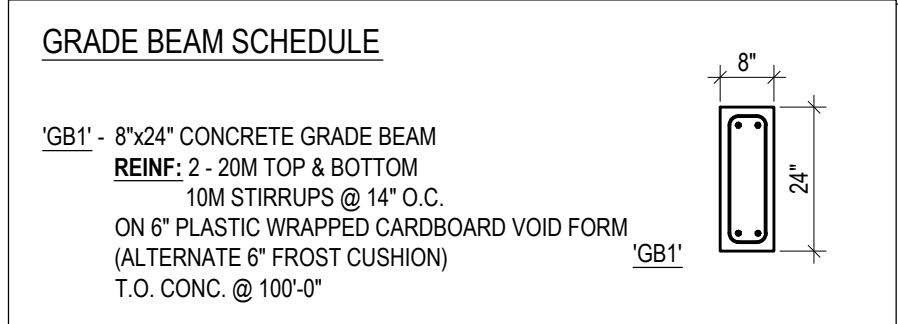
REINF: 16"Ø 4 - 15M VERT
 20"Ø 5 - 15M VERT
 24"Ø 6 - 15M VERT
 10M STIRRUPS @ 36" O.C.
 TOP 3 @ 8" O.C.
 TYPICAL UN OTHERWISE

NOTES:
 - ALL PILES TO BE CENTERED UNDER GRADE BEAMS
 - TOP OF PILE ELEVATION 98'-0" TYPICAL UN OTHERWISE
 - TOP OF INT. PILE CAP ELEVATION 99'-0" TYPICAL UN OTHERWISE
 - TOP OF INT. PILE ELEVATION 97'-0" TYPICAL UN OTHERWISE



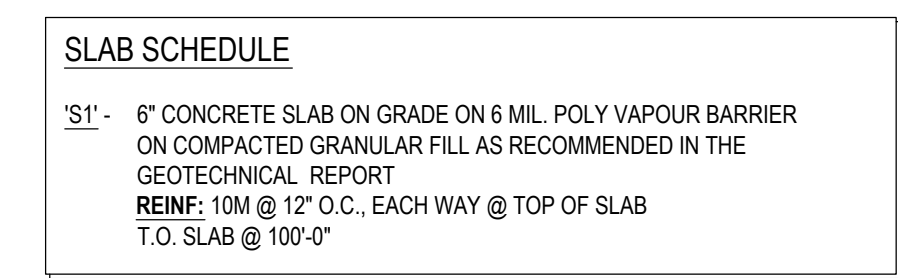
DOWEL SCHEDULE

- D1 - 10M DOWELS @ 16" O.C. @ C OF SLAB 6"
- D2 - 15M DOWELS x 30" LG
 DRILL & EPOXY GROUT INTO EXIST.
 CONC. SLAB @ 16" O.C. (MIN. 6" EMBED.)
- D3 - 2 - 15M DOWELS x 48" LG., TOP & BOTTOM
 DRILL & EPOXY GROUT INTO EXIST.
 CONC. GRADE BEAM (MIN. 8" EMBED.)
- D4 - 15M DOWELS x 18" LG.
 DRILL & EPOXY GROUT INTO EXIST.
 CONC. SLAB @ 16" O.C. (MIN. 6" EMBED.)



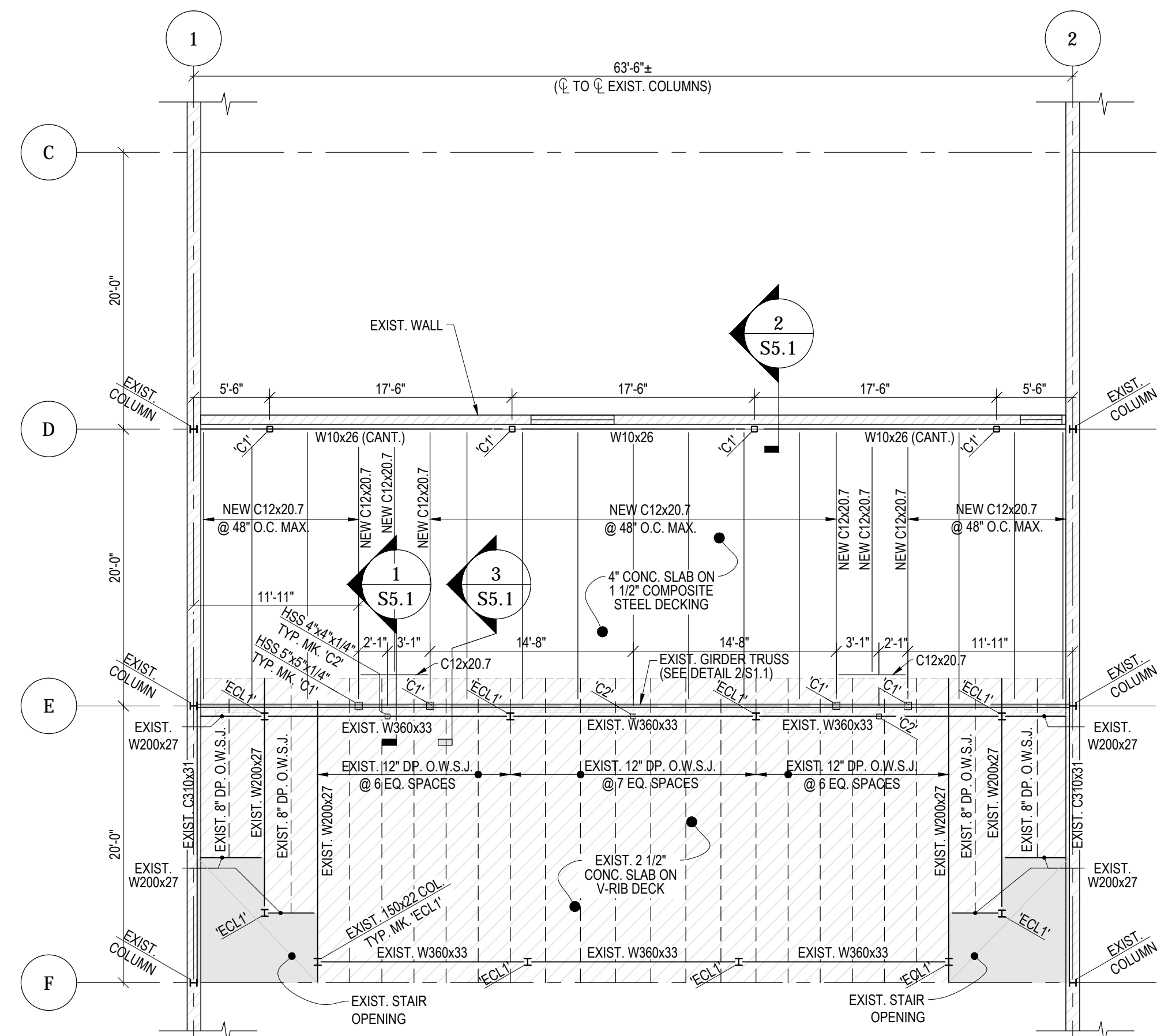
GRADE BEAM SCHEDULE

- GB1 - 8"x24" CONCRETE GRADE BEAM
 REINF: 2 - 20M TOP & BOTTOM
 10M STIRRUPS @ 14" O.C.
 ON 6" PLASTIC WRAPPED CARDBOARD VOID FORM
 (ALTERNATE 6" FROST CUSHION)
 T.O. CONC. @ 100'-0"



SLAB SCHEDULE

- S1 - 6" CONCRETE SLAB ON GRADE ON 6 MIL POLY VAPOUR BARRIER
 ON COMPACTED GRANULAR FILL AS RECOMMENDED IN THE
 GEOTECHNICAL REPORT
 REINF: 10M @ 12" O.C. EACH WAY @ TOP OF SLAB
 T.O. SLAB @ 100'-0"



2 SECOND FLOOR FRAMING PLAN
S2.1 SCALE: 1/8" = 1'-0"
 DESIGN LOADS:
 DESIGN LIVE LOAD = 50 PSF
 DESIGN DEAD LOAD = 80 PSF (INCLUDES PARTITIONS)



REV	DESCRIPTION	DATE	BY
5	ISSUED FOR TENDER	12 JUNE 2015	SAS
4	ISSUED FOR CONSTRUCTION	01 JUNE 2015	SAS
3	ISSUED FOR REVIEW	13 MAY 2015	SAS
2	ISSUED FOR PRICING	10 APR 2015	SAS
1	ISSUED FOR REVIEW	23 FEB 2015	SAS

SEAL	SEAL

THIS DRAWING MUST NOT BE SCALED.
 THE GENERAL CONTRACTOR SHALL VERIFY ALL DIMENSIONS, DATUMS AND LEVELS PRIOR TO COMMENCEMENT OF WORK AND IS HELD RESPONSIBLE FOR REPORTING ANY DISCREPANCY OR OMISSION TO NEIL COOPER ARCHITECT INC IMMEDIATELY.
 THIS DRAWING IS THE EXCLUSIVE PROPERTY OF NEIL COOPER ARCHITECT INC. AND CAN BE REPRODUCED ONLY WITH THE PERMISSION OF NEIL COOPER ARCHITECT INC. IN WHICH CASE THE REPRODUCTION MUST BEAR THEIR NAME AS THE ARCHITECTURAL FIRM.

FOUNDATION & SECOND FLOOR FRAMING PLANS
 PROJECT:
TRANSPORTATION MANAGEMENT CENTRE RENOVATIONS
 821 Elgin Ave., Winnipeg, Manitoba

Neil Cooper Architect Inc.
 10-395 Berry Street, Winnipeg, Manitoba R3J 1N6



DRAWN BY:	CHECKED BY:	SHEET NO.:	REV NO.:
SAS	RH		
DATE:	12 JUNE 2015	S2.15	
SCALE:	AS NOTED		
FILE:	15-086-CG-31		