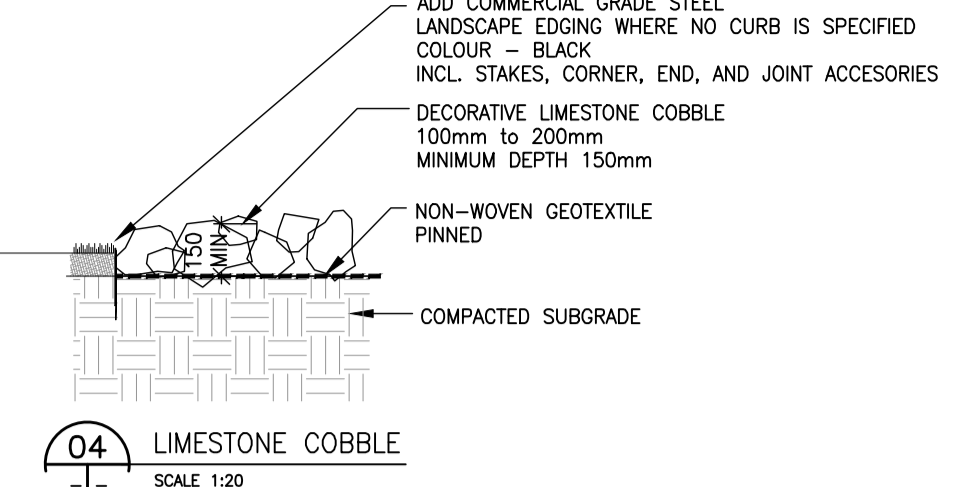
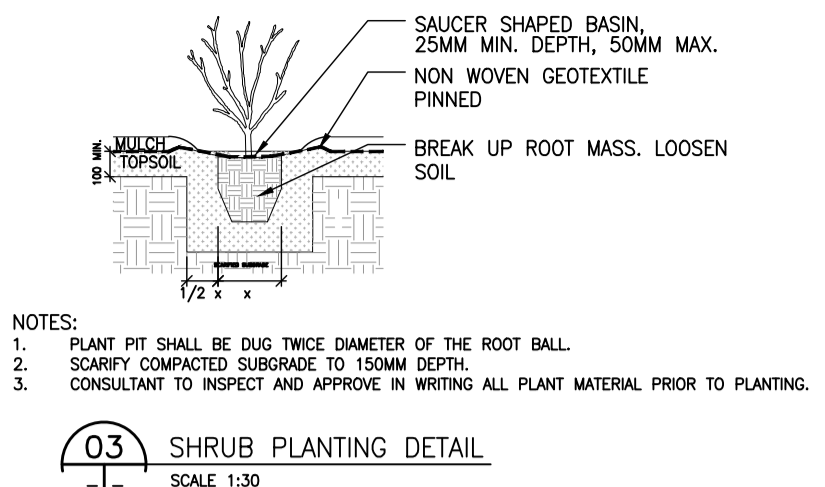
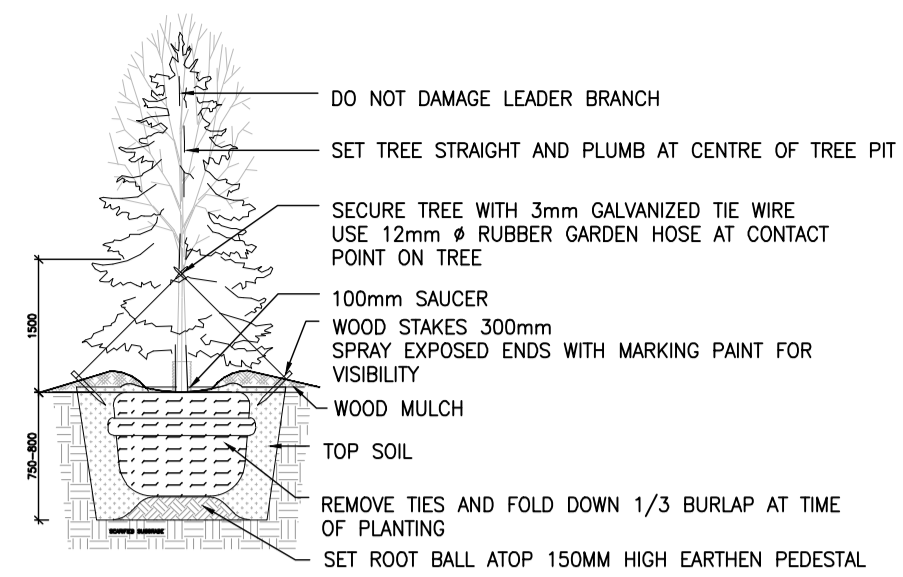


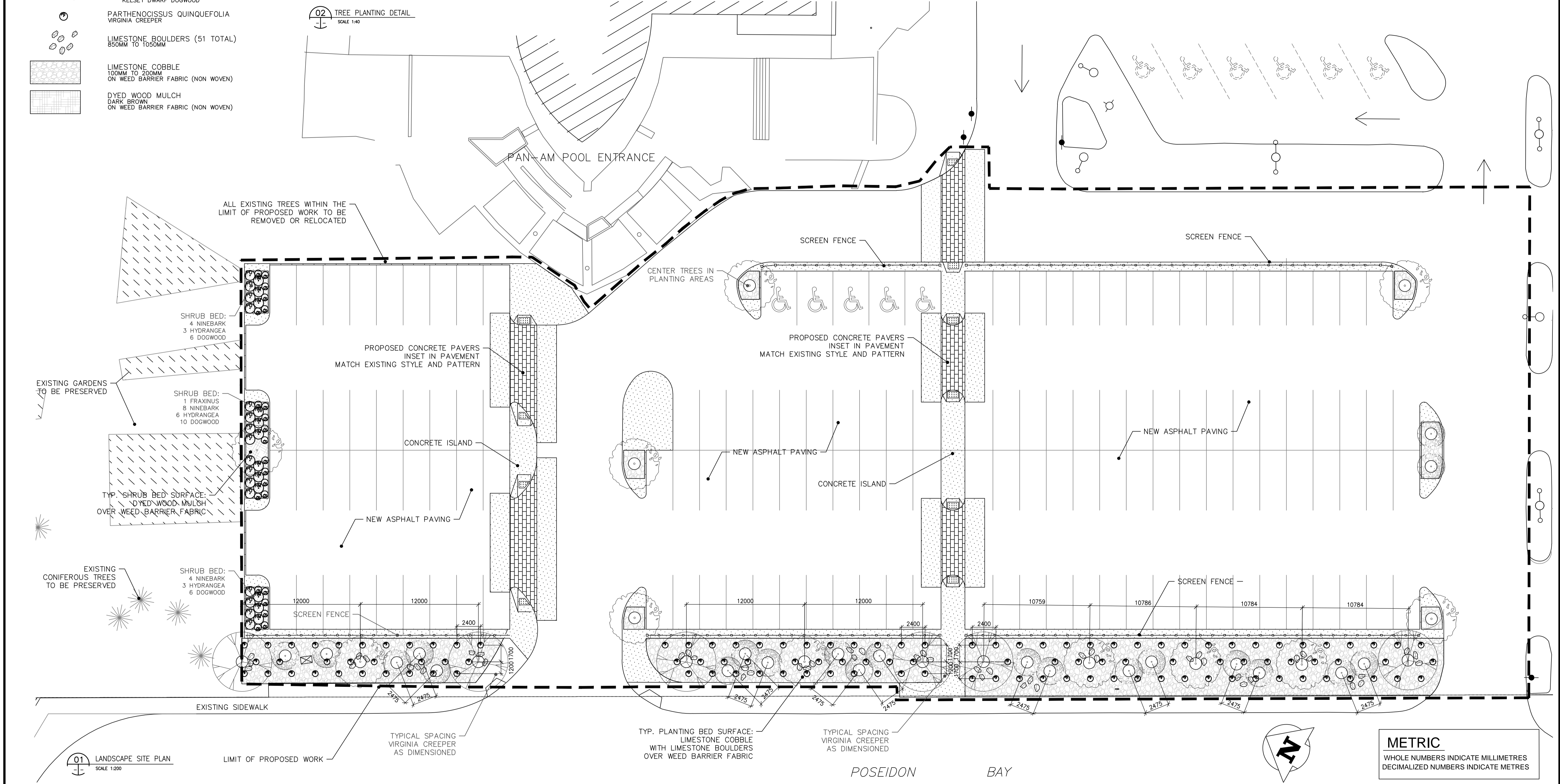
PLANTING LEGEND

- ACER SACCHARINUM
KENORA SILVER MAPLE
- FRAXINUS NIGRA
FALLGOLD BLACK ASH
- ACER TATARICUM
TATARIAN MAPLE
- PHYSOCARPUS OPULIFOLIUS
"CENTER GLOW" NINEBARK
- HYDRANDEA MACROPHYLLA
"ENDLESS SUMMER" HYDRANGEA
- CORNUS SERICEA "KELSEY"
KELSEY DWARF DOGWOOD
- PARTHENOCESSUS QUINQUEFOLIA
VIRGINIA CREEPER
- LIMESTONE BOULDERS (51 TOTAL)
850MM TO 1050MM
- LIMESTONE COBBLE
100MM TO 200MM
ON WEED BARRIER FABRIC (NON WOVEN)
- DYED WOOD MULCH
DARK BROWN
ON WEED BARRIER FABRIC (NON WOVEN)

PLANTING DETAILS



- NOTES:
1. REFER TO LANDSCAPE ARCHITECTURAL PLANTING PLAN FOR LOCATION OF TREES.
2. LANDSCAPE ARCHITECT TO INSPECT AND APPROVE IN WRITING ALL PLANT MATERIAL PRIOR TO PLANTING.
3. SCARIFY COMPACTED SUB-GRADE AT BASE OF TREE PIT TO A DEPTH OF 300MM.
4. DO NOT ALLOW TIE WIRE TO CONTACT STEM.



PLANTING NOTES

1. CONTRACTOR TO VERIFY ALL ELEVATIONS AND DIMENSIONS ON SITE PRIOR TO CONSTRUCTION. REPORT ANY DISCREPANCIES TO CONSULTANT PRIOR TO COMMENCING WORK.
2. ALL LANDSCAPE FILL SHALL BE FREE DRAINING AND FREE OF FOREIGN DEBRIS.
3. ALL PLANTING SOILS SHOULD BE SOURCED LOCALLY AND BE FREE OF WEEDS, FOREIGN SEED MATERIAL AND DEBRIS.
4. MINIMUM SOIL DEPTHS SHALL BE 300mm IN GROUNDCOVER PLANTING AREAS, 450mm IN SHRUB PLANTING AREAS.
5. CONTRACTOR SHALL STAKE LOCATIONS OF ALL PROPOSED TREES AND ALL PLANTING BEDS SHALL BE STAKED AND SPRAY PAINTED ON THE GROUND AND REVIEWED AND APPROVED BY CONSULTANT PRIOR TO CONSTRUCTION.
6. ALL SHRUB PLANTING BEDS SHALL BE COMPLETELY COVERED WITH 75mm OF SPECIFIED MULCH OVER NON-WOVEN LANDSCAPE FABRIC.
7. INSTALL, STAKE AND GUY SUPPORT ALL TREES AS PER DETAIL. INSTALL SHRUBS AS PER DETAIL.
8. ALL EXISTING TREES AND VEGETATION SHALL BE PROTECTED DURING CONSTRUCTION UNLESS OTHERWISE NOTED.
9. ALL WORK SHALL BE DONE IN ACCORDANCE WITH CITY OF WINNIPEG STANDARD CONSTRUCTION SPECIFICATIONS. CLEARING AND GRUBBING - CW3010; GEOTEXTILE FABRICS - CW3130; EARTHWORK AND GRADING - CW3170;

PLANTING SCHEDULE

PLANT NAME	QUANTITY	SIZE	NOTES
ACER SACCHARINUM "KENORA" / KENORA SILVER MAPLE	6	75mm GAL	
FRAXINUS NIGRA / BLACK ASH	11	60mm GAL	
ACER TATARICUM / TATARIAN MAPLE	21	50mm GAL	
PHYSOCARPUS OPULIFOLIUS "CENTER GLOW" NINEBARK	16	5 GAL POT	SHRUBS TO BE SOURCED IN MANITOBA. ALL SHRUBS SHALL HAVE FULL AND BALANCED BRANCHING AND WITHOUT DEFECT.
HYDRANDEA MACROPHYLLA "ENDLESS SUMMER" HYDRANGEA	12	5 GAL POT	
CORNUS SERICEA "KELSEY" / KELSEY DWARF DOGWOOD	22	2 GAL POT	
PARTHENOCESSUS QUINQUEFOLIA / VIRGINIA CREEPER	116	2 GAL POT	

SURFACE MATERIAL	QUANTITY	SPECIFICATION
COBBLE MULCH - LIMESTONE	575 sq. m	100mm TO 200mm DIA. ROUGH
WOOD MULCH - DYED	42 sq. m	ALL WOOD MATERIAL DARK BROWN, 100mm DEPTH
BOULDERS - LIMESTONE	51	850mm TO 1050mm DIA. ROUGH

LOCATION APPROVED UNDERGROUND STRUCTURES

SUPV. U/G STRUCTURES COMMITTEE DATE

NOTE:
LOCATION OF UNDERGROUND STRUCTURES AS SHOWN ARE BASED ON THE BEST INFORMATION AVAILABLE BUT NO GUARANTEE IS GIVEN THAT ALL EXISTING UTILITIES ARE SHOWN OR THAT THE GIVEN LOCATIONS ARE EXACT. CONFIRMATION OF EXISTENCE AND EXACT LOCATION OF ALL SERVICES MUST BE OBTAINED FROM THE INDIVIDUAL UTILITIES BEFORE PROCEEDING WITH CONSTRUCTION.

C.W.B.M. 52-012-233,701m
N.E. CORNER OF TAYLOR AVE. AND CAMBRIDGE ST., AT REAR OF NO. 680 CAMBRIDGE ST. FACING TAYLOR AVE., A TABLET IN S. SIDE OF SQUARE CONCRETE VENTILATOR FOR UNDERGROUND GARAGE.

NO.	REVISIONS	DATE	BY
0	ISSUED FOR TENDER	15/05/27	
-		YY/MM/DD	

WSP

1600 BUFFALO PLACE
WINNIPEG, MB, R3T 6B8
PHONE: 204-477-6650
FAX: 204-474-2864
WWW.WSPGROUP.COM

DESIGNED BY D.B. CHECKED BY D.B.
DRAWN BY D.B. APPROVED BY D.B.

HOR. SCALE: 1:200 (A1)
VERT. SCALE:

DATE: MAY 2015

ENGINEER'S SEAL

CONSULTANT DRAWING NO.
121-24877-L01

THE CITY OF WINNIPEG
PLANNING, PROPERTY & DEVELOPMENT

PAN AM INDOOR POOL
PARKING LOT REDEVELOPMENT
PHASE 1
SITE PLANTING PLAN

CITY DRAWING NO.
432-2015-L01

SHEET 7 OF 9

REV. L01

METRIC
WHOLE NUMBERS INDICATE MILLIMETRES
DECIMALIZED NUMBERS INDICATE METRES