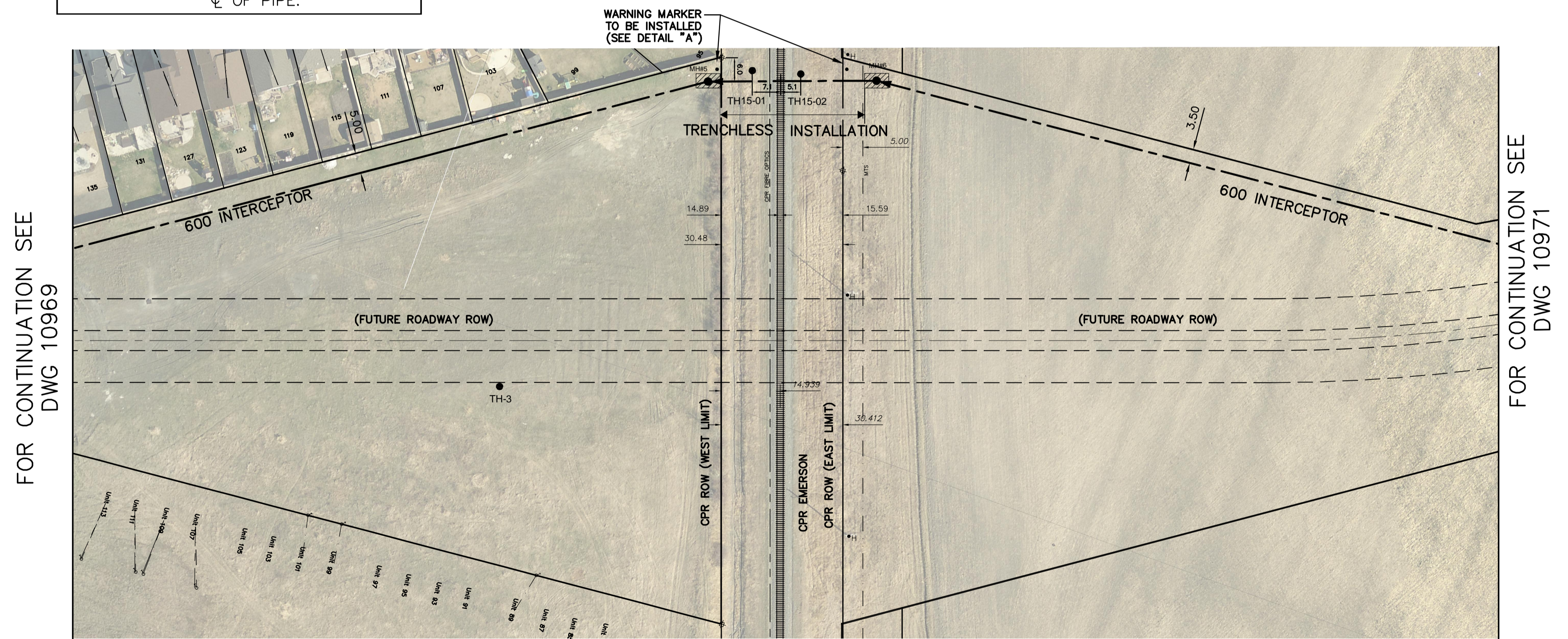


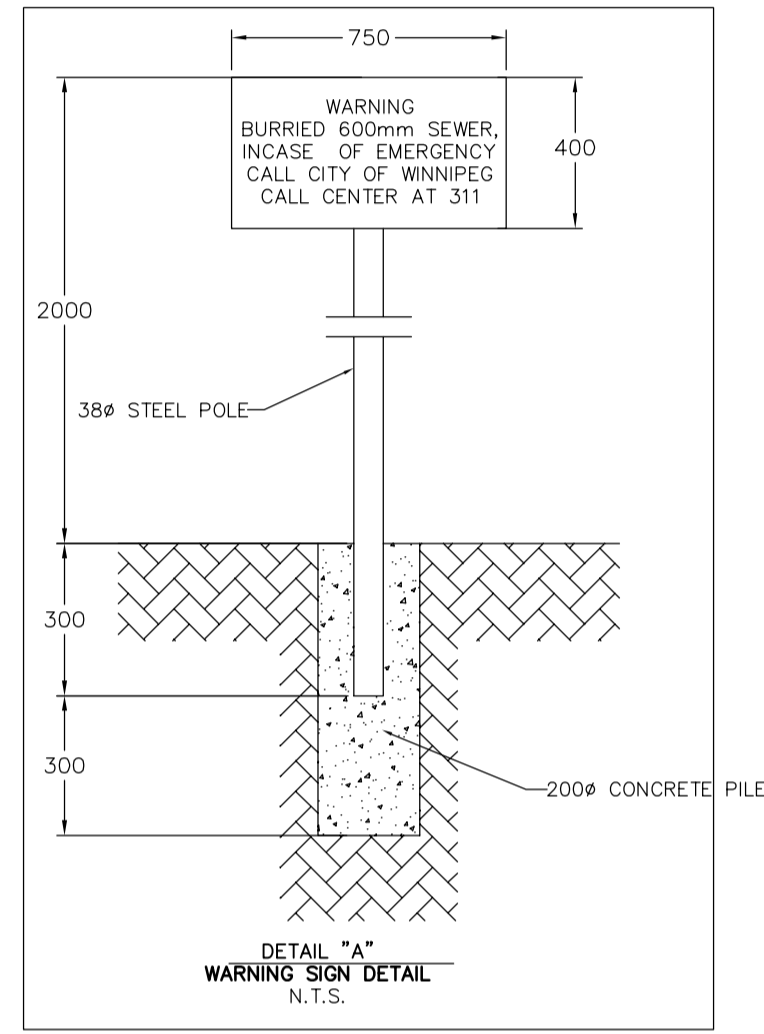
NOTE: CHAINAGES SHOWN ARE ALONG  
 ☉ OF PIPE.

WARDE AVE (PROPOSED)



FOR CONTINUATION SEE  
 DWG 10969

FOR CONTINUATION SEE  
 DWG 10971



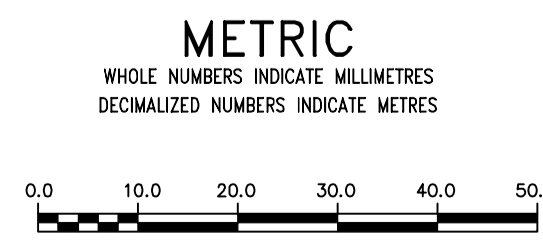
TEST HOLE COORDINATES:

TH15-01:	E-639063.810
	N-5520850.580
TH15-02:	E-639075.530
	N-5520584.260

RAIL CROSSING NOTES:

RAILWAY MILEAGE - 5.91 EMERSON SUBDIVISION  
 NOMINAL DIAMETER - 600mm  
 OUTSIDE DIAMETER (O.D.) - 800mm  
 WALL THICKNESS - 95mm  
 PIPE MATERIAL - REINFORCED CONCRETE  
 SPECIFICATION AND GRADE - ASTM C76 CLASS V  
 JOINT TYPE - RUBBER GASKET BELL AND SPIGOT  
 MATERIALS TO BE CONVEYED - SANITARY WASTEWATER  
 MAXIMUM WORKING PRESSURE - GRAVITY  
 DIRECTION OF FLOW - EAST TO WEST

- NOTES:
- CASING PIPE WILL BE JACK/BORED, AUGER HEAD COMPLETELY INSIDE PIPE WITH A MINIMUM OF 2 DIAMETER WIDTHS (TWO DIAMETER SOIL PLUG) FROM END OF PIPE. NO GROUND DISTURBANCE WITHIN CPR RIGHT OF WAY
  - CROSSING TO BE DESIGNED, CONSTRUCTED, MAINTAINED IN ACCORDANCE WITH TC-E10 AND CP SPEC. NO. SP-TS-2.39.
  - PIPE AND JOINTS TO WITHSTAND RAILWAY LOADING (COOPER E80 PLUS 50% IMPACT).



**WARNING**

IF POWER EQUIPMENT OR EXPLOSIVES ARE TO BE USED FOR EXCAVATION ON THIS PROJECT THE CONTRACTOR MUST:

- NOTIFY THE GAS COMPANY OF THE PROPOSED LOCATION OF EXCAVATION.
- TAKE PRECAUTION TO AVOID DAMAGE TO GAS COMPANY INSTALLATIONS.

SEE PROVINCIAL REGULATION 21072 FOR DETAILS

LOCATION APPROVED UNDERGROUND STRUCTURES

SUPV. U/G STRUCTURES COMMITTEE DATE

NOTE:  
 LOCATION OF UNDERGROUND STRUCTURES AS SHOWN ARE BASED ON THE BEST INFORMATION AVAILABLE BUT NO GUARANTEE IS GIVEN THAT ALL EXISTING UTILITIES ARE SHOWN OR THAT THE GIVEN LOCATIONS ARE EXACT. CONFIRMATION OF EXISTENCE AND EXACT LOCATION OF ALL SERVICES MUST BE OBTAINED FROM THE INDIVIDUAL UTILITIES BEFORE PROCEEDING WITH CONSTRUCTION.

B.M. ELEV.	DESIGNED BY	CHECKED BY
	DB	KZ
	RS	KZ
	SCALE:	RELEASED FOR CONSTRUCTION
	HORIZONTAL 1:750	DATE
	VERTICAL 1:50	DATE
	DATE 2015 05 12	
	PLLOT DATE: 2015 05 12	

DESIGNED BY	DB	CHECKED BY	KZ
DRAWN BY	RS	APPROVED BY	KZ
SCALE:	HORIZONTAL 1:750	RELEASED FOR CONSTRUCTION	DATE
	VERTICAL 1:50	DATE	
	DATE 2015 05 12		
	PLLOT DATE: 2015 05 12		

ENGINEER'S SEAL

ORIGINAL SIGNED BY K.R. ZUREK 15/05/12

CONSULTANT DRAWING NUMBER

**THE CITY OF WINNIPEG**  
 WATER AND WASTE DEPARTMENT  
 ENGINEERING DIVISION

2015 SEWER WORKS  
 CONTRACT NO. 3  
**WARDE AVENUE INTERCEPTOR**  
 164 E OF E R SOUTHSIDE DRIVE  
 195 E OF W R OF CPR ROW

SHEET 4 OF 5  
 CITY DRAWING NUMBER 10970