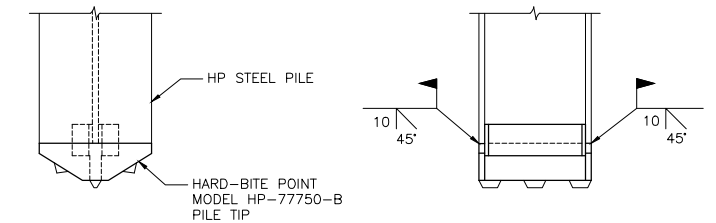
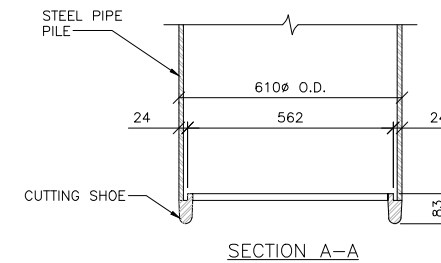
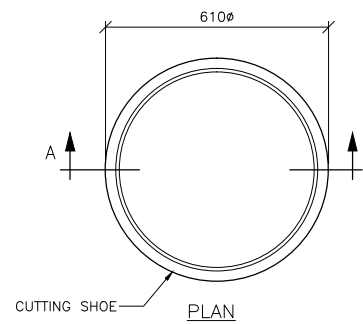
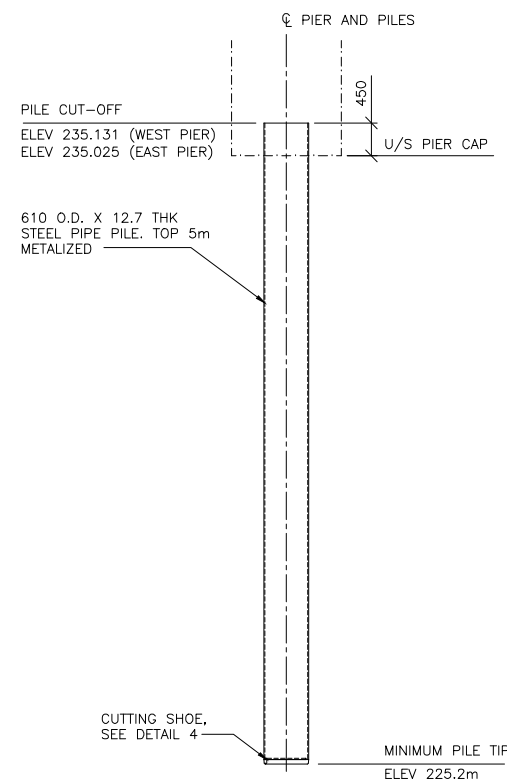
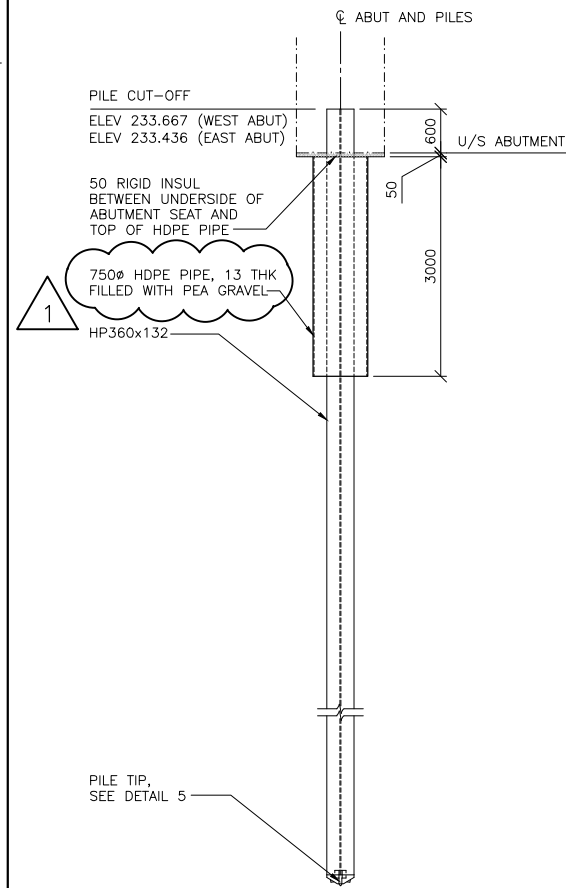


- GENERAL NOTES:**
1. SPACING OF PILES, FOR ALL FOOTINGS AS SHOWN, IS AT THE BOTTOM OF FOOTINGS.
 2. H-PILES ARE TO BE DRIVEN TO PRACTICAL REFUSAL IN BEDROCK. PIPE PILES ARE TO BE DRIVEN TO PRACTICAL REFUSAL, 0.5m INTO THE BEDROCK AND TO A MINIMUM TIP ELEVATION OF 225.2m.
 3. PRIOR TO INFILLING THE PIPE PILES WITH CONCRETE, REMOVE ALL LOOSE SOIL AND/OR BEDROCK IN THE PILE ABOVE THE PILE TIP.
 4. REFER TO SHEETS 6 TO 10 FOR GEOTECHNICAL INFORMATION.
 5. REFER TO SHEET 22 FOR PIPE PILES REINFORCING DETAILS.



PIPE PILE NOTES:

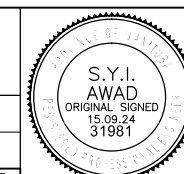
1. CUTTING SHOE SHALL BE INSIDE FLANGE TYPE WITH THE EXTERIOR FACE OF THE CUTTING SHOE FLUSH WITH STEEL PIPE PILE EXTERIOR FACE.
2. SLIP SHOE SHALL BE ATTACHED WITH A MINIMUM 8mm FILLET WELD AT THE TOP OF THE FLANGE. WELD ALL AROUND WITH A 70xx SERIES ROD.

WELDING NOTES:

1. LOW HYDROGEN E480 SERIES ELECTRODES SHALL BE USED.
2. THE MINIMUM ROOT PASS SHALL BE 6mm.
3. BEFORE UNDERTAKING THE BACK WELDS, THE WELD PREPARATION SHALL BE CARRIED OUT WITH A CARBON ARC-AIR GOUGER.



B.M. ELEV.					
DESIGNED BY	D.M.	CHECKED BY	S.A.		
DRAWN BY	G.I.	APPROVED BY	E.F.S.		
1	ISSUED FOR ADDENDUM 1	15.10.08	D.M.		
0	ISSUED FOR TENDER	15.09.24	S.A.		
NO. REVISIONS	DATE	BY	DATE	15.09.24	D.N. BURMEY, P.ENG. BRIDGE PROJECTS ENGINEER



THE CITY OF WINNIPEG
PUBLIC WORKS DEPARTMENT
ENGINEERING DIVISION

NESS AVENUE AT STURGEON CREEK
BRIDGE CONSTRUCTION

CITY DRAWING NUMBER
B243-15-015
SHEET 15 OF 64

CONSULTANT DRAWING NO.
1400070800-DWG-S0015

PILING LAYOUT AND DETAILS

15