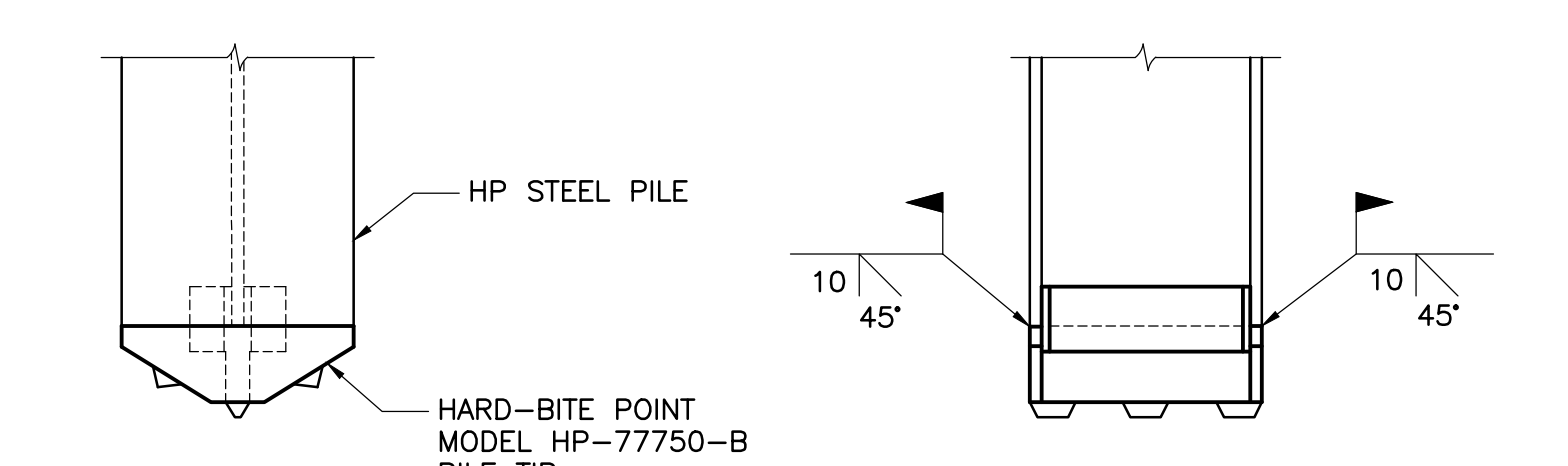
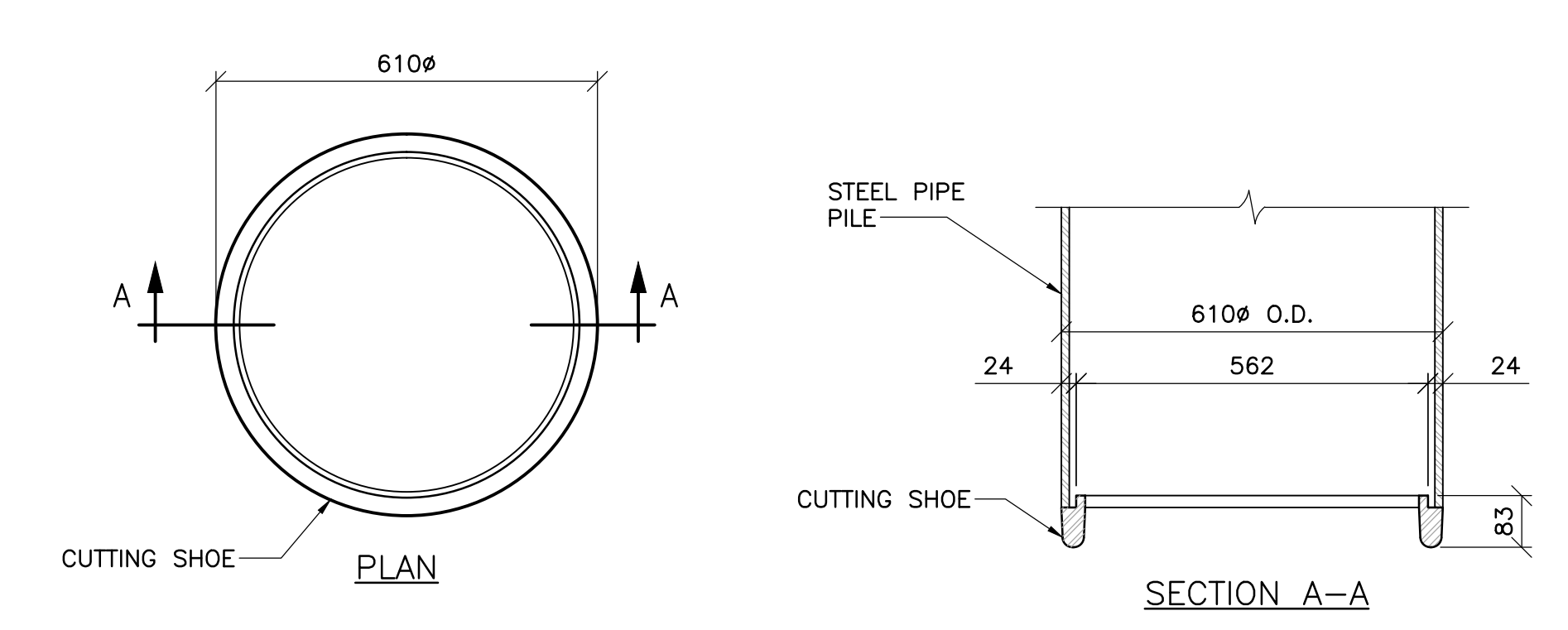
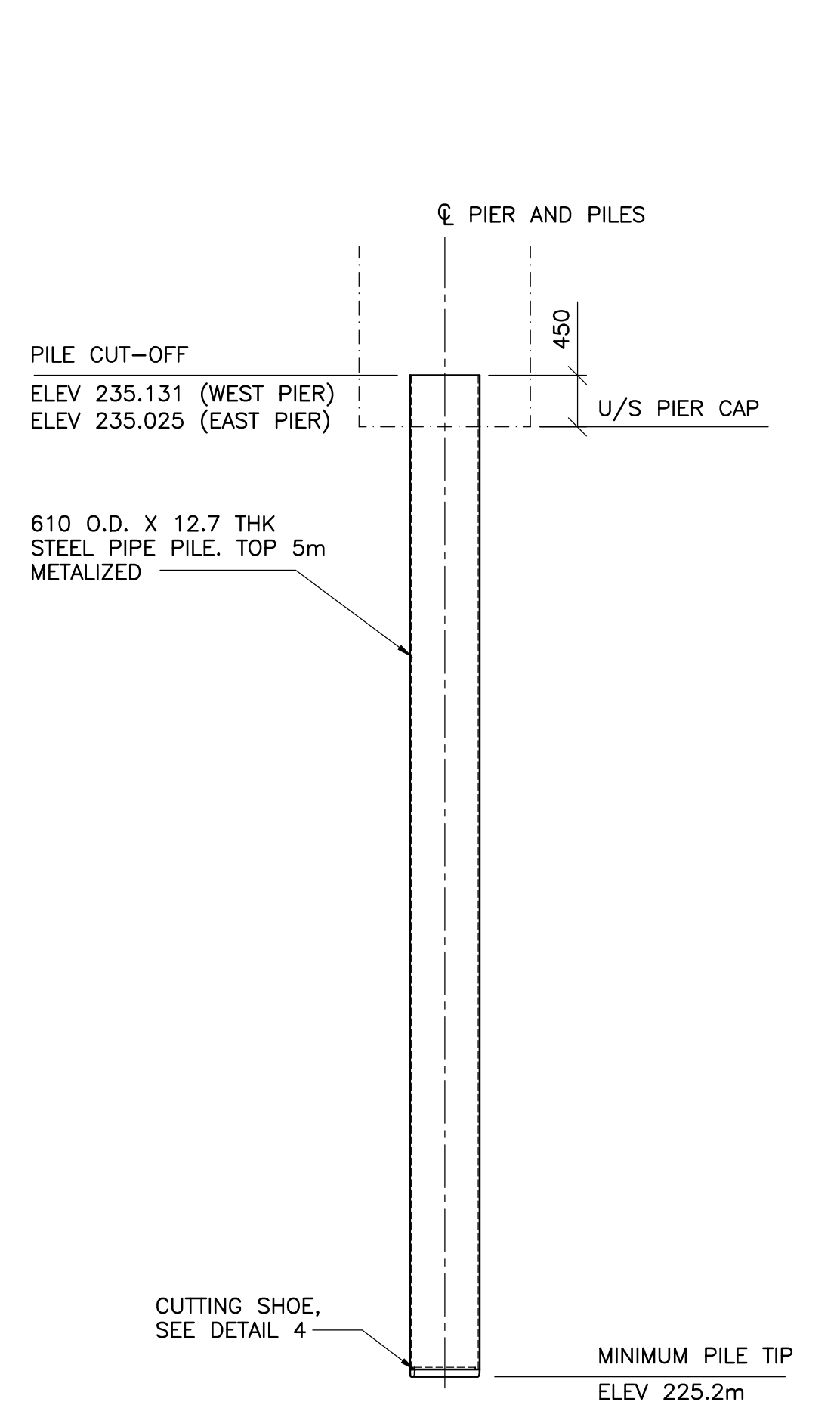
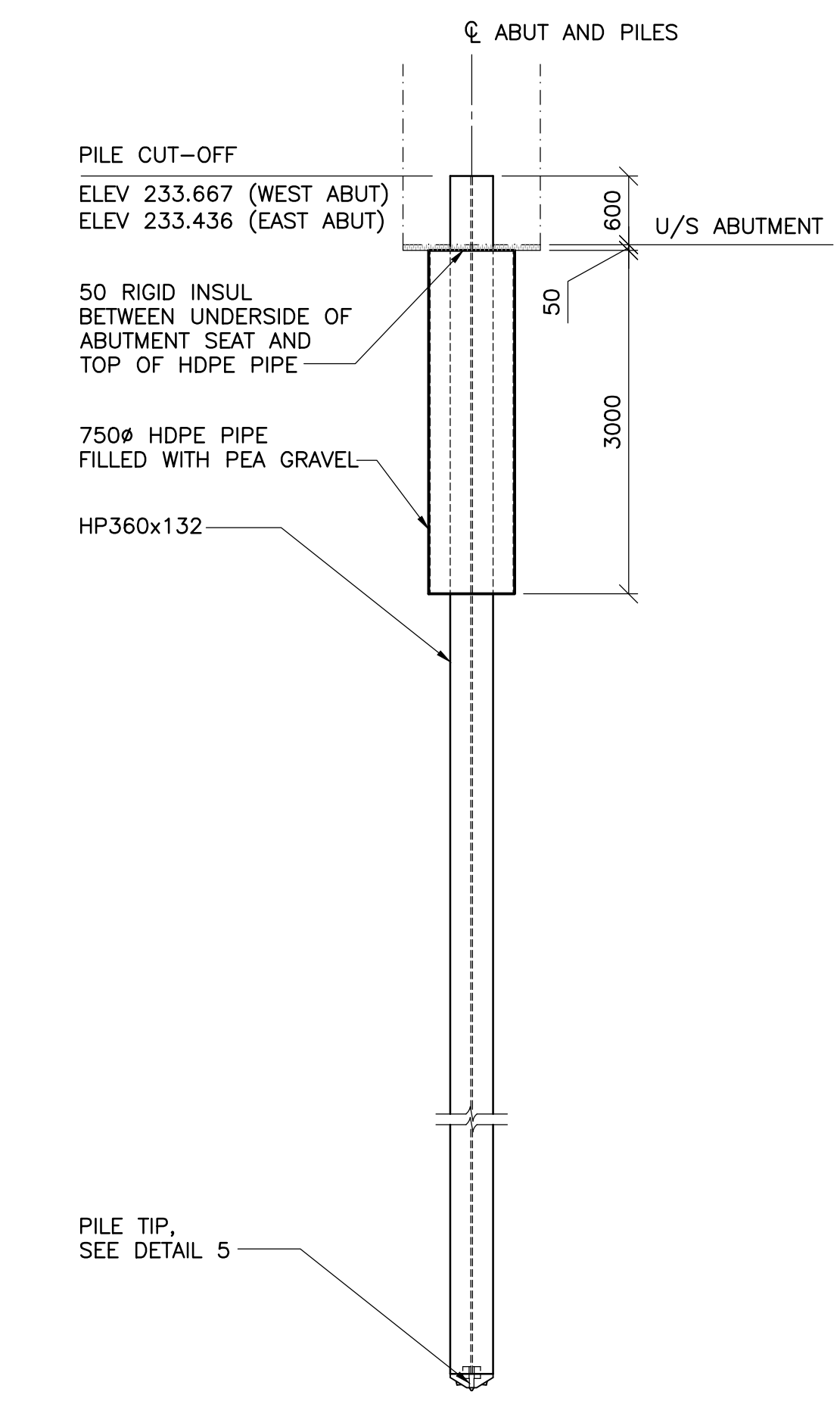


- GENERAL NOTES:**
1. SPACING OF PILES, FOR ALL FOOTINGS AS SHOWN, IS AT THE BOTTOM OF FOOTINGS.
 2. H-PILES ARE TO BE DRIVEN TO PRACTICAL REFUSAL IN BEDROCK. PIPE PILES ARE TO BE DRIVEN TO PRACTICAL REFUSAL, 0.5m INTO THE BEDROCK AND TO A MINIMUM TIP ELEVATION OF 225.2m.
 3. PRIOR TO INFILLING THE PIPE PILES WITH CONCRETE, REMOVE ALL LOOSE SOIL AND/OR BEDROCK IN THE PILE ABOVE THE PILE TIP.
 4. REFER TO SHEETS 6 TO 10 FOR GEOTECHNICAL INFORMATION.
 5. REFER TO SHEET 22 FOR PIPE PILES REINFORCING DETAILS.



4 PIPE PILE CUTTING SHOE DETAIL
1 : 10

5 STEEL HP PILE TIP DETAIL
1 : 10

- PIPE PILE NOTES:**
1. CUTTING SHOE SHALL BE INSIDE FLANGE TYPE WITH THE EXTERIOR FACE OF THE CUTTING SHOE FLUSH WITH STEEL PIPE PILE EXTERIOR FACE.
 2. SLIP SHOE SHALL BE ATTACHED WITH A MINIMUM 8mm FILLET WELD AT THE TOP OF THE FLANGE. WELD ALL AROUND WITH A 70xx SERIES ROD.

- WELDING NOTES:**
1. LOW HYDROGEN E480 SERIES ELECTRODES SHALL BE USED.
 2. THE MINIMUM ROOT PASS SHALL BE 6mm.
 3. BEFORE UNDERTAKING THE BACK WELDS, THE WELD PREPARATION SHALL BE CARRIED OUT WITH A CARBON ARC-AIR GOUGER.

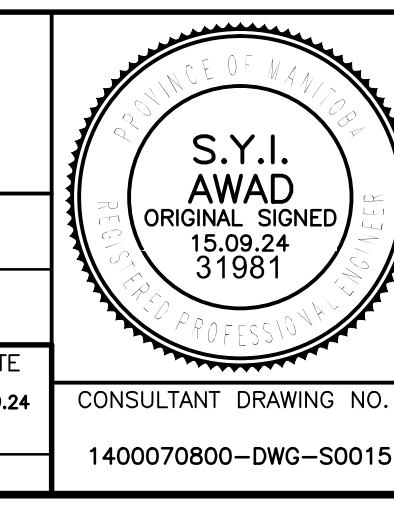
2 SECTION AT ABUTMENT
1 : 50

3 SECTION AT PIER
1 : 50



NO.	REVISIONS	DATE	BY
0	ISSUED FOR TENDER	15.09.24	S.A.

TETRA TECH	
DESIGNED BY D.M.	CHECKED BY S.A.
DRAWN BY G.I.	APPROVED BY E.F.S.
HOR. SCALE: AS NOTED	ACCEPTED BY DATE
VERTICAL: AS NOTED	ORIGINAL DRAWING SIGNED BY: D.N. BURMEY, P.ENG. 15.09.24
D.N. BURMEY, P.ENG. BRIDGE PROJECTS ENGINEER	



THE CITY OF WINNIPEG
PUBLIC WORKS DEPARTMENT
ENGINEERING DIVISION

NESS AVENUE AT STURGEON CREEK
BRIDGE CONSTRUCTION

PILING LAYOUT AND DETAILS

CITY DRAWING NUMBER
B243-15-015
SHEET 15 OF 64

CONSULTANT DRAWING NO.
1400070800-DWG-S0015

15