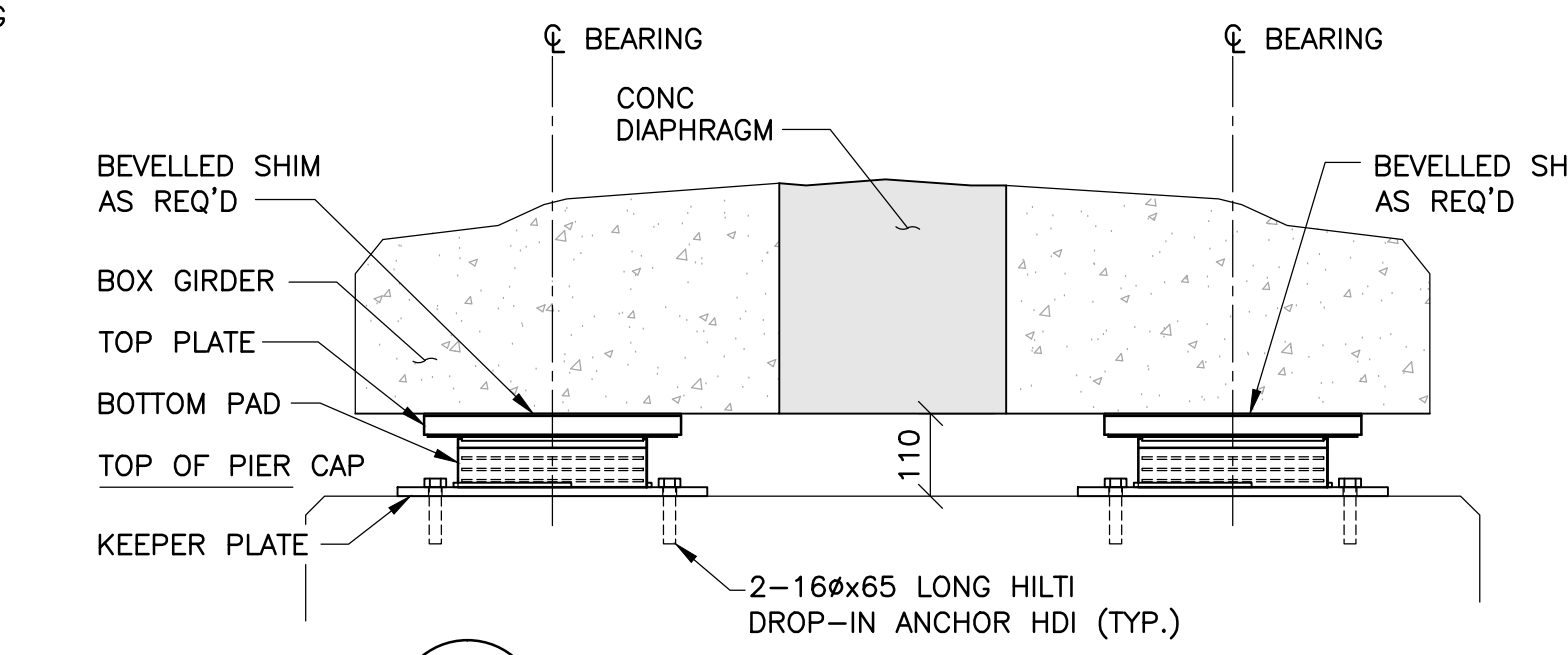
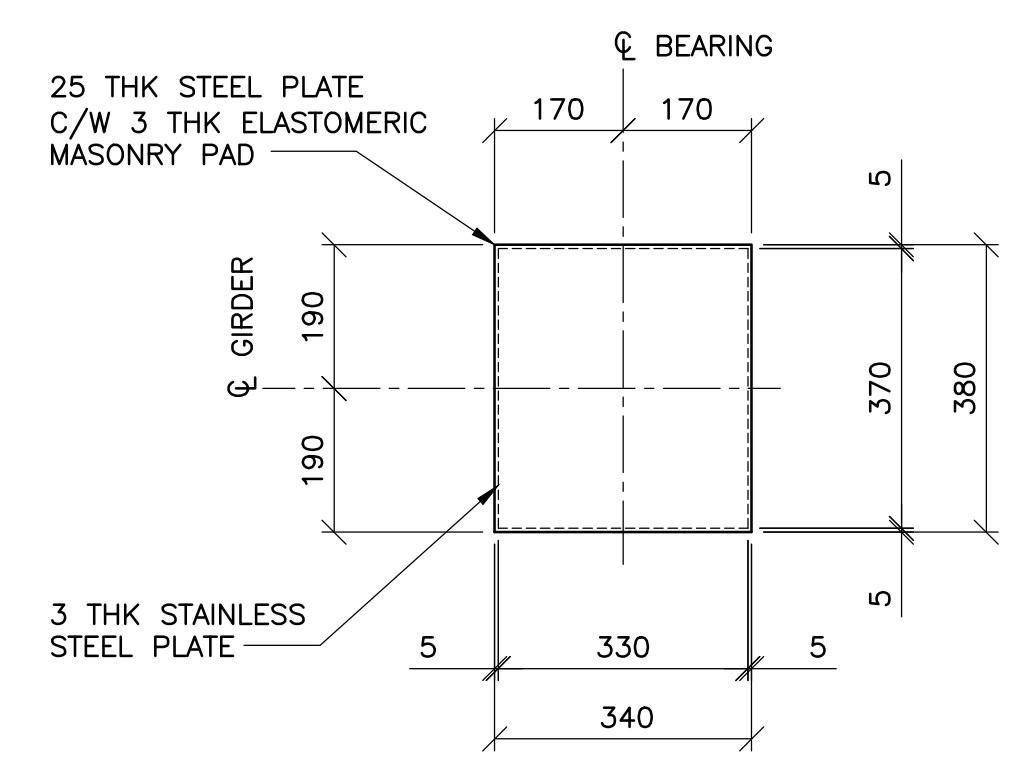


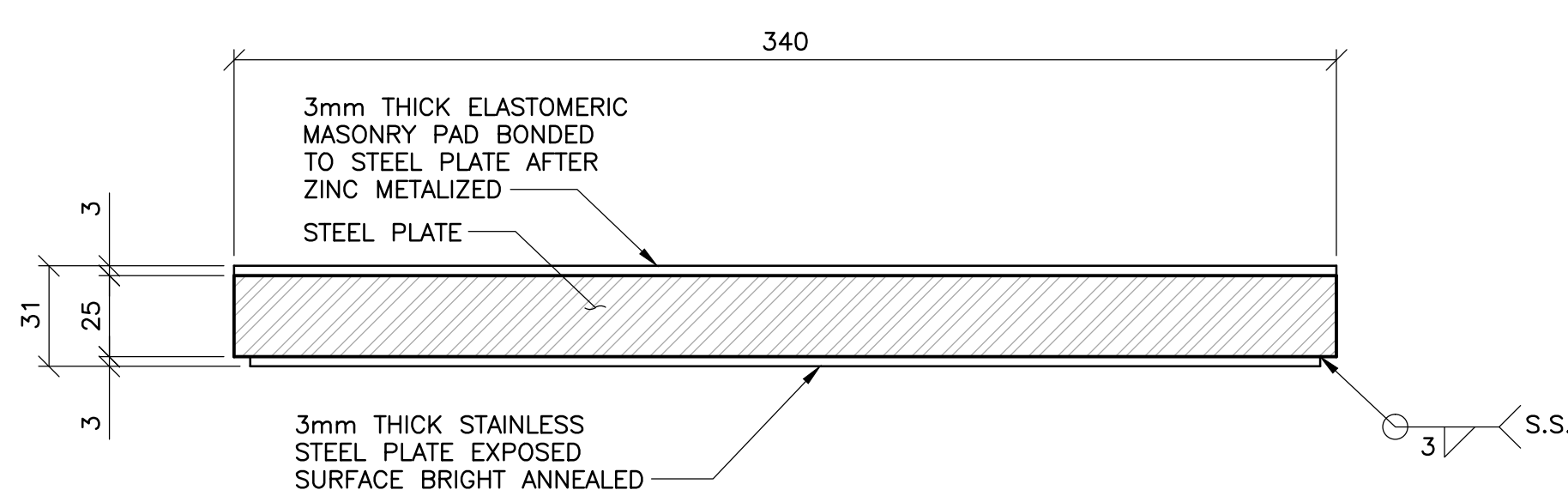
**2 SECTION AT ABUTMENT**  
1 : 20



**3 PIER BEARING ASSEMBLY DETAIL**  
1 : 10  
- REFER TO BEARING LAYOUT FOR LOC'S

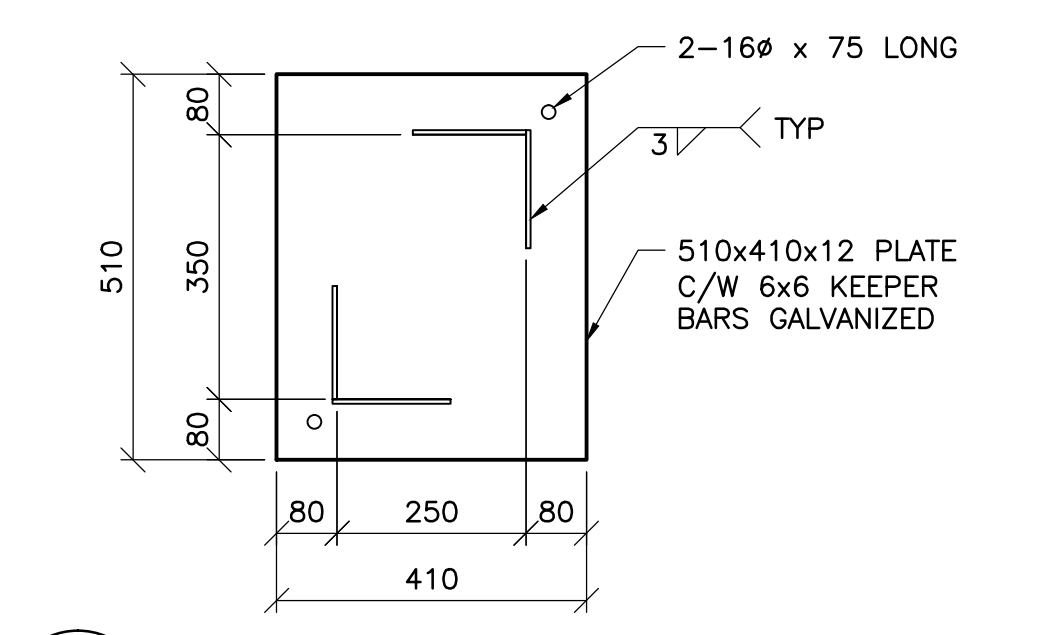


**4 TOP PLATE - PLAN**  
1 : 10

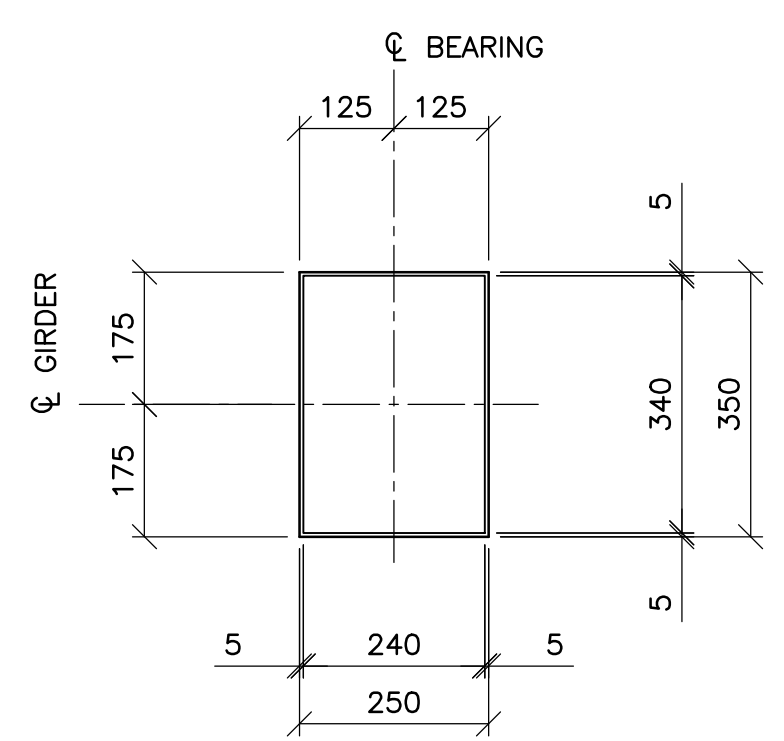


**5 TOP PLATE - SECTION**  
1 : 2

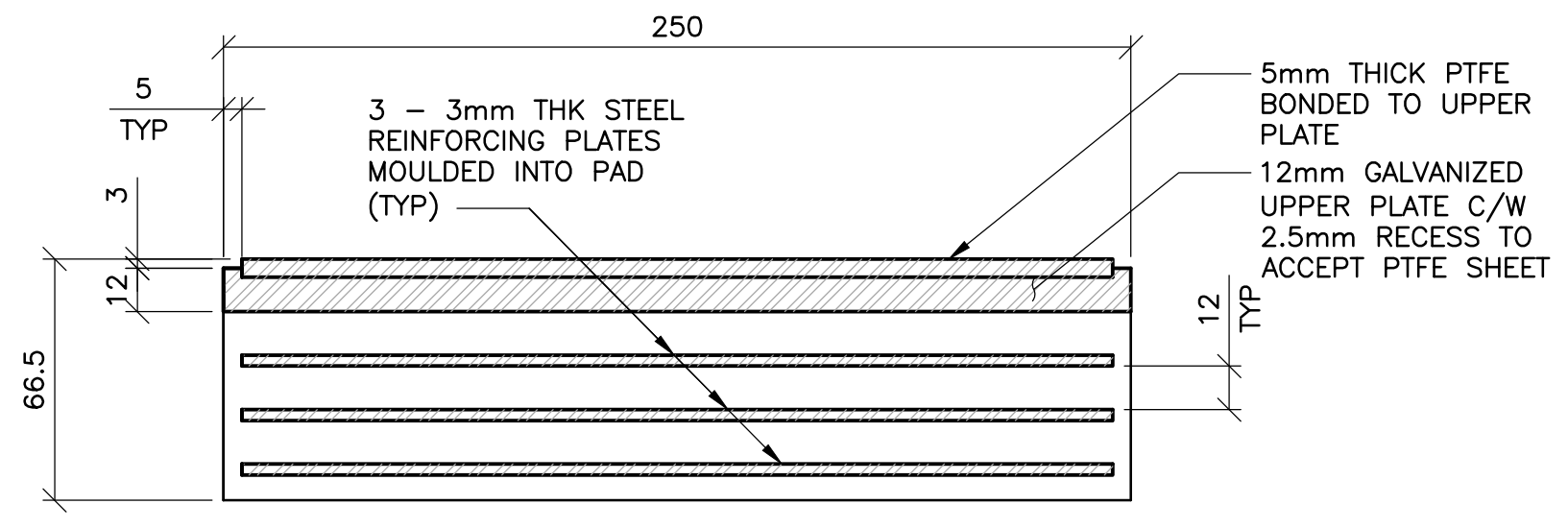
BEARING LOADS					
LOCATION	LIMIT STATE	VERTICAL DEAD (kN)	VERTICAL LIVE (kN)	HORIZONTAL LONGITUDINAL (kN)	HORIZONTAL TRANSVERSE (kN)
WEST ABUTMENT	SLS	180	325	25	10
	ULS	220	565	50	15
WEST PIER (WEST)	SLS	200	265	40	25
	ULS	245	465	95	25
WEST PIER (EAST)	SLS	200	265	40	25
	ULS	245	465	95	25
EAST PIER (WEST)	SLS	200	265	40	25
	ULS	245	465	95	25
EAST PIER (EAST)	SLS	200	265	40	25
	ULS	245	465	95	25
EAST ABUTMENT	SLS	180	325	25	10
	ULS	220	565	50	15



**8 KEEPER PLATE DETAIL**  
1 : 10



**6 BOTTOM PAD - PLAN**  
1 : 10



**7 BOTTOM PAD - SECTION**  
1 : 2

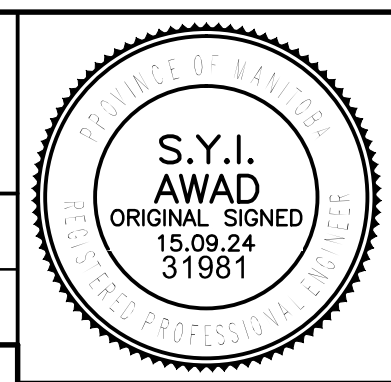
BEARING SETTING TABLE									
TEMPERATURE (°C)	-35	-25	-15	-5	0	5	15	25	35
"X" DISPLACEMENT AT PIERS (mm)	-10	-7	-4	-1	0	1	4	7	10

**NOTES:**

- ALL STEEL U.N.O. SHALL CONFORM TO CSA G40.21 GRADE 300W (MINIMUM).
- THE TOP PLATE SHALL BE ZINC METALIZED. SURFACES TO BE METALIZED SHALL BE CLEANED IN ACCORDANCE WITH SSPC-SP5, "WHITE METAL BLAST CLEANING" ELASTOMER SHALL BE NATURAL RUBBER.
- STEEL REINFORCED ELASTOMERIC BEARING PAD FOR PIERS SHALL BE LOW TEMPERATURE GRADE 4 OR 5 WITH A MAXIMUM SHEAR MODULUS  $G = 1.2MPa$  AND A 60 DUROMETER SHORE "A" HARDNESS. ELASTOMER FOR ABUTMENT SHALL BE 50 DUROMETER SHORE "A" HARDNESS.
- INTERNAL STEEL REINFORCING PLATES FOR LAMINATED BEARINGS SHALL BE ROLLED MILD STEEL WITH A MINIMUM YIELD STRENGTH OF 230 MPa AS APPROVED BY ENGINEER. UPPER PLATE TO BE GALVANIZED.
- ADJUSTMENTS FOR TEMPERATURE SHALL BE IN ACCORDING WITH THE BEARING SETTING CHART. "X" IS THE OFFSET DISTANCE BETWEEN CENTER OF BEARING PAD AND CENTER OF TOP PLATE.



B.M. ELEV.									
DESIGNED BY	D.M.	CHECKED BY	S.A.						
DRAWN BY	G.I.	APPROVED BY	E.F.S.						
HOR. SCALE:	AS NOTED		ACCEPTED BY	DATE					
VERTICAL:	AS NOTED		ORIGINAL DRAWING SIGNED BY:	D.N. BURMEY, P.ENG.	DATE	15.09.24			
0 ISSUED FOR TENDER	15.09.24	S.A.							
NO. REVISIONS	DATE	BY	DATE	15.09.24					



**THE CITY OF WINNIPEG**  
PUBLIC WORKS DEPARTMENT  
ENGINEERING DIVISION

NESS AVENUE AT STURGEON CREEK  
BRIDGE CONSTRUCTION

CITY DRAWING NUMBER  
B243-15-030  
SHEET 30 OF 64

BEARING LAYOUT AND DETAILS

CONSULTANT DRAWING NO.  
1400070800-DWG-S0030

30