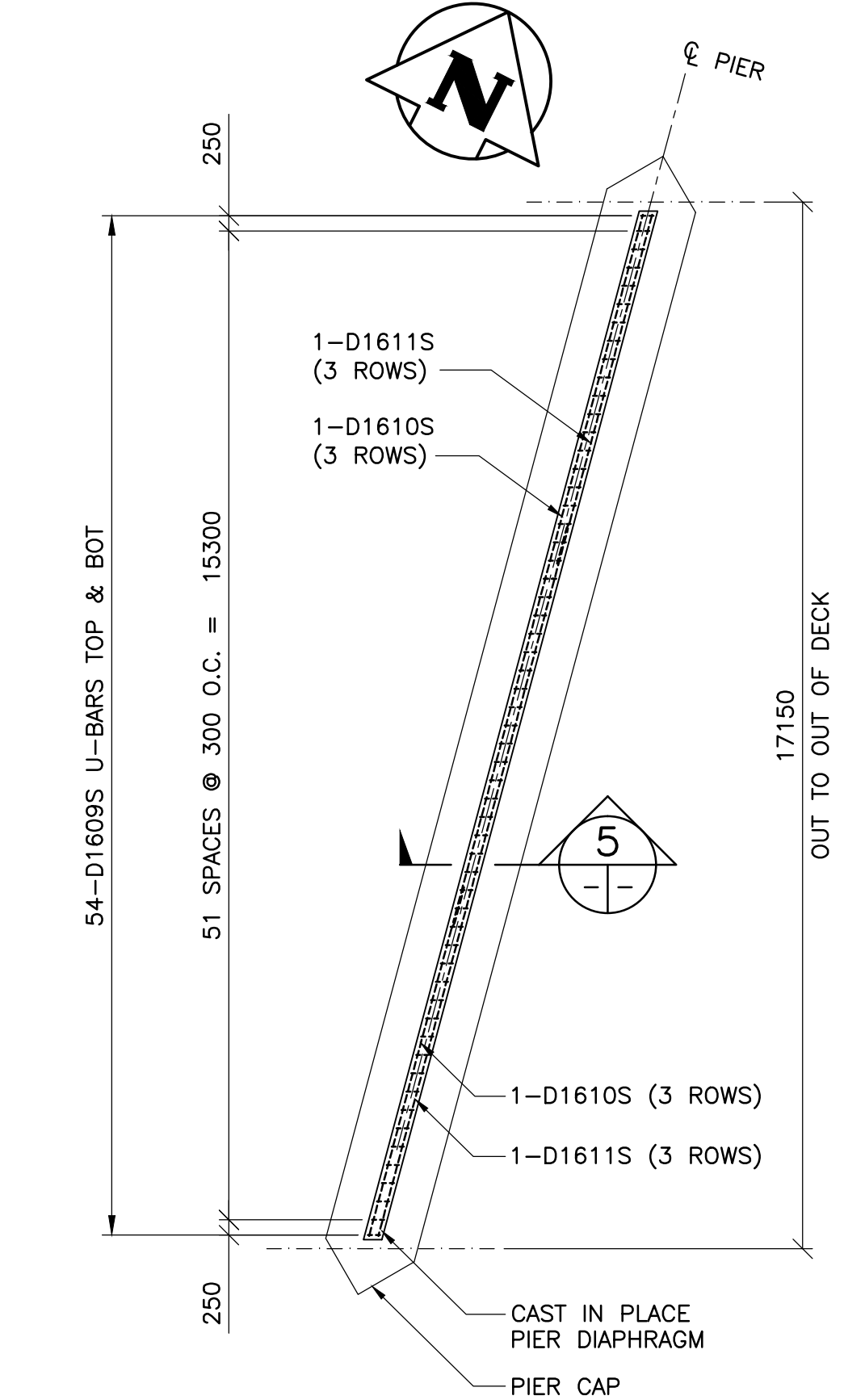
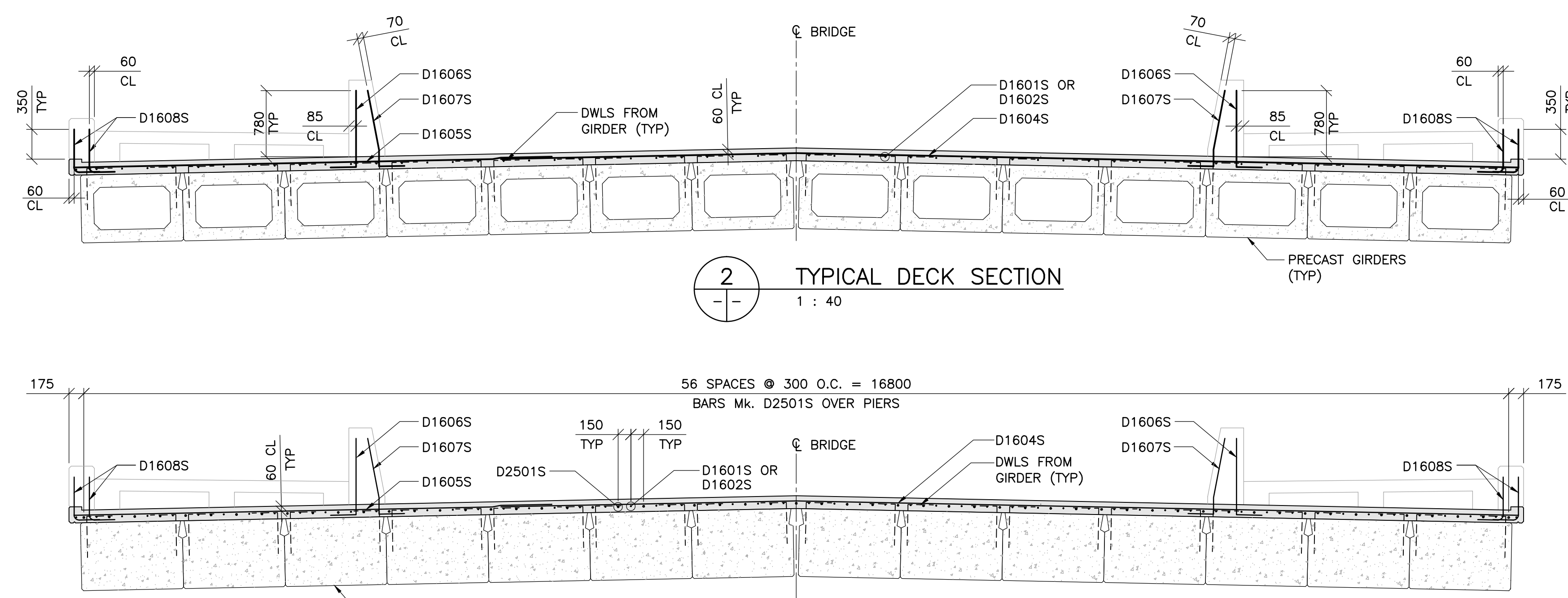


**1** DECK REINFORCING PLAN  
1 : 100

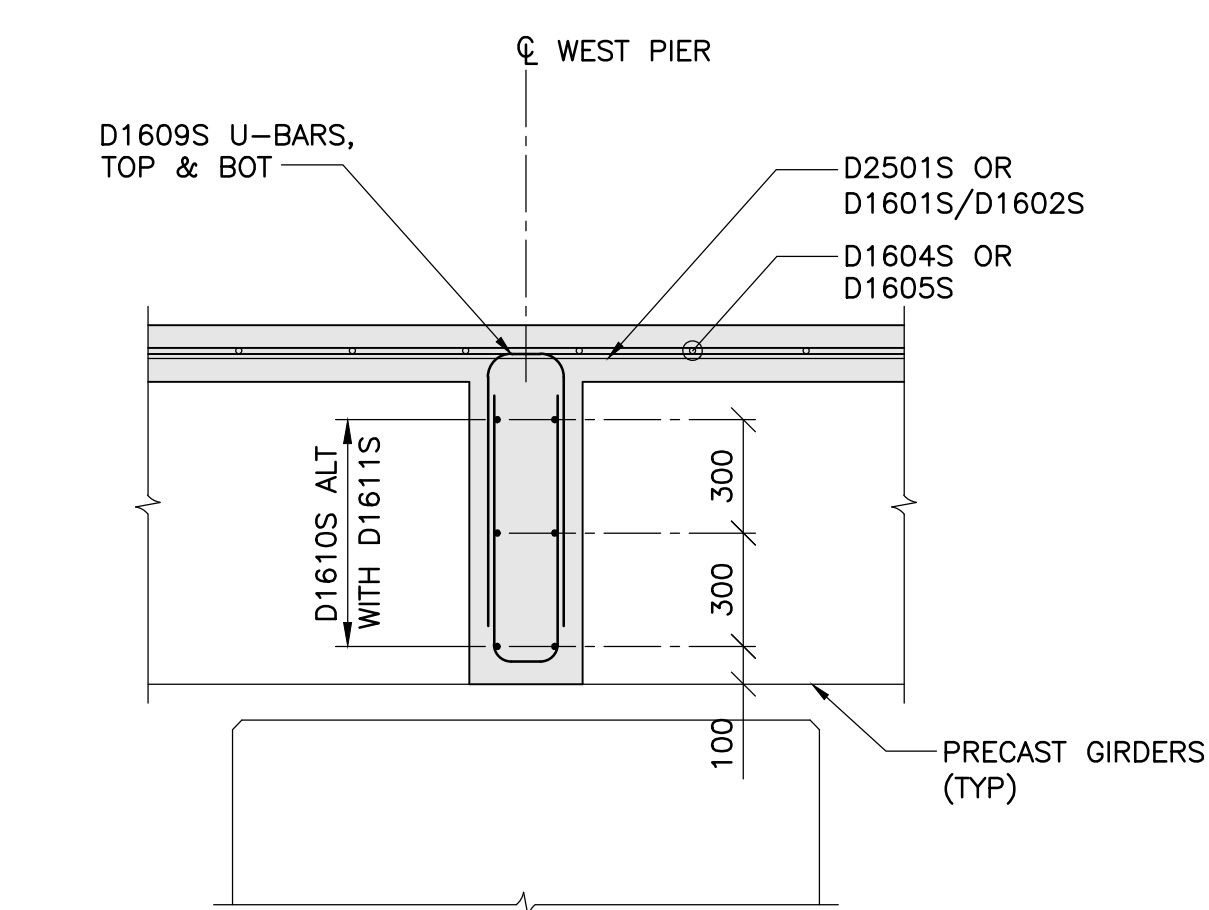


**4** PIER DIAPHRAGM - REINFORCING PLAN  
1 : 100  
- TYPICAL FOR EAST AND WEST PIER  
- ENDS OF PIER DIAPHRAGM TO MATCH OUTSIDE FACE OF EXTERIOR GIRDERS

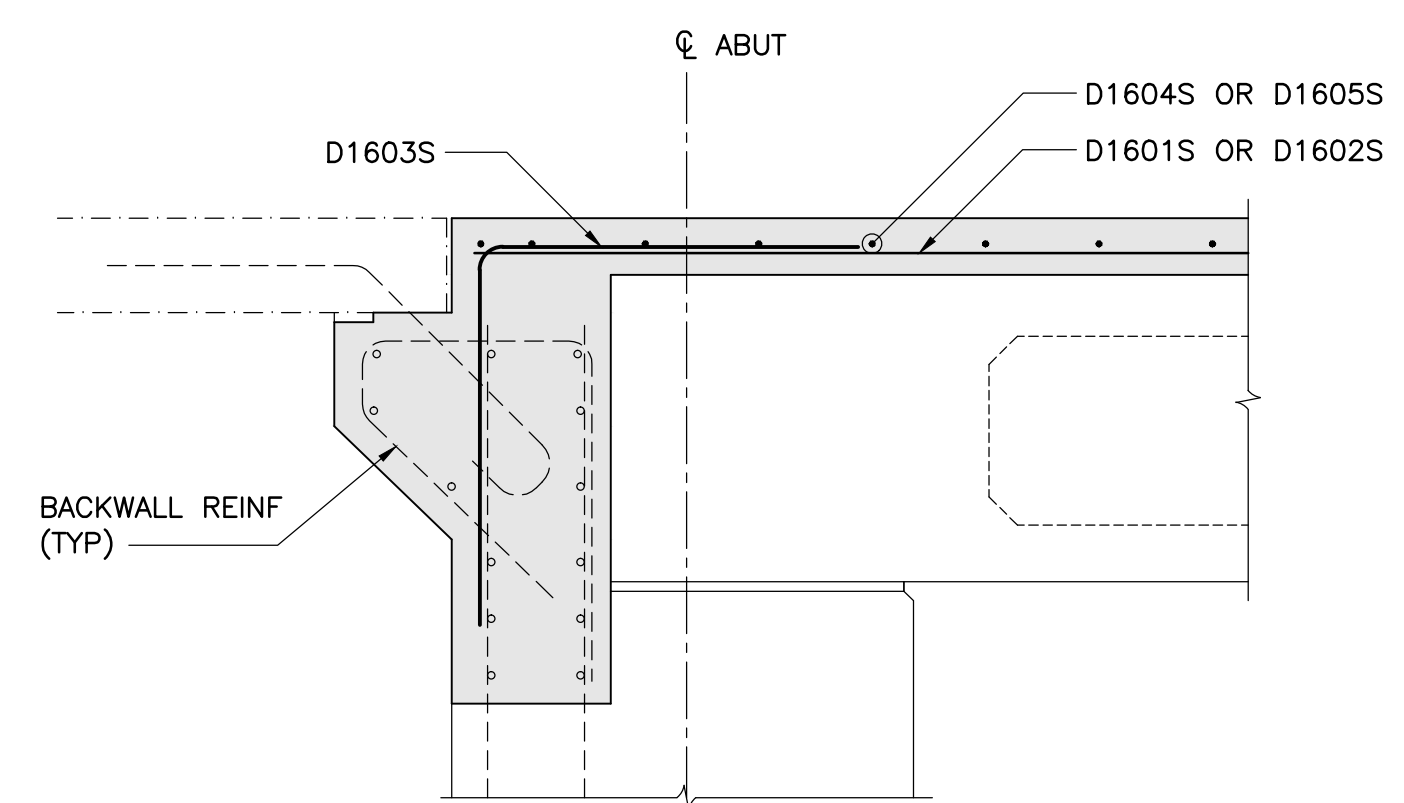


**2** TYPICAL DECK SECTION  
1 : 40

**3** DECK SECTION OVER PIER  
1 : 40



**5** PIER DIAPHRAGM - SECTION  
1 : 20



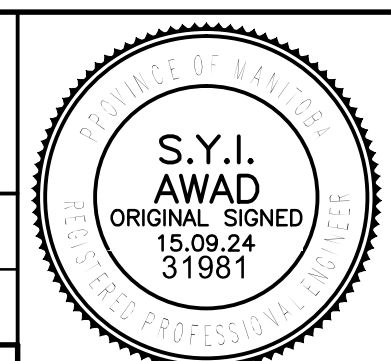
**6** SECTION AT ABUTMENT  
1 : 20

NOTE:  
• SEE SHEET 35 FOR BACKWALL REINFORCING DETAILS  
• SEE SHEET 36 FOR SIDEWALK, CONCRETE BARRIER AND CONCRETE CURB REINFORCING DETAILS



NO.	REVISIONS	DATE	BY
0	ISSUED FOR TENDER	15.09.24	S.A.

<b>TETRA TECH</b>	
DESIGNED BY D.M.	CHECKED BY S.A.
DRAWN BY G.I.	APPROVED BY E.F.S.
HOR. SCALE: AS NOTED	DATE 15.09.24
VERTICAL: AS NOTED	ORIGINAL DRAWING SIGNED BY: D.N. BURMEY, P.ENG.
DATE 15.09.24	D.N. BURMEY, P.ENG. BRIDGE PROJECTS ENGINEER



**THE CITY OF WINNIPEG**  
PUBLIC WORKS DEPARTMENT  
ENGINEERING DIVISION

NESS AVENUE AT STURGEON CREEK  
BRIDGE CONSTRUCTION

CONSULTANT DRAWING NO. 1400070800-DWG-S0034

CITY DRAWING NUMBER B243-15-034  
SHEET 34 OF 64

DECK - REINFORCING DETAILS

34