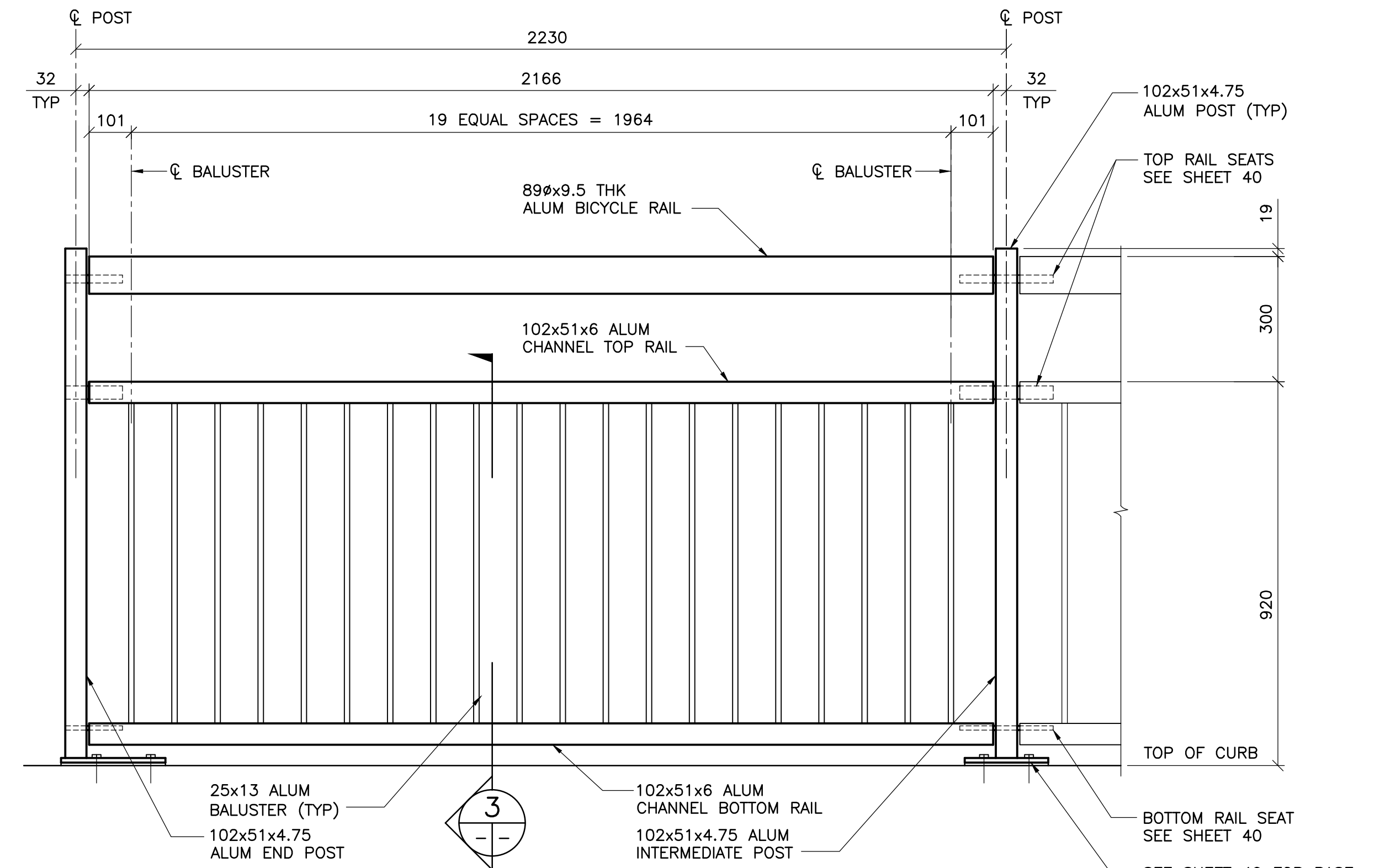
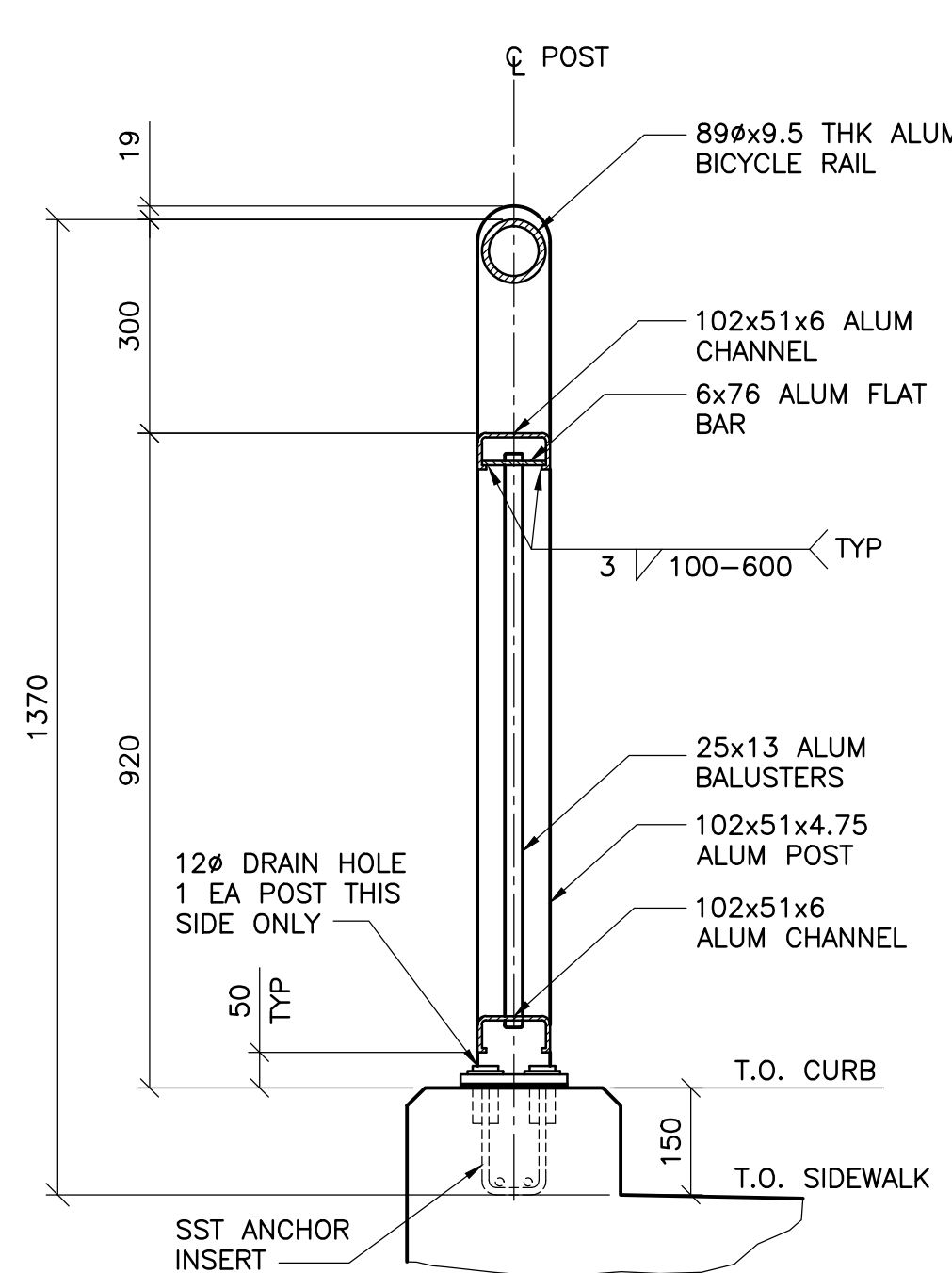


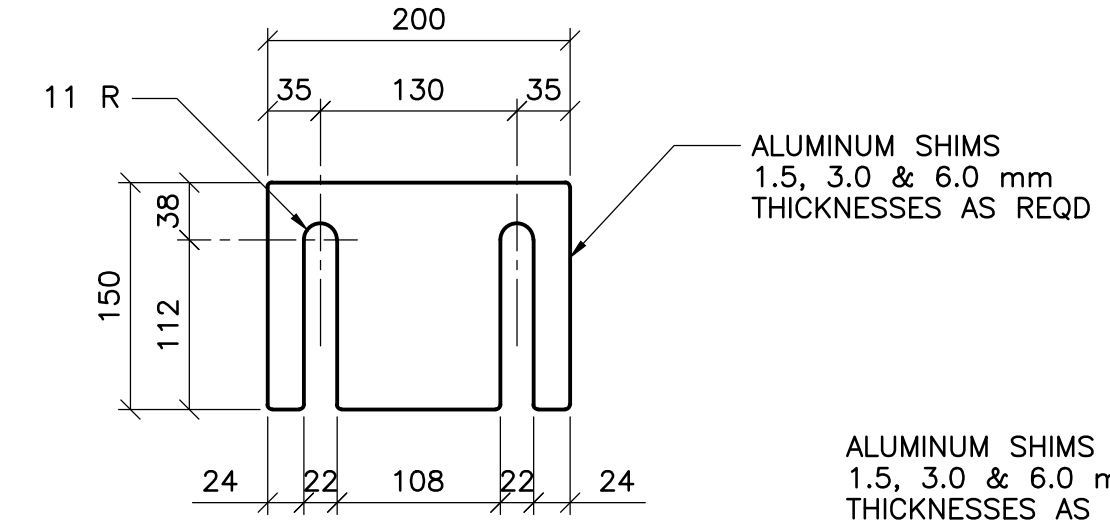
1 ELEVATION - INTERMEDIATE PANEL MK. 'A'
1 : 10



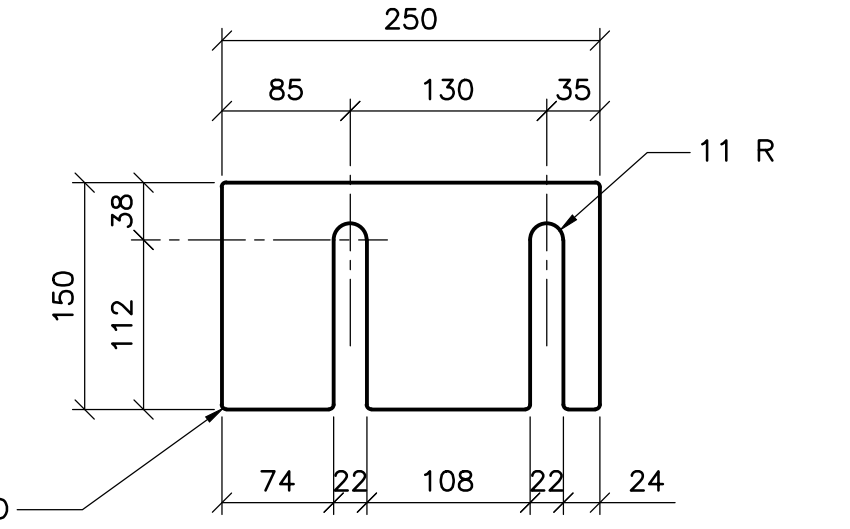
2 ELEVATION - END PANEL MK. 'B'
1 : 10



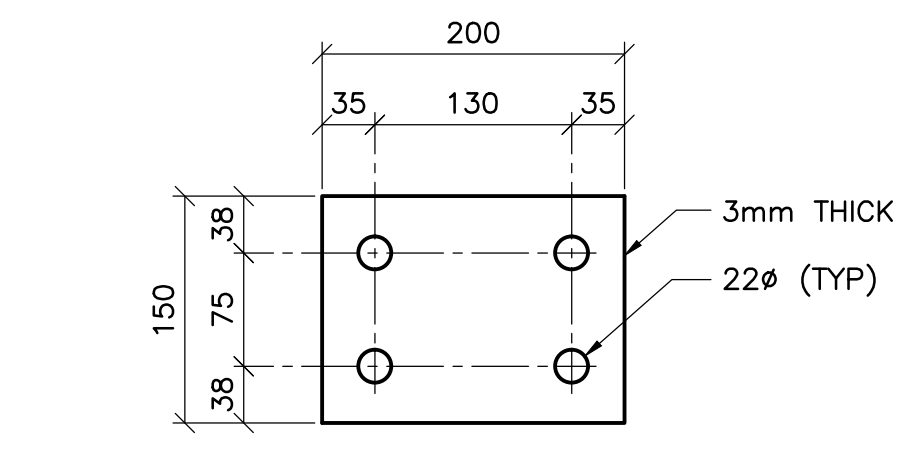
3 TYPICAL SECTION
1 : 10



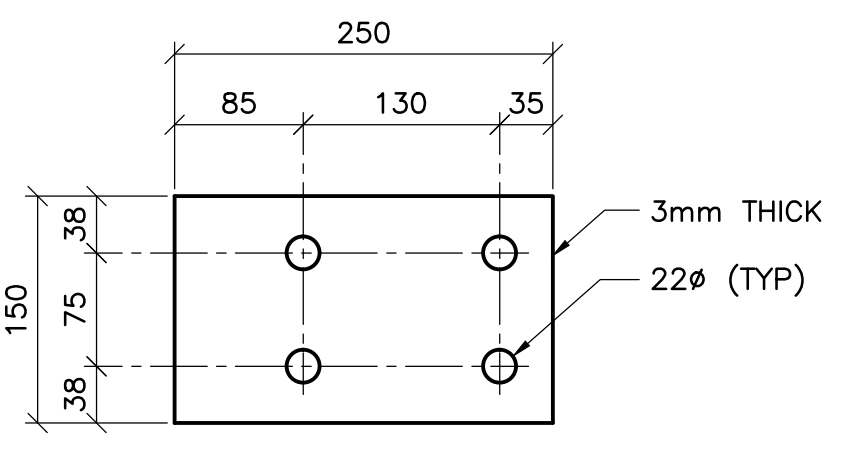
4 SHIM DETAIL
1 : 5
- TYP AT ALL INTERMEDIATE POST



5 SHIM DETAIL - END POST
1 : 5
- TYP AT ALL END POST



6 NEOPRENE PAD DETAIL
1 : 5
- TYP AT ALL INTERMEDIATE POST



7 NEOPRENE PAD DETAIL - END POST
1 : 5
- TYP AT ALL END POST

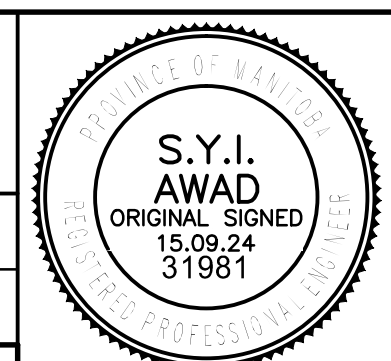
- NOTES:
1. ALUMINUM EXTRUSIONS SHALL CONFORM TO ASTM B221 ALLOY 6351-T6.
 2. ALUMINUM PLATES SHALL CONFORM TO ASTM B221 ALLOY 5083.
 3. THE M.I.C. PROCESS OF WELDING SHALL BE USED.
 4. SST DENOTES STAINLESS STEEL.
 5. RAIL POSTS AND BALUSTERS SHALL BE SET VERTICAL.
 6. PLACE MINIMUM OF ONE 3mm ALUMINUM SHIM UNDER EACH POST. ADDITIONAL SHIMS MAY BE REQUIRED FOR VERTICAL ALIGNMENT. THE SURFACE OF SHIMS IN CONTACT WITH CONCRETE SHALL BE PAINTED WITH 2 COATS OF ALKALI RESISTANT BITUMINOUS PAINT MEETING THE REQUIREMENTS OF CGSB 31-GP-3M.
 7. HANDRAIL ANCHOR INSERTS SHALL BE ACROW-RICHMOND TYPE DGRS-1.



B.M. ELEV.			
DESIGNED BY	D.M.	CHECKED BY	S.A.
DRAWN BY	G.I.	APPROVED BY	E.F.S.
HOR. SCALE:	AS NOTED	ACCEPTED BY	DATE
VERTICAL:	AS NOTED	ORIGINAL DRAWING SIGNED BY:	15.09.24
0 ISSUED FOR TENDER	15.09.24	S.A.	
NO. REVISIONS	DATE	BY	DATE
	15.09.24		



CONSULTANT DRAWING NO.	1400070800-DWG-S0039
DATE	15.09.24
BRIDGE PROJECTS ENGINEER	D.N. BURNEY, P.ENG.



THE CITY OF WINNIPEG
PUBLIC WORKS DEPARTMENT
ENGINEERING DIVISION

NESS AVENUE AT STURGEON CREEK
BRIDGE CONSTRUCTION

ALUMINUM PEDESTRIAN HANDRAIL
ELEVATIONS, SECTIONS AND DETAILS

CITY DRAWING NUMBER
B243-15-039
SHEET 39 OF 64

39