

BILL OF REINFORCING - BLACK STEEL BARS																				
	MARK	NO. BARS	SIZE	LENGTH	TYPE	A	B	C	D	E	F	G	H	J	K	O	R	TOTAL (m)	MASS (kg)	
GIRDERS	G1501	3612	15	2420	17		675	1070	675									8741.04	13723.43	
	G1502	168	15	2430	17		675	1080	675									408.24	640.94	
	G1503	504	15	2460	17		675	1110	675									1239.84	1946.55	
	G1504	924	15	12000	STR													11088.00	17408.16	
	G1505	924	15	2770	STR													2559.48	4018.38	
	G1506	84	15	3180	T2	140	800	650	800	650		140						267.12	419.38	
	G1507	84	15	3270	T2	140	845	650	845	650		140						274.68	431.25	
	G1508	84	15	3370	T2	140	895	650	895	650		140						283.08	444.44	
	G1509	84	15	3430	T2	140	925	650	925	650		140						288.12	452.35	
	G1510	84	15	3520	T2	140	970	650	970	650		140						295.68	464.22	
	G1511	84	15	3620	T2	140	1020	650	1020	650		140						304.08	477.41	
	G1512	336	15	2880	T2	140	650	650	650	650		140						967.68	1519.26	
	G1513	252	15	2275	34		600	1075	600					1035		275		573.30	900.08	
	G1514	1806	15	1480	2	250	985						250					2681.91	4210.60	
G2001	336	20	1550	2	300	1250						-					520.80	817.66		
PIPE PILES	P1501	972	15	2125	T3							600				485	2065.50	3242.84		
	P3001	160	30	9000	STR												1440.00	7912.80		
	P3002	160	30	4990	2	490	4500					-					798.40	4387.21		
	P3501	20	35	9000	STR												180.00	1413.00		
	P3502	20	35	4990	STR	490	4500										99.8	783.43		
PIERS	P1502	32	15	3900	14	1000	950	-	950	1000			670				124.80	195.94		
	P1503	8	15	2325	2	250	1825				250						18.60	29.20		
	P1504	12	15	4125	17		1200	1825	1100								49.50	72.72		
	P2001	230	20	4230	17		1425	1380	1425								972.90	2291.18		
	P2002	284	20	3450	17		1425	600	1425								979.80	2307.43		
	P2003	8	20	3800	17		1340	1120	1340								30.40	71.59		
	P2004	8	20	3300	17		1340	620	1340								26.40	62.17		
	P2005	108	20	2365	17		1425	340	600								255.42	604.51		
	P2006	48	20	2490	17		600	1290	600								119.52	281.47		
	P2007	32	20	12000	STR													384.00	904.32	
	P2008	32	20	6600	STR													211.20	497.38	
	P2501	24	25	12000	STR													288.00	1130.40	
	P2502	16	25	7000	STR													112.00	439.60	
	P2503	8	25	7835	STR													62.68	246.02	
	P2504	24	25	9000	36		3170	5830					20		1000		216.00	847.80		
	P2505	24	25	4895	STR													117.48	461.11	
	P2506	24	25	7525	STR													180.60	708.86	
	SLOPE PAVING	T1501	43	15	12000	STR												516.00	810.12	
T1502		43	15	6240	STR												268.32	421.26		
T1503		58	15	6380	STR												370.04	580.96		
T1504		58	15	1145	36	250	185	230	230		250	180			50		61.83	97.07		
T1505		58	15	1110	37	250	185	195	230		250	180			50		64.38	101.08		
T1506		58	15	3485	STR												202.13	317.34		
T1507		116	15	1115	39	250	180	175	260		250	180					129.34	203.06		
T1508		58	15	600	STR												34.80	54.64		

BILL OF REINFORCING - BLACK STEEL BARS																				
	MARK	NO. BARS	SIZE	LENGTH	TYPE	A	B	C	D	E	F	G	H	J	K	O	R	TOTAL (m)	MASS (kg)	
RETAINING WALL	W1501	19	15	10740	9		10740						1135			10415	12505	204.06	320.37	
	W1502	19	15	12000	38		2875	9125					1030		9065			228.00	357.96	
	W2001	150	20	1950	STR													292.50	688.84	
	W2002	2	20	11500	9		11500						1230			11140	13210	23.00	54.17	
	W2003	2	20	11260	9		11260						1205			10910	12940	22.52	53.03	
	W2004	2	20	11020	9		11020						1180			10680	12660	22.04	51.90	
	W2005	2	20	10780	9		10780						1155			10445	12390	21.56	50.77	
	W2006	2	20	10545	9		10545						1130			10215	12110	21.09	49.67	
	W2007	2	20	10305	9		10305						1105			9980	11840	20.61	48.54	
	W2008	2	20	10065	9		10065						1080			9750	11565	20.13	47.41	
	W2009	2	20	9825	9		9825						1030			9520	11290	19.65	46.28	
	W2010	16	20	12000	9		2875	9125					180		9065			192.00	452.16	
	W2011	150	20	2500	STR													375.00	883.13	
	W2501	75	25	1980	15			400	1580				160		1575			148.50	582.86	
	W2502	75	25	1980	2	400	1580						-					148.50	582.86	
	W2503	75	25	2340	1	400	1825											175.50	688.83	
	TOTAL MASS																		96451.58	

BILL OF REINFORCING - STAINLESS STEEL BARS																				
	MARK	NO. BARS	SIZE	LENGTH	TYPE	A	B	C	D	E	F	G	H	J	K	O	R	TOTAL (m)	MASS (kg)	
ABUTMENTS	A1601S	80	16	2670	17		185	230	230									213.60	336.42	
	A1602S	2	16	2580	17		185	195	230									5.16	8.13	
	A1603S	2	16	2380	17		185	230	230									4.76	7.50	
	A1604S	2	16	2170	17		185	195	230									4.34	6.84	
	A1605S	2	16	2500	17		185	230	230									5.00	7.88	
	A1606S	2	16	2280	17		185	195	230									4.56	7.18	
	A1607S	2	16	2070	17		185	230	230									4.14	6.52	
	A1901S	8	19	6885	STR													55.08	123.82	
	A1902S	24	19	7785	STR													186.84	420.02	
	A2501S	4	25	8115	19		7240	875					6865		2300			32.46	131.04	
	A2502S	4	25	8070	19		7240	830					6865		2300			32.28	130.31	
	BACKWALL	D1612S	80	16	2225	31		800	575	185	665			470		470		178.00	280.35	
D1613S		36	16	2370	31		700	575	430	665			470		470		85.32	134.38		
D1901S		12	19	12000	STR												144.00	323.71		
D1902S		14	19	6400	STR												89.60	201.42		
D1903S		4	19	12000	19		3200	8800					340		8795		48.00	107.90		
D1904S		4	19	3175	STR													12.70	28.55	
D1905S		12	19	5525	STR													66.30	149.04	
D1906S		10	19	12000	19		3640	8360					320		8355		120.00	269.76		
D1907S		4	19	2735	STR													10.94	24.59	
D1908S		8	19	3385	2	300	3085						-					27.08	60.88	
D1909S	4	19	3100	2	300	2800						-					12.40	27.88		
D1910S	116	19	1615	30	200	740	675						610		495		187.34	421.14		

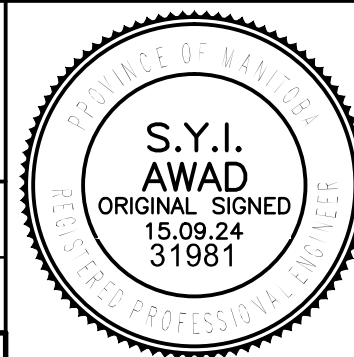
NOTE:
1. SEE SHEET 45 FOR NOTES, BENDING DIAGRAM AND BENDING DETAILS.



B.M. ELEV.	
DESIGNED BY	D.M.
CHECKED BY	S.A.
DRAWN BY	G.I.
APPROVED BY	E.F.S.
HOR. SCALE:	AS NOTED
VERTICAL:	AS NOTED
ISSUED FOR TENDER	15.09.24
NO. REVISIONS	



ACCEPTED BY	DATE
D.N. BURNEY, P.ENG.	15.09.24
CONSULTANT DRAWING NO.	1400070800-DWG-S0046



NESS AVENUE AT STURGEON CREEK BRIDGE CONSTRUCTION		CITY DRAWING NUMBER
		B243-15-046
		SHEET 46 OF 64
REINFORCING SCHEDULE SHEET 2 OF 3		46