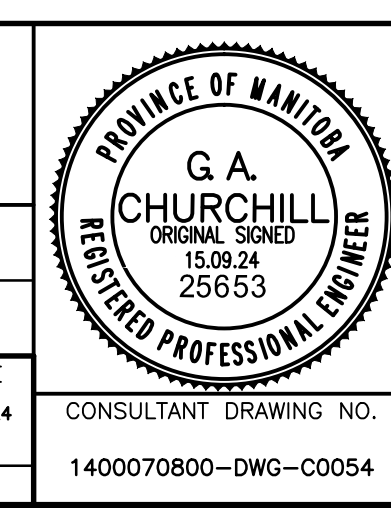


150 WM	WATERMAIN	150 WM	SWALE	RIGHT-OF-WAY
400 FM	FEEDERMAIN	400 FM	MANHOLE	GAS
300 LDS	LAND DRAINAGE SEWER	300 LDS	CATCHBASIN	HYDRO
250 WWS	WASTEWATER SEWER	250 WWS	HYDRO BOX	MTS
300 CS	COMBINED SEWER	300 CS	HYDRO POLE	DETECTABLE WARNING TILE
200 FCM	FORCEMAIN	200 FCM	LIGHT STANDARD	ELEVATION
	JUNCTIONS		ANCHOR	SIDEWALK
	HYDRANT		TREE	CURB
	VALVE		SURVEY BAR	ASPHALT
	CURB STOP		SIGNAL CONTROLLER	CONCRETE
EXISTING	LEGEND-PLAN	PROPOSED	EXISTING	LEGEND-PLAN

LOCATION APPROVED UNDERGROUND STRUCTURES		B.M. ELEV.
SUPV. U/G STRUCTURES	DATE	
COMMITTEE		
NOTE: LOCATION OF UNDERGROUND STRUCTURES AS SHOWN ARE BASED ON THE BEST INFORMATION AVAILABLE. BUT NO GUARANTEE IS GIVEN THAT ALL EXISTING UTILITIES ARE SHOWN OR THAT THE GIVEN LOCATIONS ARE EXACT. CONFIRMATION OF EXISTENCE AND EXACT LOCATION OF ALL SERVICES MUST BE OBTAINED FROM THE INDIVIDUAL UTILITIES BEFORE PROCEEDING WITH CONSTRUCTION.		
0	ISSUED FOR TENDER	15.09.24
	NO. REVISIONS	DATE

TETRA TECH	
DESIGNED BY: GAC, GMD	CHECKED BY: GAC
DRAWN BY: GMD	APPROVED BY: EFS
HOR. SCALE: 1 : 500	ACCEPTED BY: DATE
VERTICAL: 1 : 50	ORIGINAL DRAWING SIGNED BY: D.N. BURNEY, P.ENG. 15.09.24
DATE: 15.09.24	D.N. BURNEY, P.ENG. BRIDGE PROJECTS ENGINEER



THE CITY OF WINNIPEG
 PUBLIC WORKS DEPARTMENT
 ENGINEERING DIVISION

NESS AVENUE AT STURGEON CREEK BRIDGE CONSTRUCTION

STURGEON CREEK PATHWAY PLAN, PROFILES AND BANK STABILIZATION

CITY DRAWING NUMBER: P-3465-15-007
 SHEET 54 OF 64

CONSULTANT DRAWING NO. 1400070800-DWG-C0054

DATE: 15.09.24

