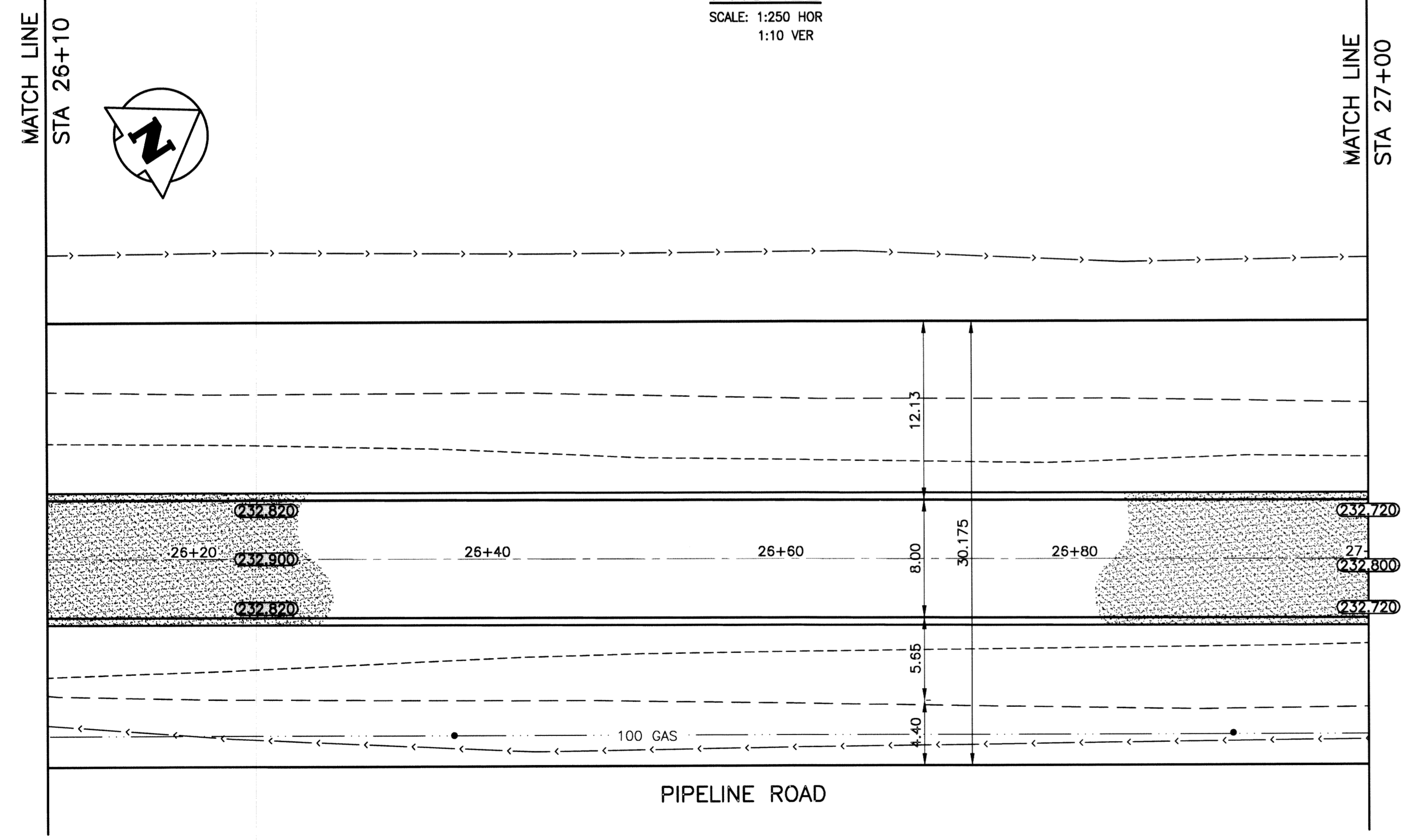
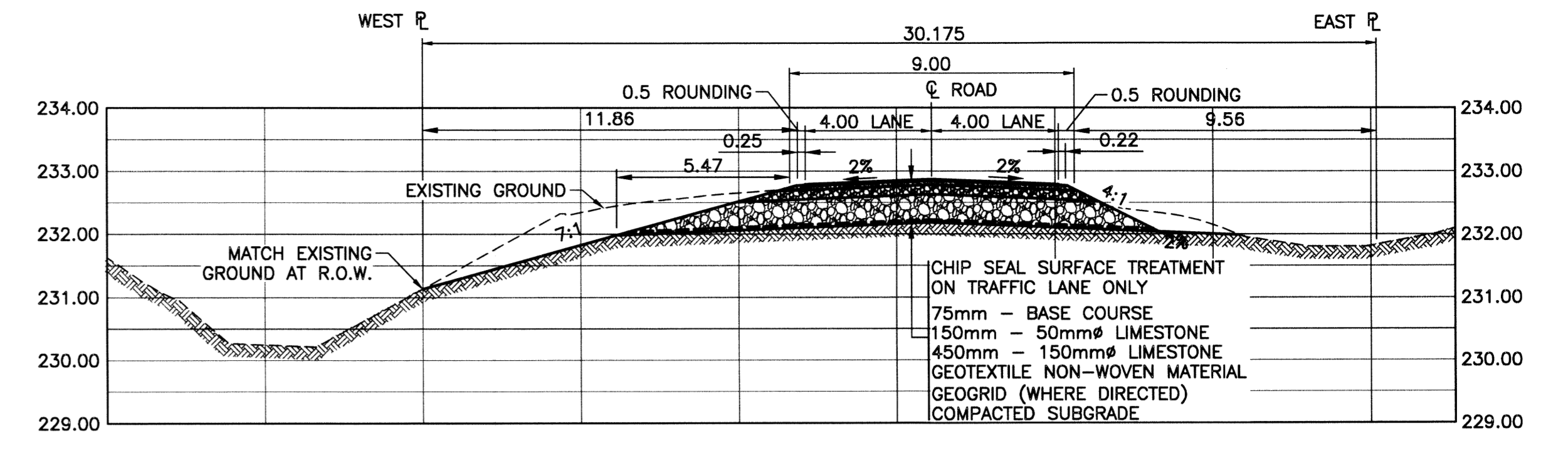


26+50 **PROFILE** 27+00  
SCALE: 1:250 HOR  
1:10 VER



**PAVEMENT PLAN**  
SCALE: 1:250 HOR



**DESIGN ROADWAY SECTION @ 26+60**  
SCALE: 1:150 HOR 1:75 VER



- NOTES:**
- ALL WORKS TO BE IN ACCORDANCE WITH THE LATEST REVISION OF THE CITY OF WINNIPEG STANDARD CONSTRUCTION SPECIFICATIONS.
  - STATION CHAINAGE IS BASED ON CENTRELINE OF PROPOSED ROADWAY.
  - REGRADE EXISTING PRIVATE APPROACHES AS REQUIRED.
  - CONTACT MANITOBA HYDRO TO LOWER FIBRE OPTIC CABLE WHERE REQUIRED.
  - REGRADE EXISTING DITCHES AS DIRECTED BY CONTRACT ADMINISTRATOR.
  - RENEW EXISTING APPROACHES AS DIRECTED BY CONTRACT ADMINISTRATOR.
  - NEW CULVERTS TO BE INSTALLED UNDER ALL APPROACHES AS DIRECTED BY CONTRACT ADMINISTRATOR.
  - CHIP-SEAL SURFACE TREATMENT ON APPROACHES AND TRAFFIC LANE ONLY.

**APEGM**  
Certificate of Authorization  
KGS Group  
No. 245

**METRIC**  
WHOLE NUMBERS INDICATE MILLIMETRES  
DECIMALIZED NUMBERS INDICATE METRES

**WARNING**

- NOTIFY THE GAS COMPANY OF THE PROPOSED LOCATION OF EXCAVATION.
- TAKE PRECAUTION TO AVOID DAMAGE TO GAS COMPANY INSTALLATIONS.
- SEE PROVINCIAL REGULATION 210/72 FOR DETAILS.
- AVOID DAMAGE TO EXISTING MANITOBA HYDRO EASEMENT WITHIN THE LIMITS OF CONSTRUCTION.
- TAKE PRECAUTION TO AVOID DAMAGE TO MTS UNDERGROUND CABLES.

300 LBS	LAND DRAINAGE SEWER	300 LBS	BACK OF CURB			
250 WWS	WASTE WATER SEWER	250 WWS	CONCRETE			
	GAS		GRAVEL ROAD			
	HYDRO		SHOULDER			
	M.T.S.		DITCH			
150 WM	WATERMAIN	150 WM	SIDEWALK			
⊕	HYDRANT	⊕	PROPERTY LINE			
⊙	VALVE	⊙	CULVERT			
○	MANHOLE	○	GUY WIRE			
□	CATCH BASIN	□	TREE			
▽	CURB INLET	▽	SURVEY BAR			
•	LIGHT STANDARD	•	GEODETIC BENCHMARK			
•	POLES	•	ELEVATION			
•	POLES	•	ELEVATION			
EXISTING	LEGEND-PLAN	PROPOSED	EXISTING	LEGEND-PLAN	PROPOSED	EXISTING

<b>LOCATION APPROVED UNDERGROUND STRUCTURES</b>		B.M. KGS BASE ELEV.	DRAWING BASED ON C.S.R.S. NAD 83 SYSTEM, UTM GRID
SUPV. U/G STRUCTURES COMMITTEE	DATE		
NOTE: LOCATION OF UNDERGROUND STRUCTURES AS SHOWN ARE BASED ON THE BEST INFORMATION AVAILABLE BUT NO GUARANTEE IS GIVEN THAT ALL EXISTING UTILITIES ARE SHOWN OR THAT THE GIVEN LOCATIONS ARE EXACT. CONFIRMATION OF EXISTENCE AND EXACT LOCATION OF ALL SERVICES MUST BE OBTAINED FROM THE INDIVIDUAL UTILITIES BEFORE PROCEEDING WITH CONSTRUCTION.			
0	ISSUED FOR CONSTRUCTION	15/06/11	By
NO.	REVISIONS	DATE	BY

<b>KGS GROUP CONSULTING ENGINEERS</b>		ENGINEER'S SEAL
DESIGNED BY	MK	CHECKED BY
DRAWN BY	GEL	APPROVED BY
HOR. SCALE:	1:250	RELEASED FOR CONSTRUCTION:
VERTICAL:	1:10	DATE
0	ISSUED FOR CONSTRUCTION	15/06/11
NO.	REVISIONS	DATE

**THE CITY OF WINNIPEG**  
PUBLIC WORKS DEPARTMENT  
ENGINEERING DIVISION

PROJECT TITLE: **PIPELINE ROAD PAVEMENT RECONSTRUCTION**  
100±m SOUTH OF MOLLARD AVENUE TO GARDEN VIEW DRIVE  
STA 26+10 TO STA 27+00

SHEET 14 OF 16  
COMPUTER FILE NAME: PIPELINE-PL0T  
CITY DRAWING NUMBER: 026

CONSULTANT DRAWING NO. 14-0107-010\_026

U:\PMS\14-0107-010\14-0107-010-CALZ.dwg - Job: CU28 Printed By: dweber 05/11/2015 [Thu 9:00am]