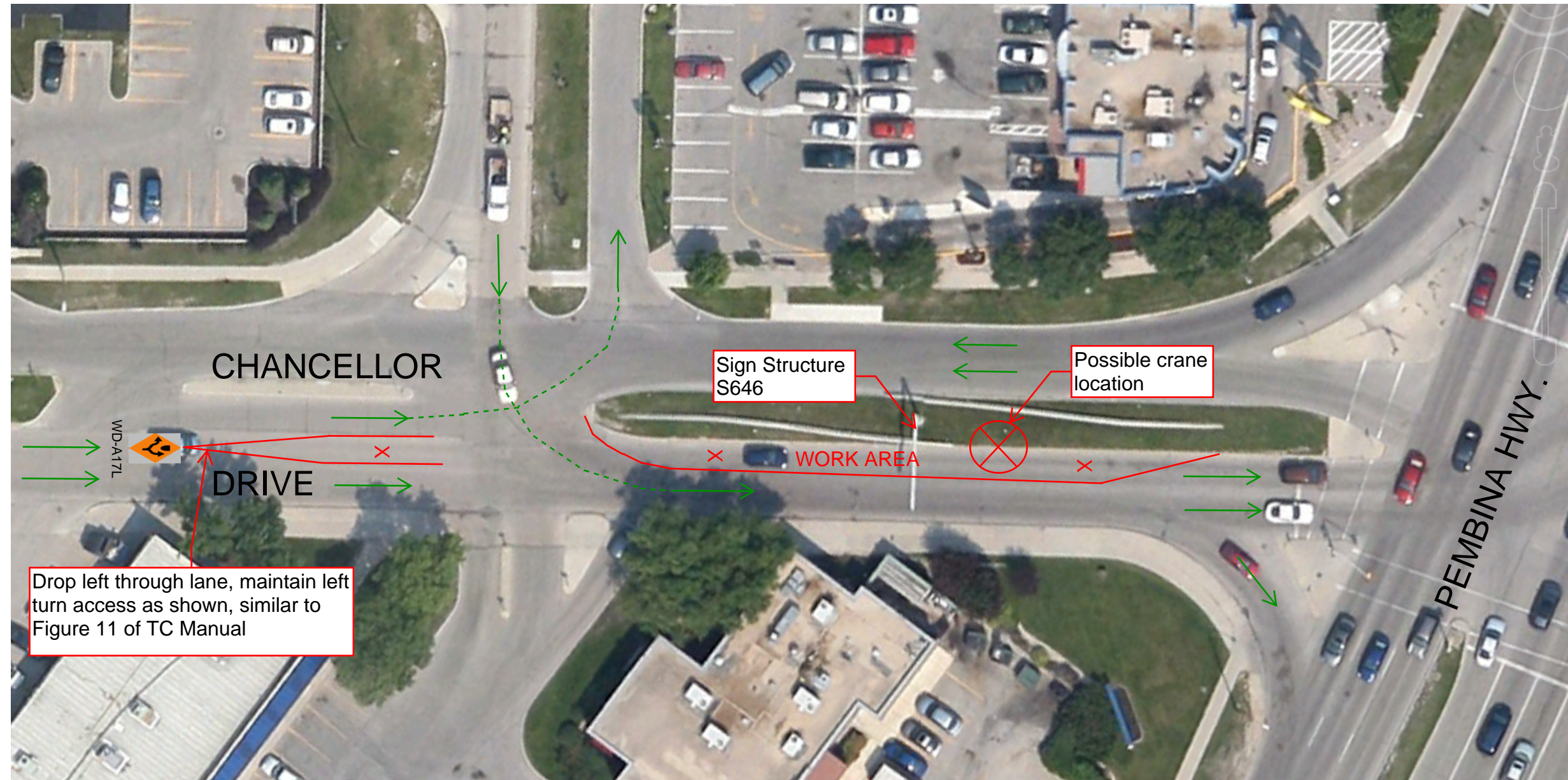
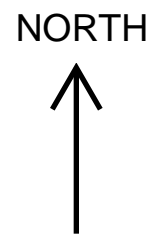






APPENDIX 'A'

TRAFFIC MANAGEMENT PLANS

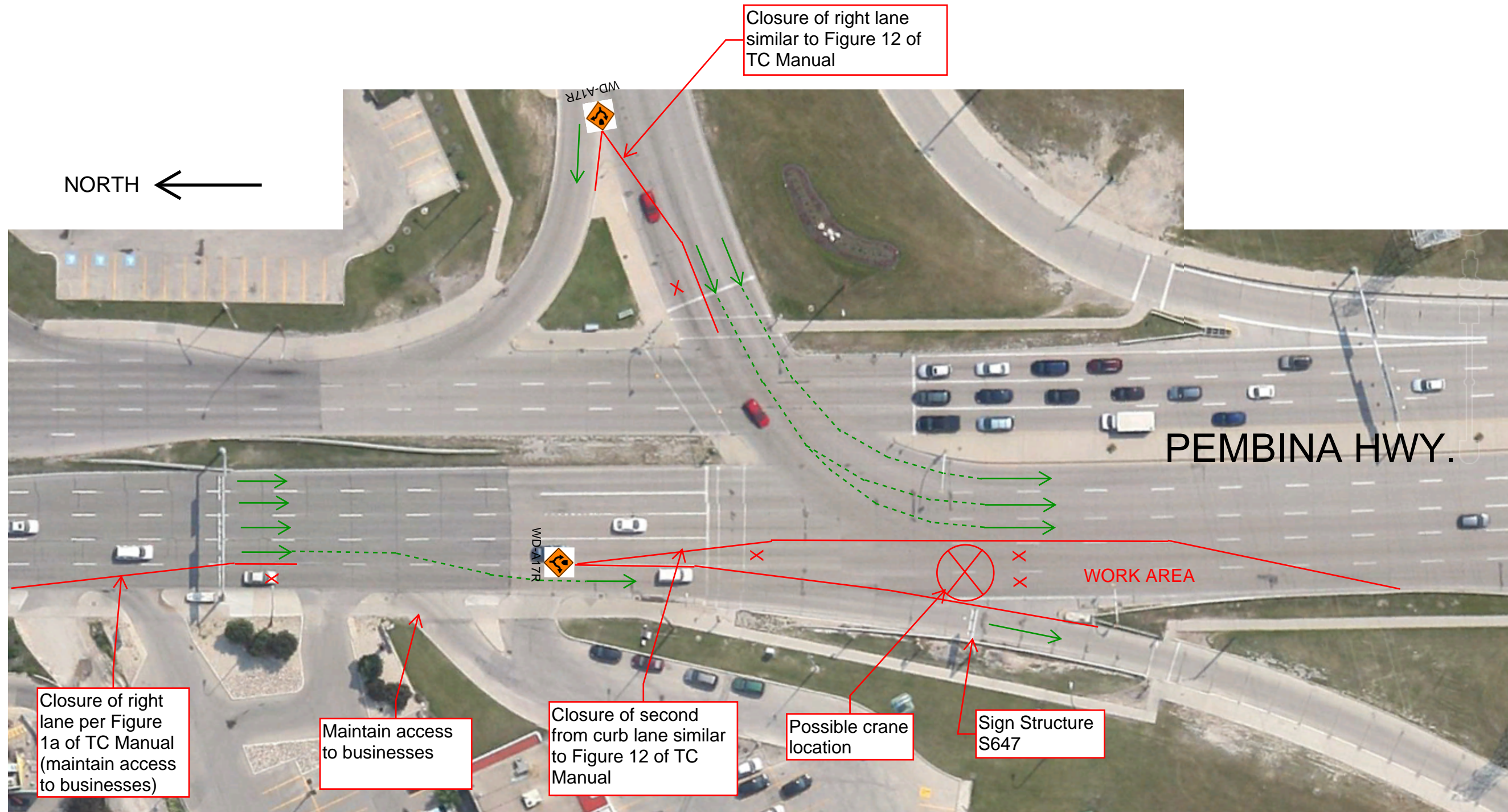


LEGEND

-  Lanes open to traffic
-  Clarification of traffic turning movements
-  Lanes closed to traffic
-  Delineation of closed lanes

NOTES:

1. This drawing is for conceptual purposes only. All traffic control signage, devices, and installations shall be in accordance with the City of Winnipeg Manual of Temporary Traffic Control (latest edition).
2. Refer to project specifications for detailed traffic control requirements.



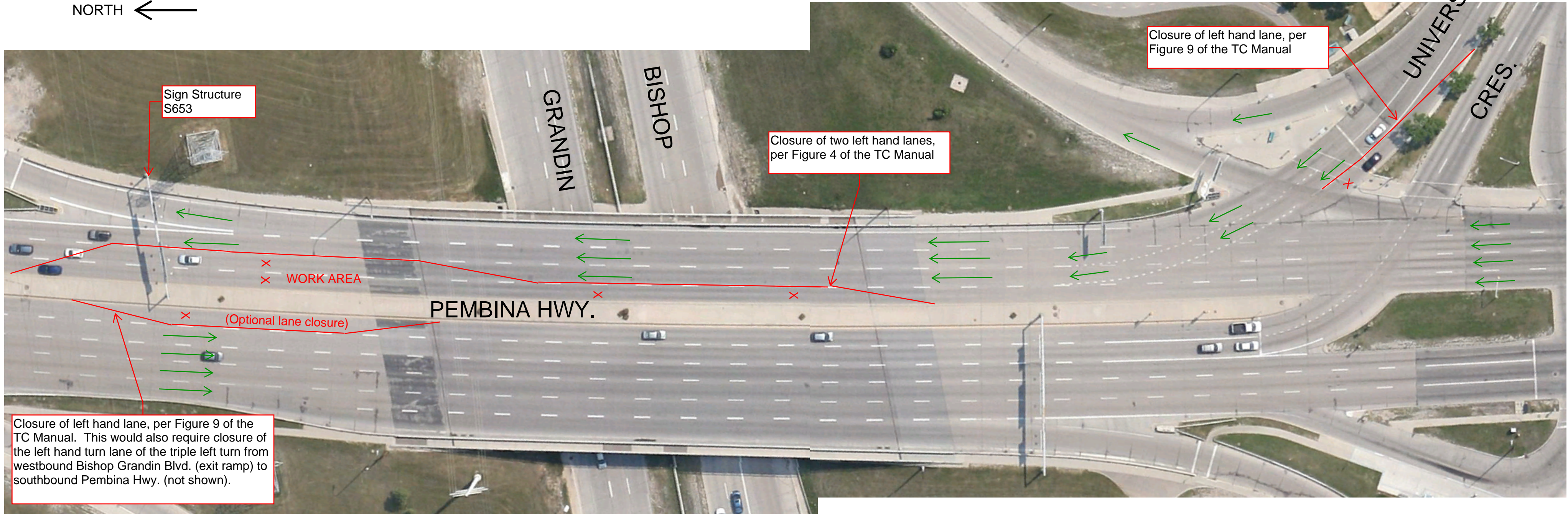
LEGEND

- Lanes open to traffic
- - - Clarification of traffic turning movements
- X Lanes closed to traffic
- Delineation of closed lanes

NOTES:

1. This drawing is for conceptual purposes only. All traffic control signage, devices, and installations shall be in accordance with the City of Winnipeg Manual of Temporary Traffic Control (latest edition).
2. Refer to project specifications for detailed traffic control requirements.

NORTH ←



Sign Structure S653

Closure of two left hand lanes, per Figure 4 of the TC Manual




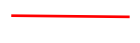
Closure of left hand lane, per Figure 9 of the TC Manual

WORK AREA

(Optional lane closure)

Closure of left hand lane, per Figure 9 of the TC Manual. This would also require closure of the left hand turn lane of the triple left turn from westbound Bishop Grandin Blvd. (exit ramp) to southbound Pembina Hwy. (not shown).

LEGEND

-  Lanes open to traffic
-  Clarification of traffic turning movements
-  Lanes closed to traffic
-  Delineation of closed lanes

NOTES:

1. This drawing is for conceptual purposes only. All traffic control signage, devices, and installations shall be in accordance with the City of Winnipeg Manual of Temporary Traffic Control (latest edition).
2. Refer to project specifications for detailed traffic control requirements.