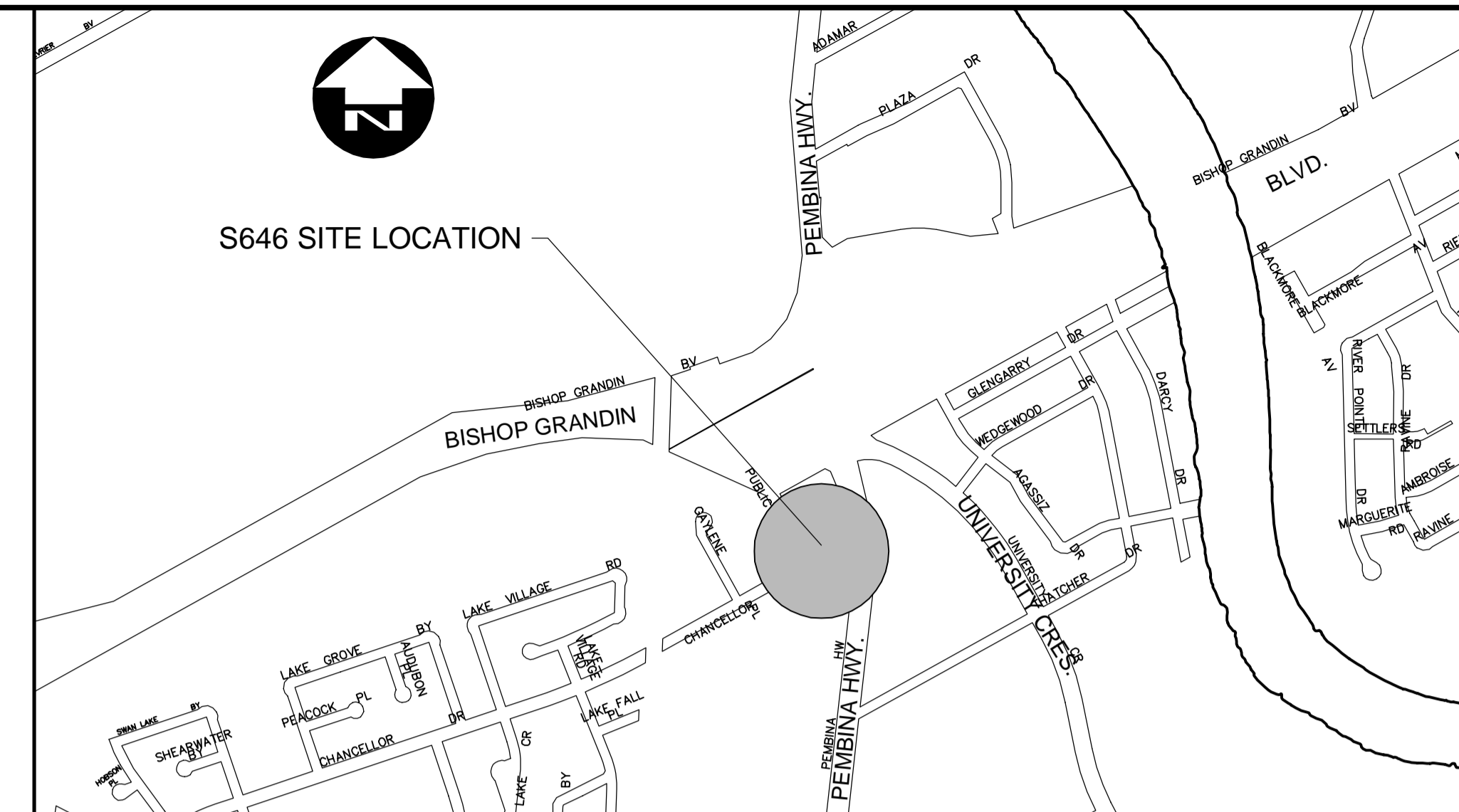
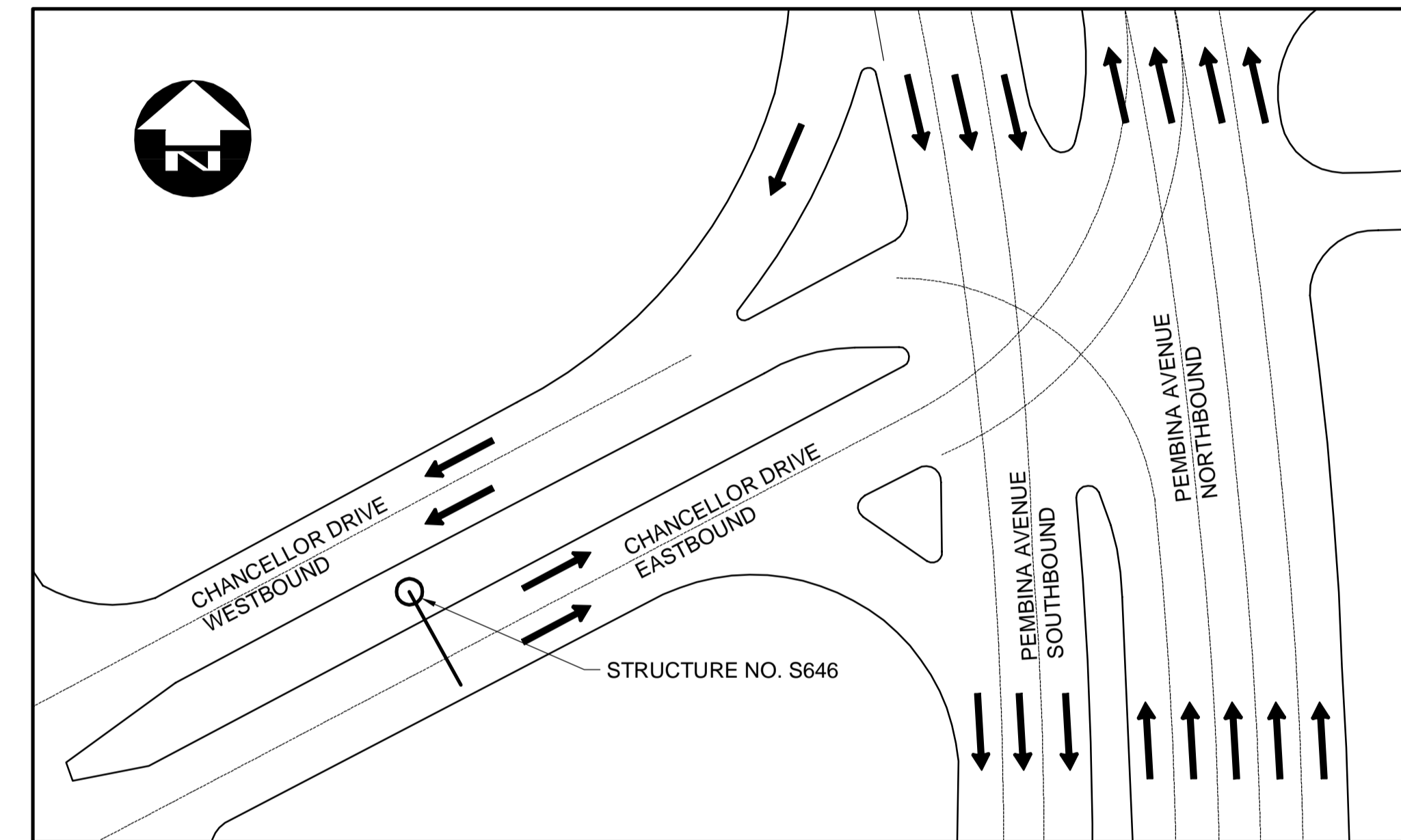


SITE ELEVATION - LOOKING EAST
OVERHEAD SIGN SUPPORT STRUCTURE No. S646



LOCATION MAP



SITE PLAN

NOTES:

1. REPLACE EXISTING S.S. BOLTS WITH ASTM A325 TYPE 1 HOT-DIP GALVANIZED BOLTS C/W 1 NUT AND 2 WASHERS, LENGTH OF BOLT TO SUIT.
2. CLIP WASHERS TO CLEAR AS DIRECTED BY THE CONTRACT ADMINISTRATOR.
3. APPROX. MASS OF EXISTING STEEL STRUCTURE: 1100kg.
4. EXACT LOCATION OF SIGN PLATES AND SIGN PLATE BRACKETS SHALL BE FIELD MEASURED AND RECORDED BY THE CONTRACTOR PRIOR TO REMOVAL.
5. FINAL INSTALLED LOCATION OF SIGNS AND MOUNTING BRACKETS WILL BE DETERMINED BY THE CONTRACT ADMINISTRATOR.

METRIC

WHOLE NUMBERS INDICATE MILLIMETRES
DECIMALIZED NUMBERS INDICATE METRES



B.M. ELEV.	DESIGNED BY	CDW
	DRAWN BY	KB
	CHECKED BY	SSR
	APPROVED BY	-
	HOR. SCALE	-
	VERTICAL	-
0 ISSUED FOR TENDER	DATE	06/19/15 CDW
NO. REVISIONS	DATE	BY DATE June 19, 2015

DILLON CONSULTING

RELEASED FOR CONSTRUCTION

DATE

ENGINEER'S SEAL

PROVINCE OF MANITOBA

ORIGINAL STAMPED BY

C.D. WARD

06/19/2015

Member 24456

REGISTERED PROFESSIONAL ENGINEER

CONSULTANT PROJECT NUMBER

15-1815

THE CITY OF WINNIPEG
PUBLIC WORKS DEPARTMENT

Winnipeg

STEEL OVERHEAD SIGN SUPPORT STRUCTURES - 2015 MAINTENANCE WORKS

S646 CHANCELLOR DRIVE EB, WEST OF PEMBINA HWY.

CITY DRAWING NUMBER
OHSS-15-04

SHEET 4 OF 7

CONSULTANT DRAWING NUMBER
N/A