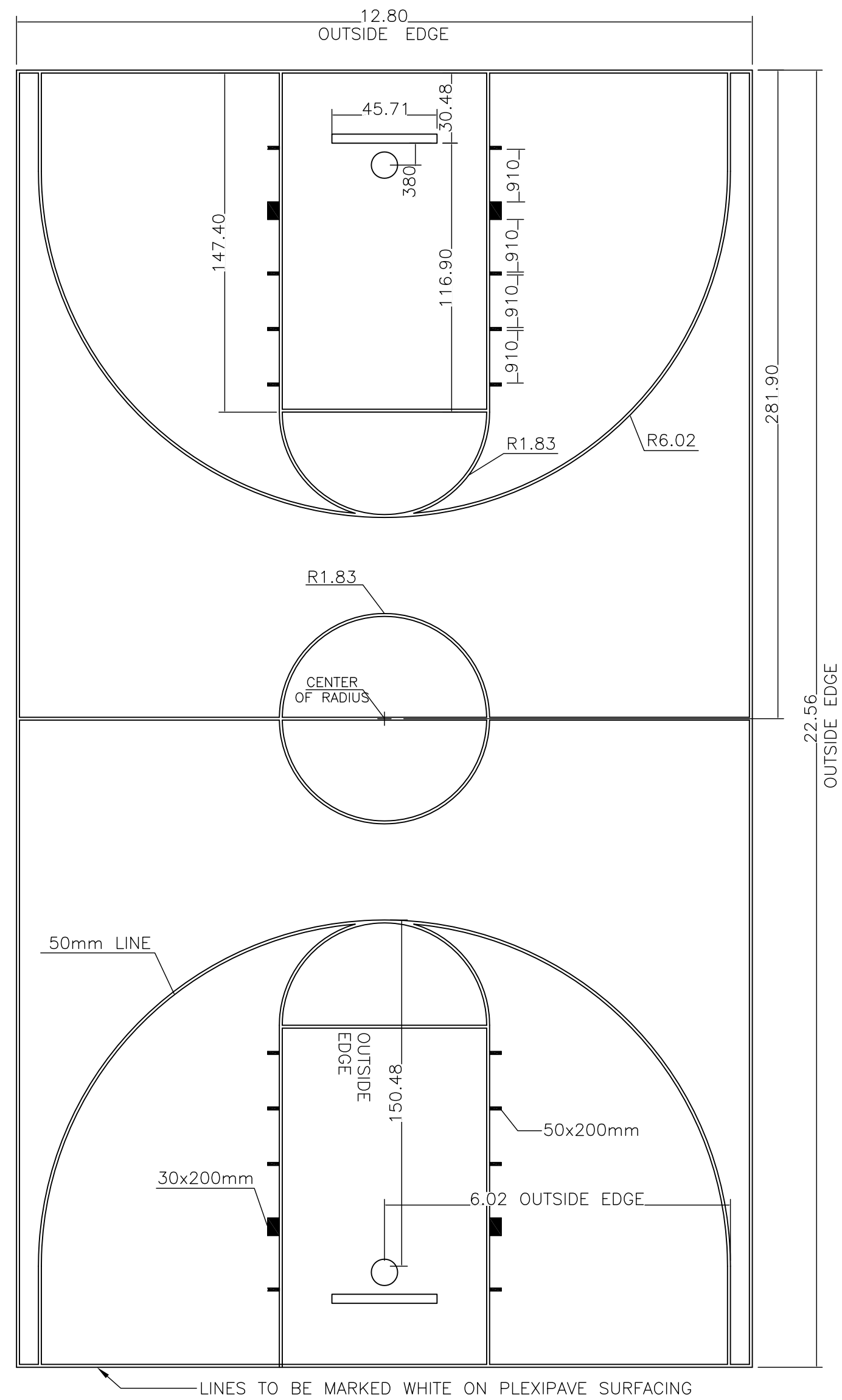
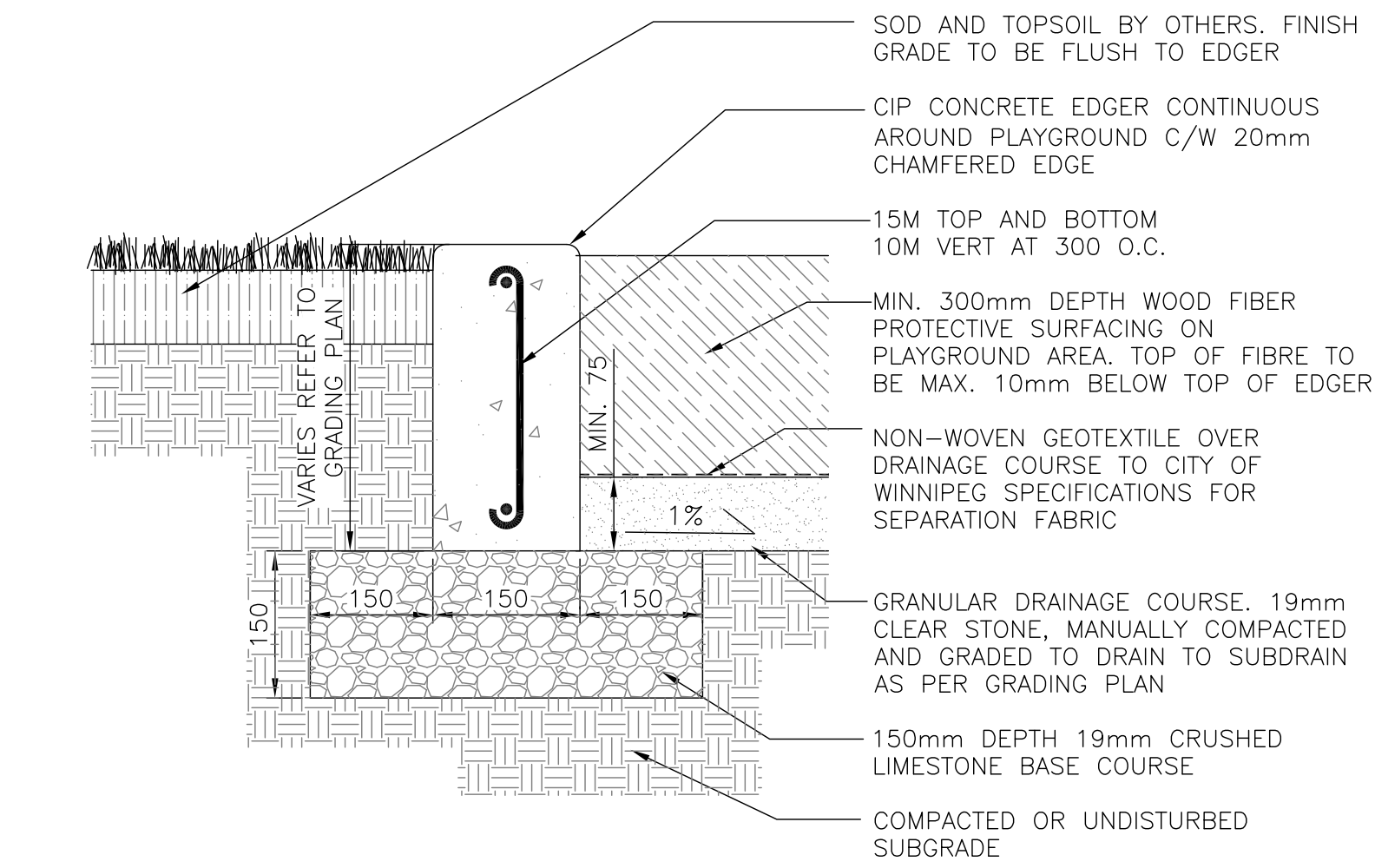


NOTE: ALL LINES AT 50mm THICKNESS UNLESS OTHERWISE STATED. MEASUREMENTS TAKEN FROM CENTER TO CENTER OF LINES.

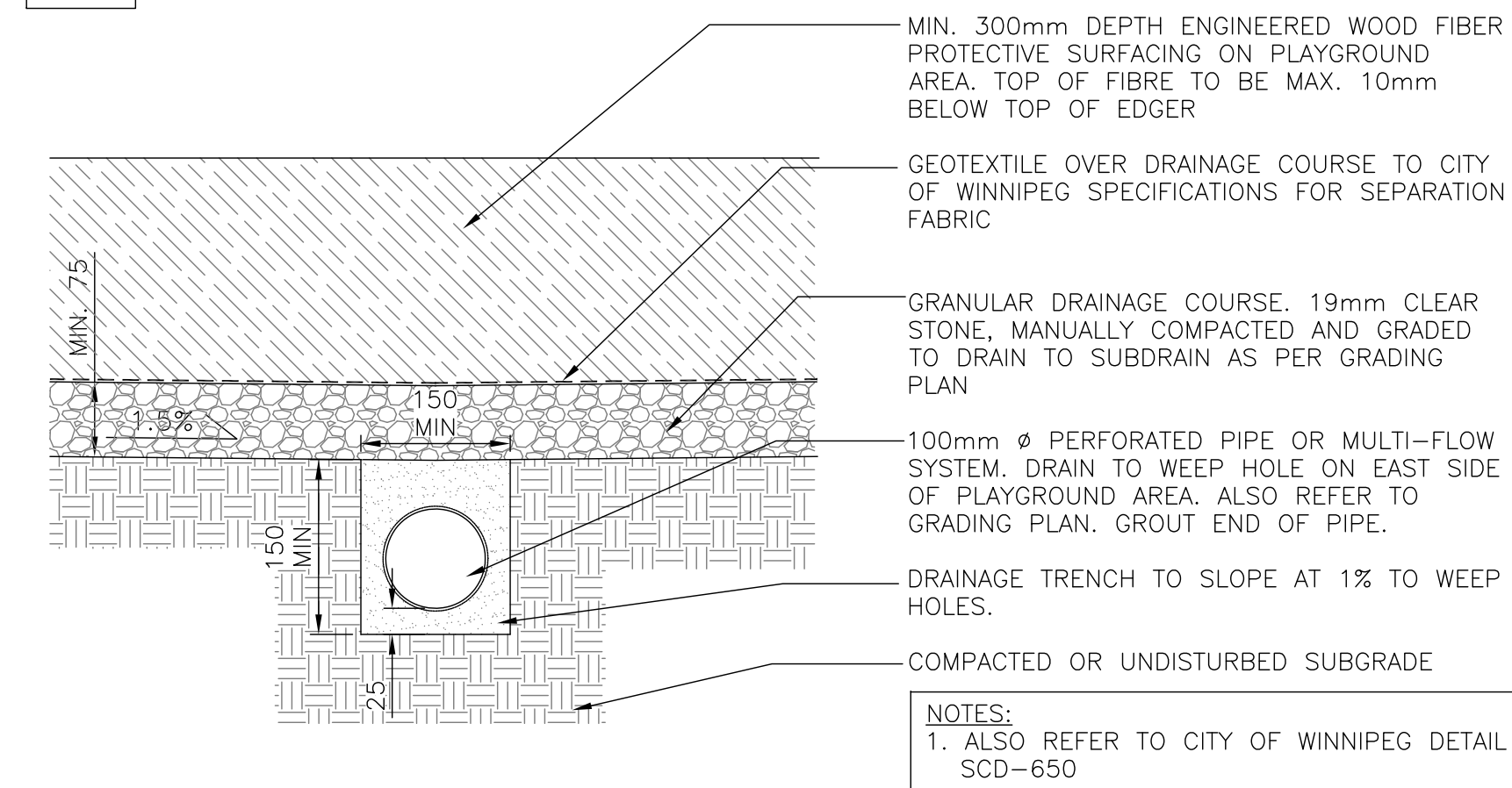
4 TENNIS / PICKLEBALL COURT LAYOUT
L3.2 N.T.S.



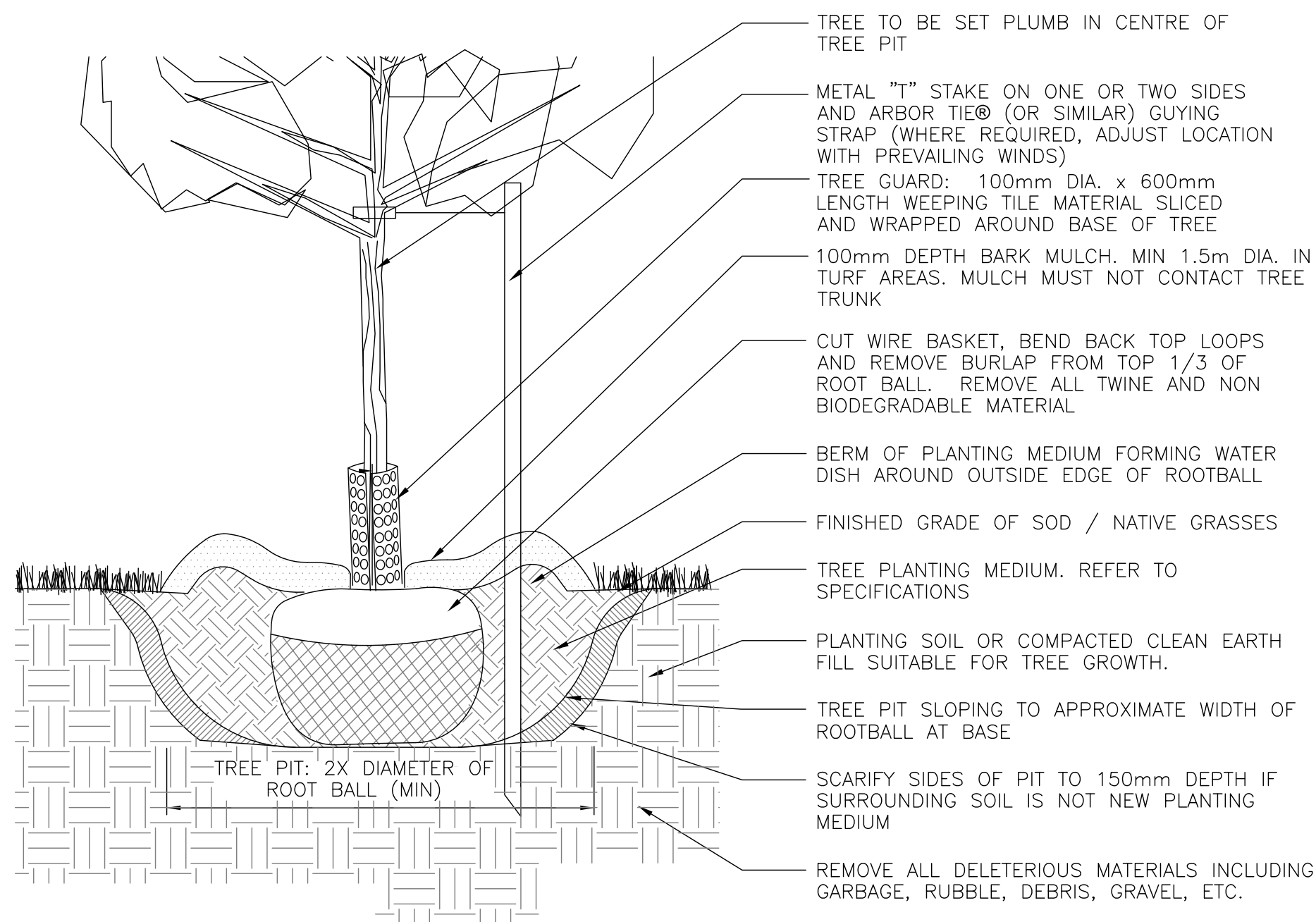
5 BASKETBALL COURT LAYOUT
L3.2 N.T.S.



6 PLAYGROUND CONCRETE EDGER
L3.2 N.T.S.

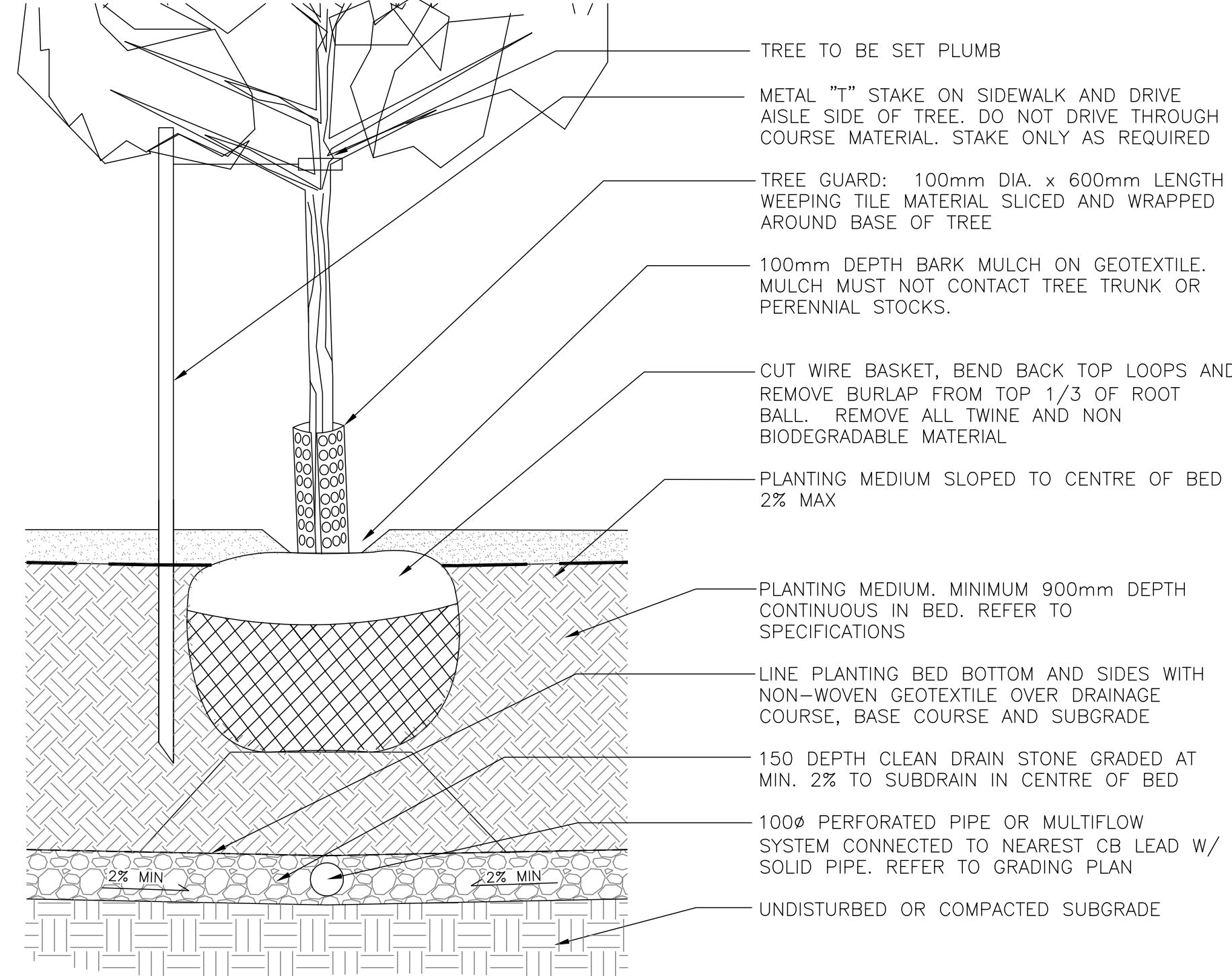


7 WOOD FIBER PROTECTIVE SURFACING AND DRAIN
L3.2 N.T.S.

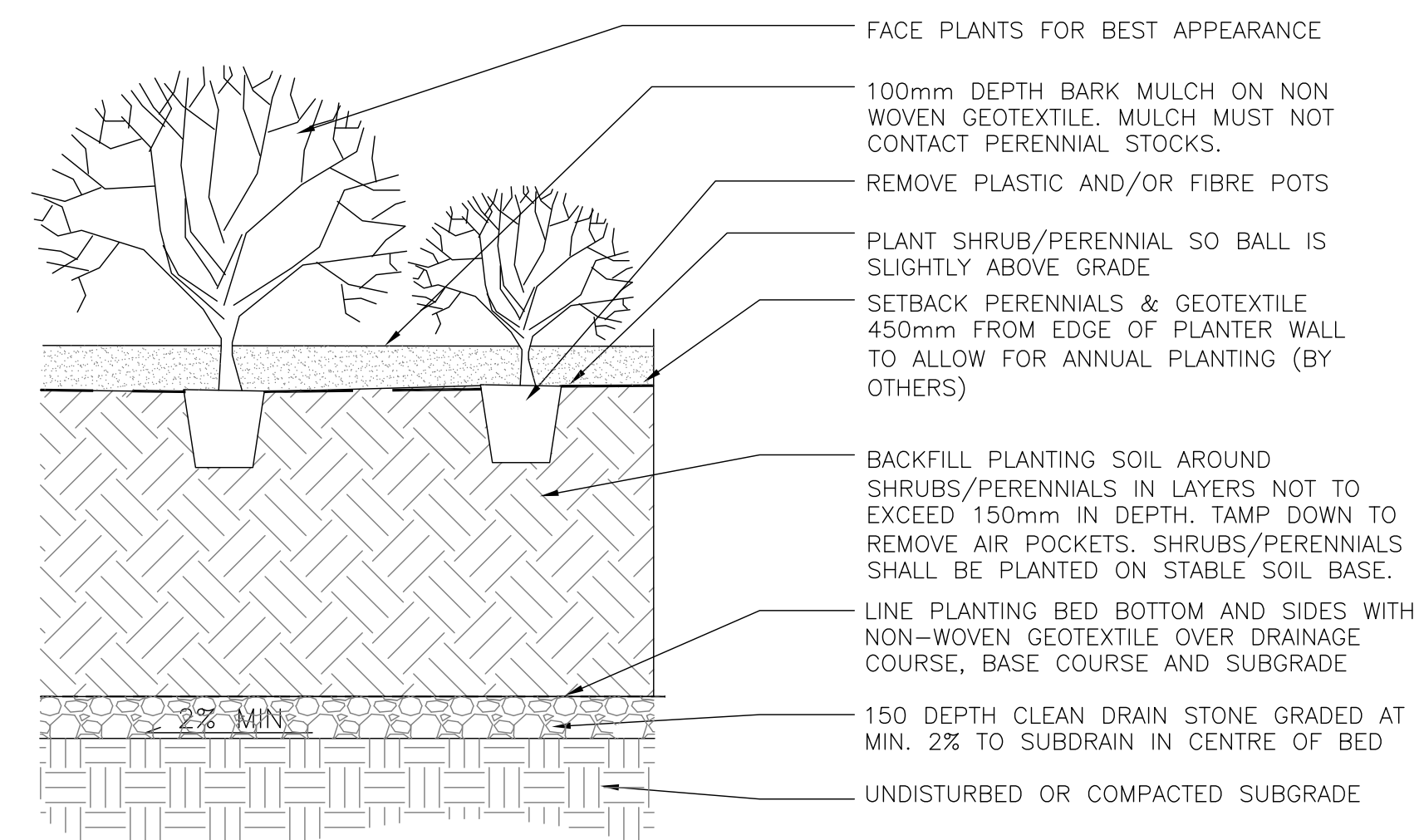


NOTES:
1. CONTINUOUS 900mm DEEP PLANTING SOIL WHEN TREE IS PLANTED IN PLANTING BED OR MULCH

8 DECIDUOUS TREE PLANTING - TYPICAL
L3.2 N.T.S.



9 DECIDUOUS TREE PLANTING IN 900mm DEPTH BED
L3.2 N.T.S.



NOTE:
1. 900mm DEPTH PLANTING SOIL REQUIRED FOR ENTIRE AREA OF MULCH BED

10 PERENNIAL PLANTING IN 900mm DEPTH BED
L3.2 N.T.S.

ISSUED FOR TENDER	MAR 12 2016	AH
- 99% CITY REVIEW	APR 23 2015	AH
No.	Revisions	Date By
Date	Scale	
10-12-14	NTS	
Designed By	Drawn By	Checked By
AH	GML	AH



Project Title
PARK CITY WEST COMMUNITY CENTRE
DETAILS
Sheet Title

Project No. 14-030 Drawing No. L3.2