

Drawing Title:

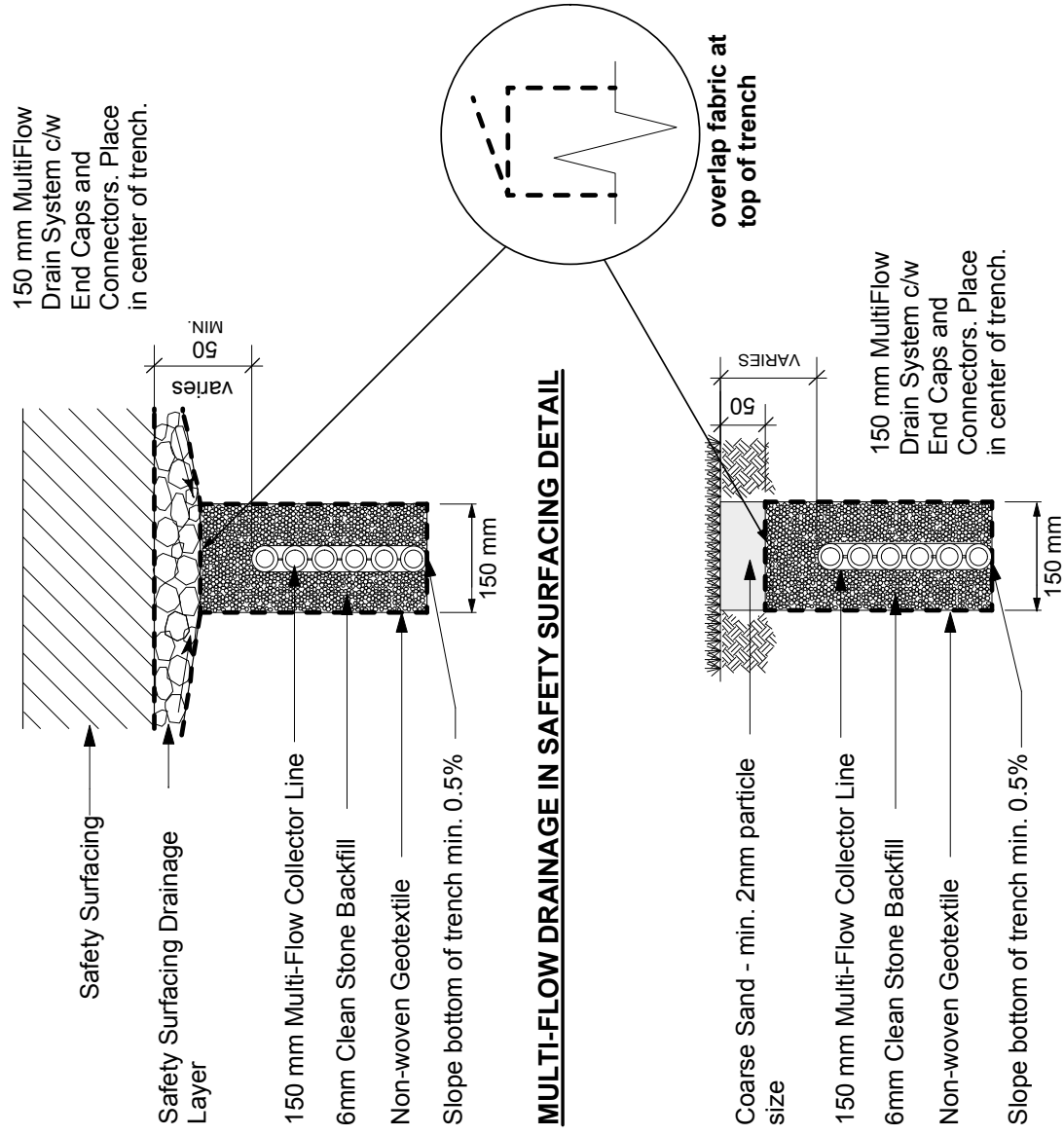
### Multi-Flow Drainage

Drawing No:

SCD-659

#### NOTES:

- Multi-flow connection to catch basin shall be as per Standard Specification CW 3120.3.5.



DIMENSIONS SHOWN ARE IN MILLIMETRES UNLESS OTHERWISE SPECIFIED


REVISION: 2

DATE: November 27, 2012

SCALE: NTS

DRAWN BY: SP

The City of Winnipeg  
 Planning, Property and Development Department  
 Planning and Land Use Division  
 Unit 15 - 30 Fort Street, Winnipeg, MB, R3C 4X5

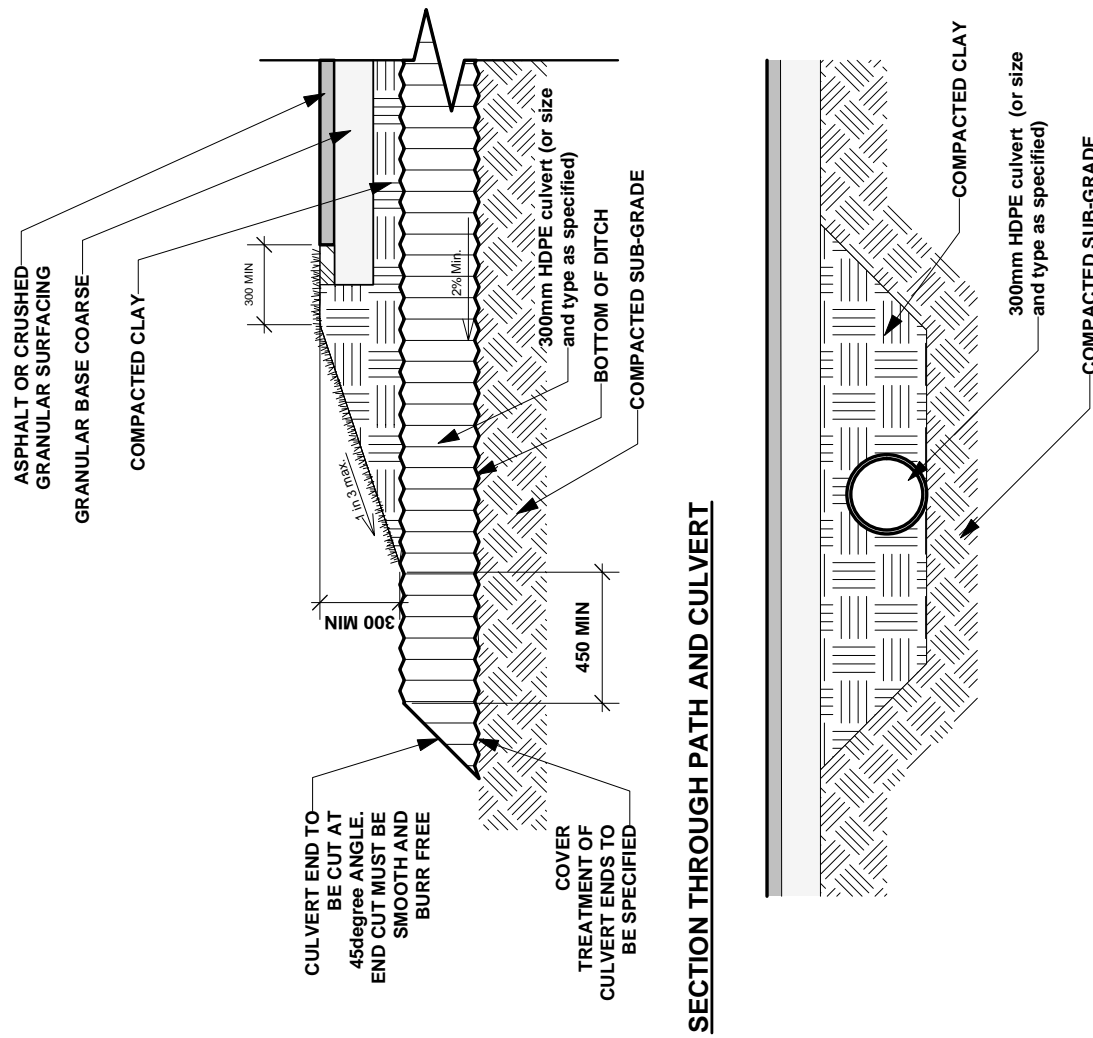


Drawing Title:

### CULVERT INSTALLATION UNDER WALKWAY

Drawing No:

SCD-612



DIMENSIONS SHOWN ARE IN MILLIMETRES UNLESS OTHERWISE SPECIFIED

REVISION: 1

DATE: January 12, 2012

SCALE: N.T.S.

DRAWN BY: SP

The City of Winnipeg  
 Planning, Property and Development Department  
 Planning and Land Use Division  
 Unit 15 - 30 Fort Street, Winnipeg, MB, R3C 4X5

