

**MATERIALS**

**COMPOSITE SLATS:**  
 - 89mm x 89mm COMPOSITE BOARDS  
 - CEDAR TONE FINISH

**METAL OPTIONS:**

- **BLACK POWDERCOATED** - (Metal suitably cleaned to remove any grease, wax etc. for proper paint bonding to occur. Base coat Zinc rich primer. Baked with a final thickness of paint between 5.8 mil - **Product # 52501085**

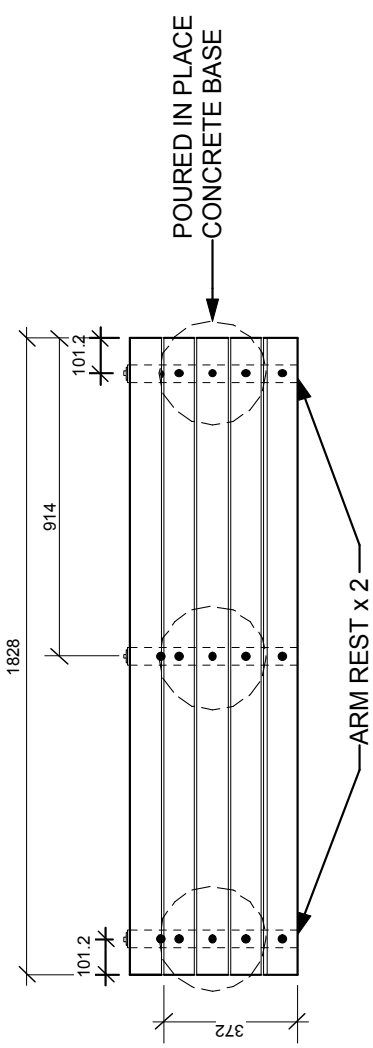
- **GALVANIZED** - **Product # 52501085GLV**

Drawing Title:

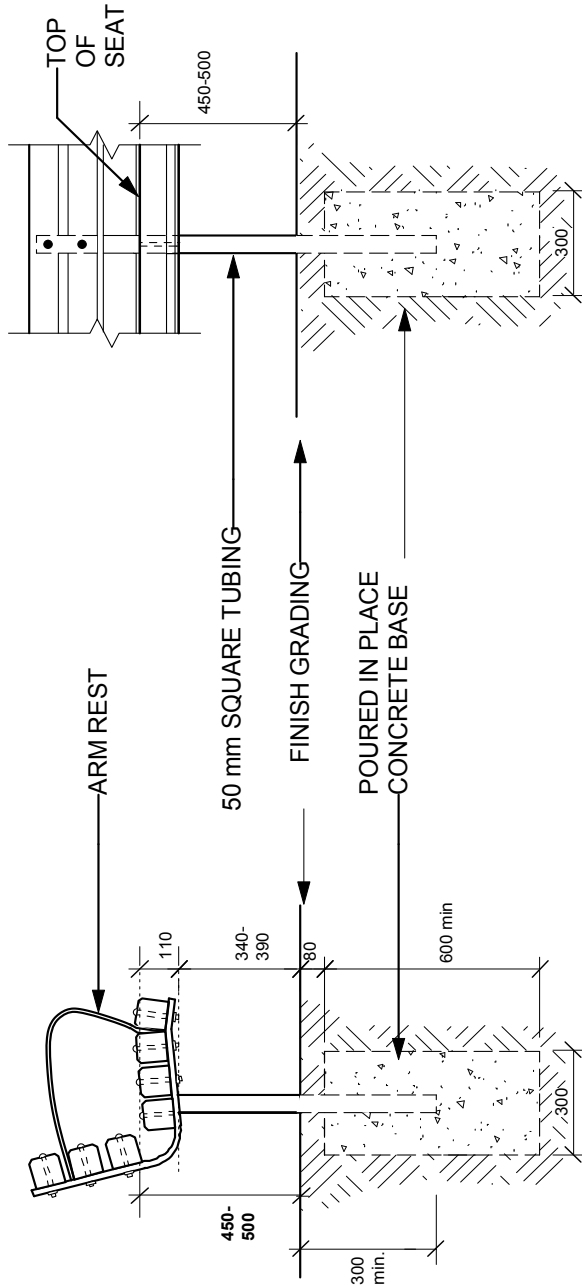
**TACHE BENCH COMPOSITE WITH ARMS**

Drawing No:

**SCD-121A**



**PLAN VIEW**




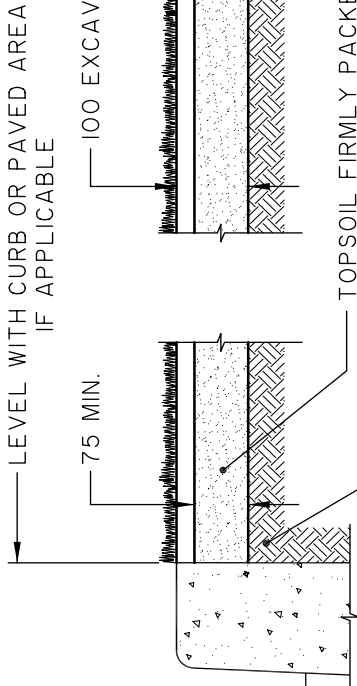
**SIDE ELEVATION**

**FRONT ELEVATION**

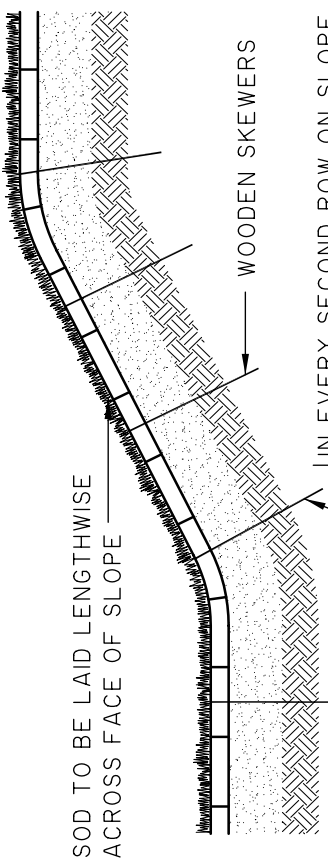
DIMENSIONS SHOWN ARE IN MILLIMETRES UNLESS OTHERWISE SPECIFIED

REVISION: 2  
 DATE: December 20, 2012  
 SCALE: NTS  
 DRAWN BY: SP

The City of Winnipeg  
 Planning, Property and Development Department  
 Planning and Land Use Division  
 Unit 15 - 30 Fort Street, Winnipeg, MB, R3C 4X5

**TYPICAL SECTION THROUGH SODDED AREA.**

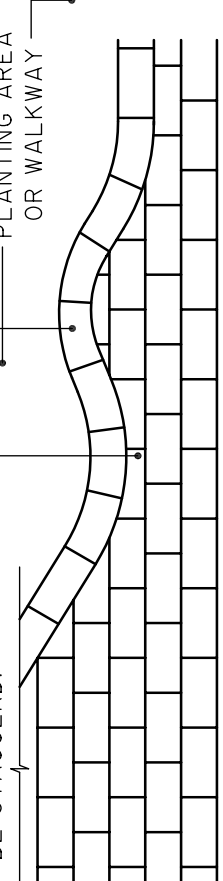


**TYPICAL SECTION THROUGH SODDED SLOPE - 1:3 OR STEEPER.**

IN EVERY SECOND ROW ON SLOPE AND AT THE BASE OF THE SLOPE EACH PIECE OF SOD TO BE PEGGED WITH TWO MINIMUM 250 mm LONG WOODEN SKEWERS DRIVEN IN BELOW LAWN LEVEL. ON SLOPE 1:2 OR STEEPER, EACH PIECE OF SOD IN EVERY ROW SHALL BE PEGGED.

SOD TO BE LAID CLOSELY, PACKED TOGETHER. JOINTS IN ADJACENT ROWS SHALL BE STAGGERED.

FULL ROW OF SOD TO BE USED ON PERIMETER OF SODDED AREA.



**TYPICAL SOD LAYOUT.**

DIMENSIONS ARE IN MILLIMETRES



**THE CITY OF WINNIPEG**  
 PUBLIC WORKS DEPARTMENT

Reference Spec. No.  
 CW-3510

No.	Date	Description	By
2	5/05	Top Soil & Excavation Dimensions	twh
1	12/04	Top Soil & Excavation Dimensions	twh

**SODDING DETAILS**

Scale: **N.T.S.**

Designed By: D.R.K.      Drawn By: A.R.

Checked By: D.R.K.      Date: 05-05-04

Approved: SURFACE WORKS COMMITTEE

Drawing No. **SD-243**