

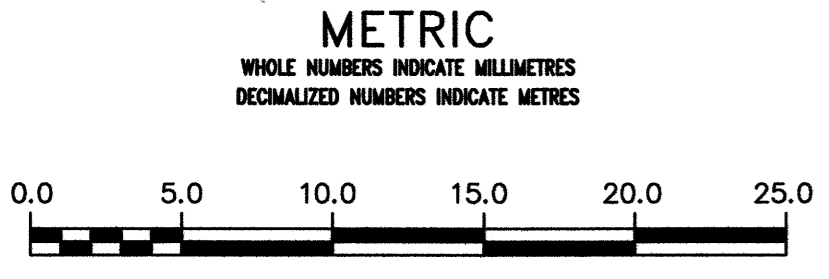
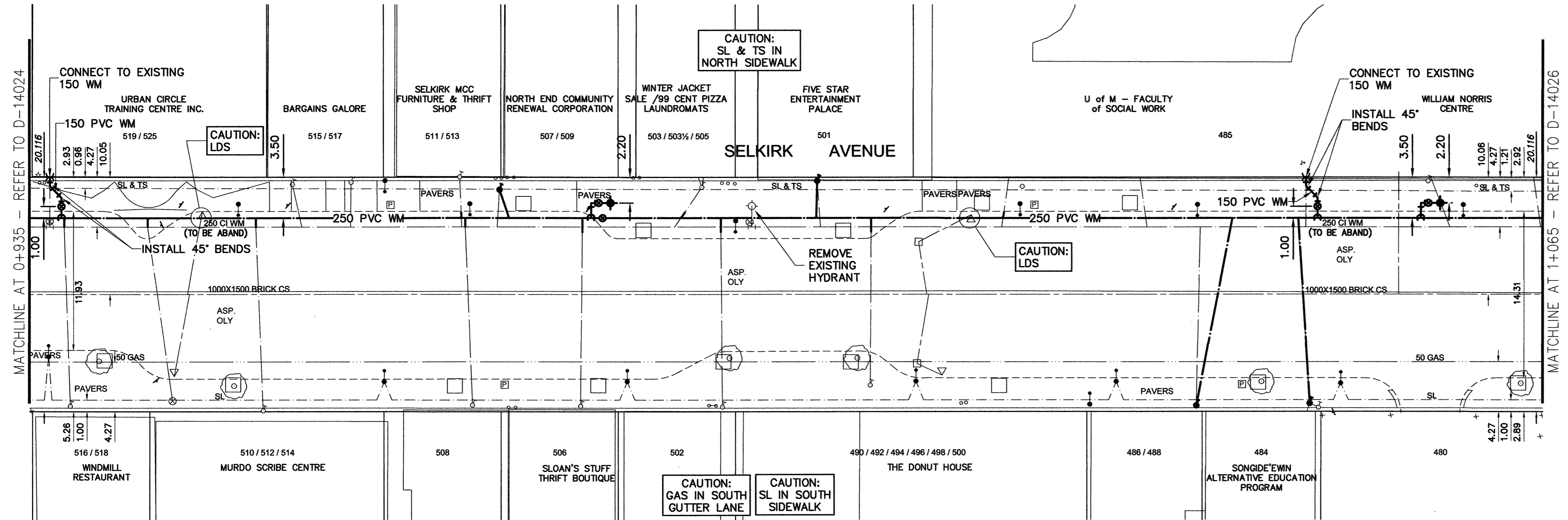
NOTE: CHAINAGES SHOWN ARE ALONG N. R. OF SELKIRK AVENUE



ADDRESS	SIZE (mm) MATERIAL (STREET)	SIZE (mm) MATERIAL (PROP.)	SHORT & LONG MEASUREMENT	CORPORATION LOCATION	REMARKS
519 SELKIRK AV	150 PVC	-	31.5 EEL OF ANDREWS	OPP S/C	FIRE AND DOMESTIC
518 SELKIRK AV	20 CU	20	32.9 EEL OF ANDREWS	OPP S/C	
515 SELKIRK AV	20 CU	20	52.4 EEL OF ANDREWS	0.9 E/S/C	REVERSE TAPPED
513 SELKIRK AV	25 CU	25	67.1 EEL OF ANDREWS	OPP S/C	
512 SELKIRK AV	16 CU	20	49.4 EEL OF ANDREWS	OPP S/C	
510 SELKIRK AV	38 CU	38	42.1 EEL OF ANDREWS	2.0 W OF S/C	
509 SELKIRK AV	16 LEAD	12	70.1 EEL ANDREWS ST	OPP S/C	SAME AS 507
508 SELKIRK AV	20 CU	20	67.4 EEL ANDREWS	OPP S/C	
507 SELKIRK AV	16 LEAD	12	70.1 EEL ANDREWS ST	OPP S/C	RENEW TO PROPERTY AS 25mm
506 SELKIRK AV	20 CU	12	77.7 EEL OF ANDREWS	0.3 W OF S/C	
505 SELKIRK AV	-	12	88.1 EEL OF ANDREWS	2.7 W OF S/C	BRANCH SERV WITH 503
503 SELKIRK AV	-	12	88.1 EEL ANDREWS	2.7 W S/C	BRANCH SERV WITH 505
502 SELKIRK AV	20 CU	12	89.9 EEL OF ANDREWS	0.6 W S/C	
501 SELKIRK AV	25 LEAD	12	83.2 W/L OF POWERS	OPP S/C	RENEW TO PROPERTY AS 25mm
500 SELKIRK AV	20 CU	20	11.9 3" ENPL	0.3 W OF S/C	REVERSE TAPPED. SC PREVIOUSLY REPLACED
499 SELKIRK AV	12 LEAD	12	67.1 W/L OF POWERS	0.6 W OF S/C	ADDRESS DOES NOT EXIST
488 SELKIRK AV	16 LEAD	20	51.2 W/L POWERS ST	0.6 E CS	RENEW TO PROPERTY AS 25mm
486 SELKIRK AV	16 LEAD	20	51.2 W/L POWERS ST	0.6 E CS	SAME AS 488 SELKIRK
485 SELKIRK AV	150 PVC	-	41.5 W/L POWERS	OPP S/C	FIRE AND DOMESTIC
484 SELKIRK AV	12 LEAD	12	41.1 W/L POWERS ST	1.2 W CS	RENEW TO PROPERTY AS 25mm
482 SELKIRK AV	-	12	41.1 W/L POWERS ST	1.2 W CS	ABANDONED - EMPTY LOT
480 SELKIRK AV	-	-	41.1 W/L POWERS ST	0.6 W CS	ABANDONED - EMPTY LOT

NOTE: REPLACE ALL EXISTING LEAD SERVICES FROM THE PROPOSED WATER MAIN TO PROPERTY LINE.
 RECONNECT ALL OTHER SERVICES UNLESS NOTED.
 LOCATION OF WATER SERVICES SHOWN ON DRAWINGS ARE APPROXIMATE.
 THE CONTRACTOR SHALL FIELD LOCATE ALL WATER SERVICES PRIOR TO CONSTRUCTION.

ALL VALUES TO BE COUNTER-CLOCKWISE TO CLOSE (RED OPERATING NUT)



WARNING
 IF POWER EQUIPMENT OR EXPLOSIVES ARE TO BE USED FOR EXCAVATION ON THIS PROJECT THE CONTRACTOR MUST:
 1) NOTIFY THE GAS COMPANY OF THE PROPOSED LOCATION OF EXCAVATION.
 2) TAKE PRECAUTION TO AVOID DAMAGE TO GAS COMPANY INSTALLATIONS.
 SEE PROVINCIAL REGULATION 21072 FOR DETAILS

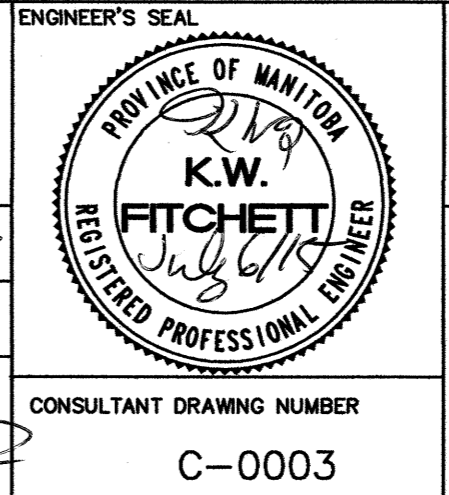
LOCATION APPROVED UNDERGROUND STRUCTURES
 SUPV. U/G STRUCTURES COMMITTEE DATE
 NOTE:
 LOCATION OF UNDERGROUND STRUCTURES AS SHOWN ARE BASED ON THE BEST INFORMATION AVAILABLE BUT NO GUARANTEE IS GIVEN THAT ALL EXISTING UTILITIES ARE SHOWN OR THAT THE GIVEN LOCATIONS ARE EXACT. CONFIRMATION OF EXISTENCE AND EXACT LOCATION OF ALL SERVICES MUST BE OBTAINED FROM THE INDIVIDUAL UTILITIES BEFORE PROCEEDING WITH CONSTRUCTION.

B.M. 26-020
 ELEV. 232.072m
 N.W. Cor. Selkirk Ave. and Powers St. Brass Plug in Conc. Pile, 2.4m E. of N.E. Selkirk Ave. and 0.3m N. of Selkirk Ave.

NO.	REVISIONS	DATE	BY
0	ISSUED FOR TENDER	15/07/08	KWF
A	ISSUED FOR REVIEW	15/06/23	GSK

AECOM

DESIGNED BY: GK
 CHECKED BY: [Signature]
 DRAWN BY: JP
 APPROVED BY: [Signature]
 SCALE: HORIZONTAL 1:250, VERTICAL 1:50
 DATE: 2015 07 06



THE CITY OF WINNIPEG
 WATER AND WASTE DEPARTMENT
 ENGINEERING DIVISION

SELKIRK AVENUE
 ARLINGTON STREET TO SALTER STREET
 PAVEMENT RECONSTRUCTION

2015 WATER MAIN RENEWAL CONTRACT A-1 MCGREGOR ST TO SALTER ST
 SELKIRK AVENUE
 29.9m EAST OF ANDREWS ST. TO 21.2m WEST OF POWER ST.

SHEET 4 OF 6
 CITY DRAWING NUMBER D-14025

ENGINEER'S SEAL: C-0003
 CONSULTANT DRAWING NUMBER: C-0003