

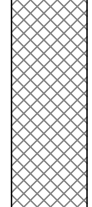
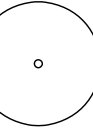


LEGEND

-  REMOVE & DISPOSE OF GRAVEL PATHWAY
-  REMOVE AND DISPOSE OF EXISTING SOD
-  REMOVE AND DISPOSE OF EXISTING PEA GRAVEL AND SAND PLAY SURFACE
-  EXISTING DECIDUOUS TREE TO REMAIN

GENERAL NOTES

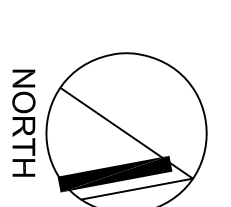
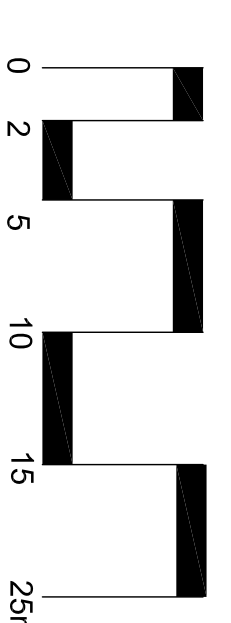
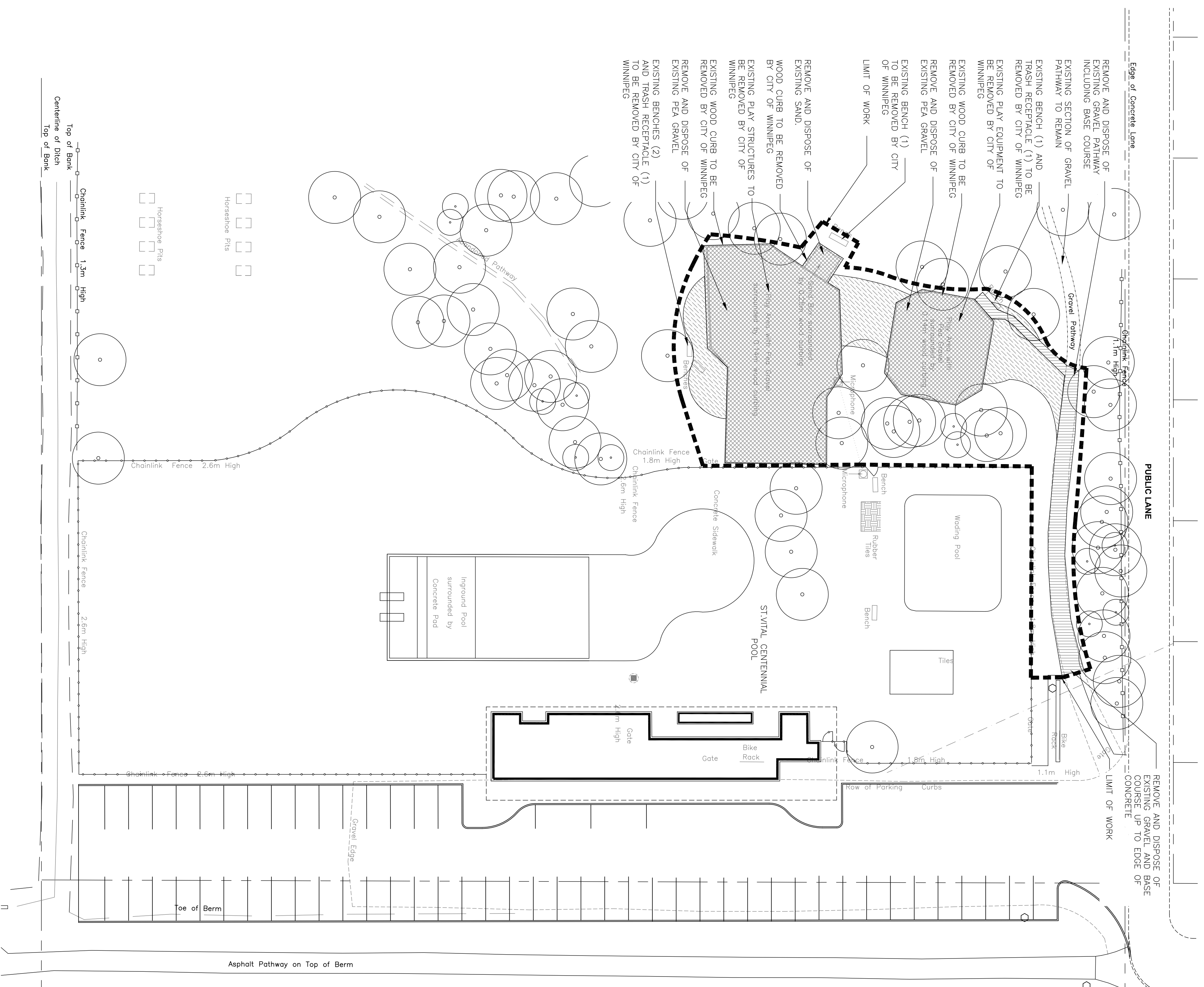
1. CONTRACTOR IS RESPONSIBLE FOR ALL EXCAVATIONS, REMOVALS, DISPOSALS, AND ROUGH GRADING AS REQUIRED TO CONSTRUCT ALL WORKS AS SHOWN ON ALL PLANS, DETAILS AND SPECIFICATIONS.
2. CITY OF WINNIPEG TO REMOVE EXISTING TIMBER EDGERS, PLAY STRUCTURES AND SITE UTILITIES INCLUDING SWINGS SET, SPRING RIDER, MICROPHONE, PLAY STRUCTURE AND CONFORMANCE REMOVALS WITH THE CITY OF WINNIPEG. CONTACT ANDY FARBER (204)794-4276.
3. CONTRACTOR TO COORDINATE REMOVALS WITH THE CITY OF WINNIPEG. CONTACT ANDY FARBER (204)794-4276.
4. LIMIT OF WORK IS APPROXIMATE. CONTRACTOR TO ENSURE THAT ALL AREAS DAMAGED DUE TO CONSTRUCTION ACTIVITIES EITHER WITHIN LIMIT OF WORK OR OUTSIDE ARE TO BE RESTORED AT CONTRACTOR'S OWN COST.
5. CONTRACTOR TO CONFIRM ALL DIMENSIONS AND REPORT ANY DISCREPANCIES TO CONTRACT ADMINISTRATOR PRIOR TO REMOVALS.
6. REFER ALSO TO WRITTEN SPECIFICATIONS.
7. SUBMIT EXISTING PAYMENTS AND CURBS TO ENSURE CLEAN EDGE ON SMOOTHSIDE AND CURBS TO BE REPAIRED TO CITY OF WINNIPEG STANDARDS.
8. LOCATION OF ALL UTILITIES SHOWN FOR ILLUSTRATION ONLY. CONTRACTOR MUST CONTACT ALL UTILITIES REGARDING RULES FOR WORKING IN THE AREA OF THE UTILITIES PRIOR TO COMMENCEMENT OF ANY WORK. CONTRACTOR MUST CONFIRM LOCATION OF ALL UTILITIES PRIOR TO CONSTRUCTION.
9. ALL EXISTING TREES, SIDEWALKS, CURBS, FENCING, SOD AND PAVING TO REMAIN ARE TO BE PROTECTED DURING CONSTRUCTION TO BE REPAIRED TO CITY OF WINNIPEG STANDARDS.
10. FILL AREAS TO BE REPAIRED TO DESIGN SURFACE WITH COMPACTED FILL (SUITABLE TO SURFACE FINISH), FOR SOFTENED/PAVED AREAS USE COMPACTED CLEAN EARTH FILL SUITABLE FOR PLANT GROWTH, FOR PAVED AREAS USE COMPACTED GRANULAR BASE. REFER TO SPECIFICATIONS.
11. ALL DIMENSIONS ARE IN METRIC UNLESS OTHERWISE NOTED.
12. ALL ITEMS TO BE REMOVED MUST BE DISPOSED OF LEGALLY OFFSITE.
13. ALL TREE AREAS TO REMAIN TO BE PROTECTED IN ACCORDANCE WITH CITY OF WINNIPEG SPECIFICATIONS.



LOCATION PLAN
SCALE: NTS

DRAWING LIST

- L1.0 REMOVALS PLAN
- L1.1 LAYOUT PLAN
- L1.2 GRADING PLAN
- L2.0 DETAILS



Project Title
**KING GEORGE V
PLAYGROUND UPGRADES**

Client
**MCGOWAN RUSSELL
CITY OF WINNIPEG**

ISSUED FOR REVIEW	DATE
90% CITY REVIEW	JULY 18 2015 AM
100% CITY REVIEW	JULY 17 2015 AM
100% CITY REVIEW	JUNE 17 2015 AM

No.	Date	Scale	Revisions	By
08-06-15	1:350			

Designed By: AH
Drawn By: OL
Checked By: AH

Sheet Title
REMOVALS PLAN

Project No: 15-031
Drawing No: L1.0