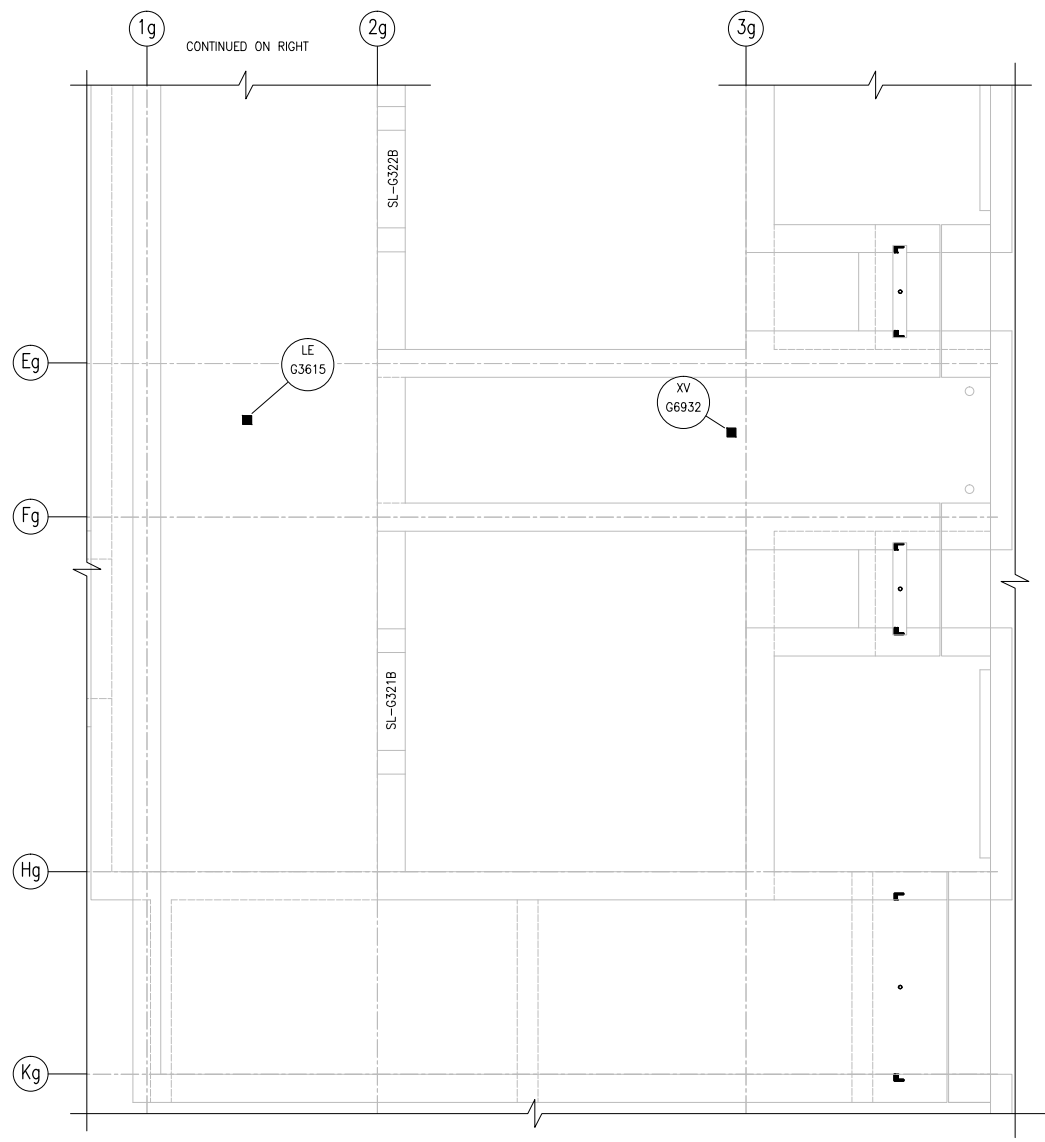
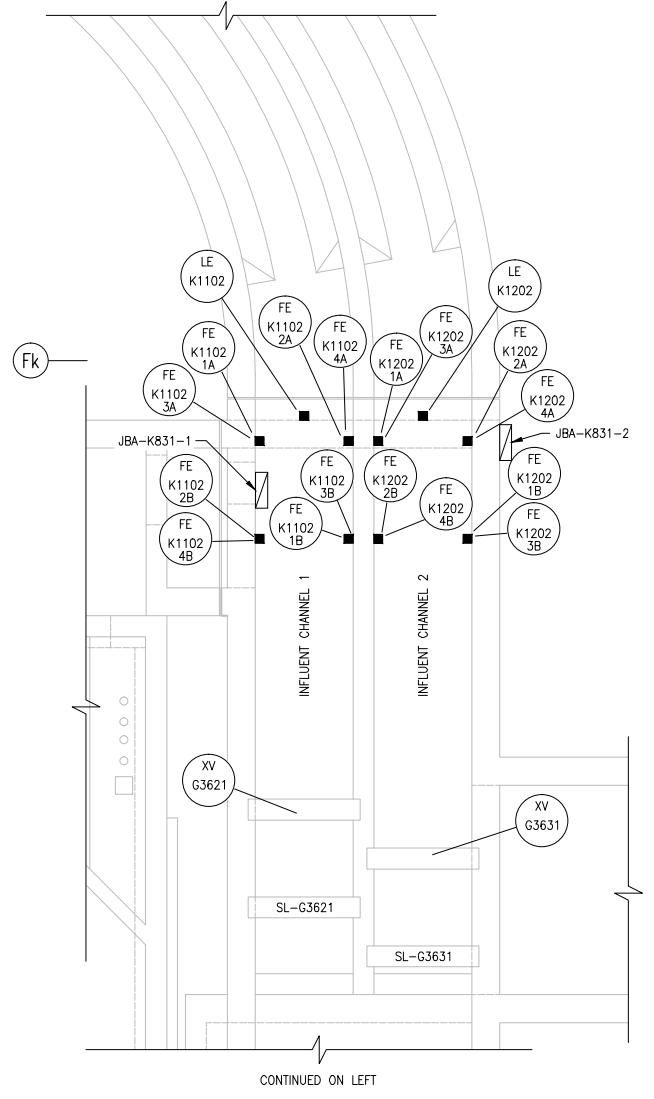


A1 SIZE - 594mm x 841mm



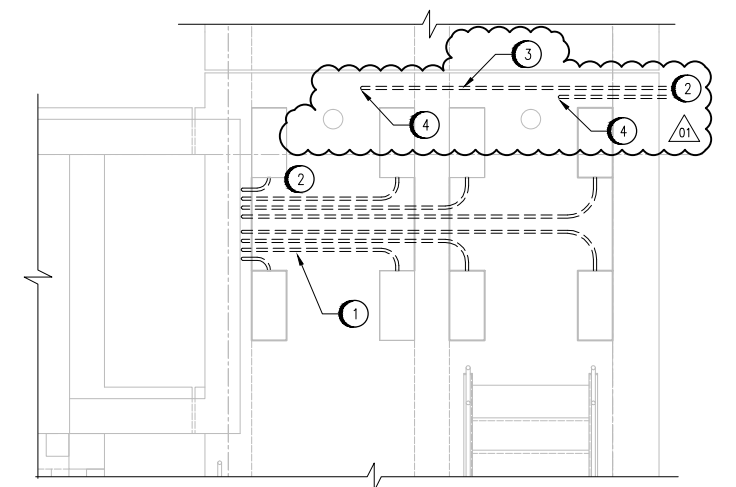
GROUND LEVEL
1 : 50



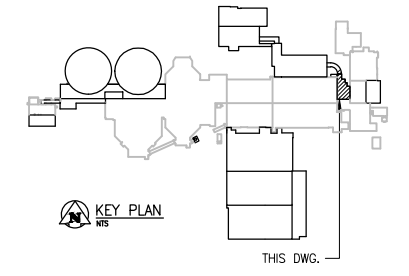
SPECIFIC NOTES:

- 1 EMBED RIGID 27mm PVC CONDUITS INTO THE CONCRETE FOR ROUTING OF FLOW SENSOR CABLES. CONDUIT RUN LOCATIONS SHOWN ARE APPROXIMATE TO ILLUSTRATE GENERAL CONCEPT. COORDINATE EXACT LOCATION AND ROUTING ON SITE, WITH GENERAL CONTRACTOR. SLOPE CONDUITS TOWARDS CHANNEL ENTRY LOCATIONS.
- 2 STUB CONDUITS OUT, A MINIMUM OF 300mm TO ALLOW FOR CONNECTION AND CONDUIT CONTINUATION.
- 3 EMBED RIGID 27mm PVC CONDUITS IN THE CONCRETE FOR ROUTING OF LEVEL SENSOR CABLES. CONDUIT RUN LOCATIONS SHOWN ARE APPROXIMATE TO ILLUSTRATE GENERAL CONCEPT. COORDINATE EXACT LOCATION AND ROUTING ON SITE, WITH GENERAL CONTRACTOR. SLOPE CONDUITS TOWARDS CHANNEL EXTERIOR WALL.
- 4 STUB CONDUITS OUT THROUGH TOP OF CHANNEL, A MINIMUM OF 300mm TO ALLOW FOR CONNECTION AND CONDUIT CONTINUATION. STUB UP LOCATION IS TO BE 150mm FROM EDGE OF FLANGE.

PROVISION OF INSTRUMENTS IS NOT WITHIN THE SCOPE OF BID OPP. 601-2015

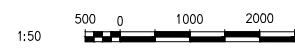


EMBEDDED CONDUIT DETAIL
1 : 30



LAST SAVE: 2015/09/03 - 1:26pm
PATH: c:\pw_workdir\ch2mhill_wsg\sb01301\03\6208\1-0102-AGAD-6011.dwg

REFERENCE DRAWINGS	DESCRIPTION



NO.	REVISIONS	DATE	DESIGN	CHECK
01	RE-ISSUED FOR TENDER	09/2015	EFB	TMC
00	ISSUED FOR TENDER	08/2015	EFB	TMC

CH2MHILL	
DESIGNED BY: E. BOHNCKE	CHECKED BY: T. CHURCH
DRAWN BY: M.J. PERSSON	APPROVED BY: T. CHURCH
SCALE: AS SHOWN	ISSUED FOR CONSTRUCTION BY: T. TURZAK
DATE: 2015/04/17	DATE: 2015/09/03
CONSULTANT NO.: 474248	

ENGINEER'S SEAL
ORIGINAL DRAWING
SEALED BY:
T. M. CHURCH
SNC-LAVALIN
MEMBER # 32682
2015/08/17
REV. 00

THE CITY OF WINNIPEG
WATER AND WASTE DEPARTMENT

SOUTH END WATER POLLUTION CONTROL CENTRE
SEWPC UPGRADING/EXPANSION PROJECT
AUTOMATION - INSTRUMENT LOCATION PLAN
HEADWORKS AREA - GRIT TANKS 1 AND 2
GROUND LEVEL

CITY DRAWING NUMBER: 1-0102-AGAD-G011 | SHEET: 001 | REV: 01 | SIZE: A1