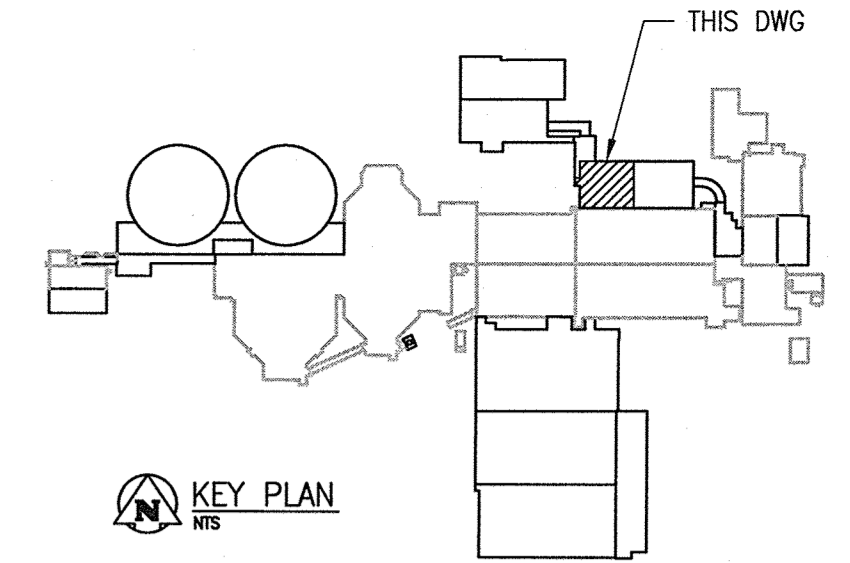
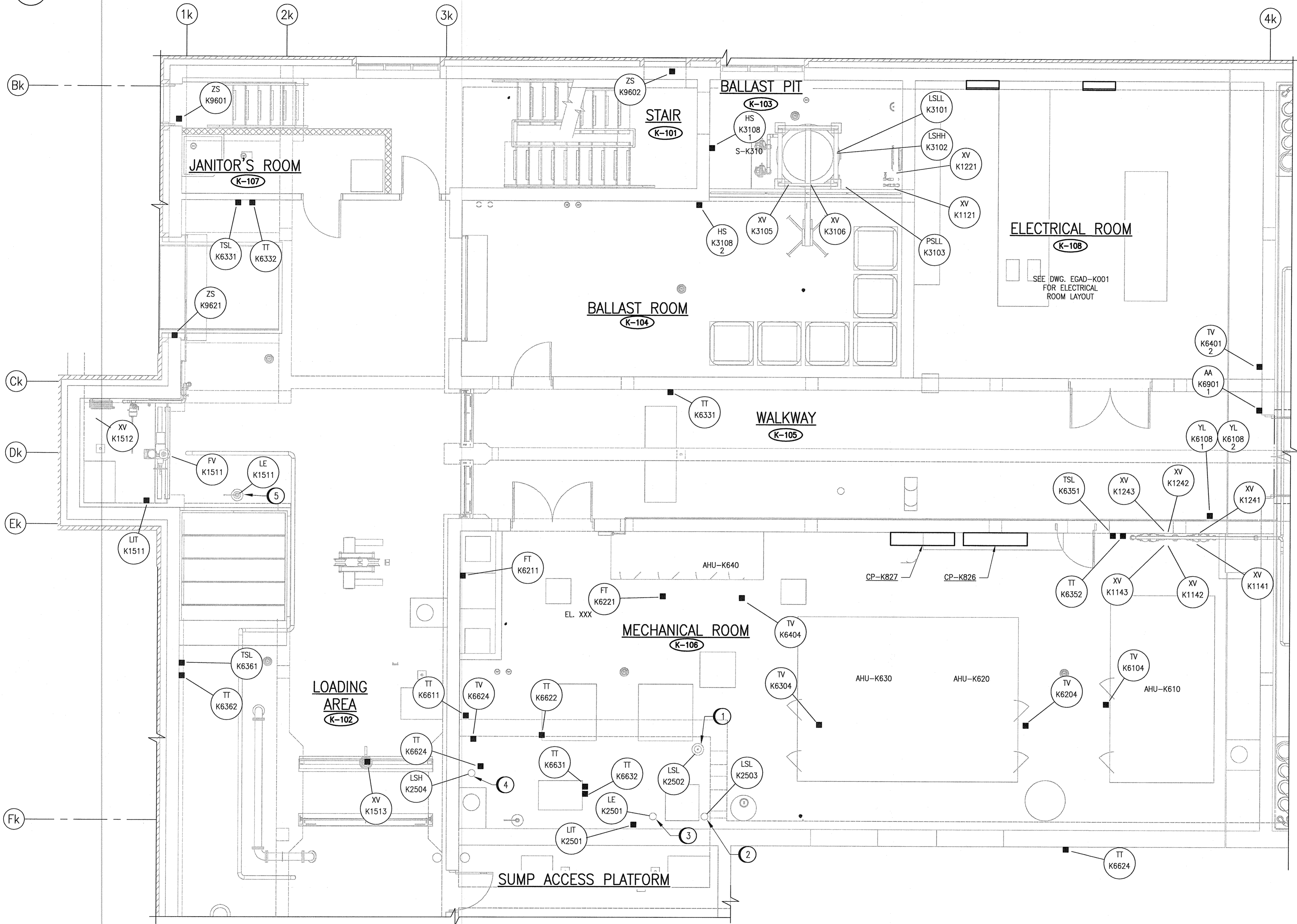
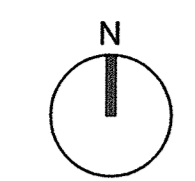


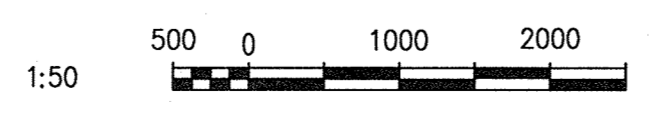
A1 SIZE - 594mm x 841mm

LAST SAVE: 2015/09/09 - 12:51pm
 PATH: C:\pwworkdir\CH2MHILL\wg\mww012334\d0358673\1-0102-AGAD-K002.dwg



- SPECIFIC NOTES:**
- 1 CENTERLINE OF PIPE LOCATED 75mm FROM BOTH EDGES OF WALLS BELOW. SEE DETAIL A ON ADTL-K001.
 - 2 CENTERLINE OF PIPE LOCATED 75mm FROM EDGE OF WALL BELOW AND TO AVOID PIPE ENTRY POINTS INTO TANK. SEE DETAIL A ON ADTL-K001.
 - 3 CENTERLINE OF PIPE LOCATED 300mm FROM POINT WHERE BOTTOM OF PIT STARTS SLOPING AND CENTRED BETWEEN THE TWO SLUDGE PUMP INTAKE LINES BELOW. SEE DETAIL B ON ADTL-K001.
 - 4 CENTERLINE LOCATED 300mm FROM EDGE OF WALL. SEE DETAIL A ON ADTL-K001.
 - 5 CENTERLINE OF PIPE LOCATED 300mm FROM EDGE OF WALL. SEE DETAIL B ON ADTL-K001.

PLAN VIEW AT EL. 236.345
 1 : 50



APECM
 Certificate of Authorization
 SNC-Lavalin Inc.
 No. 4489

NO.	REVISIONS	DATE	DESIGN	CHECK
00	ISSUED FOR ADDENDUM NO. 2	02/2015	EFB	TMC

CH2MHILL.
 SNC-Lavalin
 DESIGNED BY: E. BOHNCKE
 DRAWN BY: M.J. PERSSON
 SCALE: 1:50
 DATE: 2015/01/22
 CONSULTANT NO.: 474248

CHECKED BY: T. CHURCH
 APPROVED BY: T. CHURCH
 ISSUED FOR CONSTRUCTION BY: T. CHURCH
 DATE: 2015/09/09

ENGINEER'S SEAL

 T. Church
 Member 32682
 Sep 1, 2015
 Rev. 00

THE CITY OF WINNIPEG
 WATER AND WASTE DEPARTMENT

Winnipeg

SOUTH END WATER POLLUTION CONTROL CENTRE
 SEWPCC UPGRADING/EXPANSION PROJECT
 AUTOMATION - INSTRUMENT LOCATION PLAN
 HIGH RATE CLARIFICATION
 GROUND FLOOR WEST

CITY DRAWING NUMBER: 1-0102-AGAD-K002
 SHEET: 001
 REV.: 00
 SIZE: A1

REFERENCE DRAWINGS	DESCRIPTION