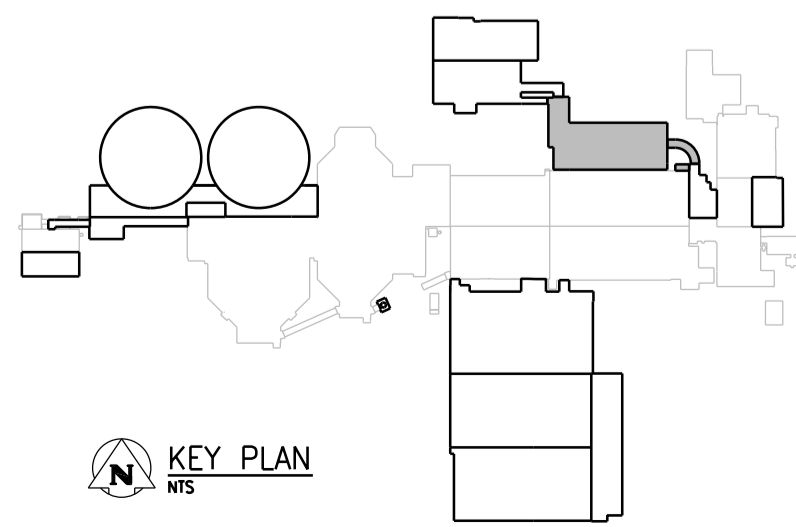


BASEMENT PLAN
 1:100

- NOTES:**
- REFER TO DUCT SCHEDULE FOR MATERIAL
 - ALL EXHAUST ODOROUS DUCTWORK FROM WASTE SLUDGE SUMP TO DISCHARGE DAMPER OF FAN EF-K611/K612 ON ROOF ARE TO BE STAINLESS STEEL
 - FIELD RUN REFRIGERANT LINES FROM ACC UNITS IN ELECTRICAL ROOM TO CONDENSERS IN BASEMENT SERVICE GALLERY
 - V513 BUTTERFLY SHUT-OFF VALVES - SERIES 30/31, BRAY CONTROLS WITH CHAINWHEEL OPERATOR EXTENSION.



APEGM
 Certificate of Authorization
 CH2M HILL Canada Ltd.
 No. 1441

00	ISSUED FOR ADDENDUM NO. 2	09/2015	K.F. J.C.
NO.	REVISIONS	DATE	DESIGN CHECK

CH2MHILL
 SNC-LAVALIN

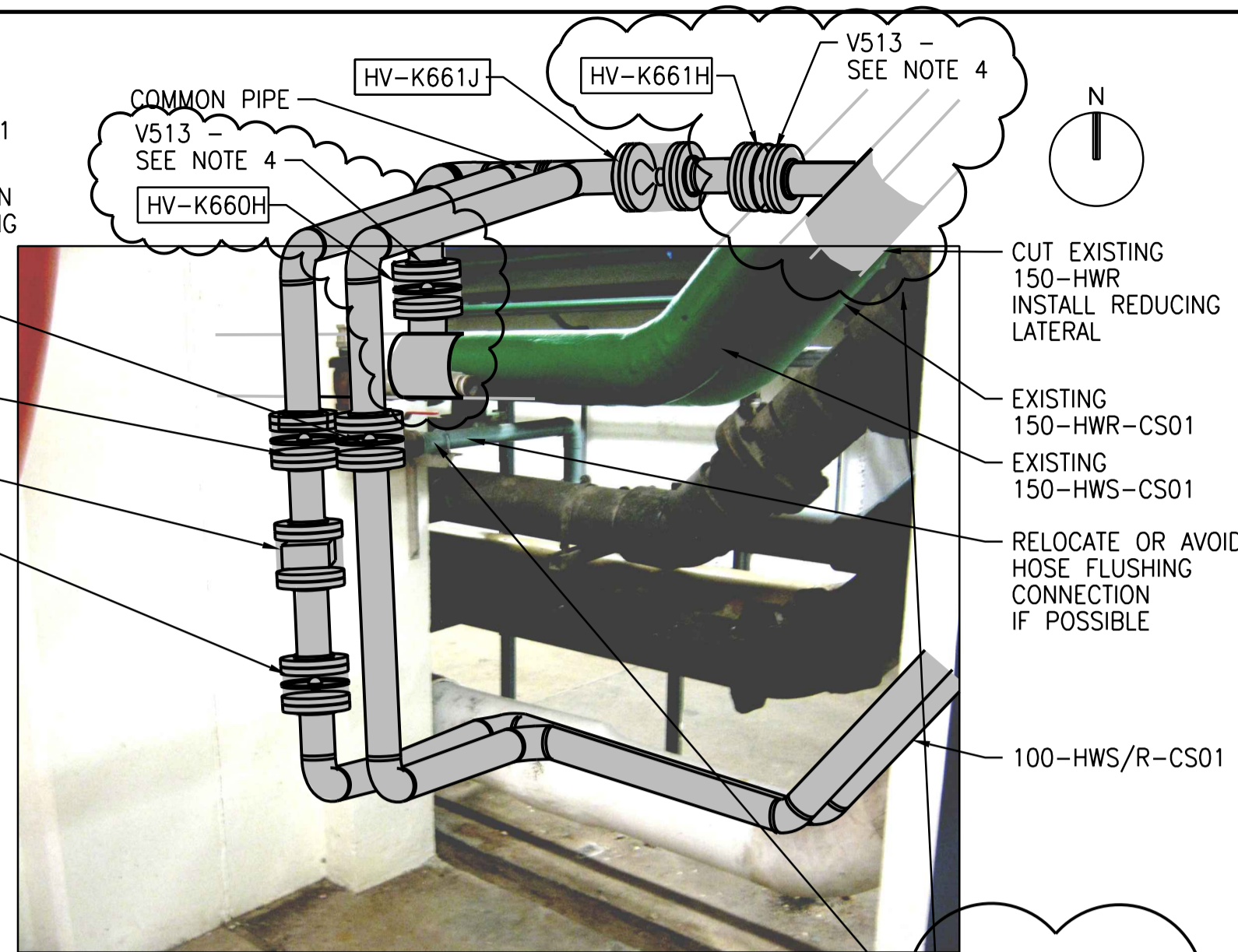
DESIGNED BY: D. LE
 CHECKED BY: T. TRAN
 DRAWN BY: K. FONG
 APPROVED BY: D. LE
 SCALE: 1:100
 ISSUED FOR CONSTRUCTION BY: T. TURZAK
 DATE: 2015/09/11
 DATE: 2015/09/11
 CONSULTANT NO.: 474248

ENGINEER'S SEAL

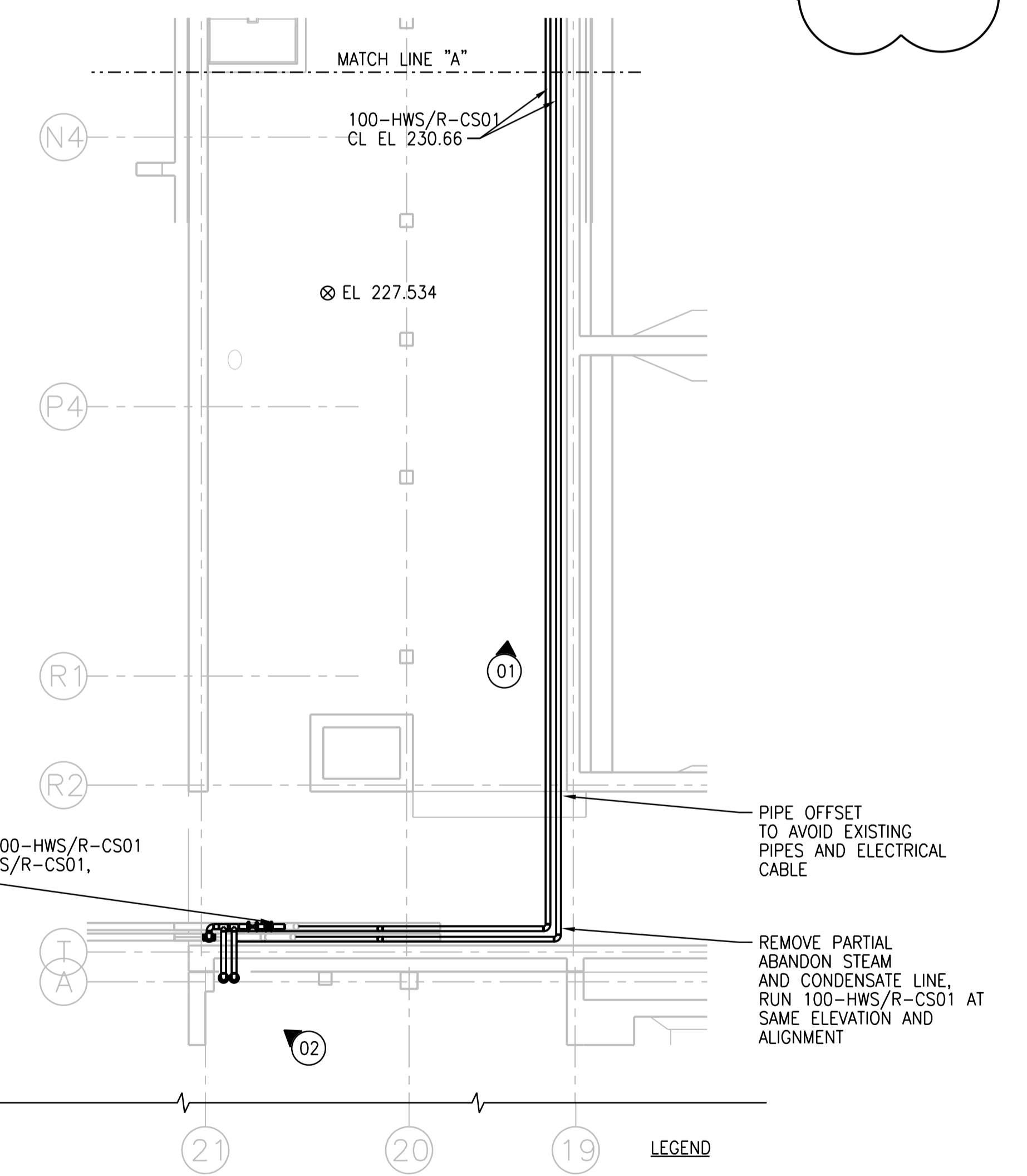
THE CITY OF WINNIPEG
 WATER AND WASTE DEPARTMENT

SOUTH END WATER POLLUTION CONTROL CENTRE
 SEWPC UPGRADING/EXPANSION PROJECT
 MECHANICAL
 HIGH RATE CLARIFICATION BUILDING
 HVAC - BASEMENT PLAN

CITY DRAWING NUMBER: 1-0102-MGAD-K601
 SHEET: 00
 REV: A1
 SIZE: A1



PROVIDE TIE IN POINTS AND TWO SHUT OFF VALVES FOR FUTURE CONNECTION TO HWS AND HWR TO HRC.



LEGEND
 01 PHOTO LOCATION AND DIRECTION