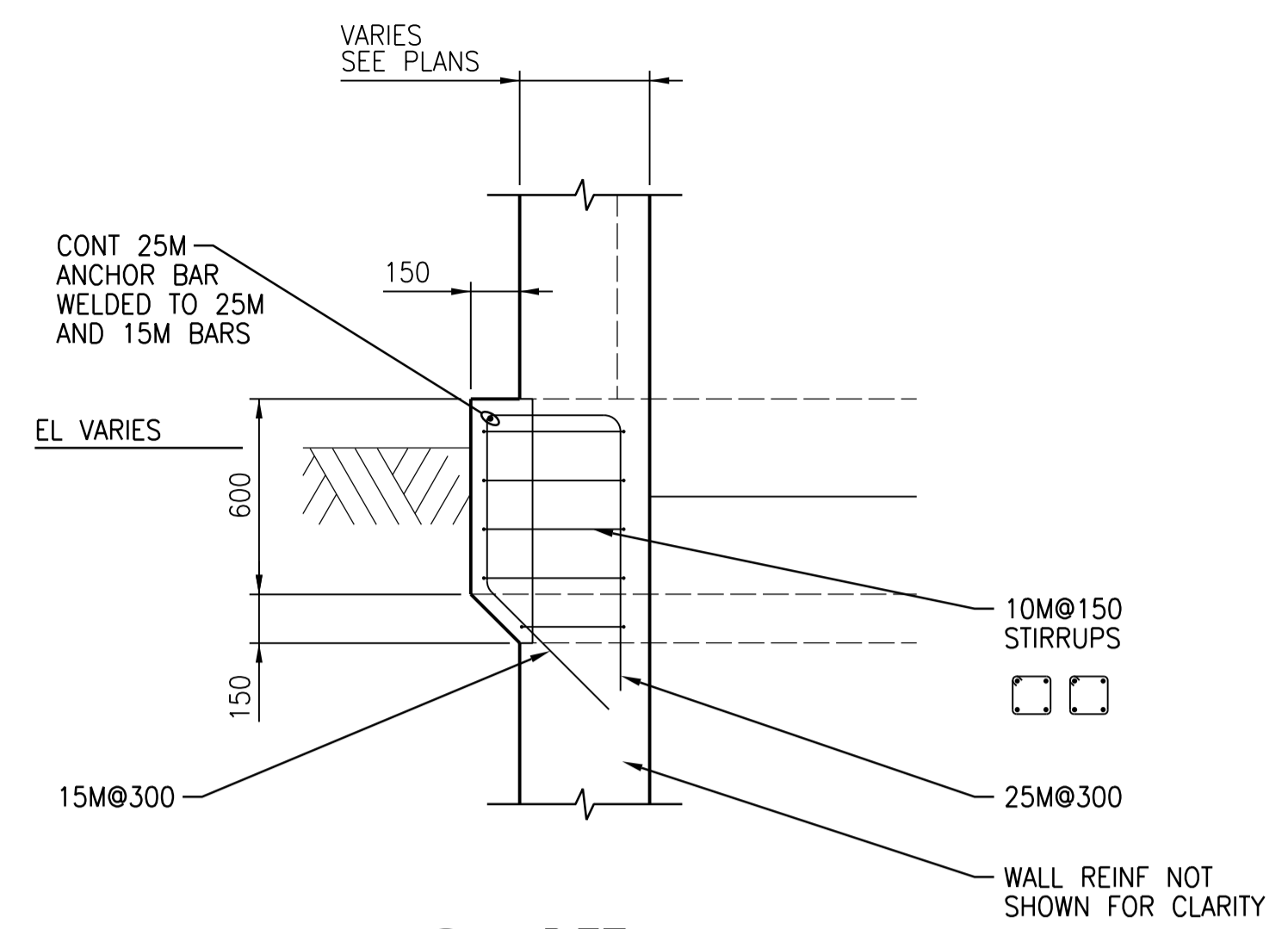
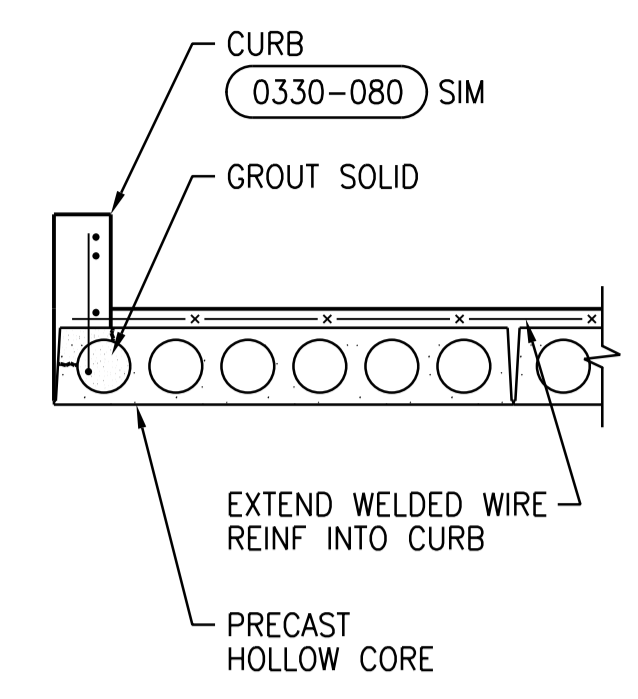


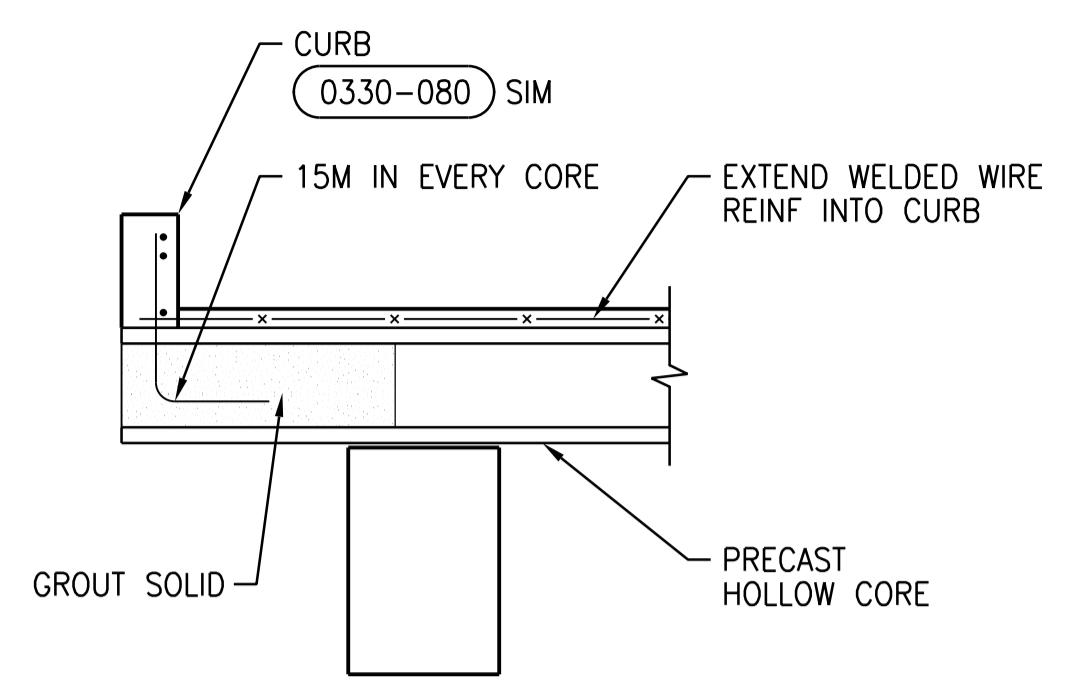
1 DETAIL
1:20
SGAD-K006,
SGAD-K010,
SGAD-K011



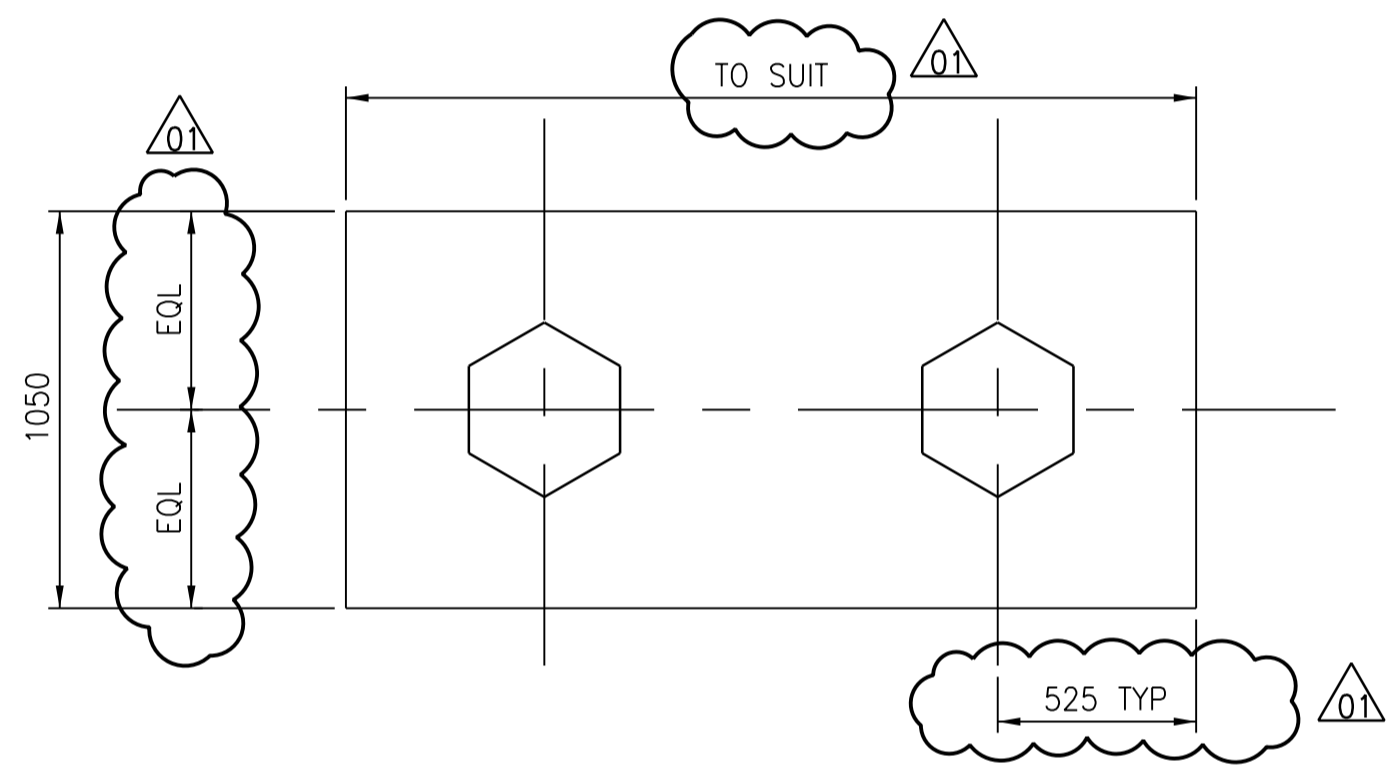
2 DETAIL
1:20
SGAD-K006,
SGAD-K007,
SGAD-K008,
SGAD-K010,
SGAD-K011,
SGAD-K018,
SGAD-K019,
SGAD-K020



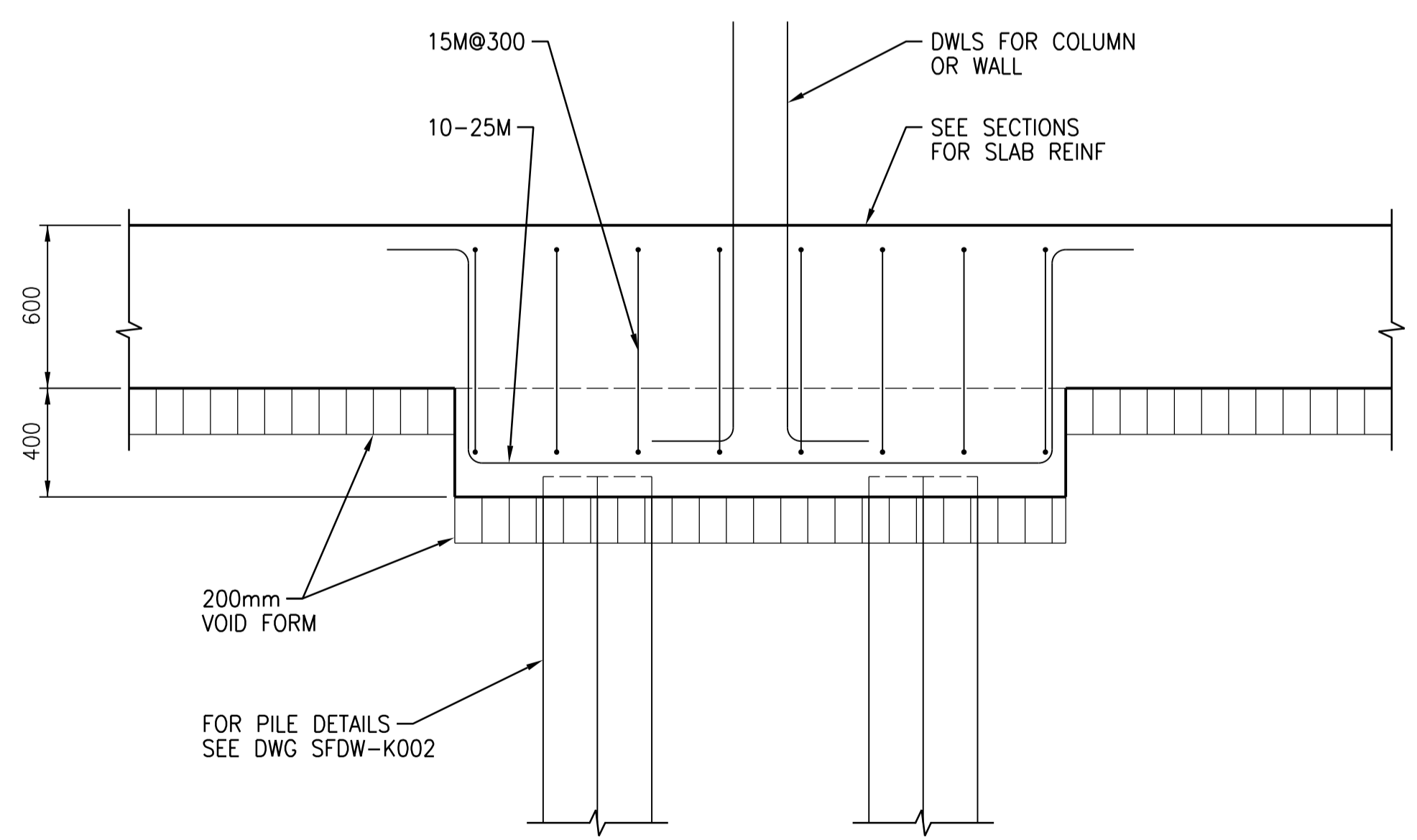
4 DETAIL
1:20
SGAD-K009,
SGAD-K016



5 DETAIL
1:20
SGAD-K010

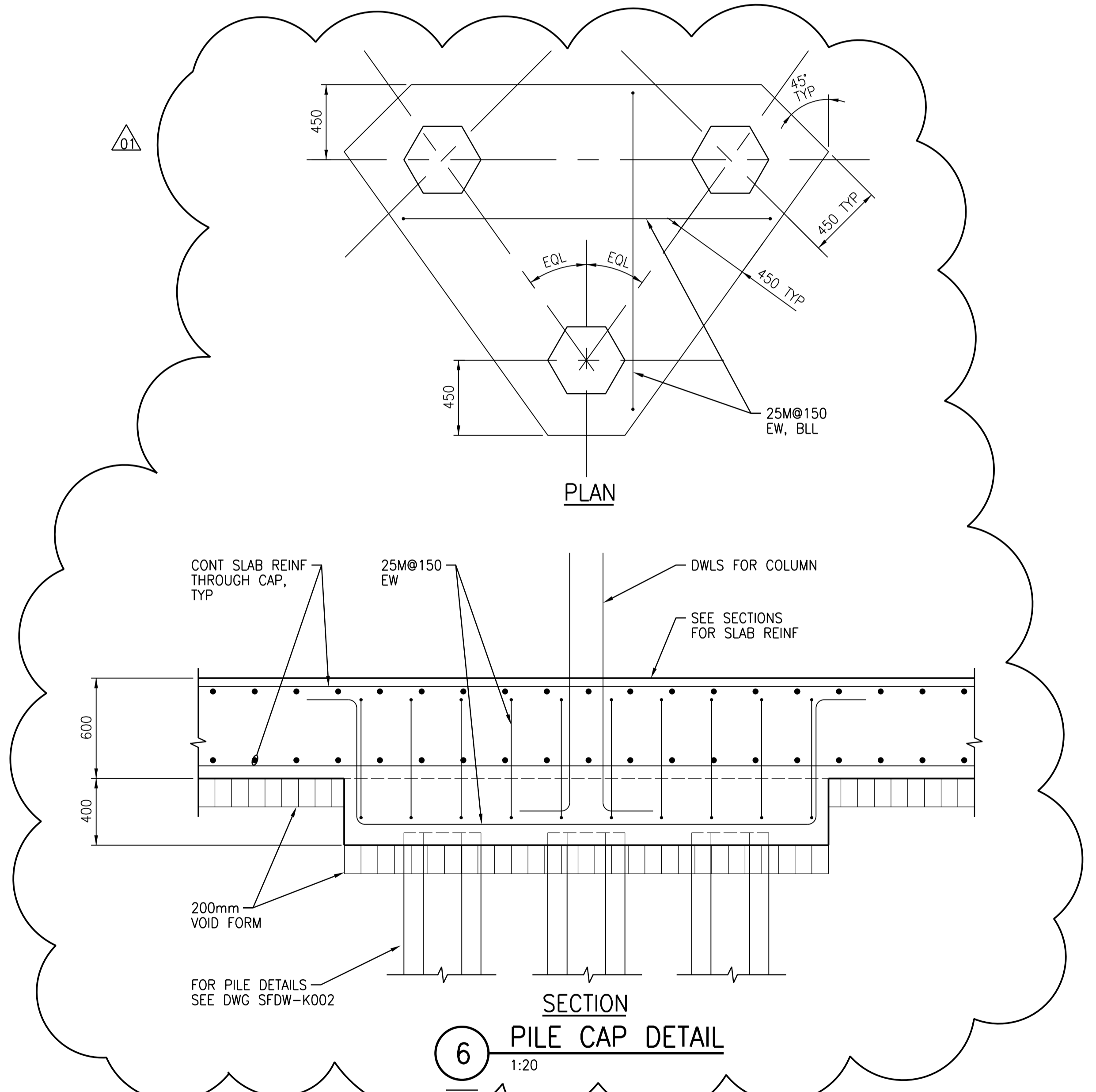


3 PILE CAP DETAIL
1:20



SECTION

3 PILE CAP DETAIL
1:20



6 PILE CAP DETAIL
1:20



NO.	REVISIONS	DATE	DESIGN	CHECK
01	ISSUED FOR ADDENDUM NO. 3	09/2015	C.R.	J.C.
00	ISSUED FOR TENDER	08/2015	G.O.	J.C.

CH2MHILL		KCS GROUP	
SNC-LAVALIN		CONSULTING ENGINEERS	
DESIGNED BY: E. LUI	CHECKED BY: R. PARIKH	DATE: 2015/08/13	ISSUED FOR CONSTRUCTION BY: T. TURZAK
DRAWN BY: G. OMORI	APPROVED BY: E. LUI	DATE: 2015/08/13	DATE: 2015/08/13
SCALE: 1:20		CONSULTANT NO.: 474248	



THE CITY OF WINNIPEG WATER AND WASTE DEPARTMENT		
SOUTH END WATER POLLUTION CONTROL CENTRE SEWPCC UPGRADING/EXPANSION PROJECT STRUCTURAL HIGH RATE CLARIFICATION BUILDING DETAILS		
CITY DRAWING NUMBER 1-0102-SDTL-K003	SHEET 01	REV. SIZE A1