

Table with 2 columns: Abbreviation and Description. Includes entries for AMMETER, AMPERES, AWINGS; AQUA AMMONIA; ANNUAL AVERAGE DAILY FLOW; ANCHOR BOLT, ABOVE; ABANDON; ACOUSTICAL, ACOUSTICAL CEILING; ALTERNATING CURRENT; ASPHALTIC CONCRETE; ACCESS FLOORING; AMERICAN CONCRETE INSTITUTE; ACOUSTICAL CONCRETE MASONRY UNIT, ACOUSTICAL CMU; ACOUSTICAL PANELS; ACOUSTICAL TILE; AIR CONDITIONER UNIT; AREA DRAIN; ADDITIONAL; ADJACENT; AUTOMATION DEVICE PANEL; DRY WEATHER AVERAGE; ADJUSTABLE FREQUENCY DRIVE; ABOVE FINISHED FLOOR; ABOVE FINISHED GRADE; ACOUSTICAL, ACOUSTICAL GLASS; AGGREGATE; AIR HIGH PRESSURE; ANCHOR; AMERICAN INSTITUTE OF STEEL CONSTRUCTION; ADJUSTABLE; ALUMINUM; ALKALINITY; AIR LOW PRESSURE; ALTERNATE; AUTO-MANUAL; ACOUSTICAL METAL ROOF DECKING; ANODIZE; APPROXIMATE; APPROVED; ARCHITECTURAL; ANALOG RELAY; AIR SCOUR, AS SELECTED; AUTOMATIC TRANSFER SWITCH; AUTOMATIC; AUXILIARY; AVERAGE; WET WEATHER AVERAGE; AT; BELL; BALANCE; BETWEEN; BLIND FLANGE, BOTTOM FACE; BUTTERFLY VALVE; BASELINE; BACKFLOW PREVENTER; BUILDING; BLOCK; BEAM, BENCHMARK; BOTTOM OF; BOTTOM OF BEAM; BOTTOM OF DUCT; BOTTOM OF PIPE; BOTTOM; BEARING; BRICK; BREAKER; BLACK STEEL PIPE; BALL VALVE, BLOCK VENT; BEGINNING OF VERTICAL CURVE; BYPASS; CONDUIT, CASEMENT; DEGREE CELSIUS; CENTER TO CENTER; COMPRESSED AIR; CABINET; CATCH BASIN, CIRCUIT BREAKER; CENTER OF CIRCLE; CONTROL CABLE; CENTRAL CONTROL PANEL; CENTRAL CONTROL SYSTEM; CONTROLLED DENSITY FILL; CONDENSER WATER RETURN; CONDENSER WATER SUPPLY; CENTRATE, CONSTRUCTION ENTRANCE; CUBIC FEET PER MINUTE; CUBIC FEET PER SECOND; CALIBRATION GAS; CHEMICAL; CHECKERED; CHILLED WATER RETURN; CHILLED WATER SUPPLY; CAST IRON; CAST IRON PIPE, CAST IN PLACE; CULVERT INLET PROTECTION; CAST IRON SOIL PIPE; CONSTRUCTION JOINT; CIRCUIT; CENTERLINE; CEMENT LINED DUCTILE IRON; CONTROLLED LOW STRENGTH FILL; CEILING; CLEAR, CLEARANCE; CONTROLLED LOW STRENGTH MATERIAL; CENTRAL MONITORING PANEL; CORRUGATED METAL PIPE; CONCRETE MASONRY UNIT; COUNTER; CLEANOUT, CARBON MONOXIDE; CARBON DIOXIDE; COLUMN, COLOR; CONDENSATE; CONCRETE; CONDITIONED; CONNECTION; CONSTRUCTION; CONTINUED, CONTINUOUS, CONTINUATION; CONTRACTOR; COORDINATE; COPPER; CENTER PIVOT; CONTROL PANEL NO. X; COUPLING; COMPRESSOR; CONTROL POWER TRANSFORMER, CARPET; CHLORINATED PVC; CONTROL RELAY, CRANE; COLD ROLLED STEEL; CONSTRUCTION ROAD STABILIZATION; COMBINED SEWER; CERAMIC TILE; CURRENT TRANSFORMER; COMPUTER TERMINAL CABINET; CENTER; CENTERED; COUNTERSUNK; CUBIC, CONDENSER(ING) UNIT, COPPER; CUBIC FOOT; CUBIC INCH; COPPER TUBING, HARD DRAWN; CHECK VALVE; COOLING WATER RETURN, CABINET DOOR MOUNTED; WASTE RECEPTACLE; COOLING WATER SUPPLY; CUBIC YARD; CLEAN WATER SERVICES; DEEP, DRAIN; PENNY NAIL SIZE; DUAL ACTION; DATA ACQUISITION SYSTEM; DEFORMED BAR ANCHOR; DOUBLE; DIRECT CURRENT; DOMESTIC COLD WATER; DEGREE; DETAIL; DOUGLAS FIR, DRINKING FOUNTAIN; DROP INLET; DIGESTER GAS; DIGESTER GAS HIGH PRESSURE; DOUBLE HUNG; DUCTILE IRON; DIAMETER; DIAGONAL; DUCTILE IRON PIPE; DIRECTION; DISCHARGE; DOMESTIC HOT WATER RETURN; DOMESTIC HOT WATER; DECANT LIQUOR; DOWN; DISSOLVED OXYGEN; DIRECT-ON-LINE; DRY POLYMER, DISTRIBUTION PANEL; DOOR; DIGESTER SLUDGE, DOWNSPOUT; DRAWING; DOWEL; DELTA; EAST, EMPTY; EACH, EXHAUST AIR; EMPTY BED CONTACT TIME; ECCENTRIC; EMERGENCY EYEWASH; EGG-SHAPED DIGESTER FACILITY; EDUCTOR; EACH FACE, EXHAUST FAN; EFFICIENCY, EFFICIENT; EFFLUENT; EXTERIOR INSULATION AND FINISH SYSTEM; ELEVATION; ELBOW;

Table with 2 columns: Abbreviation and Description. Includes entries for ELECTRICAL LOAD CENTER; ELECTRIC, ELECTRICAL; ENGINEER; EROSION AND SEDIMENT CONTROL; EDGE OF PAVEMENT; EROSION AND SEDIMENT CONTROL; EXPLOSION PROOF, EDGE OF PAVING; EQUAL; EQUALLY SPACED; EQUIPMENT; ELECTRIC SUPPLY; EROSION AND SEDIMENT CONTROL; ELAPSED TIME METER; END OF VERTICAL CURVE; EACH WAY; ELECTRIC WATER COOLER; EXHAUST; EXPANSION, EXPOSED; EXPANSION ANCHOR BOLT; EXPANSION JOINT; DEGREE FAHRENHEIT; FLAT BAR; FUSE; FIXED; FIRE ALARM PANEL; FERRIC CHLORIDE, FLEXIBLE CONDUIT; FLANGED COUPLING ADAPTER; FREE CHLORINE RESIDUAL; FLOOR CLEANOUT; FACTORY; FLOOR DRAIN; FOUNDATION; FEEDER; FINAL EFFLUENT; FIRE EXTINGUISHER; FINISHED FLOOR; FINISH GRADE, FLOAT GLASS; FLAT HEAD; FIRE HYDRANT; FIGURE; FLOW LINE; FLANGE; FLOOR; FLEXIBLE; FLAT HEAD; FILTER; FLUORESCENT; FINISH; FOUL AIR; FLAT ON BOTTOM; FLAT ON TOP; FIELD PANEL; FEET PER MINUTE; FORWARD REVERSE; FIBERGLASS REINFORCED PLASTIC; FOLDING SHOWER SEAT; FERMENTER SLUDGE; FERMENTER SUPERNATANT; FLUSHING WATER; FOOT OR FEET; FOOTING; FIXTURE UNIT; FULL VOLTAGE NON-REVERSING; FULL VOLTAGE REVERSING; FORWARD; GROUND; GAUGE; GALLON; GALVANIZED; GYPSUM BOARD; GROOVED COUPLING; GLAZED CONCRETE; MASONRY UNITS; GRIT EFFLUENT; GROOVED FLANGE ADAPTER; GROUND FAULT INTERRUPTER; GROUND FAULT RELAY; GREENHOUSE; GLASS; GALLONS PER DAY; GALLONS PER HOUR; GALLONS PER MINUTE; GLOBAL POSITION SYSTEM; GLYCOL RETURN; GRATING; GRIT SLURRY; GRIT; GLYCOL SUPPLY; GYPSUM SOFFIT BOARD; GALVANIZED STEEL PIPE; GATE VALVE; GRAVEL; GYPSUM WALLBOARD; GYPSUM;

Table with 2 columns: Abbreviation and Description. Includes entries for HIGH, HORN OR HOWLER; HYDROGEN; HYDROGEN SULFIDE; HEADED ANCHOR STUD; HOLLOW CORE WOOD; HYDROCHLORIC ACID; HYDRAULIC OIL; HARDENER; HARDNESS; HEADER; HARDWARE; HOT FLUSHING WATER; HYDRAULIC GRADE LINE; HOOK; HEIGHT; HANDHOLE; HIGH INTENSITY DISCHARGE; HOOK; HOLLOW METAL; HAND-OFF-AUTO; HAND-OFF-REMOTE; HORIZONTAL; HORSEPOWER; HIGH POINT; HYDRAULIC POWER UNIT; HOSE RACK, HANDRAIL; HIGH RATE CLARIFICATION; HIGH RATE SLUDGE; HOSE VALVE; HEATING, VENTILATING AND AIR CONDITIONING; HIGH WATER LEVEL; HOT WATER RETURN; HOT WATER SUPPLY; INSTRUMENT AIR SUPPLY; INTERRUPTING CAPACITY; INDUCED DRAFT, INSIDE DIAMETER; INVERT ELEVATION; INSIDE FACE; INSULATING, INSULATING GLASS; INCH; INCANDESCENT; INFLENT; INJECTIONS; INSTANTANEOUS; INSTRUMENT, INSTRUMENTATION; INSULATION; INVERT; INLET PROTECTION, INSTRUMENTATION PANEL; IRRIGATION; INSULATED TEMPERED GLASS; ISOLATION TRANSFORMER; INTAKE UNIT; IRRIGATION WELL; JALOUSIE; JAL-AWNING; JUNCTION BOX; JANITOR; JUNCTION; JOINT; KEY GROUP, KEY INTERLOCK; THOUSAND POUNDS; KITCHEN; KICKPLATE; KITCHEN SINK; KILOVOLTS; KILOVOLT AMPERES; KILOVOLT AMPERES REACTIVE; KILOWATT; ANGLE, LENGTH; LIGHTNING ARRESTER; LABORATORY; LAMINATE; LATITUDE; POUND; LIQUID CONCENTRATED POLYMER; LIGHTING CONTACTOR; COMBINATION LOUVER/DAMPER; LOADING DOCK; LAND DRAINAGE SEWER; LOWER EXPLOSIVE LIMIT;

Table with 2 columns: Abbreviation and Description. Includes entries for LINEAR FEET; LONG; LUBRICATING OIL; LEFT HAND; LEFT HAND REVERSE; LONG LEG HORIZONTAL; LONG LEG VERTICAL; LINTEL; LONGITUDINAL; LOCK-OUT STOP PUSHBUTTON; LIQUID OXYGEN; LIGHT POLE, LIGHTING PANEL, LOCAL PANEL; LOW POINT; LOW PRESSURE STEAM; LATCHING RELAY, LOCALE-REMOTE, LONG RADIUS; LABORATORY SINK; LEFT; LIGHTS OR LIGHTING; LIGHTING TRANSFORMER; LOW WATER LEVEL; MIXED AIR, MANUAL-AUTO; MASONRY; MATERIAL; MAXIMUM; MACHINE BOLT; MASONRY CLEARANCE; MODULATE-CLOSE; MOTOR CONTROL CENTER; MASONRY CONTROL JOINT; MEDIUM DENSITY OVERLAY; MECHANICAL; METHANOL; MANUFACTURED; MANUFACTURER; MILLION GALLONS PER DAY; MANHOLE, MOUNTING HEIGHT; MINIMUM; MISCELLANEOUS; MECHANICAL JOINT; MIXED LIQUOR; MAIN LUGS ONLY; DRY WEATHER MAXIMUM MONTH; MECHANICAL MOUNTING PANEL; WET WEATHER MAXIMUM MONTH; MANUAL OPERABLE, MASONRY OPENING; MIXED POLYMER, METAL PANEL; MULTIPURPOSE UNIT; MANUFACTURER'S STANDARD; MANUFACTURER SUPPLIED CABLE; GROUPED MOTOR CONTROL; MOUNT; MOUNTED; MOUNTING; MANUAL TRANSFER SWITCH; MILL TYPE STEEL PIPE; MULCHING; MERCURY VAPOR; MAXIMUM WATER SURFACE; NORTH, NEUTRAL; NITROGEN; NOT APPLICABLE; NON-AUTOMATIC; NORMALLY CLOSED; NEUTRAL; NATURAL GAS; NATIONAL GEODETIC VERTICAL DATUM; NOT IN CONTRACT; NORMALLY OPEN; NUMBER; NOMINAL; NON-PROTECTED; NATIONAL PIPE THREADS; NON-SHRINK; NOT TO SCALE; OXYGEN; OUT TO OUT; OUTDOOR AIR, OVERALL, ODOROUS AIR; ON CENTER; OPEN-CLOSE (O); OPEN-CLOSE-AUTO; OPEN-CLOSE-REMOTE;

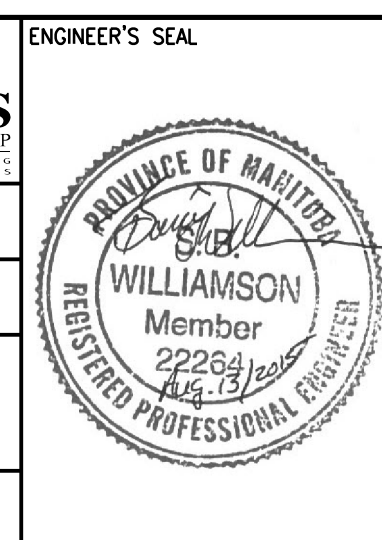
Table with 2 columns: Abbreviation and Description. Includes entries for OUTSIDE DIAMETER, OVERFLOW DRAIN; OUTSIDE FACE; OWNER FURNISHED, CONTRACTOR INSTALLED; OWNER FURNISHED, OWNER INSTALLED; OVERLOAD RELAY; ON-OFF; ON-OFF-AUTO; ON-OFF-REMOTE; OPAQUE PANEL, OUTLET PROTECTION; OPERATOR; OPENING; OPPOSITE; OUTSIDE AIR; OPEN-STOP-CLOSE; OPEN SITE DRAIN; OPEN WEB STEEL JOIST; OUNCE; PROJECTED; PILASTER, PIPE; PAVER TILE; PUSHBUTTON SWITCH; POINT OF CURVE, PHOTOCCELL; PRECAST CONCRETE PANEL; PRECAST CONCRETE CYLINDER PIPE; PRESSURE CONTROL VALVE; PROCESS DRAIN; PRIMARY EFFLUENT, PLAIN END; PEDESTAL, PEDESTRIAN; POLYETHYLENE PIPE; PENETRATION; POUNDS PER CUBIC FOOT; PENTHOUSE; HYDROGEN ION CONCENTRATION; PHASE; POINT OF INTERSECTION; PILOT TUBE TEST STATION; PREMOULDED JOINT FILLER; PLATE (STEEL); PROPERTY LINE; PLASTIC LAMINATE; PLASTER, PLASTIC; PROGRAMMABLE LOGIC CONTROLLER; PLYWOOD; PANEL; PROCESS OVERFLOW; POWER POLE; PUSH-PULL; POLYPROPYLENE LINED PAIR; POINT OF REVERSE CURVE; PRECAST; PREFABRICATION; PRESSURE; PRIMARY; PERMANENT REFERENCED MARKER; PROJECTION; PROPERTY; PRIMARY SLUDGE, PLASTIC SHEET; POLYCARBONATE SHEET, PAINT SYSTEM; POUNDS PER SQUARE FOOT; POUNDS PER SQUARE INCH; POUNDS PER SQUARE INCH, GAUGE; POINT OF TANGENCY; POTENTIAL TRANSFORMER; PRESSURE TREATED; PAPER TOWEL DISPENSER; PARTITION; PROCESS VENT, PLUG VALVE; POLYVINYL CHLORIDE; POINT OF VERTICAL INTERSECTION; PAVEMENT; POINT OF VERTICAL TANGENCY; POTABLE WATER;

NOTE:  
1. CONTACT ENGINEER FOR ABBREVIATIONS USED BUT NOT SHOWN ON THIS DRAWING.

GENERAL NOTE:  
1. THIS IS A STANDARD LEGEND SHEET. THEREFORE, NOT ALL OF THE INFORMATION SHOWN MAY BE USED ON THIS PROJECT.



CH2MHILL. KCS GROUP. SNC-LAVALIN. DESIGNED BY: G. GERMAN. CHECKED BY: J. CHENG. DRAWN BY: G. GERMAN. APPROVED BY: J. CHENG. SCALE: NTS. ISSUED FOR CONSTRUCTION BY: T. TURZAK. DATE: 2015/08/13. DATE: 2015/08/13. CONSULTANT NO.: 474248. 00 ISSUED FOR TENDER. 08/2015. G.G. J.C. NO. REVISIONS. DATE. DESIGN CHECK.



THE CITY OF WINNIPEG WATER AND WASTE DEPARTMENT. SOUTH END WATER POLLUTION CONTROL CENTRE SEWPPC UPGRADING/EXPANSION PROJECT. GENERAL ABBREVIATIONS (1). CITY DRAWING NUMBER: 1-0102-DDTL-A007. SHEET: 001. REV: 00. SIZE: A1. FILE NAME: 1-0102-DDTL-A007-001.dgn