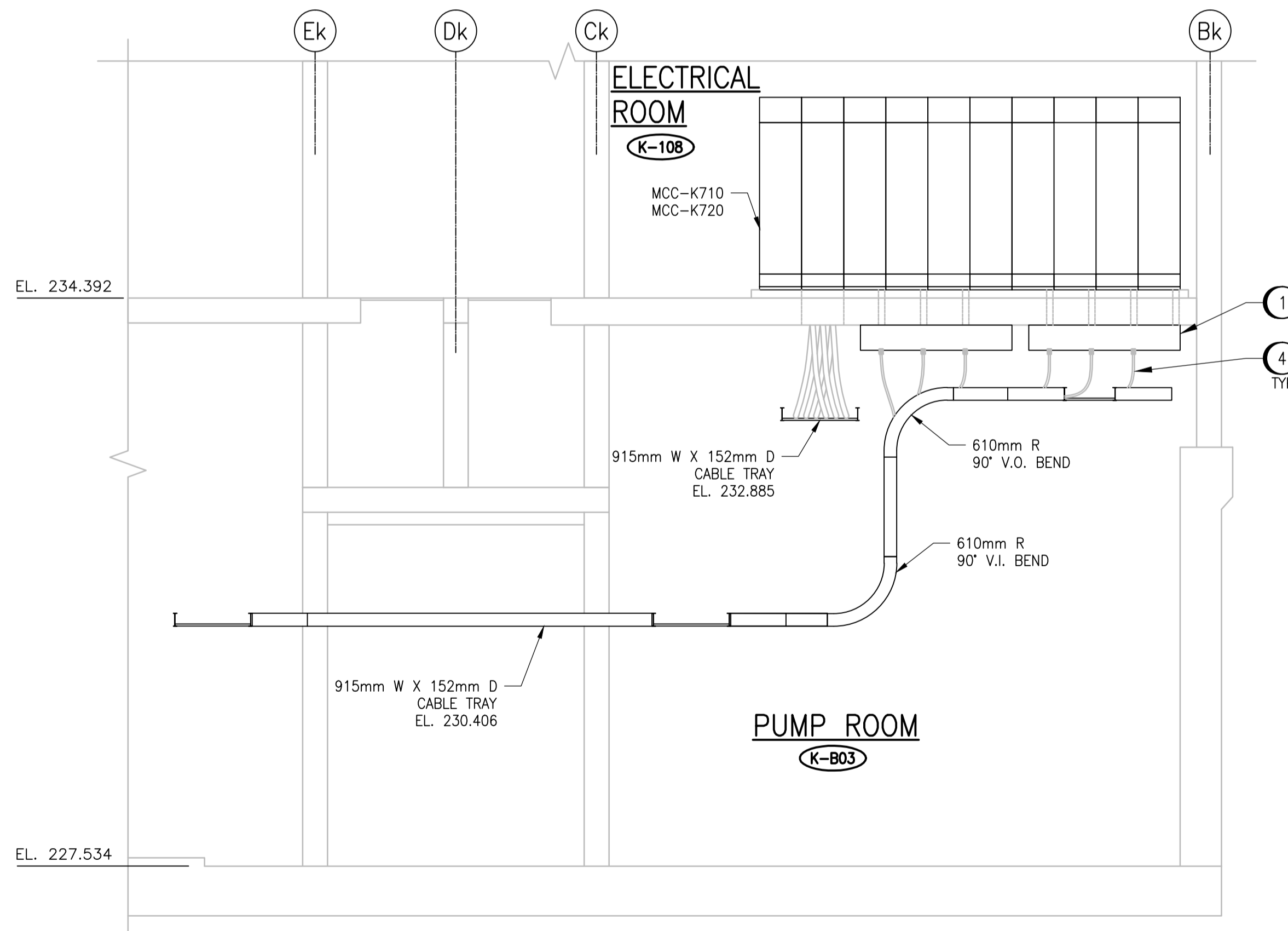
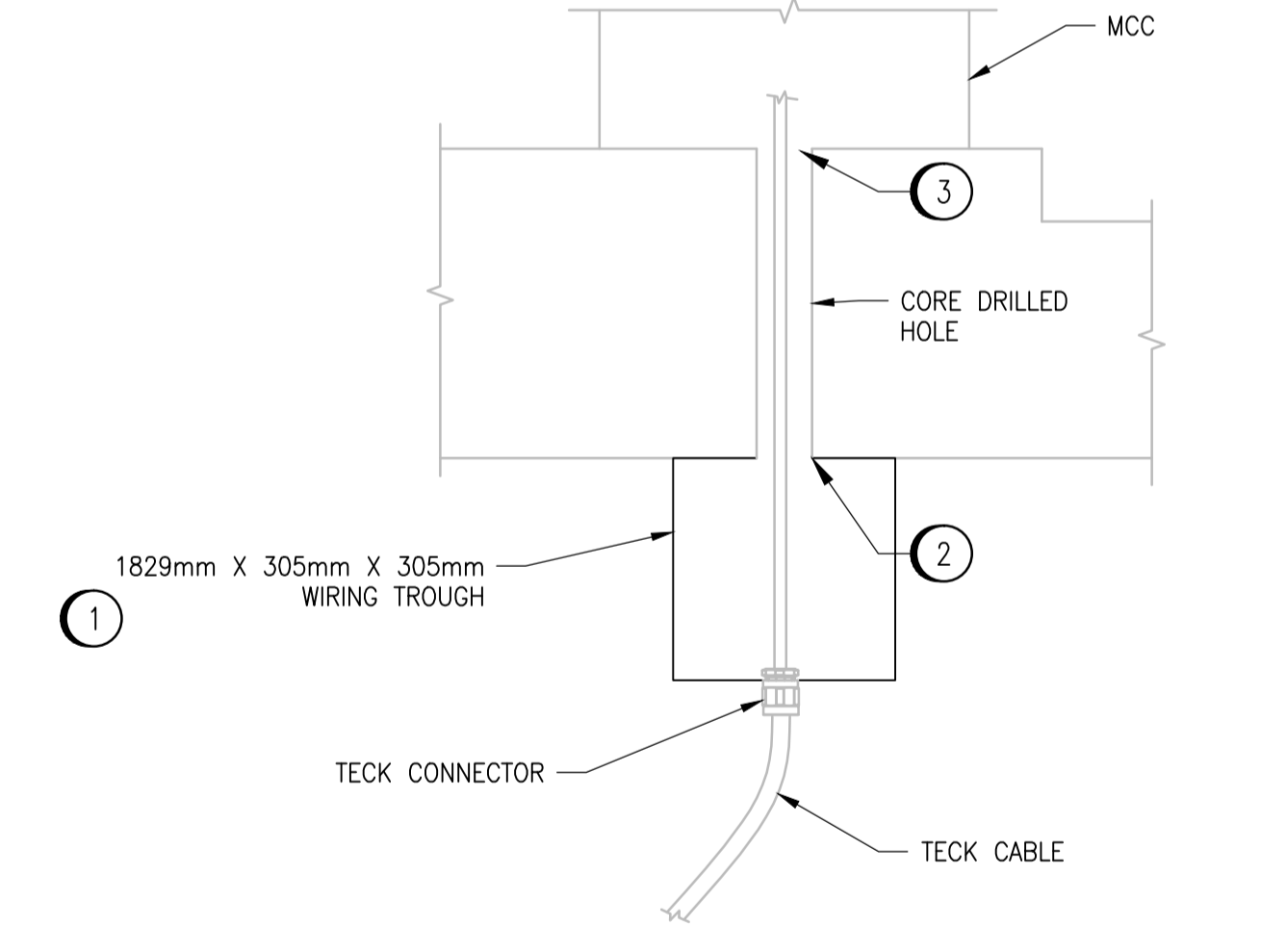


U SECTION
1 : 50
ECTR-K001



V SECTION
1 : 50
ECTR-K001



W CABLE FLOOR PENETRATION (TYP.)
NTS

GENERAL NOTES:

1. REFER TO DWG. 1-0102-ECTR-K002 001 FOR CABLE TRAY GENERAL NOTES.
2. DETAILS SHOW GENERAL DESIGN CONCEPTS ONLY. ADJUST INSTALLATION AND MATERIALS TO REFLECT ACTUAL ON-SITE CONDITIONS / INSTALLATIONS.
3. CABLE TRAY SUPPORTS ARE NOT SHOWN. CONTRACTOR TO PROVIDE ALL THE REQUIRED SUPPORTS IN ACCORDANCE WITH THE MANUFACTURER'S RECOMMENDATION AND IN ACCORDANCE WITH NEMA VE2.

SPECIFIC NOTES:

1. CONTRACTOR TO PROVIDE 1829mm L X 305mm H X 305mm W WIRING TROUGH (TOTAL OF 6) FOR CABLE ENTRY TO THE MCC. PROVIDE ALL NECESSARY MOUNTING AND SUPPORTS.
2. PROVIDE RUBBER GROMMET TO PROTECT THE CABLE FROM ABRASION AND WEAR.
3. PROVIDE SEAL/FIRE STOP AT FLOOR PENETRATION.
4. NOT ALL CABLES THAT WILL BE ROUTED TO THE BASEMENT CABLE TRAYS ARE SHOWN. SOME CABLES ARE SHOWN TO INDICATE A TYPICAL DETAIL FOR CABLE FLOOR PENETRATION TO THE MCC.



NO.	REVISIONS	DATE	DESIGN	CHECK
00	ISSUED FOR TENDER	08/2015	SLJ	DEB

CH2MHILL.
SNC-Lavalin
DESIGNED BY: S. JUGANAS
DRAWN BY: S. JUGANAS
SCALE: AS SHOWN
DATE: 2015/06/08
CONSULTANT NO.: 474248

CHECKED BY: D. BECKER
APPROVED BY: D. BECKER
ISSUED FOR CONSTRUCTION BY: DATE:

ENGINEER'S SEAL

PRELIMINARY
NOT FOR CONSTRUCTION

THE CITY OF WINNIPEG
WATER AND WASTE DEPARTMENT

SOUTH END WATER POLLUTION CONTROL CENTRE
SEWPCC UPGRADING/EXPANSION PROJECT
ELECTRICAL
HIGH RATE CLARIFICATION
CABLE TRAY DETAILS

CITY DRAWING NUMBER: 1-0102-ECTR-K003
SHEET: 003
REV.: 00
SIZE: A1

1-0102-ECTR-K001	CABLE TRAY LAYOUT - BASEMENT FLOOR
REFERENCE DRAWINGS	DESCRIPTION