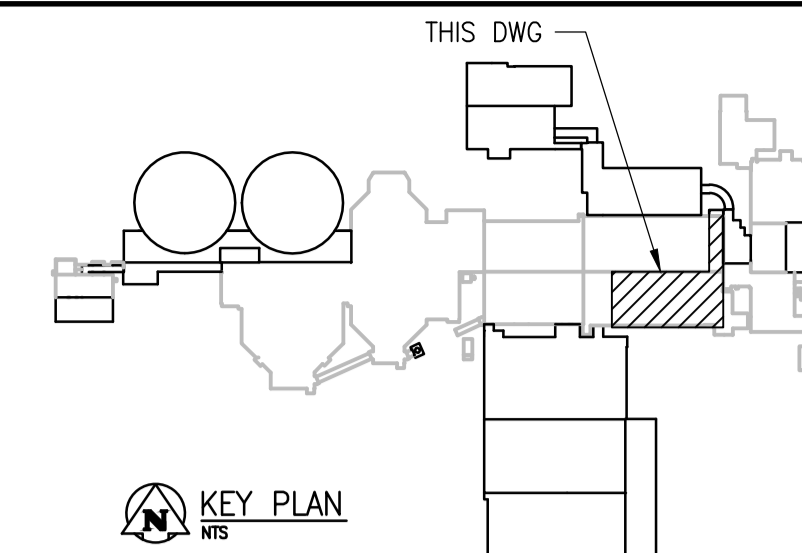
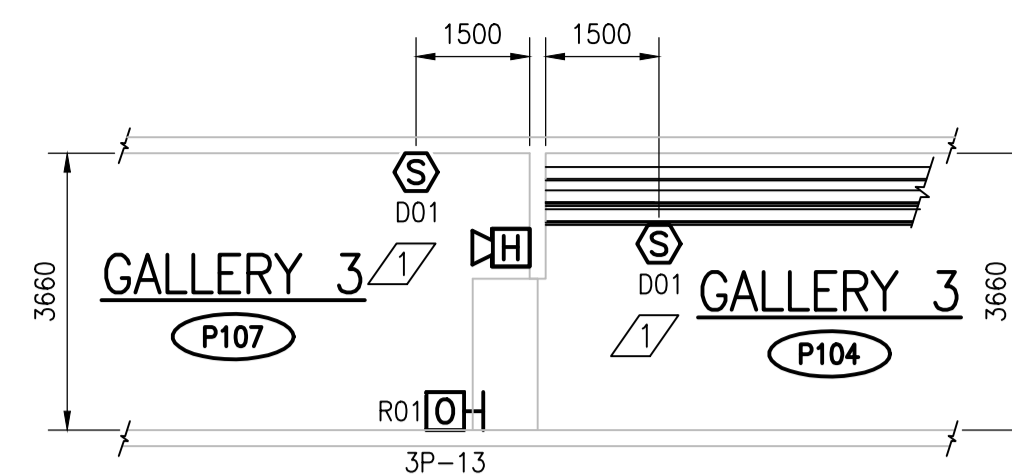


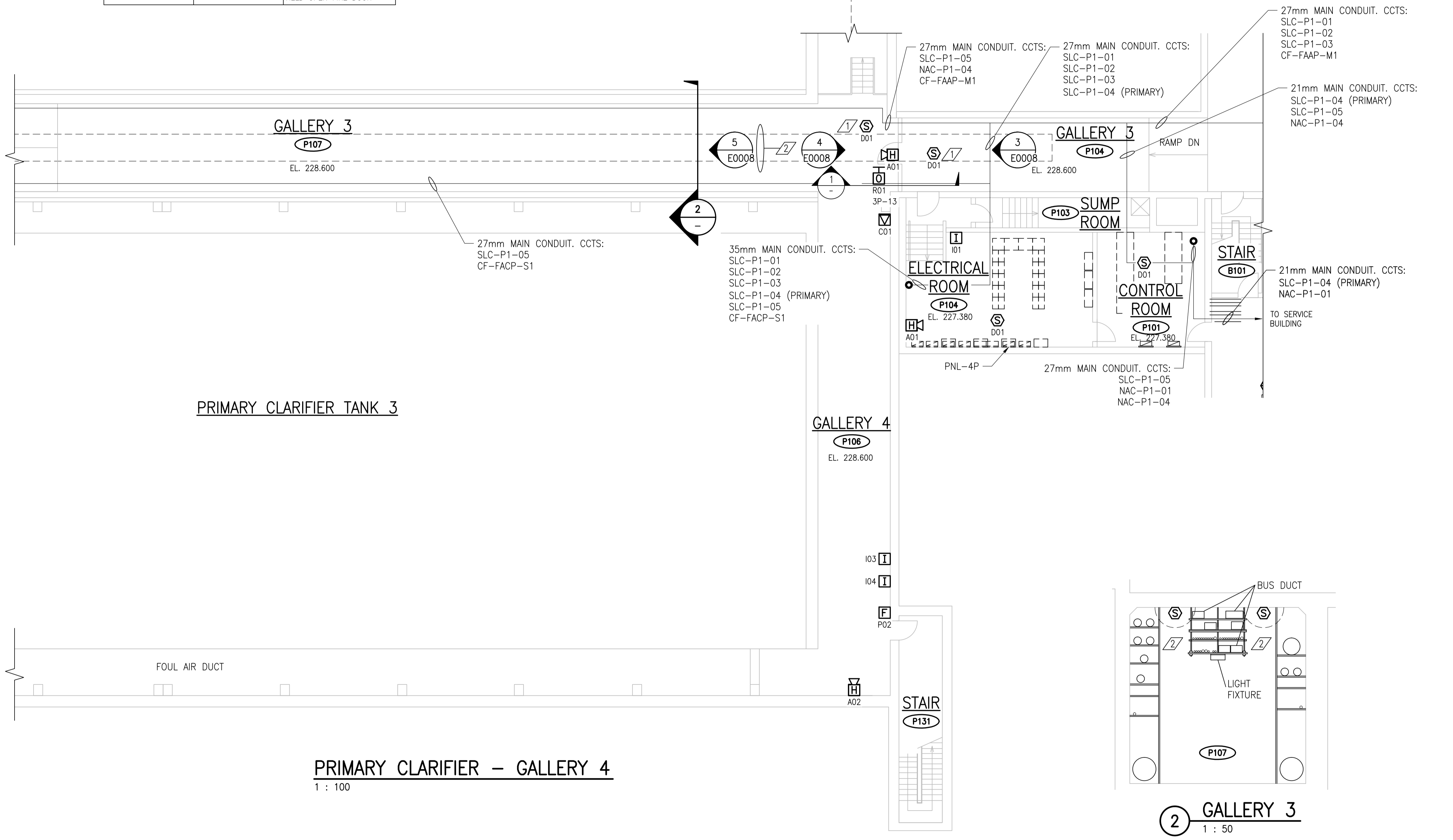
DESIGN INTENT NOTES	
1	FAS-P107-D01 AND FAS-P104-D01 ARE INTENDED TO ACTIVATE DOOR RELEASE FAS-P107-R01 IN THE EVENT OF A FIRE.
2	THE OVERHEAD ELECTRICAL SUPPORTS INCLUDING THE BUS DUCT AND LIGHT FIXTURES IN GALLERY 3 PREVENTS PLACEMENT OF DETECTORS ALONG THE CENTERLINE OF THE DOORWAY AT CEILING LEVEL.
3	PULLSTATION FAS-P106-P02 IS NOT POSITIONED ON THE LATCH SIDE OF THE EXIT DOORWAY, AS MOST TRAFFIC WILL EXIT FROM THE NORTH SIDE OF THE DOOR.

ROOM DETAILS			
ROOM ID	HEIGHT	CEILING TYPE	REF DWG
P101	2.44m	SUSPENDED ACOUSTIC TILE	SEP-283
P102	2.44m	SUSPENDED ACOUSTIC TILE	SEP-283
P104	3.65m	CONCRETE	SEP-283
P106	4.88m	CONCRETE	SEP-258
P107	3.66m	CONCRETE (*MANY OBSTRUCTIONS)	SEP-258
P116	10.57m	STAIRWELL (STEEL)	SEP-054
P124	3.61m	CONCRETE	SEP-258
P131	8.53m	STAIRWELL	SEP-252

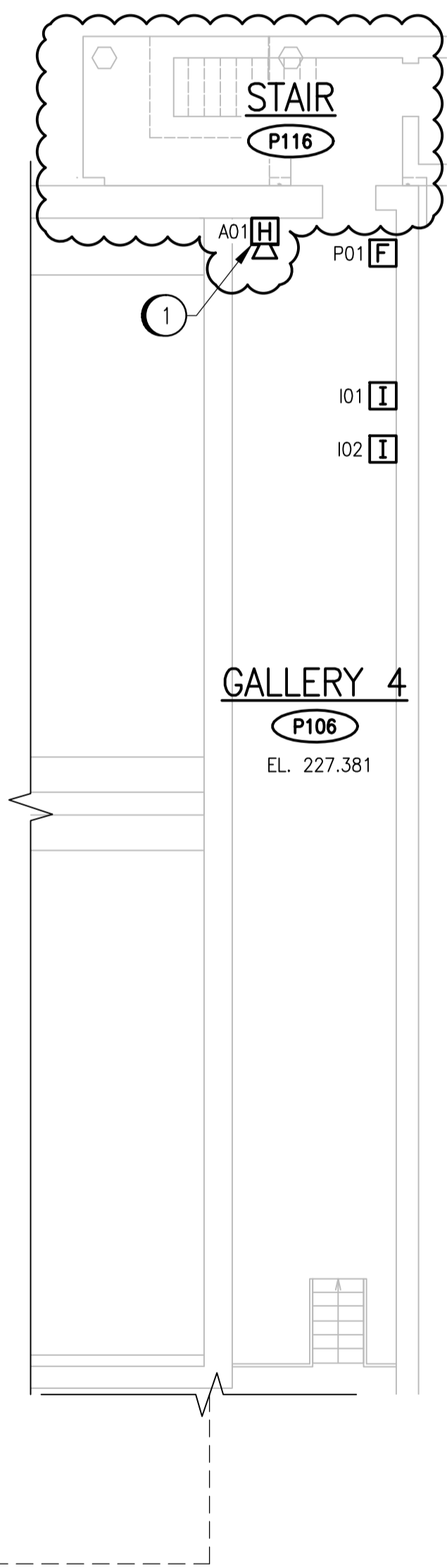
INTERLOCK SCHEDULE		
INITIATING DEVICE	CONTROLLED DEVICE	ACTION
ALL	FAS-P107-R01	RELEASE MAGNETICALLY HELD OPEN FIRE DOOR



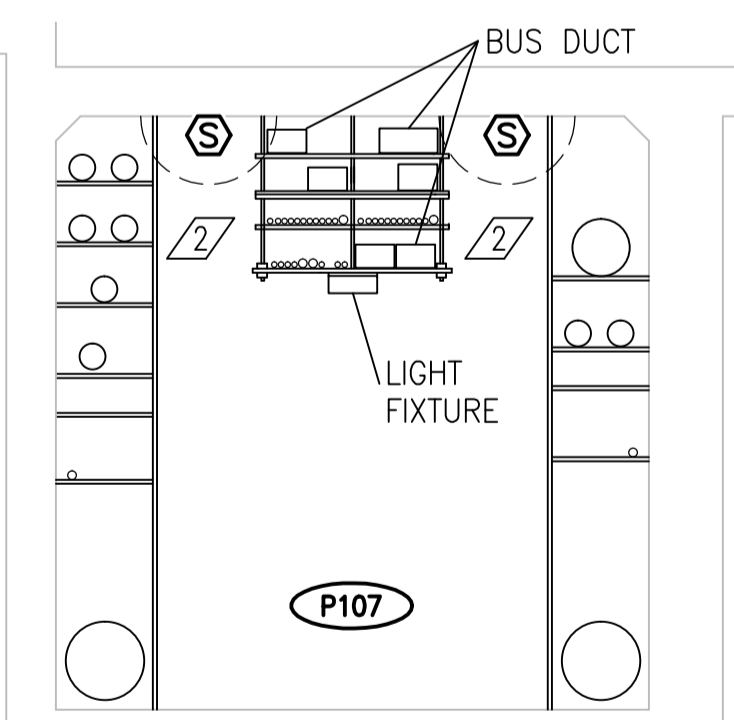
1 DOOR RELEASE HEAT DETECTOR PLACEMENT
1 : 100



- SPECIFIC NOTES**
- RELOCATE FIRE ALARM HORN AND ASSOCIATED EQUIPMENT TO AVOID OBSTRUCTION WITH NEW STAIRWELL DOORWAY. EXTEND WIRING AND CONDUIT AS REQUIRED.
- GENERAL NOTES**
- ALL WIRING SHALL BE RUN IN RIGID, THREADED ALUMINUM CONDUIT.
 - IF REQUIRED, WIRING IS TO BE EXTENDED THROUGH JUNCTION BOXES, COMPLETE WITH TERMINAL STRIPS. SPLICES OR MARRETTE CONNECTIONS ARE NOT ALLOWED.



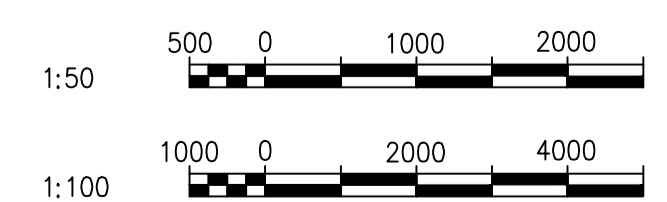
2 GALLERY 3
1 : 50



SEP-1162	SMOKE DETECTOR LOOP P538
SEP-1161	SMOKE DETECTOR LOOP P534
SEP-278	EXISTING CLARIFIERS ELECTRICAL - LIGHTING
1-0102P-E0013	ELECTRICAL CLASSIFICATION PLAN
1-0102-EFAS-A001	FIRE ALARM LEGEND AND DETAILS
DRAWING NUMBER	REFERENCE DRAWINGS

NOTES:

- DEVICE TAGS ARE SHOWN IN SHORTHAND NOTATION. FULL DEVICE TAG FORMAT IS FAS-Pxxx-yyy, WHERE xxx IS THE ROOM NUMBER, AND yyy IS THE DEVICE IDENTIFIER.
- THIS DRAWING SUPERSEDES DRAWING 1-0102P-E0003.



00	ISSUED FOR TENDER	08/2015	WE	DEB
NO.	REVISIONS	DATE	DESIGN	CHECK

CH2MHILL	
DESIGNED BY: V. ELIMBAN	CHECKED BY: D. BECKER
DRAWN BY: MJ. PERSSON	APPROVED BY: D. BECKER
SCALE: AS SHOWN	ISSUED FOR CONSTRUCTION BY: DATE:
DATE: 2015/04/14	DATE:
CONSULTANT NO.: 474248	

ENGINEER'S SEAL
PRELIMINARY NOT FOR CONSTRUCTION

THE CITY OF WINNIPEG WATER AND WASTE DEPARTMENT		
SOUTH END WATER POLLUTION CONTROL CENTRE SEWPC UPGRADING/EXPANSION PROJECT ELECTRICAL - FIRE ALARM PRIMARY CLARIFIER GALLERIES 3 & 4		
CITY DRAWING NUMBER 1-0102-EFAS-P001	SHEET 001	REV. SIZE 00 A1