

PLUMBING SYMBOLS

	EXISTING PIPE (SCREENED)
	NEW PIPE
	EXISTING PIPE TO BE ABANDONED
	EXISTING PIPE TO BE REMOVED
	ANCHOR
	CAP
	ELBOW, 90 DEGREE
	ELBOW UP
	ELBOW DOWN
	CROSS
	TEE
	TEE UP
	TEE DOWN
	ELBOW, 45 DEGREE
	LATERAL
	LATERAL UP
	LATERAL DOWN
	CONCENTRIC REDUCER
	ECCENTRIC REDUCER
	UNION
	GROOVED END JOINT
	FLEXIBLE (ELASTOMER) PIPE CONNECTION
	STEEL BELLOWS EXPANSION JOINT
	STRAINER
	SIGHT GLASS
	PRESSURE SWITCH
	FLOW SWITCH
	PRESSURE GAUGE WITH COCK
	THERMOMETER
	ROTAMETER
	HOSE RACK (TYPE AS INDICATED)
	EMERGENCY EYEWASH
	EMERGENCY SAFETY SHOWER
	COMBINED EMERGENCY SHOWER AND EYE WASH
	FIRE EXTINGUISHER
	X = NO. IN SPECS
	X = F - FLOOR CLEANOUT D - DECK CLEANOUT W - WALL CLEANOUT
	HUB DRAIN X = NO. IN SPECS Y = T - WITH TRAP P - WITH PRIMED TRAP
	FLOOR DRAIN X = NO. IN SPECS Y = T - WITH TRAP P - WITH PRIMED TRAP
	AREA DRAIN X = NO. IN SPECS Y = T - WITH TRAP P - WITH PRIMED TRAP
	OD-X OVERFLOW DRAIN X = NO. IN SPECS
	RD-X ROOF DRAIN X = NO. IN SPECS

SEE PROCESS LEGEND SHEET FOR ADDITIONAL SYMBOLS

PLUMBING FIXTURE IDENTIFICATION

LEGEND	FIXTURE
AD	AREA DRAIN
BFP	BACKFLOW PREVENTER
CO	CLEANOUT
DF	DRINKING FOUNTAIN
EEW	EMERGENCY EYE WASH
ES	EMERGENCY SAFETY SHOWER
EWC	ELECTRIC WATER COOLER
FCO	FLOOR CLEANOUT
FD	FLOOR DRAIN
GD	GUTTER DRAIN
HD	HUB DRAIN
HDS	HOSE DOWN STATION
HV	HOSE VALVE
LAV	LAVATORY
MS	MOP SINK
OD	OVERFLOW ROOF DRAIN
ON	OVERFLOW NOZZLE
RD	ROOF DRAIN
SK	SINK
SH	SHOWER
SPD	SUMP PUMP DISCHARGE
SSH	COMBINED EMERG. SHOWER & EYEWASH
SSK	SERVICE SINK
LSK	LABORATORY DOUBLE SINK
TP	TRAP PRIMER (PRESSURE ACTUATED)
TV	TEMPERING VALVE
UR	URINAL
WC	WATER CLOSET
WF	WASH FOUNTAIN

FIXTURE CONNECTION SCHEDULE

ITEM NO	DESCRIPTION	DRAIN	V	HW	W1
LAV-1	LAVATORY	50mm	40mm	15mm	15mm
MS-1	MOP SINK	80mm	40mm	15mm	15mm
SK-1	LAB SINK	50mm	40mm	15mm	15mm
SK-2	SINK	50mm	40mm	15mm	15mm
WC-1	WATER CLOSET, FLUSH VALVE	100mm	50mm	25mm	---

EXAMPLE CALLOUT: SSH - X
 FIXTURE LEGEND
 NO. IN SPECIFICATIONS

SERVICE DESIGNATIONS

HW	POTABLE HOT WATER
RD	ROOF DRAIN
RWL	RAIN WATER LEADER
SPD	SUMP PUMP DISCHARGE
TWS	TEMPER WATER SUPPLY
TWR	TEMPER WATER RETURN
V	VENT
VTR	VENT THROUGH ROOF
W1	POTABLE COLD WATER

PLUMBING EQUIPMENT IDENTIFICATION

IDENTIFICATION	EQUIPMENT NAME
AC	AIR COMPRESSOR
D	SANITARY DRAIN
ANT	ACID NEUTRALIZATION TANK
BFP	BACK FLOW PREVENTER
BP	BOOSTER PUMP
CP	CIRCULATION PUMP
ET	EXPANSION TANK
ETP	TRAP PRIMER ASSEMBLY (ELECTRICALLY ACTUATED)
EWH	ELECTRIC WATER HEATER
HE	HEAT EXCHANGER
OWS	OIL/WATER SEPERATOR
P	PUMP
SP	SUMP PUMP
ST	STORAGE TANK
TV	TEMPERING VALVE
WT	WATER STORAGE TANK

EXAMPLE CALLOUT:

P - 101

FIXTURE LEGEND

SEQUENTIAL UNIT NUMBER

VALVE SYMBOLS

	HOSE VALVE
	REGULATED SIDE PRESSURE CONTROL
	DOUBLE CHECK VALVE
	REDUCED PRESSURE BACKFLOW PREVENTER
	NON FREEZE HOSE VALVE
	NON FREEZE HOSE VALVE WITH HOSE RACK
	SOLENOID VALVE
	TO TEMPERATURE SENSOR TEMPERATURE SENSING VALVE
	DRY VALVE WITH COMPRESSOR AND PRESSURE SWITCH
	PRE-ACTION VALVE DOUBLE INTERLOCKED W/COMPRESSOR AND PRESSURE SWITCH
	ALARM CHECK VALVE

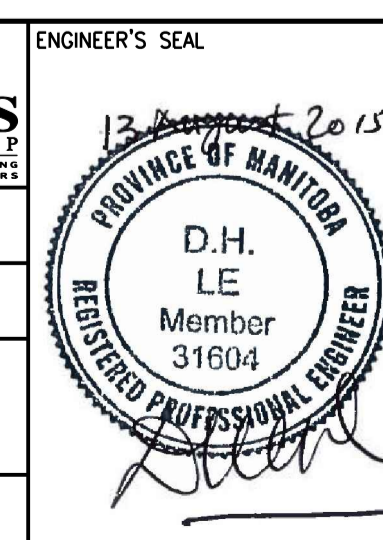
PLUMBING GENERAL NOTES

- THIS IS A STANDARD LEGEND, THEREFORE, SOME SYMBOLS AND ABBREVIATIONS MAY APPEAR ON THIS SHEET AND NOT ON THE DRAWINGS. REFER TO STANDARD DETAILS FOR EQUIPMENT, HOSE VALVE AND PIPING INSTALLATION DETAILS.
- FIXTURES LOCATED IN SLABS ON GRADE SHALL HAVE THEIR TRAPS AND HORIZONTAL TRAP ARMS CAST INTO THE FLOOR SLAB UNLESS INDICATED OTHERWISE.
- INSTALL BURIED AND CONCRETE ENCASED COPPER PIPING WITH A PROTECTIVE SLEEVE OR WRAP FOR ITS ENTIRE LENGTH. SLEEVE OR WRAP SHALL BE FLEXIBLE POLYETHYLENE MANUFACTURED FOR CONTINUOUS PIPE COVER APPLICATION. EXTEND SLEEVE OR WRAP 50mm ABOVE FINISHED FLOOR.
- PIPING ELEVATIONS SHOWN ARE APPROXIMATE. FIELD VERIFY PIPING ELEVATIONS WITH EXISTING CONDITIONS PRIOR TO INSTALLATION.
- THE CONTRACTOR SHALL PROVIDE OFFSETS IN THE PIPING RUNS WHERE REQUIRED TO CLEAR EXISTING AND NEW DUCT, STRUCTURE AND OTHER PIPING SYSTEMS.
- PLUMBING VENTS THROUGH ROOF SHALL BE OFFSET AT ROOF TO PROVIDE MINIMUM DISTANCE OF 1m FROM EXTERIOR WALL.
- REFER TO ARCHITECTURAL DRAWINGS FOR EXACT LOCATION OF PLUMBING FIXTURES AND ROOF DRAINS.
- CLEANOUT TO GRADE FITTINGS, WHERE SANITARY DRAIN EXITS THE BUILDING, SHALL ALLOW FOR RODDING BOTH WAYS.
- COORDINATE FINAL LOCATIONS OF FLOOR AND HUB DRAINS THAT RECEIVE CONDENSATE DRAINAGE FROM HVAC AND PROCESS EQUIPMENT.
- PROVIDE CLEANOUTS IN ROOF DRAIN PIPING, ROOF OVERFLOW DRAIN PIPING AND SANITARY WASTE PIPING AS SHOWN ON THE DRAWINGS. FURNISH AND INSTALL ADDITIONAL CLEANOUTS AS REQUIRED BY CODE.
- SLOPE SANITARY, ROOF, AND OVERFLOW PIPING AT 2% UNLESS OTHERWISE INDICATED ON FLOOR PLANS. WHERE FIELD CONDITIONS DO NOT ALLOW A 2% SLOPE, PROVIDE MINIMUM 1% SLOPE.
- IN SOME CASES, SANITARY SEWER LATERALS IN THE YARD ARE LARGER THAN THE PIPE SIZES SHOWN INSIDE A BUILDING. TRANSITION WITHIN 1.5m OF THE BUILDING WALL WHERE THAT OCCURS.



NO.	REVISIONS	DATE	DESIGN	CHECK
00	ISSUED FOR TENDER	08/2015	A.M.	J.C.

CH2MHILL.	
DESIGNED BY: D. LE	CHECKED BY: T. TRAN
DRAWN BY: K. FONG	APPROVED BY: D. LE
SCALE: NTS	ISSUED FOR CONSTRUCTION BY: T. TURZAK
DATE: 2015/08/13	DATE: 2015/08/13
CONSULTANT NO.: 474248	



ENGINEER'S SEAL		
THE CITY OF WINNIPEG Winnipeg WATER AND WASTE DEPARTMENT		
SOUTH END WATER POLLUTION CONTROL CENTRE SEWPC UPGRADING/EXPANSION PROJECT MECHANICAL LEGEND AND GENERAL NOTES (2)		
CITY DRAWING NUMBER	SHEET	REV. SIZE
1-0102-MDTL-A001	002	00 A1