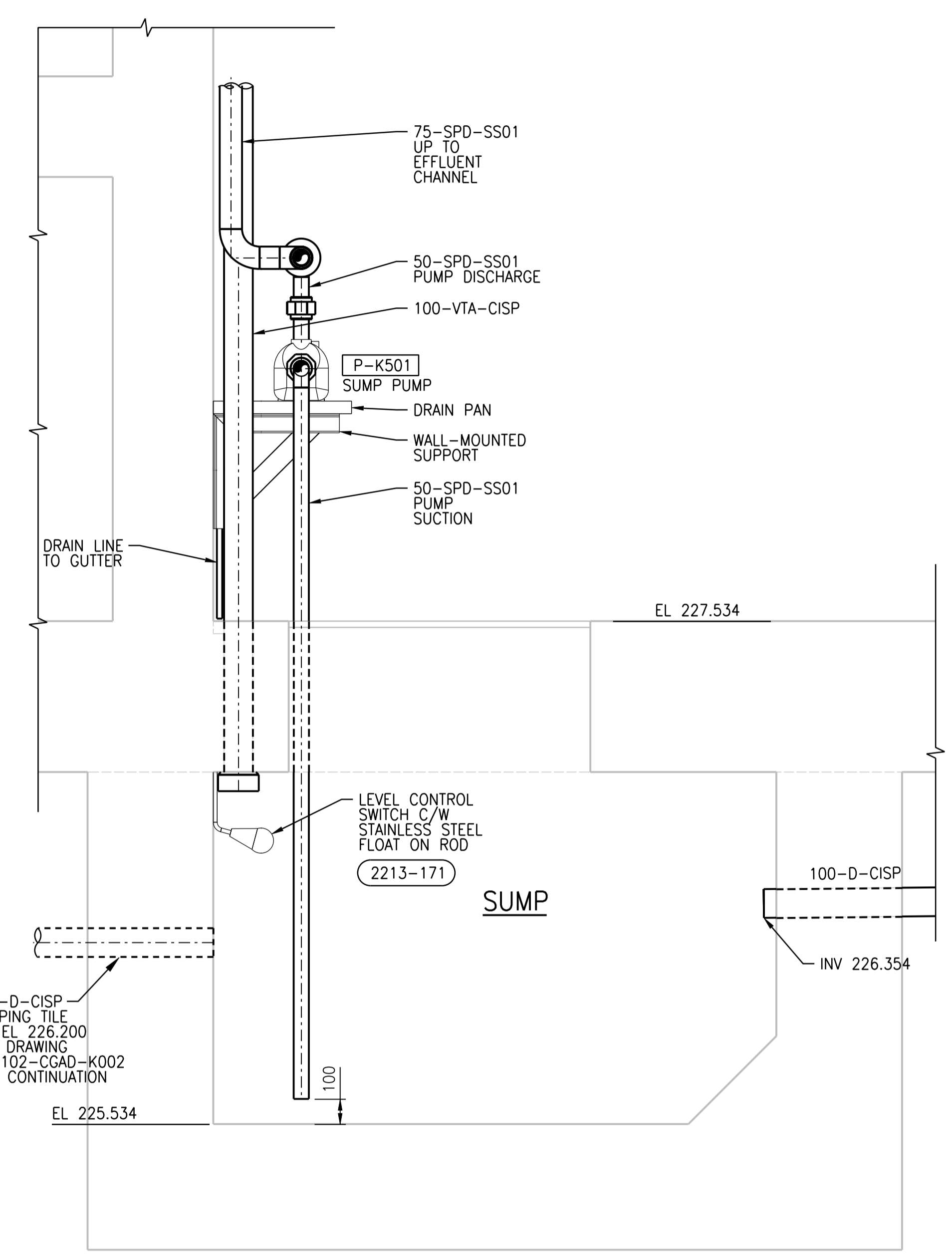
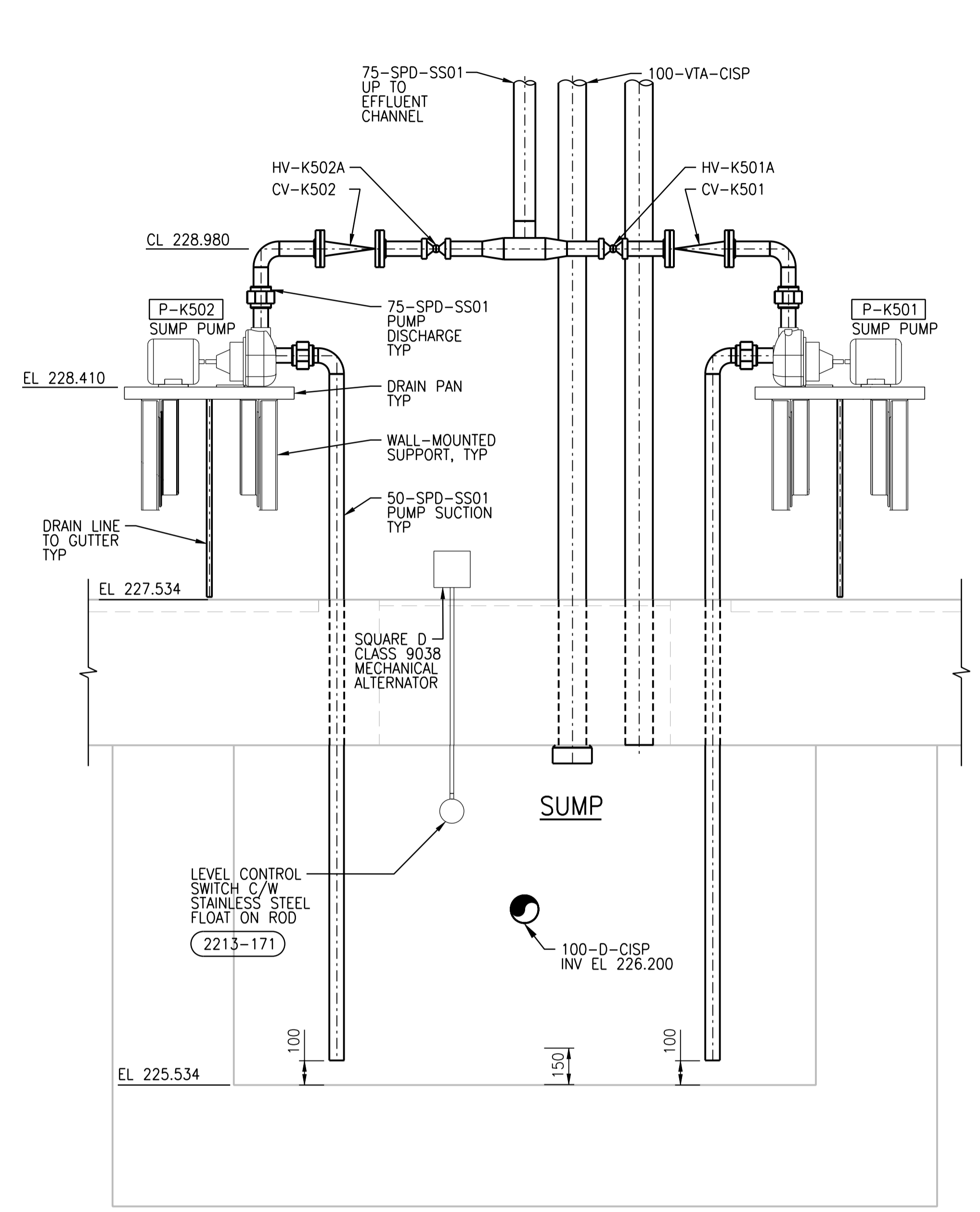


1 DETAIL
1:15
SGAD-K501



A SECTION
1:15

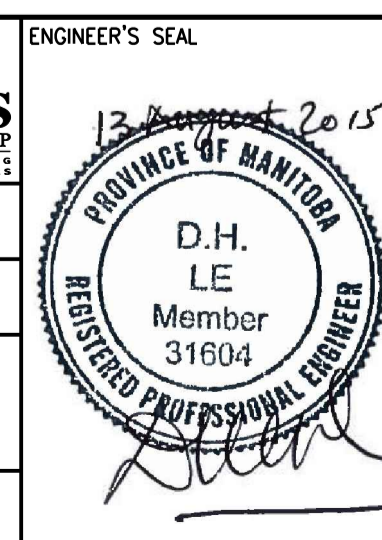


B SECTION
1:15



NO.	REVISIONS	DATE	DESIGN	CHECK
00	ISSUED FOR TENDER	08/2015	S.S.	J.C.

CH2MHILL.		KCS GROUP CONSULTING ENGINEERS	
DESIGNED BY: D. LE	CHECKED BY: D. LE	DESIGNED BY: R. ARCHER	APPROVED BY: T. TRAN
SCALE: 1:15	ISSUED FOR CONSTRUCTION BY: T. TURZAK	DATE: 2015/08/13	DATE: 2015/08/13
CONSULTANT NO.: 474248			



THE CITY OF WINNIPEG
WATER AND WASTE DEPARTMENT

SOUTH END WATER POLLUTION CONTROL CENTRE
SEWPC UPGRADE/EXPANSION PROJECT
MECHANICAL
HIGH RATE CLARIFICATION BUILDING
PLUMBING - SUMP DETAILED LAYOUT

CITY DRAWING NUMBER: 1-0102-MGAD-K504
SHEET: 00
REV.: 00
SIZE: A1