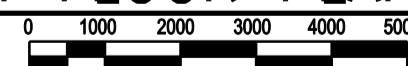
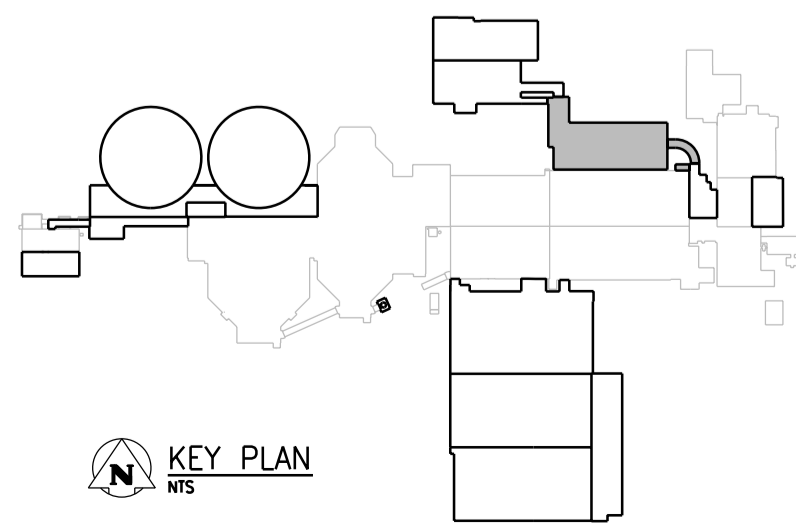


BASEMENT FLOOR PLAN

1:100



NOTE:
 1. REFER TO SHOP DRAWINGS PROVIDED BY VEOLIA WATER TECHNOLOGIES CANADA INC. FOR EQUIPMENT CONFIGURATIONS AND INSTALLATION DETAILS.



NO.	REVISIONS	DATE	DESIGN	CHECK
00	ISSUED FOR TENDER	08/2015	B.C.	J.C.

CH2MHILL.
SNC-LAVALIN

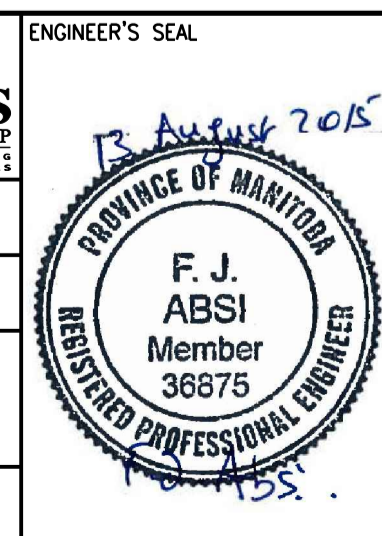
DESIGNED BY: J. KRAEMER
 CHECKED BY: J. KRAEMER

DRAWN BY: B. COOPER
 APPROVED BY: F. ABSI

SCALE: 1:100
 ISSUED FOR CONSTRUCTION BY: T. TURZAK

DATE: 2015/08/13
 DATE: 2015/08/13

CONSULTANT NO.: 474248



ENGINEER'S SEAL

13 August 2015

THE CITY OF WINNIPEG
 WATER AND WASTE DEPARTMENT

SOUTH END WATER POLLUTION CONTROL CENTRE
 SEWPCC UPGRADING/EXPANSION PROJECT
 PROCESS
 HIGH RATE CLARIFICATION BUILDING
 BASEMENT PLAN

CITY DRAWING NUMBER: 1-0102-PGAD-K001
 SHEET: 00
 REV: 00
 SIZE: A1