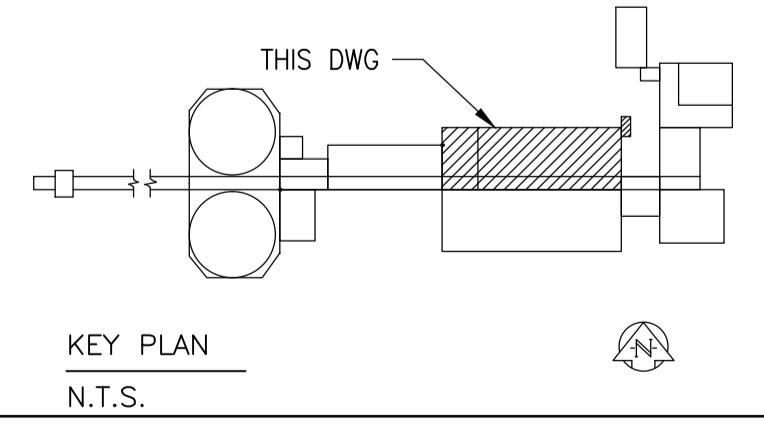
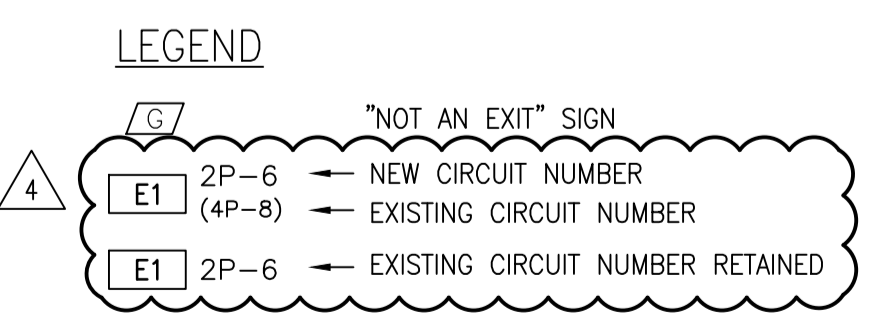


PLAN ELEV. 234 M



- DEMOLITION NOTES**
- (A) REMOVE EXISTING RED EXIT SIGN. REUSE EXISTING WIRING AND CONDUIT FOR NEW EXIT SIGN.
 - (B) REMOVE EXISTING 120V RED EXIT SIGN. REMOVE ASSOCIATED REDUNDANT (UN-USED) WIRING AND CONDUIT BACK TO SUPPLY. THE NEW EXIT SIGN WILL BE FED FROM 347V SOURCE.
 - (C) REMOVE ALL EXISTING LIGHTING AND CONTROLS IN STORAGE ROOM P113.
 - (D) REMOVE POWER-FREE RED EXIT SIGN IN STAIRWELL.
 - (E) REMOVE EXISTING EXIT SIGNS AND LIGHTING AS PART OF DEMOLITION OF STAIRS. PULL BACK WIRING/CONDUIT INTO THE REMAINING FACILITIES IN ORDER TO RE-USE EXISTING CIRCUIT AS INDICATED FOR NEW EXIT SIGNS AND LIGHTING IN NEW STAIRWELL. SEE DWG. 1-0102-ELTG-P001 FOR DETAILS. ENSURE WIRING ADJUSTMENTS DO NOT IMPACT OTHER LIGHTING IN FACILITY. RE-WIRE ALL SYSTEMS AS REQUIRED TO MAINTAIN ENTIRE FACILITY OPERATIONS.
- CONSTRUCTION NOTES**
- (1) SUPPLY AND INSTALL NEW RUNNING MAN EXIT SIGN. EXTEND EXISTING WIRING AND CONDUIT AS REQUIRED.
 - (2) SUPPLY AND INSTALL NEW HAZARDOUS RATED RUNNING MAN EXIT SIGN. EXTEND EXISTING WIRING AND CONDUIT AS REQUIRED.
 - (3) SUPPLY AND INSTALL NEW RUNNING MAN EXIT SIGN. INTERCEPT AND CONNECT TO NEAREST SUITABLE CONNECTION POINT (CIRCUIT SHOWN). EXTEND WIRING AND CONDUIT FOR CONNECTION TO NEW EXIT SIGN.
 - (4) REFER TO DRAWING XXX-XXXX FOR NEW LIGHT LAYOUT.
 - (5) SUPPLY AND INSTALL POWER-FREE PHOTOLUMINESCENT RUNNING MAN EXIT SIGN IN THE STAIRWELL DIRECTION AS SHOWN.

- GENERAL NOTES**
1. PNL-2P IS FED FROM NEW ARGES CENTRAL BATTERY SYSTEM ELB-2P. SEE DWG. 1-0102-ESLD-P002.
 2. REFER TO SCHEDULE ON DWG. 1-0102-ESCH-A001 FOR EXIT SIGN MODEL.



REFER TO DRAWING SEP-278 FOR FIXTURE SCHEDULE.

B.M. ELEV.		MaCLAREN ENGINEERS INC. WARDROP ENGINEERING INC.		PRELIMINARY NOT FOR CONSTRUCTION		THE CITY OF WINNIPEG WORKS AND OPERATIONS DIVISION WATERWORKS, WASTE & DISPOSAL DEPARTMENT	
4 ISSUED FOR TENDER		2015/08/12	VVE	DESIGNED BY: R. TIBOR		CHECKED BY:	
3 AS-BUILT, BID OPP. 209-2011		2012/05/01	TMC	DRAWN BY: B.C. TIANGSING / CAD		APPROVED BY:	
2 ADDED ESSENTIAL LIGHTING AND EXIT SIGNS		2011/03/11	TMC	HOR. SCALE: 1:100		RELEASED FOR CONSTRUCTION:	
1 AS CONSTRUCTED		05/01	B.T.	VERTICAL:		DATE: 88-12-20	
NO. REVISIONS		DATE	BY	DATE		DATE	
				CONSULTANT DRAWING NO. 870012-01-16-E103		SOUTH END WATER POLLUTION CONTROL CENTRE PRIMARY CLARIFIER EXPANSION - ELECTRICAL EXISTING CLARIFIERS- EL.234 M & 238 M ELECTRICAL - LIGHTING	
						CITY DRAWING NUMBER	
						SHEET OF	
						SEP-277	