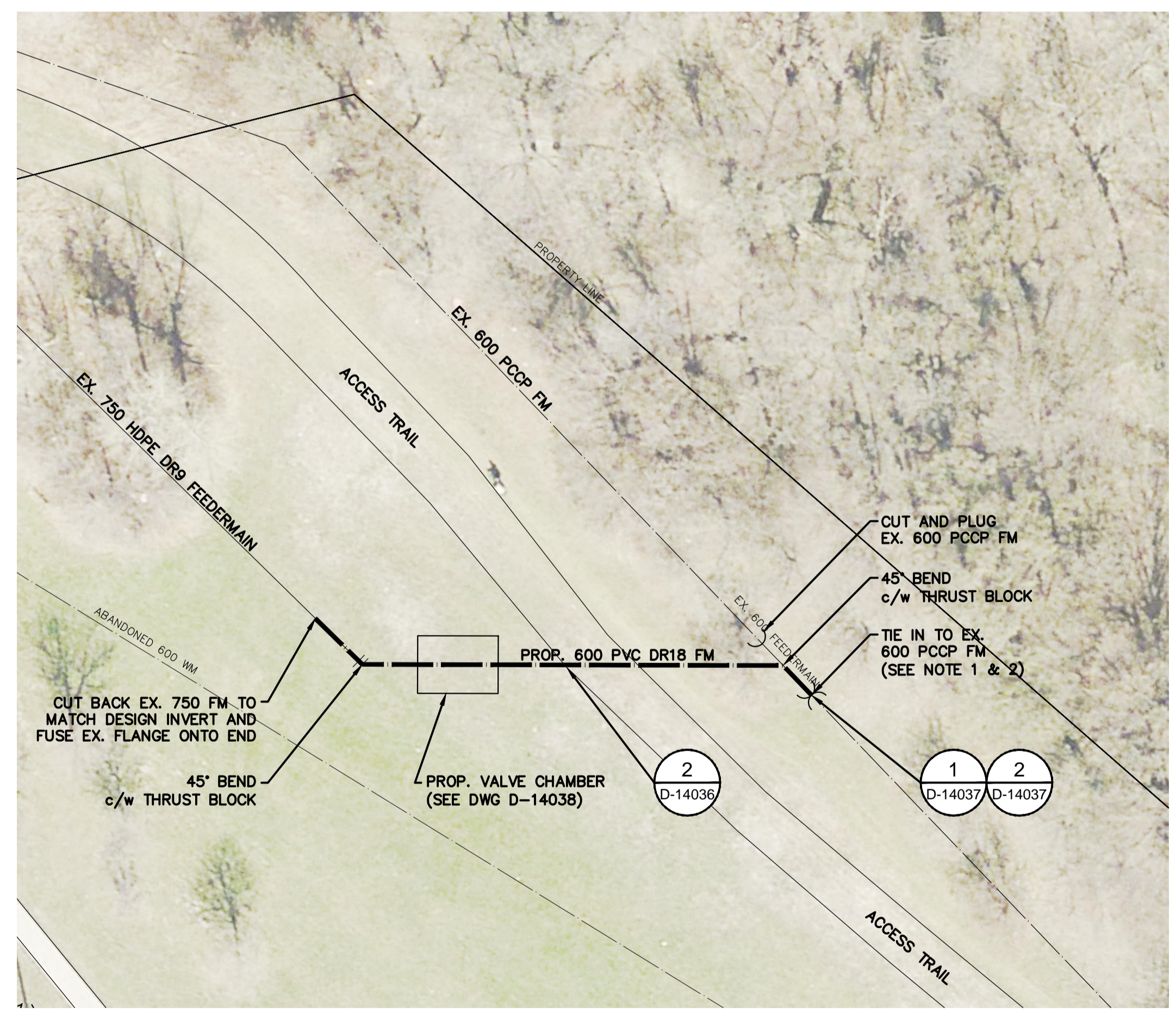
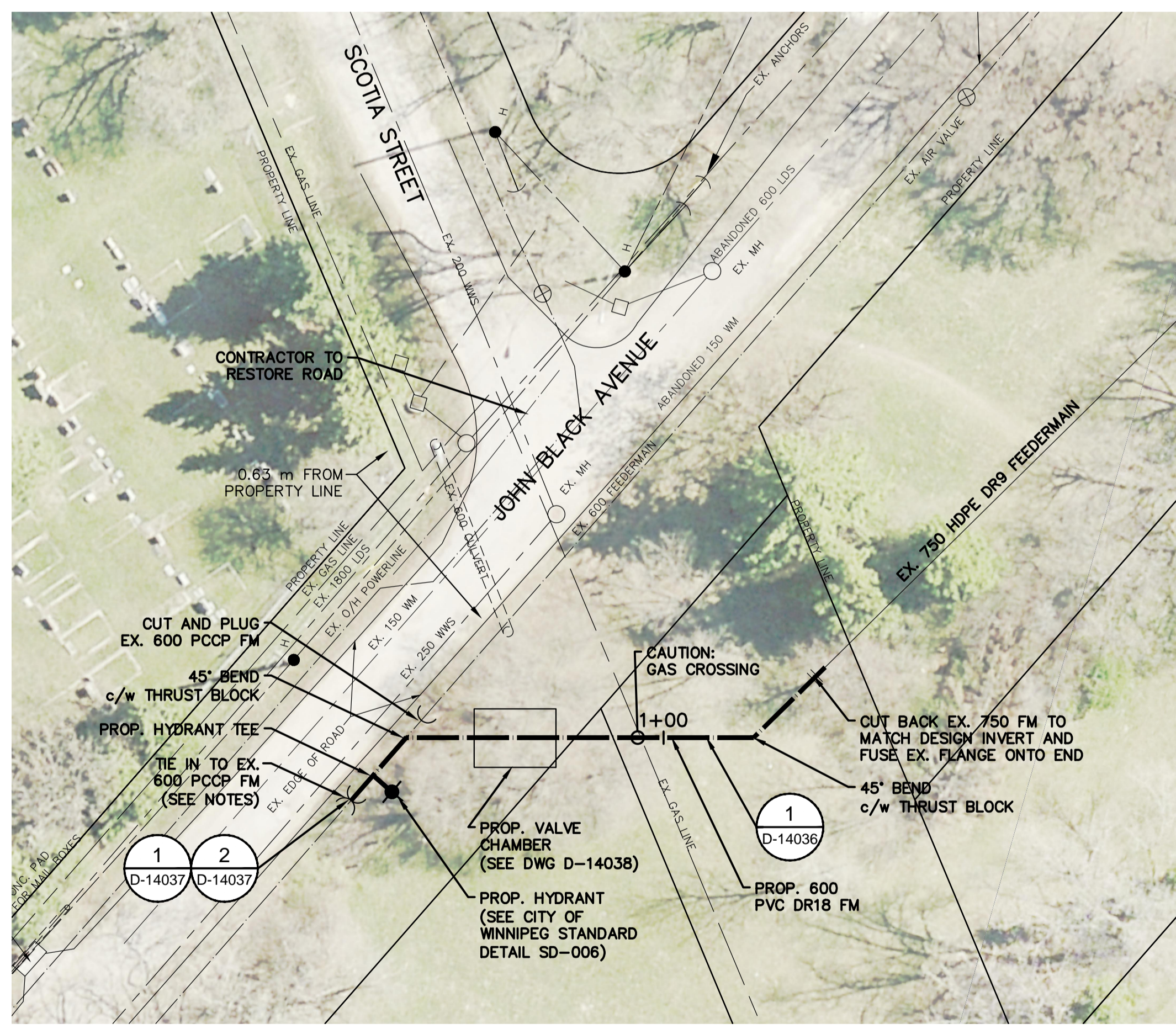
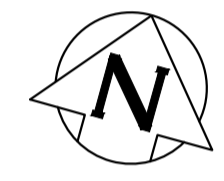
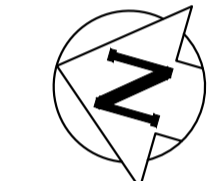


WEST SIDE CONNECTION

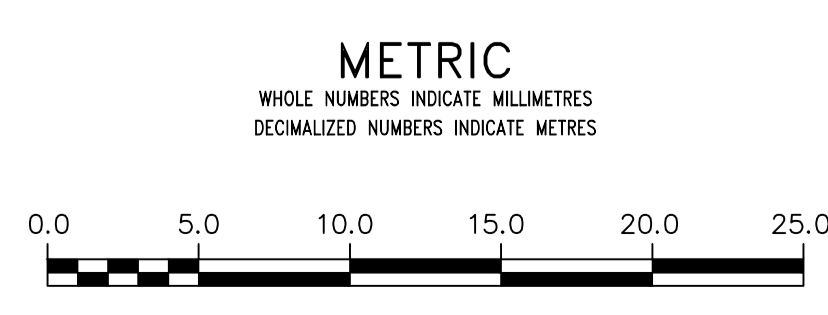
EAST SIDE CONNECTION

NOTE: CHAINAGES SHOWN ARE ALONG CENTERLINE OF PIPE LINE



GENERAL NOTES:

1. TIE-IN POINT TO EXISTING PCCP TO BE CONFIRMED WITH AND APPROVED BY THE CITY.
2. PCCP TIE-IN LOCATIONS APPROXIMATE ONLY. TIE-INS TO OCCUR AT CLOSEST JOINT LOCATION.
3. CONTRACTOR TO RESTORE ALL ROAD SURFACES DAMAGED DURING CONSTRUCTION.
4. CONTRACTOR SHALL BE AWARE THAT THE AREA AROUND THE EXISTING 750 FLANGES HAVE BEEN PREVIOUSLY EXCAVATED TO DEPTHS EXCEEDING 4.0 m.
5. CONTRACTOR SHALL SUPPLY ALL NEW HARDWARE FOR THE HDPE FLANGED CONNECTION. NO EXISTING HARDWARE SHALL BE REUSED.
6. EXISTING FEEDERMAIN IS CURRENTLY CHARGED (PRESSURIZED) ON BOTH SIDES.
7. BACKFILL WITH FROZEN MATERIAL IS STRICTLY PROHIBITED. NON-FROZEN MATERIAL, OR A SUITABLE FILLCRETE MATERIAL, IS TO BE USED FOR BACKFILLING TRENCHES.



WARNING
 IF POWER EQUIPMENT OR EXPLOSIVES ARE TO BE USED FOR EXCAVATION ON THIS PROJECT THE CONTRACTOR MUST:
 1) NOTIFY THE GAS COMPANY OF THE PROPOSED LOCATION OF EXCAVATION.
 2) TAKE PRECAUTION TO AVOID DAMAGE TO GAS COMPANY INSTALLATIONS.
 SEE PROVINCIAL REGULATION 210/72 FOR DETAILS

LOCATION APPROVED
 UNDERGROUND STRUCTURES
 SUPV. U/G STRUCTURES DATE
 COITTEE
 NOTE:
 LOCATION OF UNDERGROUND STRUCTURES AS SHOWN ARE BASED ON THE BEST INFORMATION AVAILABLE BUT NO GUARANTEE IS GIVEN THAT ALL EXISTING UTILITIES ARE SHOWN OR THAT THE GIVEN LOCATIONS ARE EXACT. CONFIRMATION OF EXISTENCE AND EXACT LOCATION OF ALL SERVICES MUST BE OBTAINED FROM THE INDIVIDUAL UTILITIES BEFORE PROCEEDING WITH CONSTRUCTION.

B.M. ELEV.	
CONSTRUCTION COMPLETION DATE: YYYY MM DD	
DESIGNED BY	CL
CHECKED BY	JL
DRAWN BY	DP
APPROVED BY	JL
SCALE:	
HORIZONTAL	1:250
VERTICAL	1:50
DATE	2016 01 11
NO.	REVISIONS
	DATE
	BY

Associated Engineering

DESIGNED BY: CL
 CHECKED BY: JL
 DRAWN BY: DP
 APPROVED BY: JL
 SCALE: HORIZONTAL 1:250, VERTICAL 1:50
 DATE: 2016 01 11
 PLOT DATE: 2016 01 11

ENGINEER'S SEAL
 PROVINCE OF MANITOBA
 J.S. LUEKE
 Member 36827
 REGISTERED PROFESSIONAL ENGINEER
 Jan 11, 2016
 CONSULTANT DRAWING NUMBER: 20134376

THE CITY OF WINNIPEG
 WATER AND WASTE DEPARTMENT
 ENGINEERING DIVISION
 NORTH KILDONAN FEEDERMAIN
 VALVE CHAMBERS AND CONNECTIONS
 CONNECTIONS
 TIE IN TO 600 FEEDERMAIN

SHEET 3 OF 9
 CITY DRAWING NUMBER: D-14035