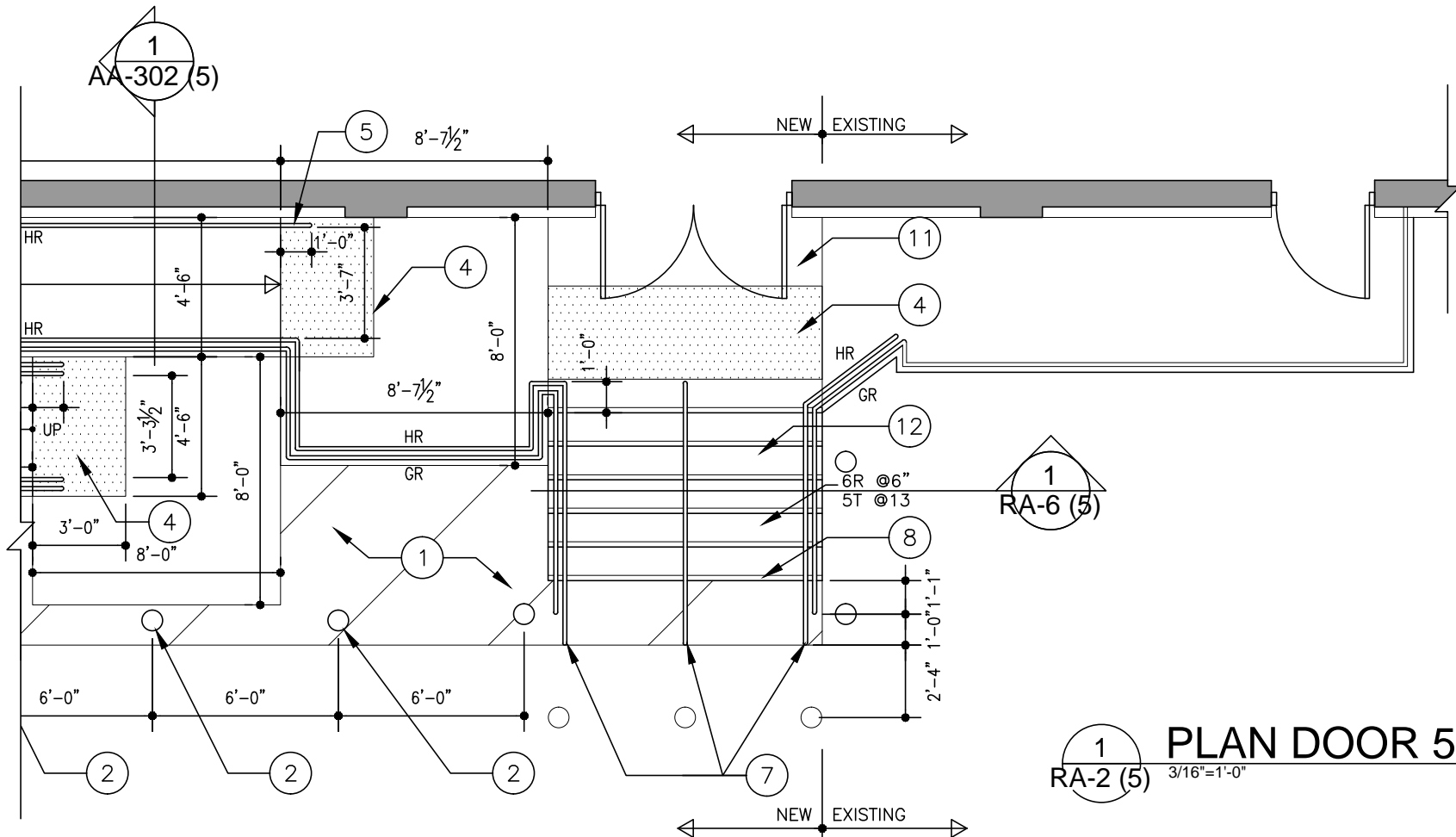


CONSTRUCTION NOTES

- 11 REMOVE & REPLACE CONCRETE SURFACE – CAST IN NEW DETECTABLE WARNING SURFACE AS INDICATED. USE MAPCEM QUICK PATCH, BY MAPEI OR OTHER HI-BOND CONCRETE PATCH SYSTEM AS APPROVED BY STRUCTURAL ENGINEER.
- 12 REMOVE & REPLACE EXISTING CONCRETE TREADS & RISERS – DOWEL INTO EXISTING CONCRETE BEAM BELOW – CAST IN NOSING AS INDICATED.

PROJECT NO.: 2104052-F
 DRAWN BY: ZN
 CHECKED BY: JV
 SCALE: 3/16"=1'-0"
 ISSUED FOR: CONSTRUCTION
 ISSUE DATE: AUGUST 10, 2015
RA-2 (5)
 DATE PLOTTED: 8/10/15



PLAN DOOR 5
 SCALE: 3/16"=1'-0"

CITY OF WINNIPEG
 CENTRAL FREIGHT HOUSE
 WHEELCHAIR RAMP AND STAIR RETROFIT - DOOR 5
 WINNIPEG, MANITOBA

1
RA-2 (5)
 3/16"=1'-0"

John van Leeuwen
 Architecture and Design
 2100 St. James Street West
 Winnipeg, MB R2C 1V4
 PH: 204.592.7443