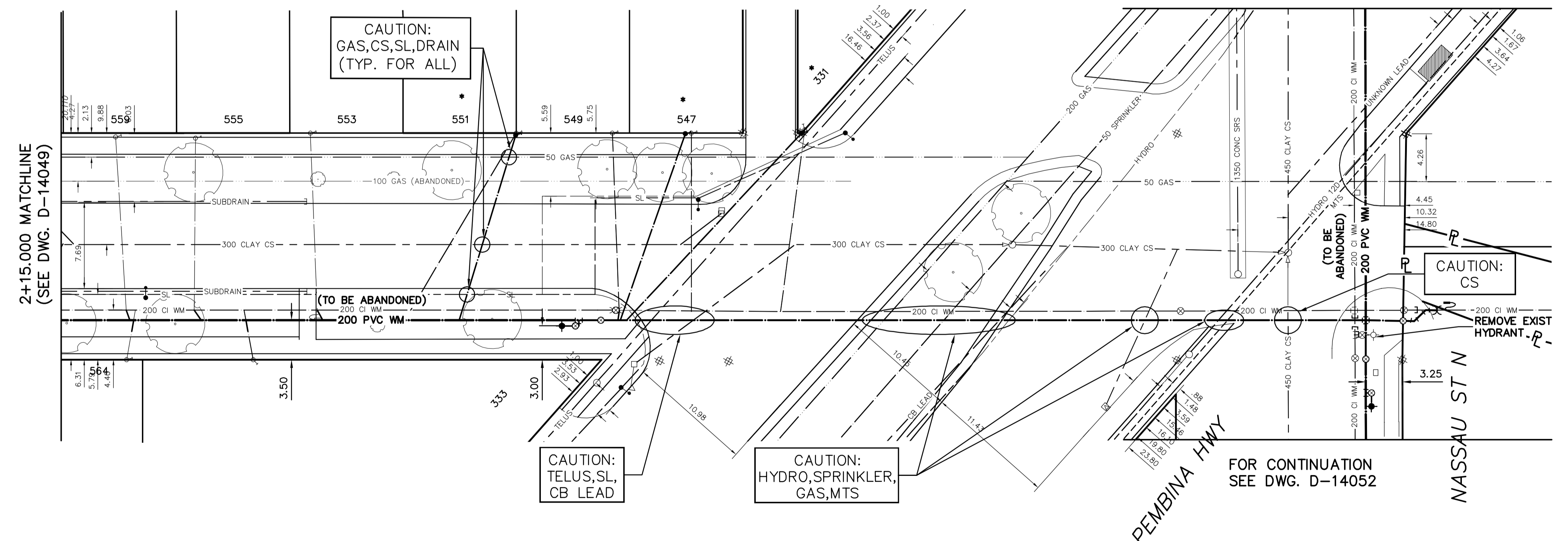


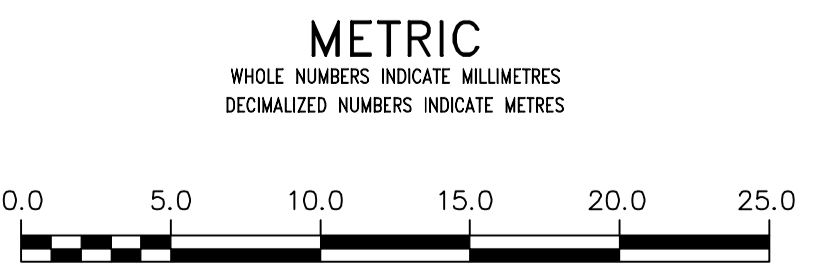
NOTE: CHAINAGES SHOWN ARE ALONG S. PL OF MULVEY AVE.

MULVEY AVENUE

FOR CONTINUATION SEE DWG. D-14051



FOR SERVICE TABLE (SEE D-14049) FOR INDEX (SEE D-14045)



WARNING

IF POWER EQUIPMENT OR EXPLOSIVES ARE TO BE USED FOR EXCAVATION ON THIS PROJECT THE CONTRACTOR MUST:

- NOTIFY THE GAS COMPANY OF THE PROPOSED LOCATION OF EXCAVATION.
- TAKE PRECAUTION TO AVOID DAMAGE TO GAS COMPANY INSTALLATIONS.

SEE PROVINCIAL REGULATION 210/72 FOR DETAILS

LOCATION APPROVED UNDERGROUND STRUCTURES

SUPV. U/G STRUCTURES COMMITTEE DATE

NOTE:
LOCATION OF UNDERGROUND STRUCTURES AS SHOWN ARE BASED ON THE BEST INFORMATION AVAILABLE BUT NO GUARANTEE IS GIVEN THAT ALL EXISTING UTILITIES ARE SHOWN OR THAT THE GIVEN LOCATIONS ARE EXACT. CONFIRMATION OF EXISTENCE AND EXACT LOCATION OF ALL SERVICES MUST BE OBTAINED FROM THE INDIVIDUAL UTILITIES BEFORE PROCEEDING WITH CONSTRUCTION.

B.M.	ELEV.	DESIGNED BY		CHECKED BY	
		MK		SC	
REVISIONS		DATE	BY		
NO.					

DESIGNED BY: MK
CHECKED BY: SC

DRAWN BY: RS
APPROVED BY: SC

SCALE:
HORIZONTAL 1:250
VERTICAL 1:50

DATE: 2015 07 23
PLOT DATE: 2015 07 23

RELEASED FOR CONSTRUCTION

ENGINEER'S SEAL

ORIGINAL SIGNED BY
S.J.R. COURNOYER
15/07/23

CONSULTANT DRAWING NUMBER

THE CITY OF WINNIPEG
WATER AND WASTE DEPARTMENT
ENGINEERING DIVISION

2015 SUPPLEMENTAL WATERMAIN RENEWALS
CONTRACT 14

MULVEY AVENUE
49 W OF PEMBINA HIGHWAY TO
E PL OF PEMBINA HIGHWAY

SHEET **6** OF **11**
CITY DRAWING NUMBER **D-14050**