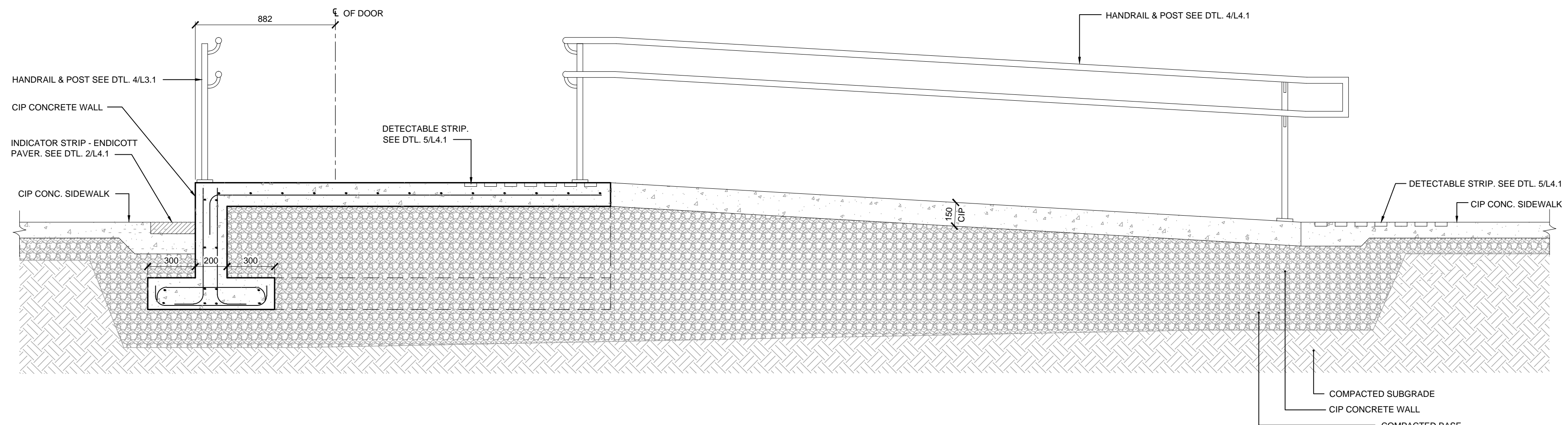


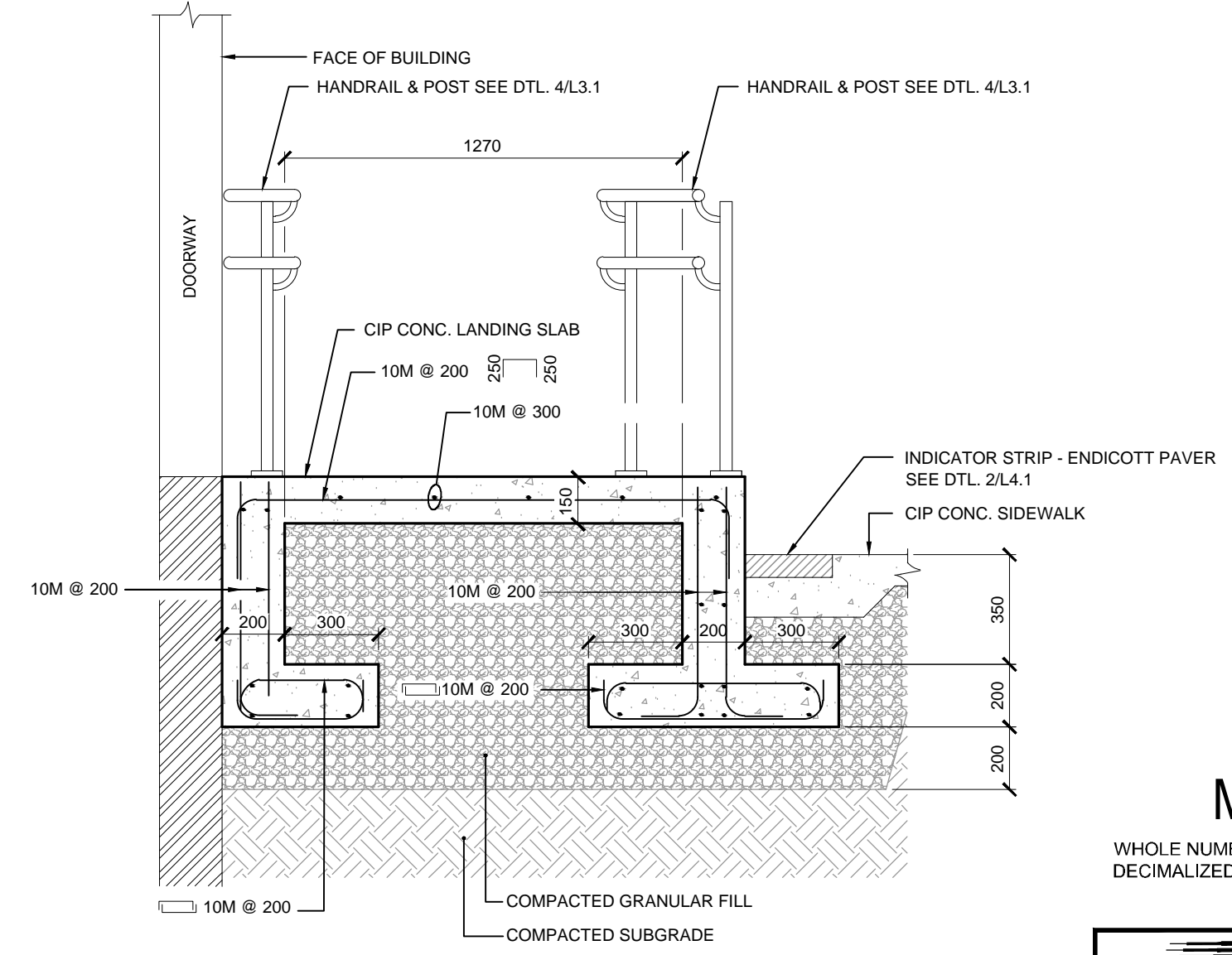
- GENERAL NOTES:**
- DESIGN IS IN ACCORDANCE WITH THE NATIONAL BUILDING CODE OF CANADA, 2010 EDITION PLUS MANITOBA AMENDMENTS.
  - CONTRACTOR TO VERIFY UNDERGROUND UTILITIES AND STRUCTURES PRIOR TO CONSTRUCTION.
- CAST IN PLACE CONCRETE:**
- TO BE READ IN CONJUNCTION WITH CW 2160 AND AS AMENDED IN ACCORDANCE WITH THESE NOTES.
  - CONCRETE MIX:
 

a. CLASS OF EXPOSURE:	S-1
b. MINIMUM COMPRESSIVE STRENGTH AT 28 DAYS:	35MPa
c. MAXIMUM SLUMP:	80mm ± 20mm
d. AIR CONTENT:	5 - 8%
e. MAXIMUM WATER/CEMENT RATIO:	0.40
  - CONCRETE COVER = 50mm UNLESS OTHERWISE STATED.
  - ALL EXTERIOR CORNERS CHAMFERED 20mm.
- REINFORCING STEEL:**
- TO BE READ IN CONJUNCTION WITH CW 2160 AND AS AMENDED IN ACCORDANCE WITH THESE NOTES.
  - ALL REINFORCING STEEL SHALL CONFORM TO CSA G30.18M, GRADE 400W.
  - ALL CONCRETE REINFORCING WORK SHALL BE PERFORMED IN ACCORDANCE WITH CSA A23.1.
  - LAPS IN BARS SHALL BE AT LEAST 40 BAR DIAMETERS, REINFORCING SPLICES NOT INDICATED IN THE DRAWINGS SHALL BE LOCATED AT POINTS OF MINIMUM STRESS.
  - BEFORE PLACING CONCRETE, REINFORCING TO BE CLEAN, FREE OF LOOSE SCALE, DIRT OR OTHER FOREIGN MATTER THAT WOULD REDUCE OR PREVENT BOND TO THE CONCRETE.

**1 PLAN**  
S01  
SCALE : 1:20



**2 SECTION A-A - LANDING AND RAMP**  
S01  
SCALE : 1:20



**3 SECTION B-B - LANDING**  
S01  
SCALE : 1:20

**METRIC**  
WHOLE NUMBERS INDICATE MILLIMETRES  
DECIMALIZED NUMBERS INDICATE METRES

**APEGM**  
Certificate of Authorization  
MMM Group Limited  
No. 4531

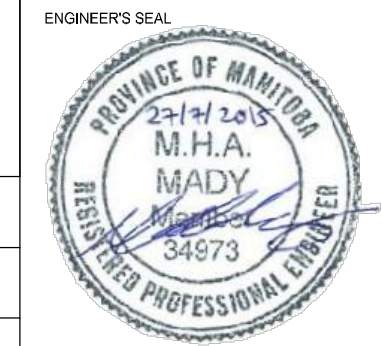
Jul 27, 2015 5:06pm  
 P:\315001-515002\315002\Drawings\MM Group\2015 NE Exchange\MM Drawings\2015 NE Exchange\2015-07-27\315002-01.dwg - CIP CONCRETE RAMP DETAILS - S01

NOTE:  
These design documents are prepared solely for the use by the party with whom the design professional has entered into a contract and there are no representations of any kind made by the design professional to any party with whom the design professional has not entered into a contract.

G.S.M. -					
ELEV. -					
F					
E					
D					
C					
B					
A	ISSUED FOR TENDER	28/07/15	MM		
NO.	REVISIONS	DATE	BY	DATE	2015.07.27



MMM Group Limited.  
Suite 111 - 93 Lombard Ave.  
Winnipeg, MB R3B 3B1  
t. 204.943.3178  
f. 204.943.4948  
www.mmm.ca



**THE CITY OF WINNIPEG**  
PUBLIC WORKS DEPARTMENT  
ENGINEERING SERVICES DIVISION

CITY OF WINNIPEG  
2015 NORTH EAST EXCHANGE DISTRICT STREET RENEWALS  
RAMP - 111 RORIE STREET  
CONCRETE DETAILS & REINFORCING

CITY DRAWING NUMBER	
SHEET	1 OF 1
BID NO.	669-2015