

**REFERENCE NOTES**

- PAVEMENT DIMENSIONS ARE TO BACK OF CURB
- BASELINE IS 12.0M NORTH OF SOUTH PROPERTY LINE
- PROPERTY LINES OBTAINED FROM THE CITY OF WINNIPEG L.B.I.S., AND NO SCALE FACTOR WAS APPLIED
- REFER TO AECOM FIELD BOOK NO. 4821, 4822 & 4823

**CONSTRUCTION NOTES:**

- PLANE EXISTING ASPHALT AND CONSTRUCT NEW ASPHALTIC PAVEMENT OVERLAY TYPE 1A (AVERAGE THICKNESS 85mm)
- REMOVE EXISTING PAVEMENT AND CONSTRUCT NEW 200mm REINFORCED CONCRETE PAVEMENT c/w 85mm TYPE 1A ASPHALT OVERLAY
- REMOVE EXISTING CONCRETE SIDEWALK AND CONSTRUCT NEW 100mm SIDEWALK c/w PAVING STONE BAND (SEE DETAIL 1)
- RENEW EXISTING MONOLITHIC CURB RAMP (10mm HT. INTEGRAL)
- CONSTRUCT NEW MODIFIED BARRIER CURB (150mm AVG. HT. REVEAL, DOWELLED)
- REMOVE EXISTING BARRIER CURB
- RENEW EXISTING BARRIER CURB (100mm AVG. HT. REVEAL)
- INSTALL NEW DETECTABLE SURFACE WARNING TILES
- REMOVE AND INSTALL NEW MTS MANHOLE FRAME AND COVER c/w 50mm CAST IRON RISER RING
- ADJUST EXISTING HYDRO MANHOLE (BY OTHERS)
- ADJUST EXISTING CURB STOP TO GRADE
- ADJUST EXISTING VALVE BOX
- REMOVE EXISTING CATCHBASIN AND CURB INLET
- INSTALL NEW CURB AND GUTTER INLET c/w CATCHBASIN (SD-024) AND CONNECT TO EXISTING LEAD
- REGRADE EXISTING PAVING STONES
- REMOVE AND REINSTALL EXISTING BENCH (BY OTHERS)
- ABANDON EXISTING INLET
- INSTALL NEW CURB AND GUTTER INLET c/w CATCHPIT (SD-023) AND CONNECT TO EXISTING CATCHBASIN
- REMOVE AND REINSTALL EXISTING GARBAGE BIN (BY OTHERS)
- INSTALL STREET LIGHTING CONDUIT AS DIRECTED. NEW LIGHT STANDARD BASES INSTALLED BY OTHERS
- ABANDON EXISTING HYDRO MANHOLE BY OTHERS

EXISTING	LEGEND - PLAN	PROPOSED	EXISTING	LEGEND - PLAN	PROPOSED	EXISTING	LEGEND - PROFILE	PROPOSED
150 mm W.M.	WATERMAIN	150 mm W.M.	HYDRO	C PROFILE			LOCATION APPROVED	
Hydrant	HYDRANT	Hydrant	M.T.S.	SOUTH/EAST GUTTER			UNDERGROUND STRUCTURES	
Valve	VALVE	Valve	CONCRETE	MEDIAN GUTTER				
300mm L.D.S.	LAND DRAINAGE SEWER	300mm L.D.S.	ASPHALT	N/W PROPERTY LINE				
250mm W.W.S.	WASTEWATER SEWER	250mm W.W.S.	PROPERTY LINE	S/E PROPERTY LINE				
Manhole	MANHOLE	Manhole	SURVEY BAR					
Catch Basin	CATCH BASIN	Catch Basin	ELEVATION					
Curb Inlet	CURB INLET	Curb Inlet	TREE					
Building Outline	BUILDING OUTLINE	Building Outline	SIDEWALK RAMP					
Culvert	CULVERT	Culvert	CONCRETE SIDEWALK					
Gas	GAS	Gas	FENCE					

**LOCATION APPROVED UNDERGROUND STRUCTURES**

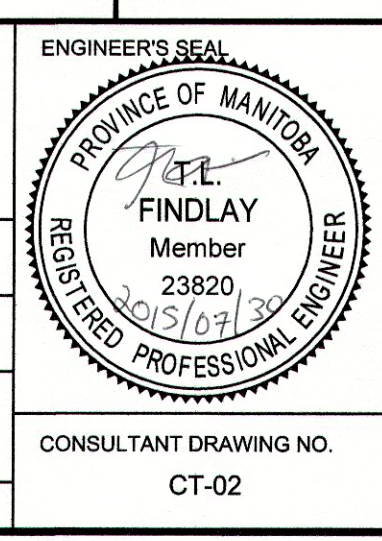
SUPV. U/G STRUCTURES COMMITTEE DATE

**NOTE:**  
LOCATION OF UNDERGROUND STRUCTURES AS SHOWN ARE BASED ON THE BEST INFORMATION AVAILABLE. BUT NO GUARANTEE IS GIVEN THAT ALL EXISTING UTILITIES ARE SHOWN OR THAT THE GIVEN LOCATIONS ARE EXACT. CONFIRMATION OF EXISTENCE AND EXACT LOCATION OF ALL SERVICES MUST BE OBTAINED FROM THE INDIVIDUAL UTILITIES BEFORE PROCEEDING WITH CONSTRUCTION.

B.M. 89R581 ELEV. 232.540	S.W. corner Portage Ave. & Sprague St., Tilt on pipe. 4.8m E. of W.L. Sprague St. produced from the W. along the S.L. of Portage Ave.		
0	ISSUED FOR TENDER	2015/07/30	BC
A	ISSUED FOR REVIEW	2015/07/24	KWR
NO.	REVISIONS	DATE	BY

**AECOM**

DESIGNED BY: BC  
CHECKED BY: KWR  
DRAWN BY: RT, PB  
APPROVED BY:  
HOR. SCALE: 1:250  
VERTICAL: 1:10  
RELEASED FOR CONSTRUCTION BY:  
DATE: 2014/03/25



**METRIC**  
WHOLE NUMBERS INDICATE MILLIMETRES  
DECIMALIZED NUMBERS INDICATE METRES

**THE CITY OF WINNIPEG**  
PUBLIC WORKS DEPARTMENT  
ENGINEERING DIVISION

PORTAGE AVENUE  
MARYLAND STREET TO FURBY STREET  
PAVEMENT REHABILITATION

EASTBOUND TRAFFIC LANES  
PLAN AND PROFILE  
MARYLAND STREET TO STATION 2+920

CITY DRAWING NUMBER: P-3469-02  
SHEET 02 OF 10

CONSULTANT DRAWING NO. CT-02