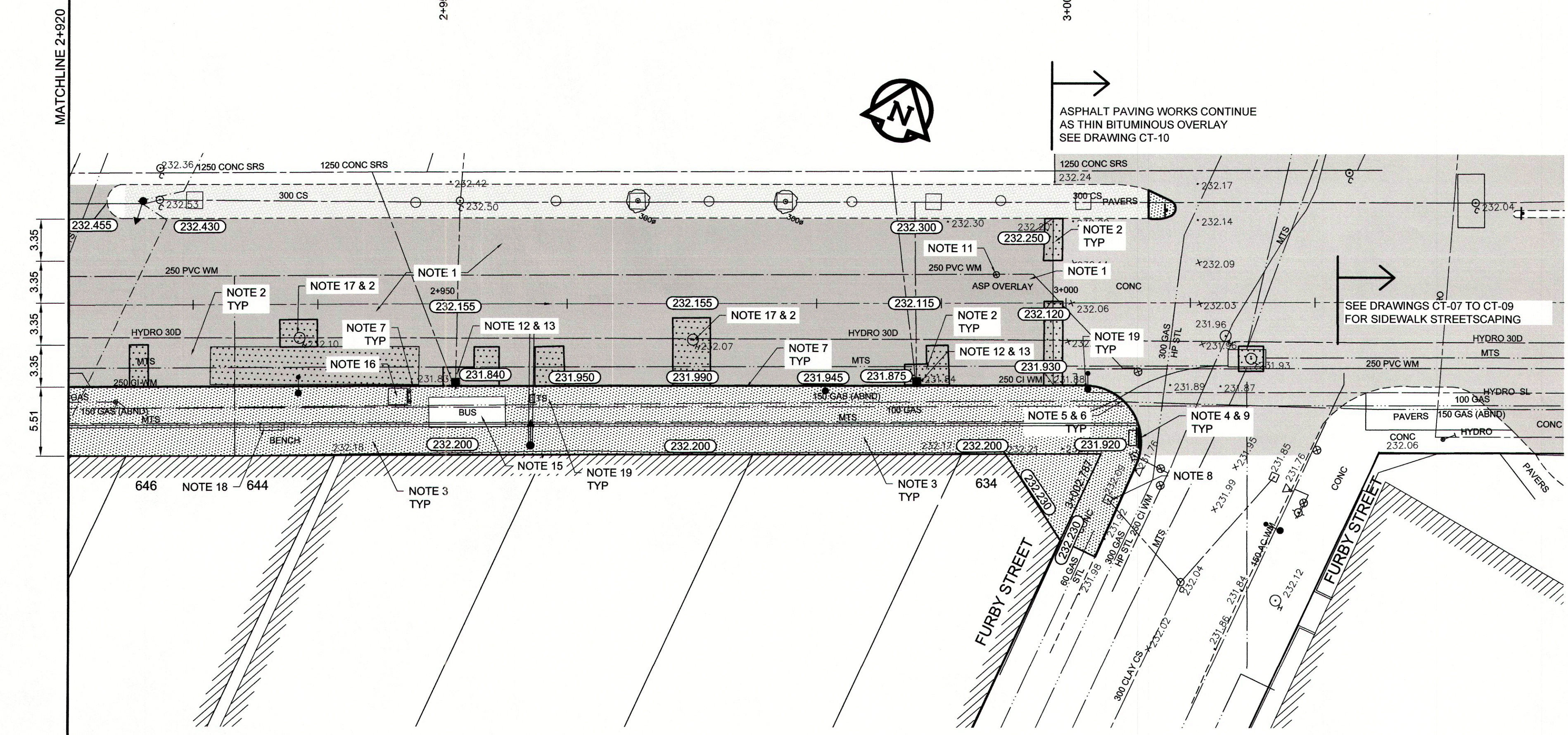


- REFERENCE NOTES**
- PAVEMENT DIMENSIONS ARE TO BACK OF CURB
 - BASELINE IS 12.0M NORTH OF SOUTH GUTTER
 - PROPERTY LINES OBTAINED FROM THE CITY OF WINNIPEG L.B.I.S., AND NO SCALE FACTOR WAS APPLIED
 - REFER TO AECOM FIELD BOOK NO. 4821, 4822 & 4823

- CONSTRUCTION NOTES:**
- PLANE EXISTING ASPHALT AND CONSTRUCT NEW ASPHALTIC PAVEMENT OVERLAY TYPE 1A (AVERAGE THICKNESS 85mm)
 - REMOVE EXISTING PAVEMENT AND CONSTRUCT NEW 200mm REINFORCED CONCRETE PAVEMENT c/w 85mm TYPE 1A ASPHALT OVERLAY
 - REMOVE EXISTING CONCRETE SIDEWALK AND CONSTRUCT NEW 100mm SIDEWALK c/w PAVING STONE BAND (SEE DETAIL 1)
 - RENEW EXISTING MONOLITHIC CURB RAMP (10mm HT. INTEGRAL)
 - CONSTRUCT NEW MODIFIED BARRIER CURB (150mm AVG. HT. REVEAL DOWELLED)
 - REMOVE EXISTING BARRIER CURB
 - RENEW EXISTING BARRIER CURB (100mm AVG. HT. REVEAL)
 - ADJUST EXISTING CATCH BASIN/MANHOLE TO GRADE
 - INSTALL NEW DETECTABLE SURFACE WARNING TILES
 - ADJUST EXISTING HYDRO MANHOLE (BY OTHERS)
 - ADJUST EXISTING VALVE BOX
 - REMOVE EXISTING CATCHBASIN AND CURB INLET
 - INSTALL NEW CURB AND GUTTER INLET c/w CATCHBASIN (SD-024) AND CONNECT TO EXISTING LEAD
 - REGRADE EXISTING PAVING STONES
 - REMOVE AND REINSTALL EXISTING BUS SHELTER (BY OTHERS)
 - INSTALL PAVING STONE (SEE DETAIL 2)
 - EXISTING HYDRO/MTS MANHOLE ABANDONED (BY OTHERS)
 - REMOVE AND REINSTALL EXISTING BENCH (BY OTHERS)
 - INSTALL STREET LIGHTING CONDUIT AS DIRECTED. NEW LIGHT STANDARD BASES INSTALLED BY OTHERS



EXISTING	LEGEND - PLAN	PROPOSED	EXISTING	LEGEND - PLAN	PROPOSED	EXISTING	LEGEND - PROFILE	PROPOSED
150mm W.M.	WATERMAIN	150mm W.M.	---	HYDRO	---	---	C PROFILE	---
300mm L.D.S.	HYDRANT	300mm L.D.S.	+	M.T.S.	+	---	SOUTH/EAST GUTTER	---
250mm W.W.S.	VALVE	250mm W.W.S.	+	CONCRETE	+	---	MEDIAN GUTTER	---
	LAND DRAINAGE SEWER		---	ASPHALT	---	---	N/W PROPERTY LINE	---
	WASTEWATER SEWER		---	PROPERTY LINE	---	---	S/E PROPERTY LINE	---
	MANHOLE		○	SURVEY BAR	○	---		
	CATCH BASIN		□	ELEVATION	□	---		
	CURB INLET		▽	TREE	▽	---		
	BUILDING OUTLINE		---	SIDEWALK RAMP	---	---		
	CULVERT		---	CONCRETE SIDEWALK	---	---		
	GAS		---	FENCE	---	---		

LOCATION APPROVED UNDERGROUND STRUCTURES

SUPPLY UNDERGROUND STRUCTURES COMMITTEE DATE

NOTE:
LOCATION OF UNDERGROUND STRUCTURES AS SHOWN ARE BASED ON THE BEST INFORMATION AVAILABLE BUT NO GUARANTEE IS GIVEN THAT ALL EXISTING UTILITIES ARE SHOWN OR THAT THE GIVEN LOCATIONS ARE EXACT. CONFIRMATION OF EXISTENCE AND EXACT LOCATION OF ALL SERVICES MUST BE OBTAINED FROM THE INDIVIDUAL UTILITIES BEFORE PROCEEDING WITH CONSTRUCTION.

B.M. 89R581	S.W. corner Portage Ave. & Sprague St. 10m on pipe.		
ELEV. 232.540	4.8m E. of W.L. Sprague St. produced from the W. along the S.L. of Portage Ave.		
0	ISSUED FOR TENDER	2015/07/30	BC
A	ISSUED FOR REVIEW	2015/07/24	KWR
NO.	REVISIONS	DATE	BY

AECOM

DESIGNED BY BC CHECKED BY KWR

DRAWN BY RT, PB APPROVED BY

HOR. SCALE: 1:250
VERTICAL: 1:10

RELEASED FOR CONSTRUCTION BY: [Signature]

DATE 2014/03/25 DATE 2014/03/15

ENGINEER'S SEAL

PROVINCE OF MANITOBA

REGISTERED PROFESSIONAL ENGINEER

FINDLAY

Member 23820

2015/07/30

CONSULTANT DRAWING NO. CT-03

METRIC

WHOLE NUMBERS INDICATE MILLIMETRES
DECIMALIZED NUMBERS INDICATE METRES

THE CITY OF WINNIPEG

Winnipeg PUBLIC WORKS DEPARTMENT
ENGINEERING DIVISION

PORTAGE AVENUE
MARYLAND STREET TO FURBY STREET
PAVEMENT REHABILITATION

EASTBOUND TRAFFIC LANES
PLAN AND PROFILE
STATION 2+920 TO FURBY STREET

CITY DRAWING NUMBER P-3469-03
SHEET 03 OF 10

AECOM

Certificate of Authorization

AECOM Canada Ltd.

Original dated on: 2013/07/30

No. 4671 Date: 2013/07/30