

ANSI B 279-4mm x 431.8mm

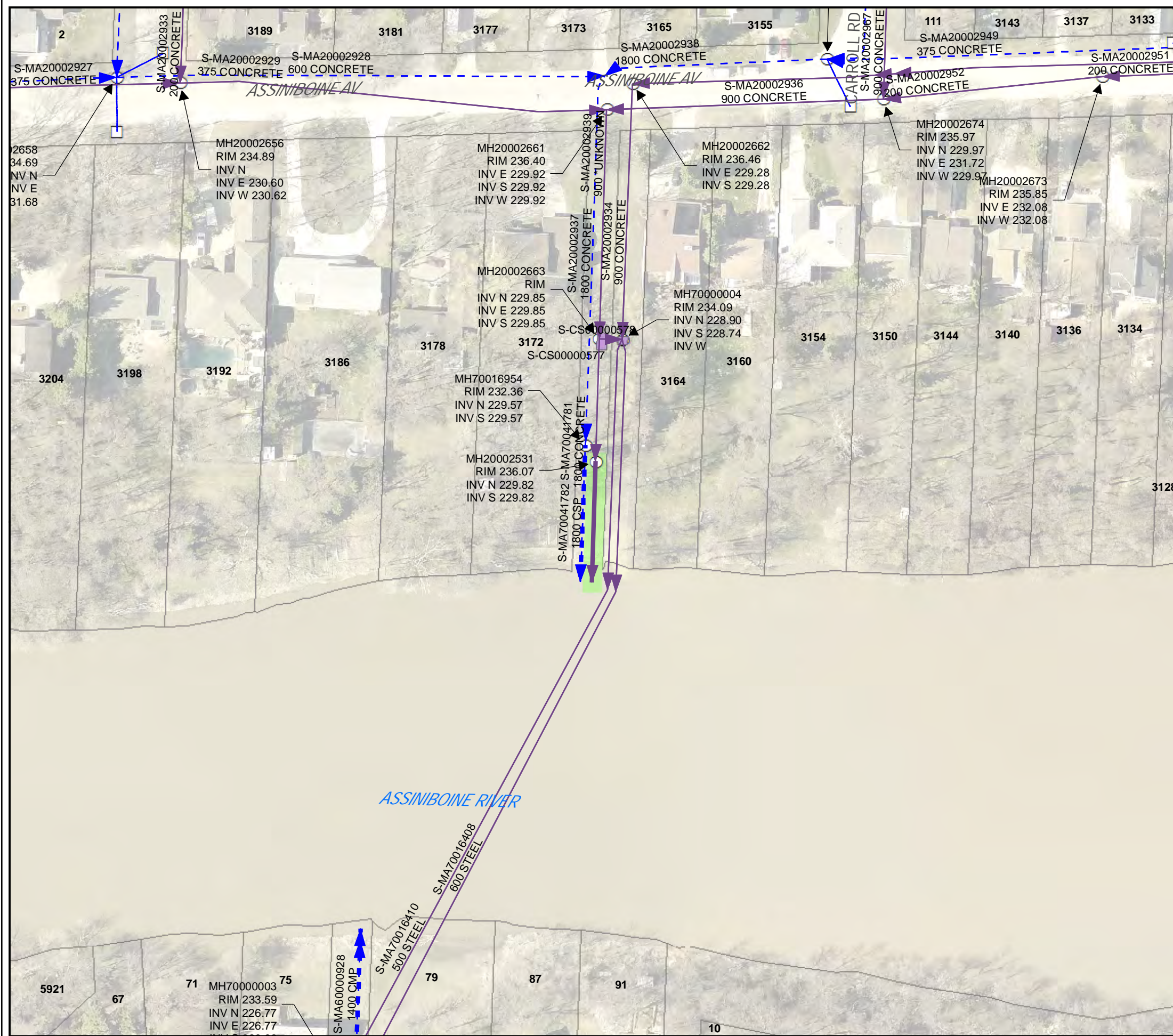
Approved:

Checked:

Designer:







Project Management Initials:

Last saved by: CLOUSTONC (2015-09-24) Last Plotted: newer  
Filename: P:\6043127\900-WORK\920-929 (GIS-GRAPHICS)\692-2015\_DRAWING\_XXX\_RO.MXD

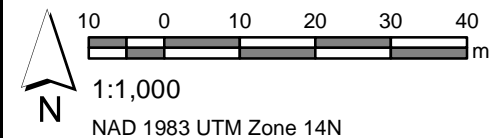


### Winter Inspections

#### LEGEND

-  LDS
-  WWS
-  CB Lead
-  SEWER MANHOLE
-  CATCH BASIN
-  CONTROL STRUCTURE

SITE CONSIDERATIONS:



Issue Status: Tender



Outfall Asset Number: S-MA70041784 - 30.08m  
 Upstream Sewer Asset Number: None - 0m  
 Upstream Manhole Coordinates: 622489.2099E, 5524970.8911N  
 Location: 3172 ASSINIBOINE AVE

2015 Outfall Inspections  
 City of Winnipeg  
 BID Opportunity No. 692-2015

Drawing: 224 of 341