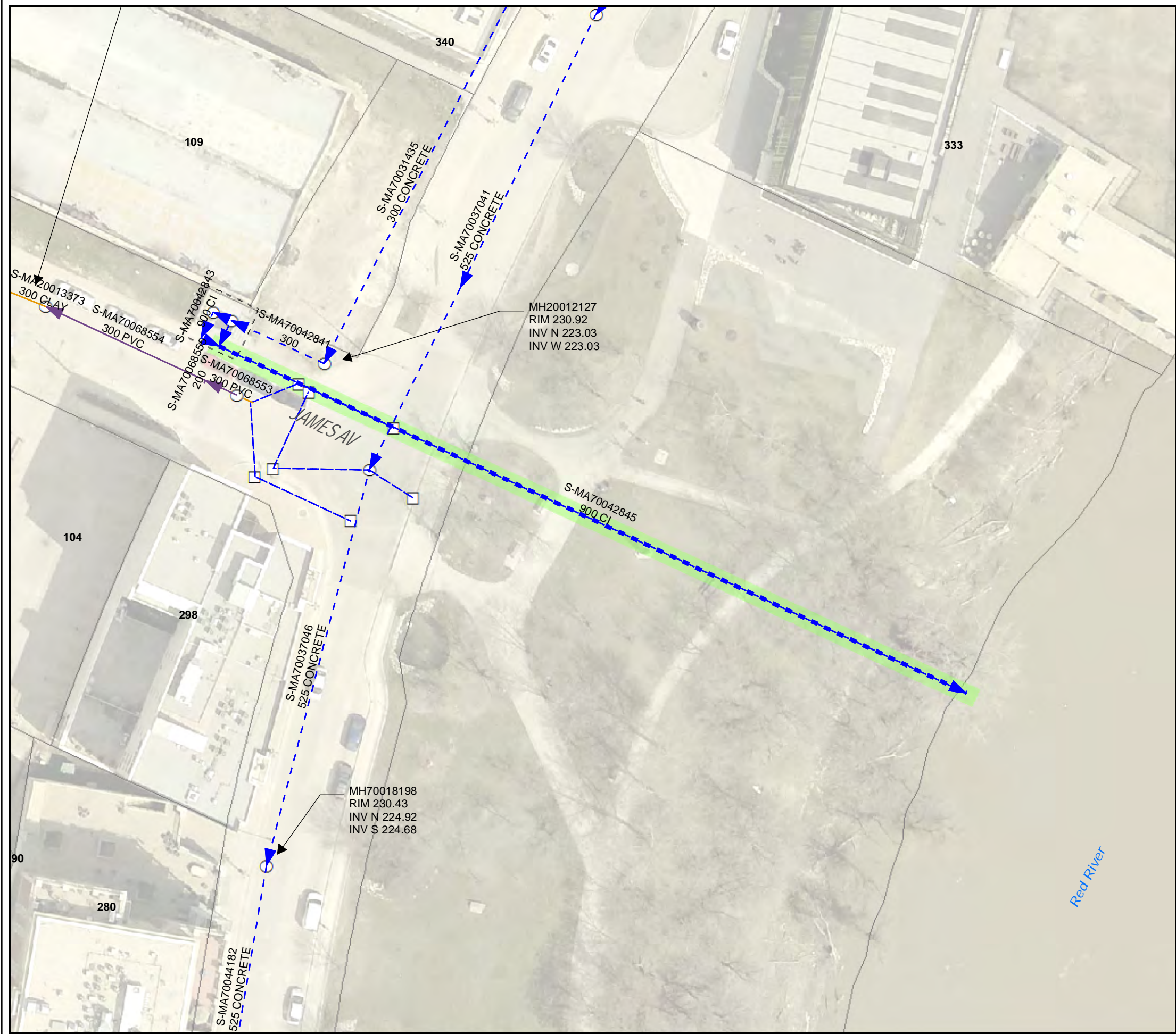


Last saved by: CLOUSTONC (2015-09-24) Last Plotted: newer
Filename: P:\6043127\900-WORK\920-929 (GIS-GRAPHICS)\692-2015_DRAWING_XXX_RO.MXD

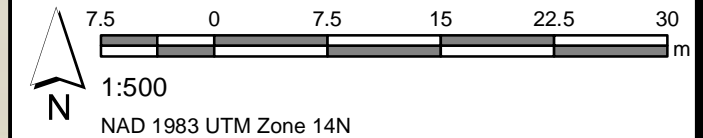


Sonar Required

LEGEND

- CS
- LDS
- WWS
- CB Lead
- SEWER MANHOLE
- CATCH BASIN
- SEWER CHAMBER

SITE CONSIDERATIONS:
ACCESS VIA LDS CHAMBER



Issue Status: Tender

2015 Outfall Inspections

City of Winnipeg
BID Opportunity No. 692-2015

Outfall Asset Number: S-MA70042845 - 102.44m

Upstream Sewer Asset Number: None - 0m

Upstream Manhole Coordinates: 634049.3343E, 5529035.9499N

Location: JAMES AVE



Drawing: 318 of 341