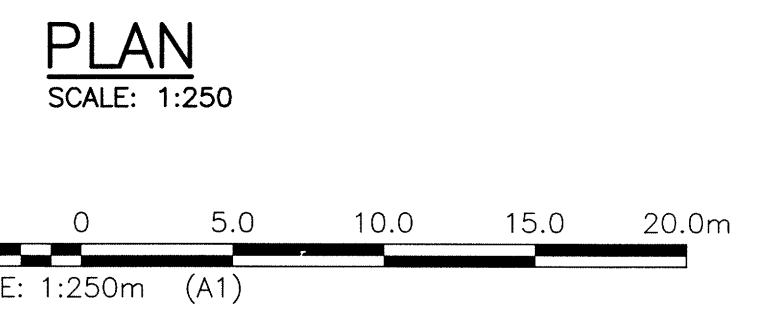
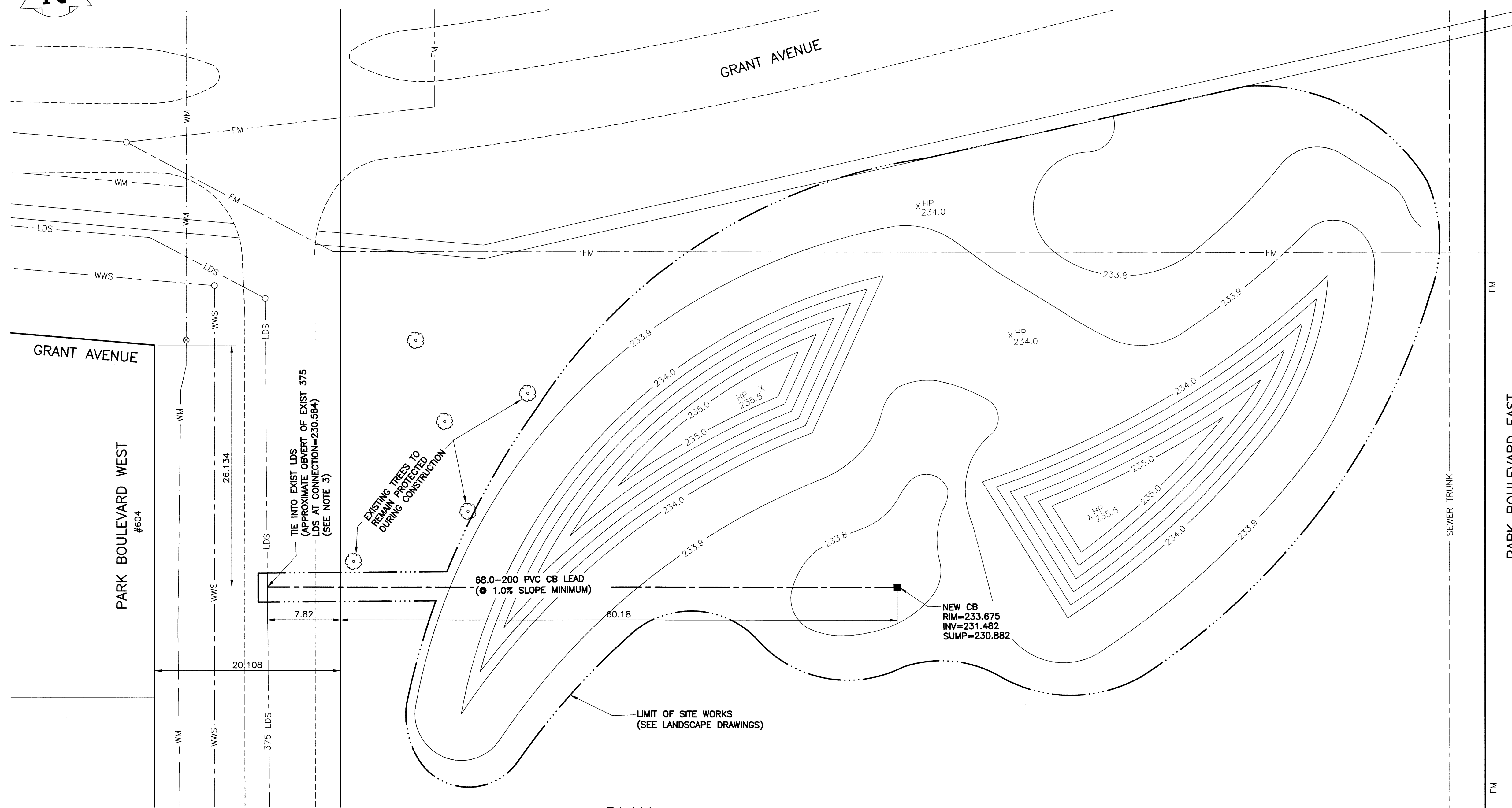
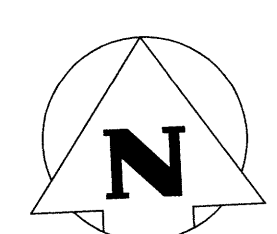
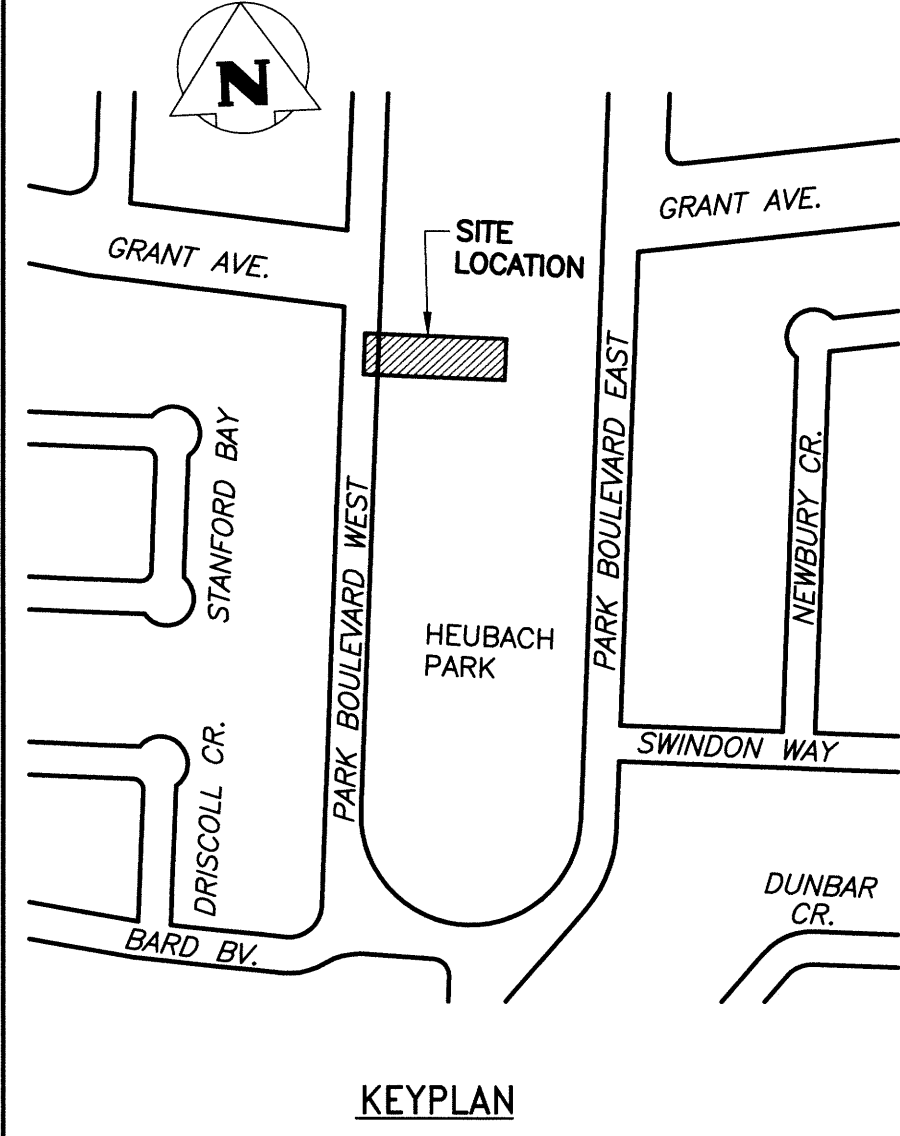


File Name: P:\Projects\2015\15-0109-001\Drawings\15-0109-001_CALL.dwg - Tab: C-01 Plotted By: ederoche 15/09/09 [Wed 4:27pm]
 24"x36" PLOT SCALE: 1:250



LEGEND:

DESCRIPTION	EXISTING	NEW
WASTE WATER SEWER	--- WWS ---	
LAND DRAINAGE SEWER	--- LDS ---	
FORCEMAIN	--- FM ---	
CATCHBASIN LEAD	--- CB LEAD ---	--- CB LEAD ---
WATERMAIN	--- WM ---	
SEWER MANHOLE	○	■
SEWER CATCHBASIN	□	■
WATERMAIN VALVE	⊗	
FIRE HYDRANT	⊕	
ELEVATION HIGH POINT		X _{HP} 234.0



PROPERTY LIMITS DELINEATION

DELINEATION OF PROPERTY LIMITS AS SHOWN ON THIS DWG DOES NOT REPRESENT A "LEGAL SURVEY". KGS GROUP MAKES NO REPRESENTATION OR WARRANTY AS TO THE ACCURACY OF PROPERTY LIMITS DELINEATED ON THIS DWG, NOR ON THE DIMENSIONAL ACCURACY OF DWG FEATURES RELATIVE TO THOSE PROPERTY LIMITS.

NOTE:
LOCATION OF UNDERGROUND STRUCTURES AS SHOWN ARE BASED ON THE BEST INFORMATION AVAILABLE, BUT NO GUARANTEE IS GIVEN THAT ALL EXISTING UTILITIES ARE SHOWN OR THAT THE GIVEN LOCATIONS ARE EXACT. CONFIRMATION OF EXISTENCE AND EXACT LOCATION OF ALL SERVICES MUST BE OBTAINED FROM THE INDIVIDUAL UTILITIES BEFORE PROCEEDING WITH CONSTRUCTION.

WARNING

- NOTIFY THE GAS COMPANY OF THE PROPOSED LOCATION OF EXCAVATION.
- TAKE PRECAUTION TO AVOID DAMAGE TO GAS COMPANY INSTALLATIONS.
- SEE PROVINCIAL REGULATION 210/72 FOR DETAILS.

METRIC

WHOLE NUMBERS INDICATE MILLIMETRES
DECIMALIZED NUMBERS INDICATE METRES

NOTES:

- ALL WORK SHALL BE PERFORMED IN ACCORDANCE WITH THE LATEST REVISION OF THE CITY OF WINNIPEG STANDARD CONSTRUCTION SPECIFICATIONS.
- DESIGN CONTOURS WITHIN SITE LIMITS PROVIDED FOR CONTEXT ONLY. REFER TO LANDSCAPE DRAWINGS FOR CONSTRUCTION OF SURFACE FEATURES
- CONTRACTOR SHALL BE RESPONSIBLE FOR OBTAINING ANY REQUIRED CUT PERMITS WITHIN CITY OF WINNIPEG RIGHT OF WAYS FOR CONNECTION OF CB LEAD TO LDS AND PERFORM REQUIRED RESTORATIONS.

0	15/09/08	ISSUED FOR CONSTRUCTION	
NO.	YY/MM/DD	DESCRIPTION	BY
REVISIONS / ISSUE			

CLIENT:

SCATLIF + MILLER + MURRAY INC.
TEL 204 877 3444 FAX 204 877 3443 1100-551 PORTAGE AVE WINNIPEG, MB, CANADA

PROJECT:
HEUBACH PARK DRAINAGE IMPROVEMENTS PROJECT

DWG. DESCRIPTION:
NEW CATCHBASIN LAYOUT

KGS GROUP CONSULTING ENGINEERS	DESIGN BY:	BJM	DATE (YY/MM/DD):	15/09/04	
	DESIGN CHECK:	CR	DATE:	15/09/09	
	DRAWN BY:	DMW	DATE:	15/09/04	
	DWG CHECK:	GEC	DATE:	15/09/09	
DWG. NO.:		15-0109-001 C01		REV:	0

